

IMPORTANT:
This document should not be relied upon or used in circumstances other than those for which it was originally prepared and for which McEachern Architects were commissioned.

McEachern Architects accepts no responsibility for this document to any party other than the person(s) by whom it was commissioned. Do not scale from this drawing - if in doubt ASK! All dimensions must be checked on site prior to works commencing.

REVISION DATE
D Scale bars added Nov 21

Construction Specification - General Notes

All dimensions must be verified on site by the contractors concerned prior to work commencing and any discrepancies reported to the Architect immediately. Figured dimensions only to be adhered to; do not scale from this drawing - if in doubt, ask!

All works to be carried out in accordance with the current building regulations and the relevant British Standards and Code of Practice, including but not limited to BS 8000.

All mechanical and electrical works to be installed by certified electrician
All materials and fittings to be supplied and fixed strictly in accordance with the manufacturers printed instructions, specifications and details.

Occupant capacity:
Cubicles 10
Staff 2
total 12

-All new plasterboard to be british gypsum wallboard with ames taped finish unless otherwise stated.
-The material of the wall or ceiling when tested to BS 476: Part 7: 1987 (1993), to attain a class 1 surface spread of flame.
The material has achieved a classification of D-S3, D2 or better when tested in accordance with BS EN: 13823 and BS EN ISO: 11925-2

New suspended ceiling to be Armstrong Tatra board 600x600 grid Euroclass A2-s1, d0

Cubicle Specification

Partitions -
Core : 18mm Acrylic board
Face : Black Gloss
Reverse : Black Matt
Edge : 2mm Black Gloss ABS
H Joint : Black Gloss PPC Aluminium

Doors & Fascia -
Core : 18mm Acrylic Board
Face : Black Gloss
Inner : Black Matt
Edge : 2mm Black Gloss ABS

Decor Panels
Core : 6mm STD MDF
Face Outer : Light Blue Mirror 10mm x 10mm Grid
Inner : Formica Black Matt HPL
Edge : Polished Aluminium Quadrant End Cap.

Light Pelmet
Core : 18mm Acrylic Board
Face : Black Gloss
Base : Black Matt
Boxed End : Black Gloss
Edge : 2mm Black Gloss ABS

Ironmongery
Leg - Polished 100mm High with anti-tamper fixings
Latch - Polished, emergency release, anti-tamper fixings
Hinges - Polished Rise & Fall
Brackets - Black Gloss PPC full height aluminium chamels with anti-tamper fixings.
Headrail - Black Gloss PPC 3mm Aluminium Angle.
Privacy Angle - Black Gloss PPC 3mm Aluminium Angle.

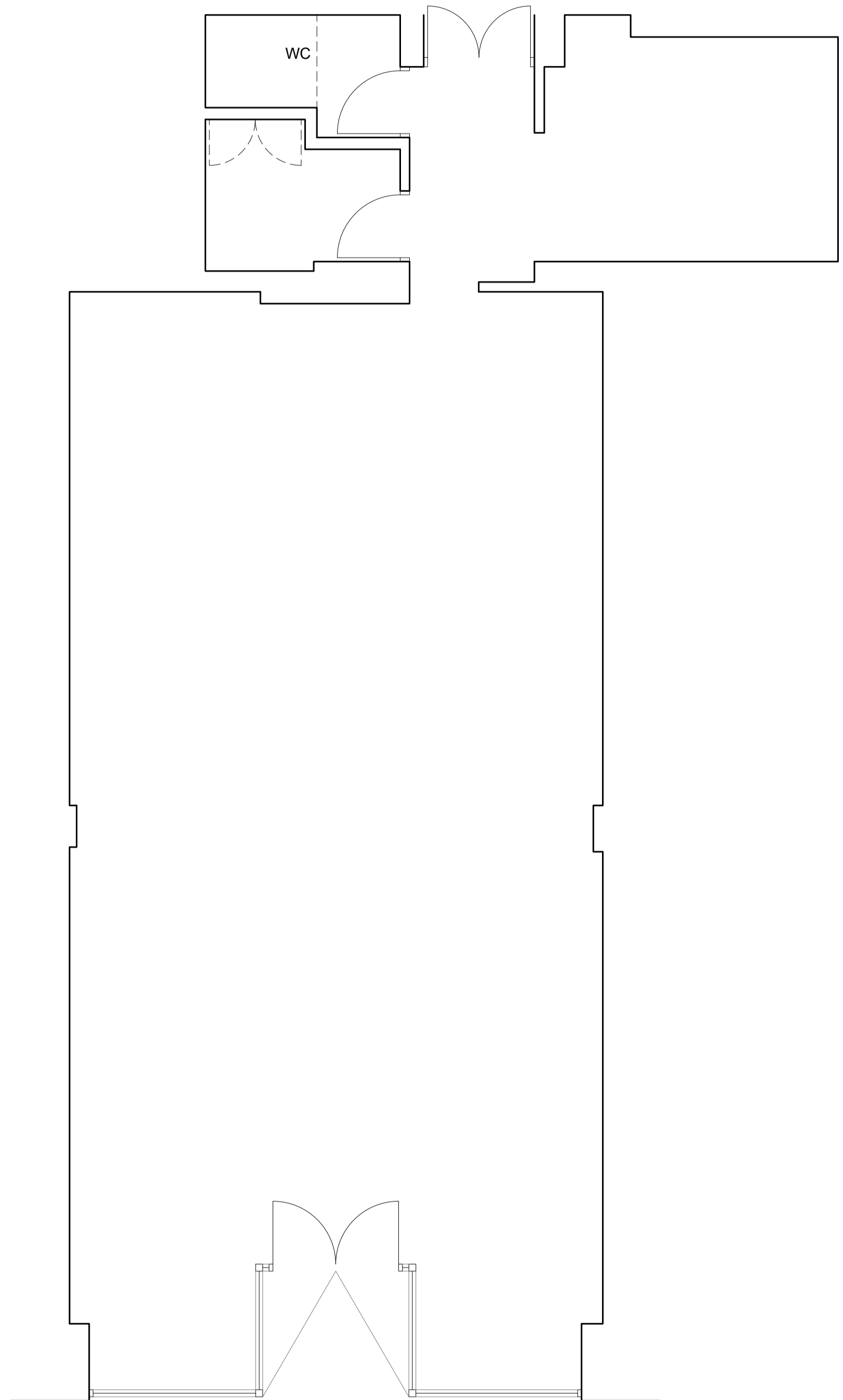
doors to be lockable without a key, operable from the side approached by occupants making escape ie hand latched on the inside of the cubicle.

Electrical work
All electrical fittings and wiring to be installed in accordance with the latest edition of the I.E.E regulations and BS 7671:2018 - select, NICEIC or similar cert required. 138KVA supply required.

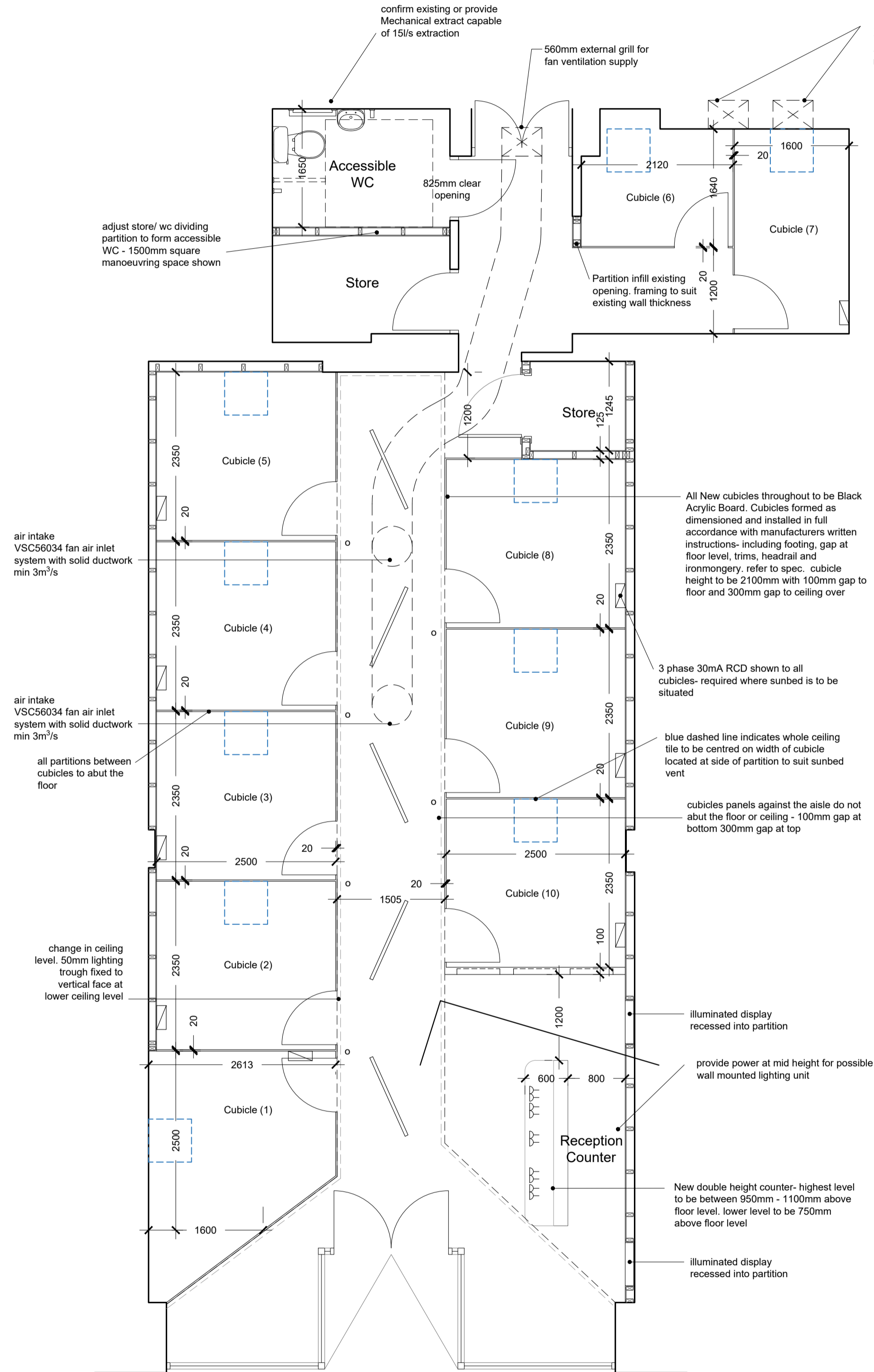
Positioning of electrical fixtures
All outlets and controls of electrical fixtures should be positioned 350mm min from any internal corner, projecting wall or similar obstruction and not more than 1200mm above finished floor level.
Light switches to be positioned between 900mm and 1100mm above finished floor level.
Standard switched and unswitched socket outlets and other service outlets to be positioned 400mm min above finished floor level and 150mm min above any projecting surface including worktops and fixtures.

Lighting
To be minimum 55 lamp lumens per circuit watt operated by manual switch. DLHIEL 310 small LED to cubicles. Halers H6 Large LED elsewhere - lighting fixtures positioned to suit grid layout, aligned with rear of cubicle panels

Emergency lighting and escape route lighting to be to BS 5266-1:2016 on independent fire protected circuit.



Plan as existing 1:50@A1



Plan as proposed 1:50@A1

2no. 560mm dia. Mechanical warm air extract system above susp ceiling. min 5m²/s

confirm existing or provide Mechanical extract capable of 15l/s extraction

560mm external grill for fan ventilation supply

adjust store/wc dividing partition to form accessible WC - 1500mm square manoeuvring space shown

Partition infill existing opening, framing to suit existing wall thickness

air intake VSC56034 fan air inlet system with solid ductwork min 3m²/s

air intake VSC56034 fan air inlet system with solid ductwork min 3m²/s

all partitions between cubicles to abut the floor

change in ceiling level. 50mm lighting trough fixed to vertical face at lower ceiling level

All New cubicles throughout to be Black Acrylic Board. Cubicles formed as dimensioned and installed in full accordance with manufacturers written instructions- including footling, gap at floor level, trims, headrail and ironmongery, refer to spec. cubicle height to be 2100mm with 100mm gap to floor and 300mm gap to ceiling over

3 phase 30mA RCD shown to all cubicles- required where sunbed is to be situated

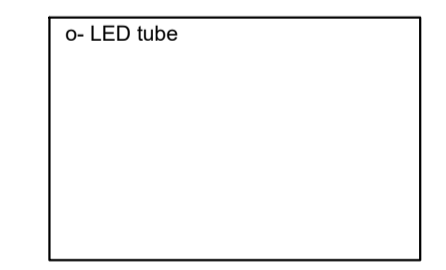
blue dashed line indicates whole ceiling tile to be centred on width of cubicle located at side of partition to suit sunbed vent

cubicles panels against the aisle do not abut the floor or ceiling - 100mm gap at bottom 300mm gap at top

illuminated display recessed into partition
provide power at mid height for possible wall mounted lighting unit

New double height counter- highest level to be between 950mm - 1100mm above floor level. lower level to be 750mm above floor level

illuminated display recessed into partition



suspended ceiling height to be confirmed
suspended ceiling height to be confirmed

3 phase 30mA RCD required where sunbeds are located

Electrical Layout indicative only

Ventilation to comply with CIBSE guidance

Mirror to be provided in a location selected by the client

doors to cubicles to be 750mm opening width
doors to rooms to be 825mm clear width
entrances/ exits to be 800mm clear width

APPROVAL



13 Allan Park
Stirling
FK8 2QG
Tel: 01786 464 111
Mob: 07710 586 757
E-mail: admin@mceachernarchitects.com
Web: www.mceachernarchitects.com

CLIENT
Indigo Sun Retail Ltd

PROJECT TITLE
40 Wigmore North
Welwyn Garden City

DRAWING TITLE
Drawings Existing and Proposed

SCALE
1:50@A1
DRAWN BY
PBM

DATE
Oct 21
CHECKED BY

JOB NO	DRAWING NO	REVISION
2152	PR(2)-01	D