

IMPORTANT:  
This document should not be relied upon or used in circumstances other than those for which it was originally prepared and for which McEachern Architects were commissioned.

McEachern Architects accepts no responsibility for this document to any party other than the person(s) by whom it was commissioned. Do not scale from this drawing - if in doubt ASK! All dimensions must be checked on site prior to works commencing.

REVISION DATE

**Construction Specification - General Notes**

All dimensions must be verified on site by the contractors concerned prior to work commencing and any discrepancies reported to the Architect immediately. Figured dimensions only to be adhered to; do not scale from this drawing - if in doubt, ask!

All works to be carried out in accordance with the current building regulations and the relevant British Standards and Code of Practice, including but not limited to BS 8000.

All mechanical and electrical works to be installed by certified electrician. All materials and fittings to be supplied and fixed strictly in accordance with the manufacturers printed instructions, specifications and details.

Occupant capacity:  
Cubicles 10  
Staff 2  
total 12

-All new plasterboard to be british gypsum wallboard with ames taped finish unless otherwise stated.  
-The material of the wall or ceiling when tested to BS 476: Part 7: 1987 (1993), to attain a class 1 surface spread of flame.  
The material has achieved a classification of D-S3, D2 or better when tested in accordance with BS EN: 13823 and BS EN ISO: 11925-2

New suspended ceiling to be Armstrong Tatra board 600x600 grid Euroclass A2-s1, d0

**Cubicle Specification**

**Partitions** -  
Core :18mm Acrylic board  
Face : Black Gloss  
Reverse : Black Matt  
Edge : 2mm Black Gloss ABS  
H Joint: Black Gloss PPC Aluminium

**Doors & Fascia** -  
Core :18mm Acrylic Board  
Face : Black Gloss  
Inner : Black Matt  
Edge : 2mm Black Gloss ABS

**Decor Panels**  
Core :6mm STD MDF  
Face Outer : Light Blue Mirror 10mm x 10mm Grid  
Inner : Formica Black Matt HPL  
Edge : Polished Aluminium Quadrant End Cap.

**Light Pelmet**  
Core :18mm Acrylic Board  
Face : Black Gloss  
Base : Black Matt  
Boxed End : Black Gloss  
Edge : 2mm Black Gloss ABS

**Ironmongery**  
Leg - Polished 100mm High with anti-tamper fixings  
Latch - Polished, emergency release, anti-tamper fixings  
Hinges - Polished Rise & Fall  
Brackets - Black Gloss PPC full height aluminium chamels with anti-tamper fixings.  
Headrail - Black Gloss PPC 3mm Aluminium Angle.  
Privacy Angle - Black Gloss PPC 3mm Aluminium Angle.

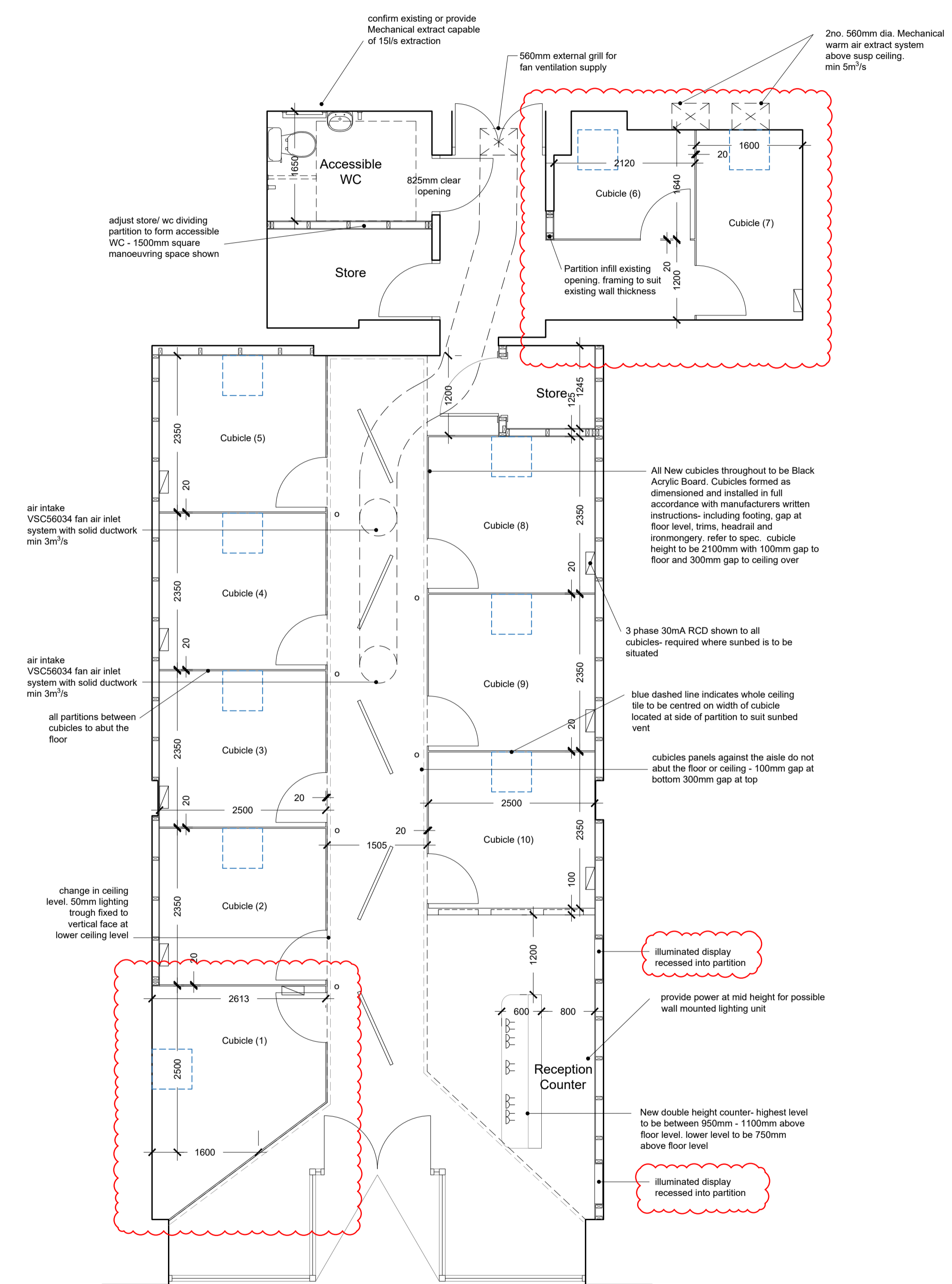
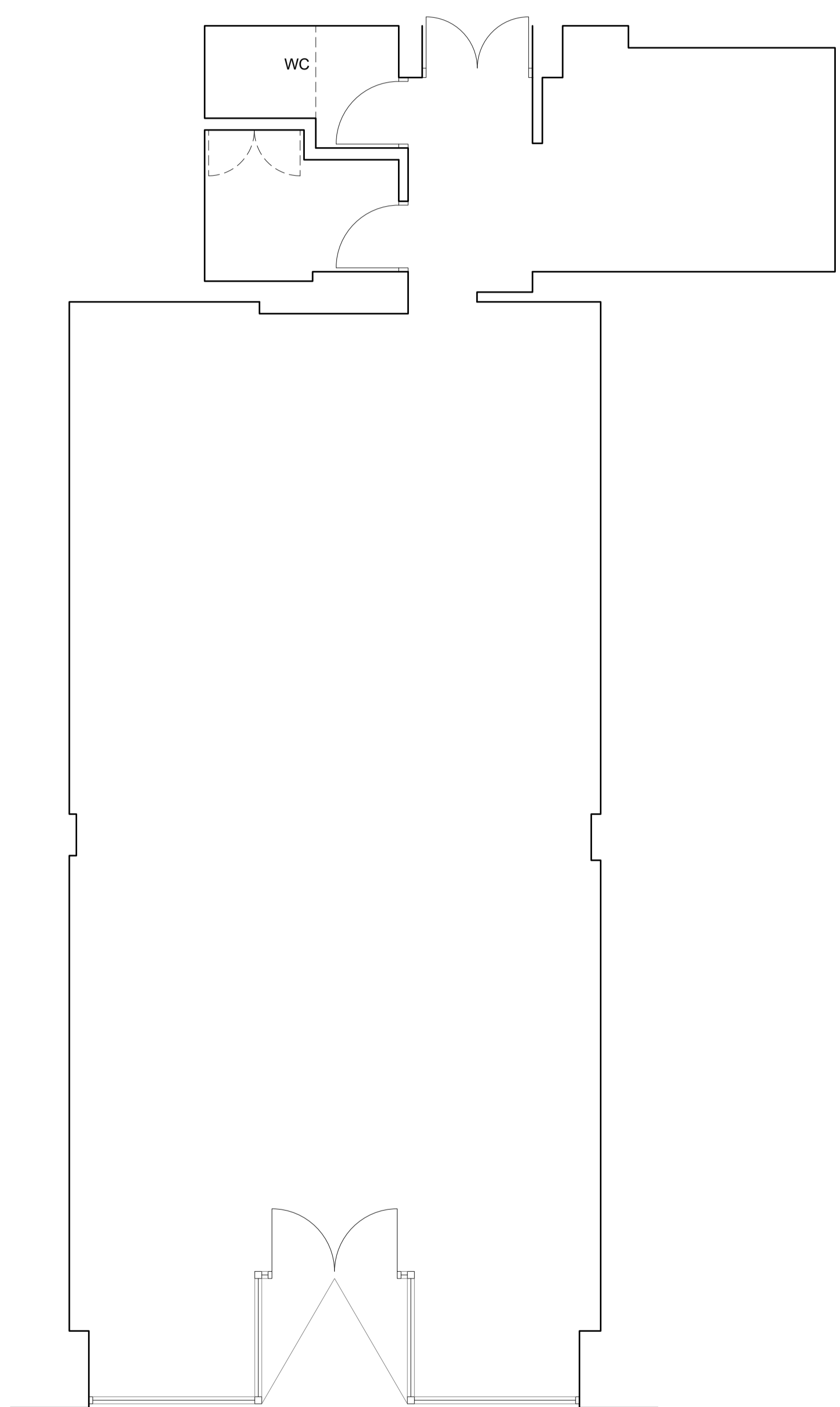
doors to be lockable without a key, operable from the side approached by occupants making escape ie hand latched on the inside of the cubicle.

**Electrical work**  
All electrical fittings and wiring to be installed in accordance with the latest edition of the I.E.E regulations and BS 7671:2018 - select, NICEIC or similar cert required. 138KVA supply required.

**Positioning of electrical fixtures**  
All outlets and controls of electrical fixtures should be positioned 350mm min from any internal corner, projecting wall or similar obstruction and not more than 1200mm above finished floor level.  
Light switches to be positioned between 900mm and 1100mm above finished floor level.  
Standard switched and unswitched socket outlets and other service outlets to be positioned 400mm min above finished floor level and 150mm min above any projecting surface including worktops and fixtures.

**Lighting**  
To be minimum 55 lamp lumens per circuit watt operated by manual switch. DLHIEL 310 small LED to cubicles. Halers H6 Large LED elsewhere - lighting fixtures positioned to suit grid layout, aligned with rear of cubicle panels

Emergency lighting and escape route lighting to be to BS 5266-1:2016 on independent fire protected circuit.



- o- LED tube
- suspended ceiling height to be confirmed
- suspended ceiling height to be confirmed
- 3 phase 30mA RCD required where sunbeds are located
- Electrical Layout indicative only
- Ventilation to comply with CIBSE guidance
- Mirror to be provided in a location selected by the client
- doors to cubicles to be 750mm opening width
- doors to rooms to be 825mm clear width
- entrances/ exits to be 800mm clear width

**APPROVAL**



13 Allan Park  
Stirling  
FK8 2QG  
Tel: 01786 464 111  
Mob: 07710 586 757  
E-mail: admin@mceachernarchitects.com  
Web: www.mceachernarchitects.com

CLIENT  
**Indigo Sun Retail Ltd**

PROJECT TITLE  
**40 Wigmore North  
Welwyn Garden City**

DRAWING TITLE  
**Drawings Existing and Proposed**

SCALE  
**1:50@A1**  
DRAWN BY  
**PBM**

DATE  
**Oct 21**  
CHECKED BY

JOB NO	DRAWING NO	REVISION
2152	PR(2)-01	C