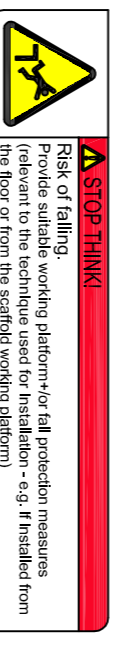


Note:
All drawings and schedules are subject to local authority approval, building regulations and other statutory approvals together with structural and civil engineers details, energy specialists' criteria, M & E and other key specialists' details. Any tolerances and differential movement between elements is to be accommodated within the design. Final design is to be phased and fully coordinated to ensure a robust solution to meet appropriate legislative and safety standards.

Note:
Final materials and fenestration are to be fully in accordance with local authority approved materials schedule.

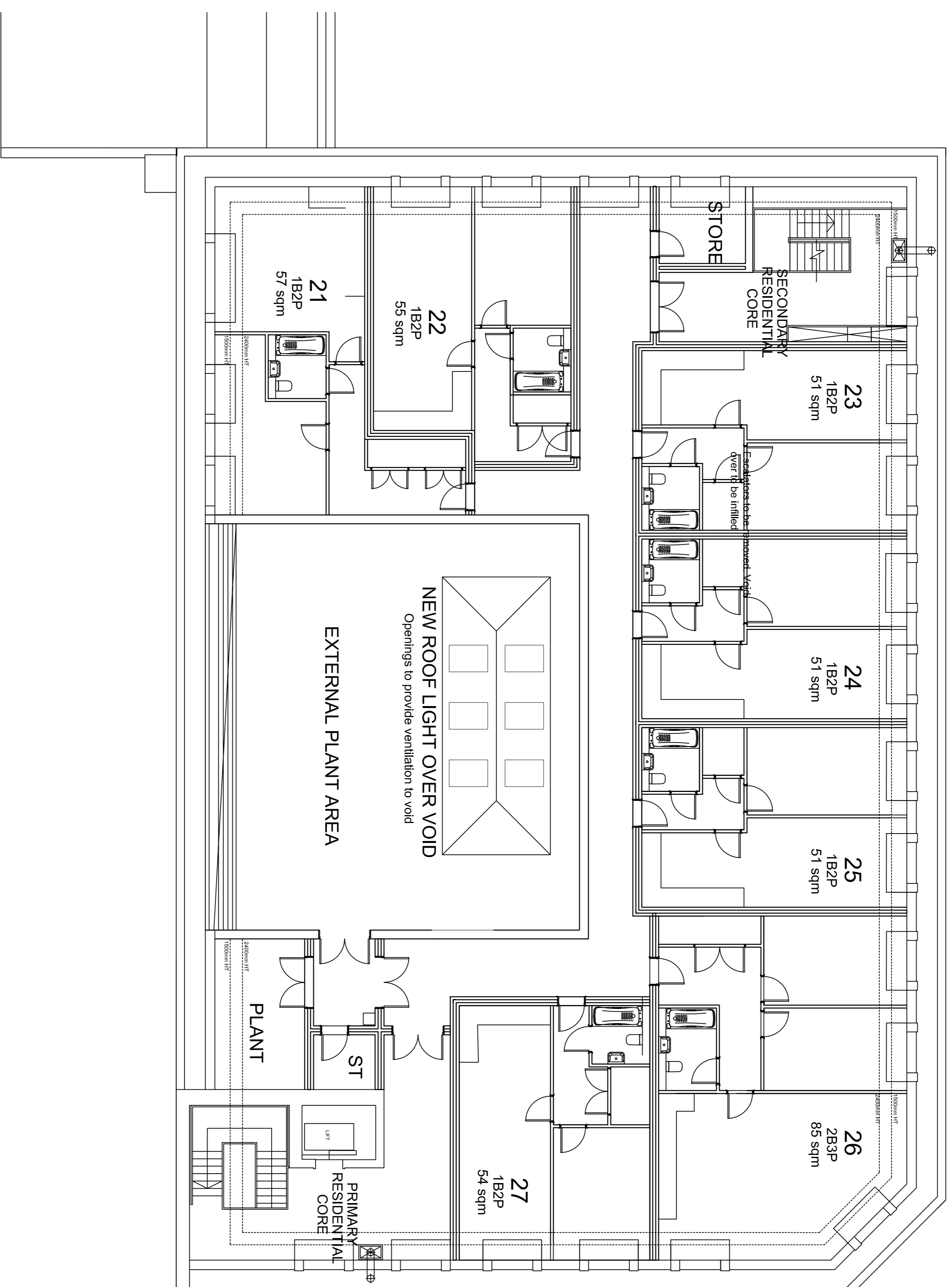


ASBESTOS RISK
Provide suitable working conditions for all asbestos removals (in floor or from the ceiling/wall/ceiling)



Warning symbol:
High voltage and the removal of metal leading to the contact of ground or the presence of movement + falling on the work area.

REVISIONS:



client:
Genesis

project:
Debenhams Store
Weyln Green City

description:
General Arrangement
Third Floor



architects ltd

head office:
the old stone masons, 10 st Johns St,
London EC4A 3DF
tel: 01873 651125 fax: 01873 651127

newport: 5, quail lane,
newport, south Wales, NP20 4DQ
tel: 01633 245020
e: mail: info@jdwarchitects.co.uk
w: www.jdwarchitects.co.uk

drawn: @A1
scale: 1:100
date: JUL 20
sheet: 01:
revision no: iw984-124