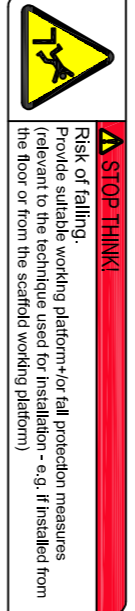
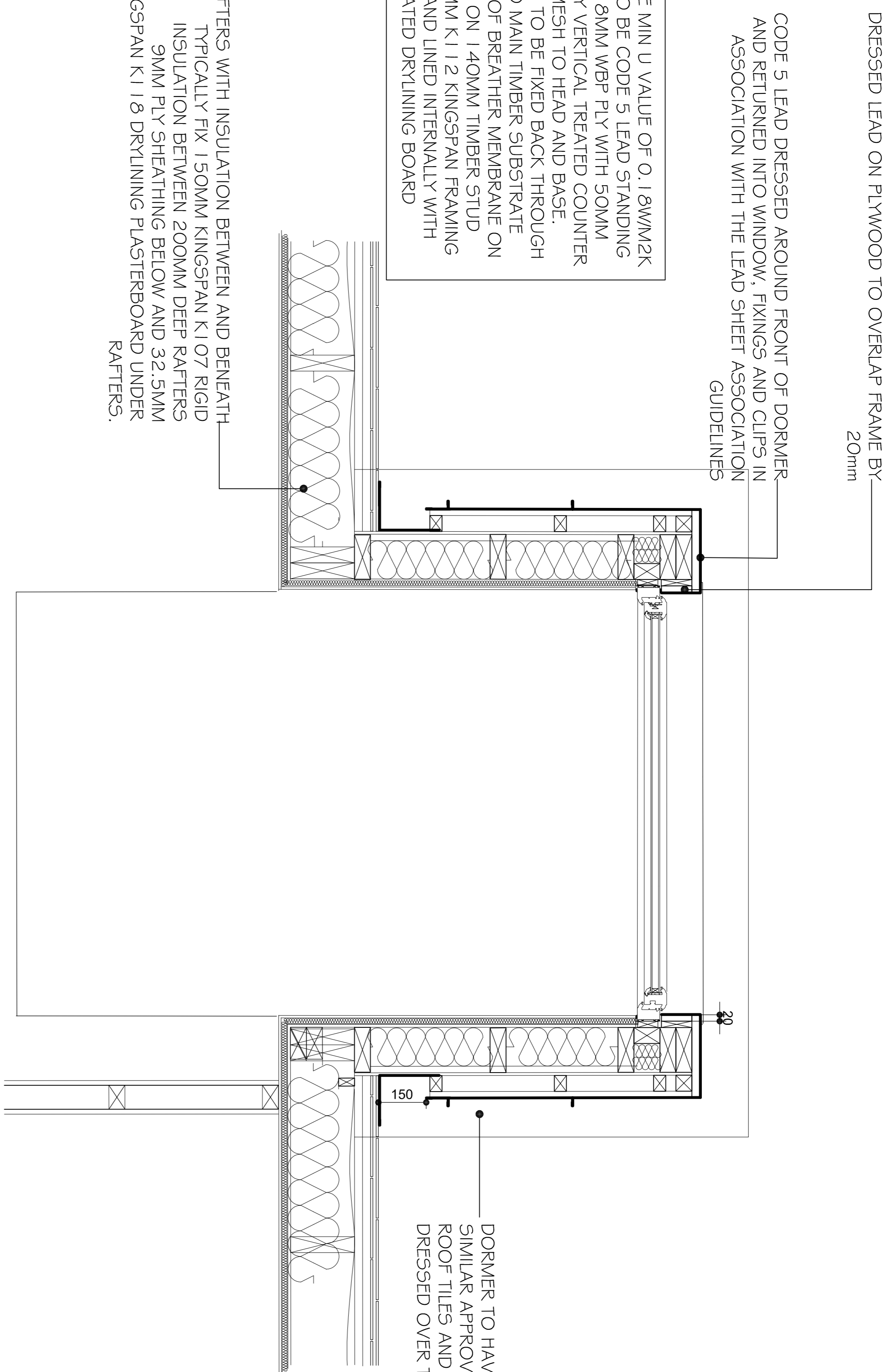


**Note:**  
 All drawings and schedules are  
 subject to local authority approval,  
 building regulations and other  
 statutory approvals together with  
 structural and civil engineers details,  
 energy specialists' criteria, M & E,  
 and other key specialists' details.  
 Any tolerances and differential  
 movement between elements is to  
 be accommodated within the design.  
 Final design is to be phased and  
 fully coordinated to ensure a robust  
 solution to meet appropriate  
 legislative and safety standards.

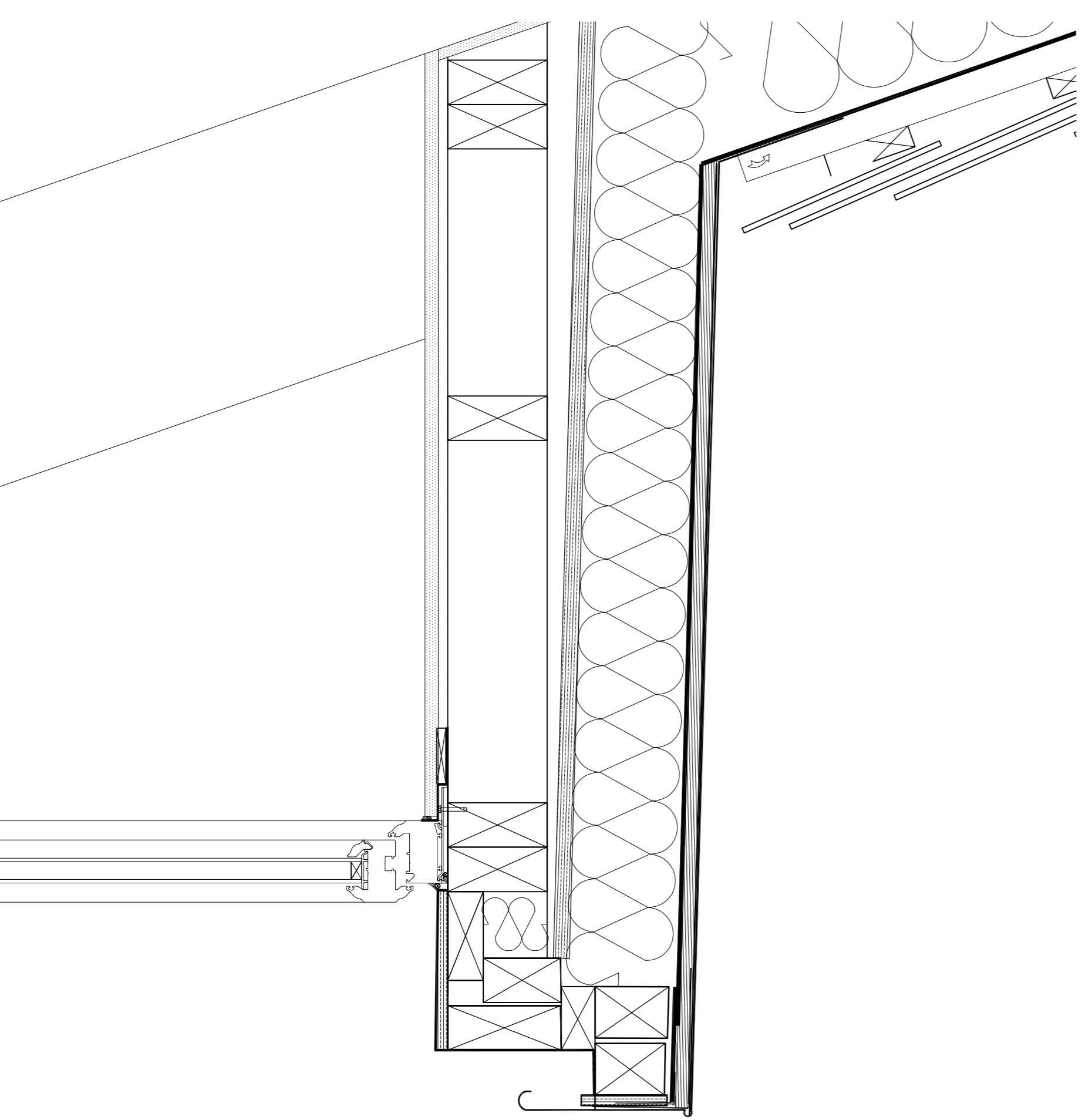
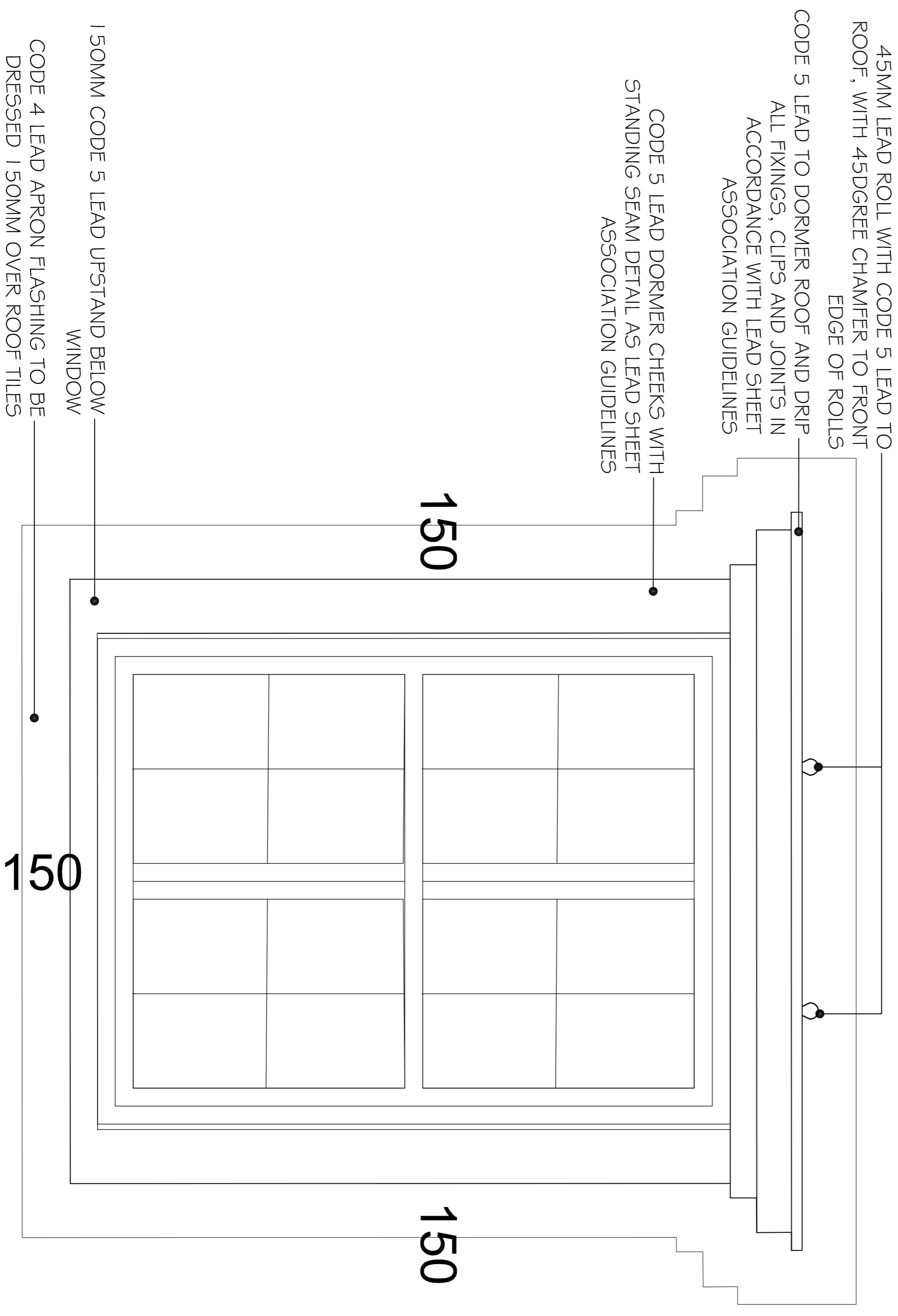
**Note:**  
 Final materials and fenestration are  
 to be fully in accordance with local  
 authority approved materials  
 schedule.



**REVISIONS:**



DORMER CHEEKS TO ACHIEVE MIN U VALUE OF 0.18W/M2K  
 - TYPICAL CONSTRUCTION TO BE CODE 5 LEAD STANDING  
 SEAM ON UNDERLAY ON 18MM WBP PLY WITH 50MM  
 VENTILATED VOID FORMED BY VERTICAL TREATED COUNTER  
 BATTENS WITH INSECT MESH TO HEAD AND BASE.  
 VENTILATED CONSTRUCTION TO BE FIXED BACK THROUGH  
 BREATHER MEMBRANE TO MAIN TIMBER SUBSTRATE  
 COMPRISING OF WATERPROOF BREATHER MEMBRANE ON  
 9MM SHEATHING BOARD ON 140MM TIMBER STUD  
 CONSTRUCTION WITH 120MM K112 KINGSPAN FRAMING  
 BOARD BETWEEN STUDS AND LINED INTERNALLY WITH  
 32.5MM K118 INSULATED DRYLINING BOARD



**Dormer Details - 1:10**

1:10  
 0m 1m 2m 5m 10m