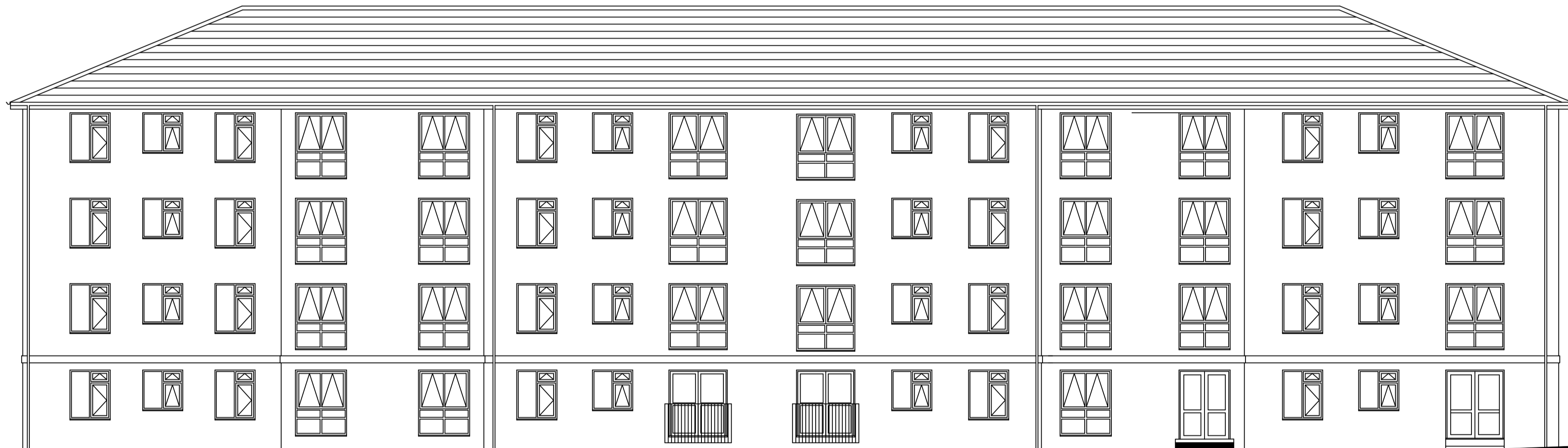


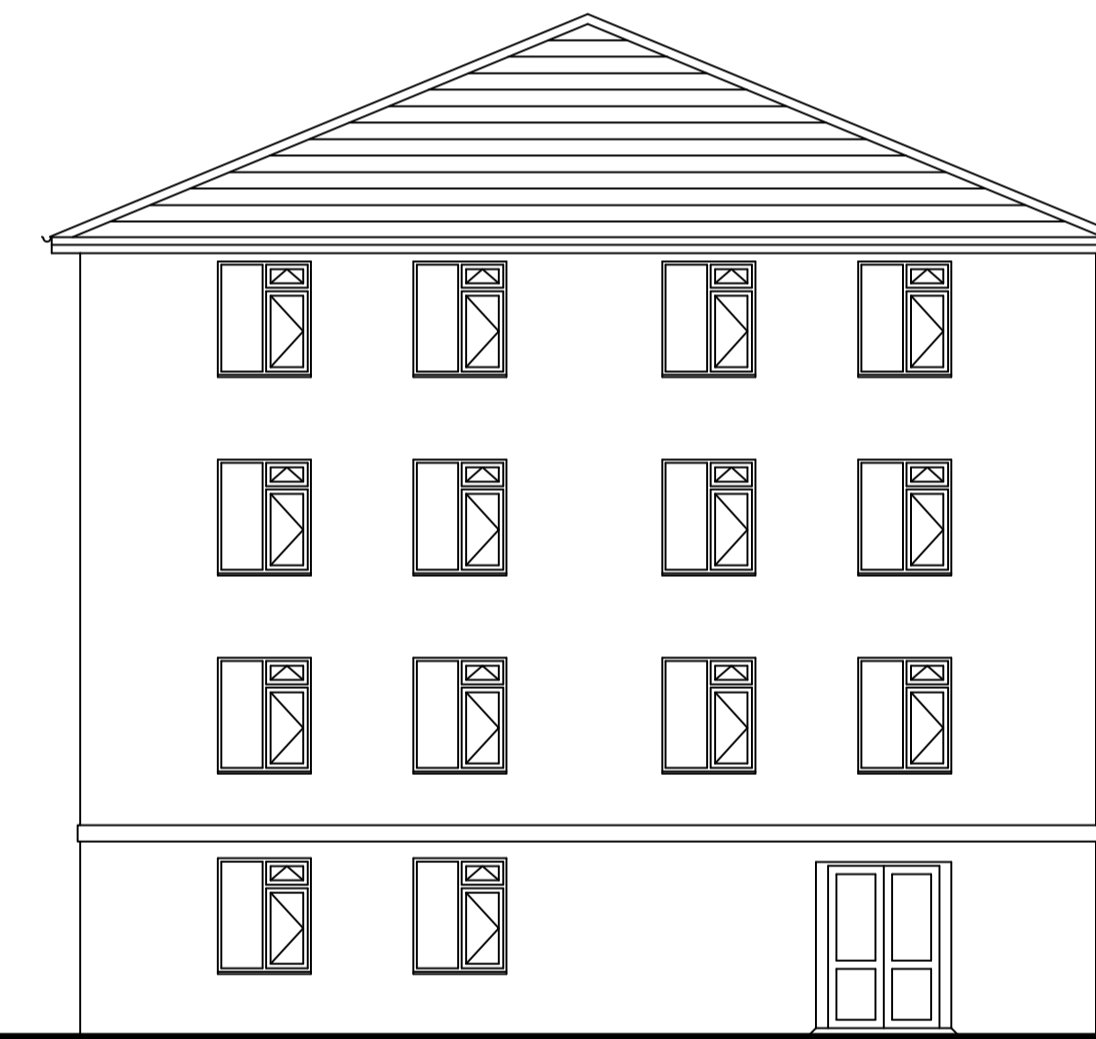
West Elevation



South Elevation



East Elevation



North Elevation

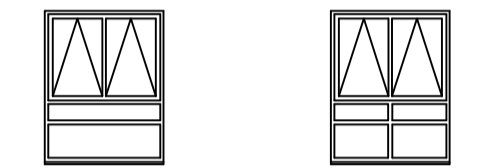
Twenty four windows, 9 in the West elevation 6 in the South elevation and 9 in the East elevation, will be replaced with a modified version of the window. Insertion of a cill-to-head mullion will prevent (current) transom deflection.

Existing Proposed Approximate w x h
1800mm x 2010mm

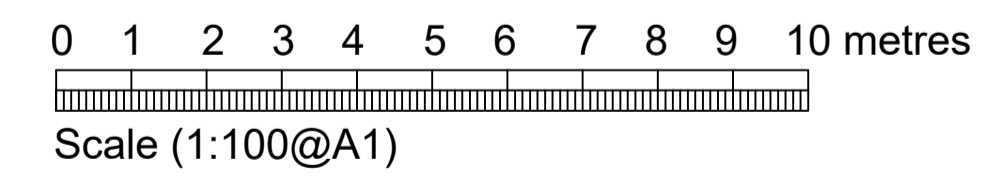


Twenty nine windows, 14 in the West elevation and 15 in the East elevation, will be replaced with a similarly modified version of the window. Insertion of a cill-to-head mullion will prevent (current) transom deflection.

Existing Proposed Approximate w x h
1580mm x 2010mm



The other 92 windows of Block 5 will have replacements identical to existing windows.



Revision	Description of Revision	By	Date

Drawing:	
Proposed Elevations of Block 5	
Project:	
Window Replacement at Woodside House, Welwyn Garden City	
For:	
First Garden Cities Homes	
CAM CONSTRUCTION ASSET MANAGEMENT	
Scale:	Date:
1:100@A1	7 September 2020
Drawn:	Drawing Number:
BG	1351/7