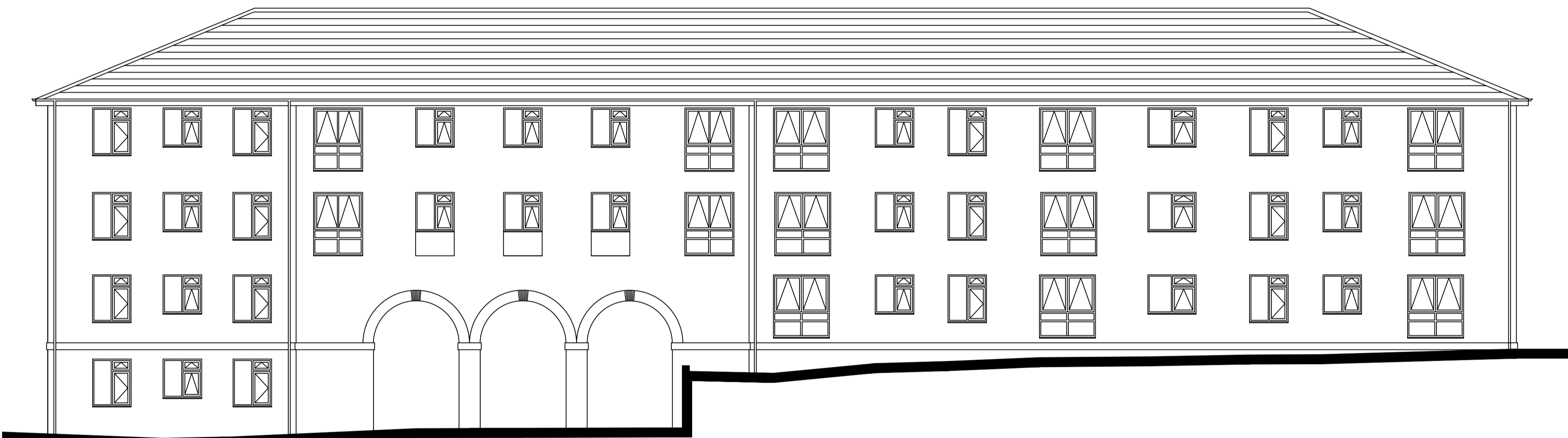


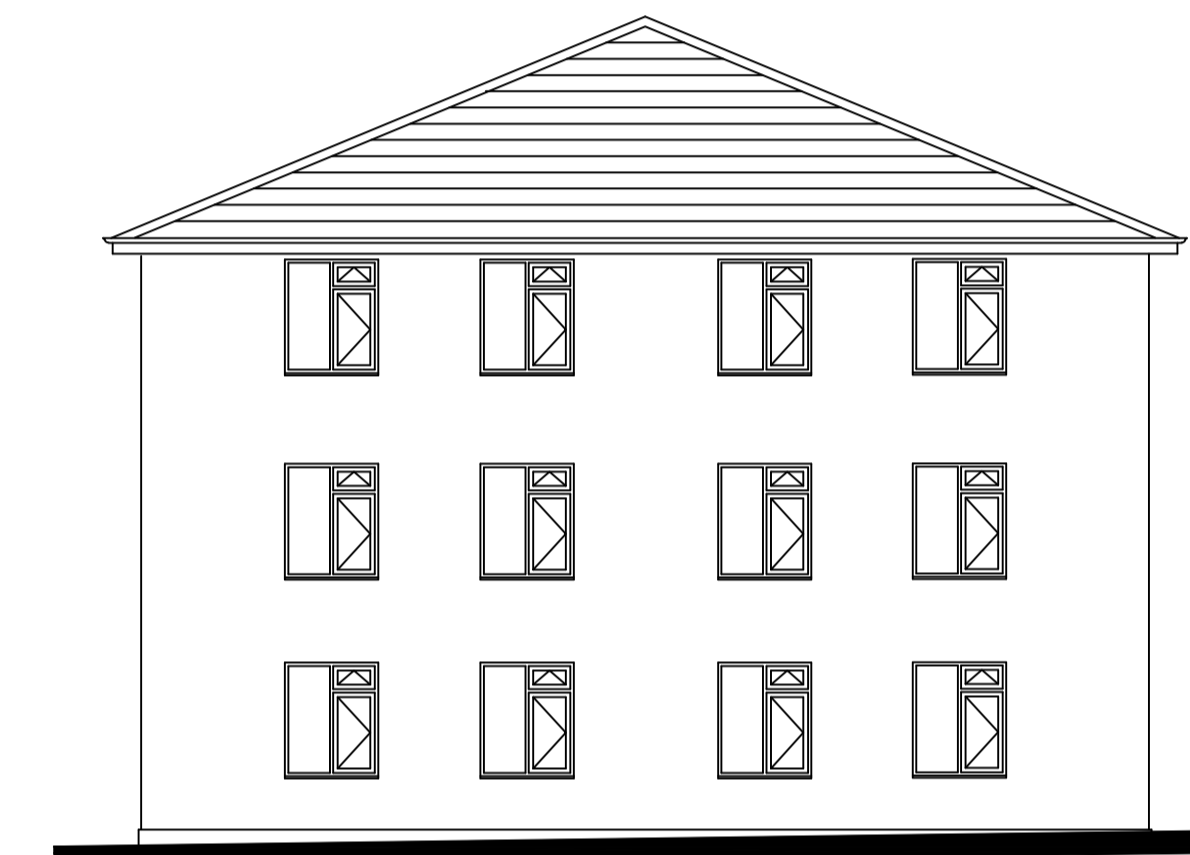
West Elevation of Block 3



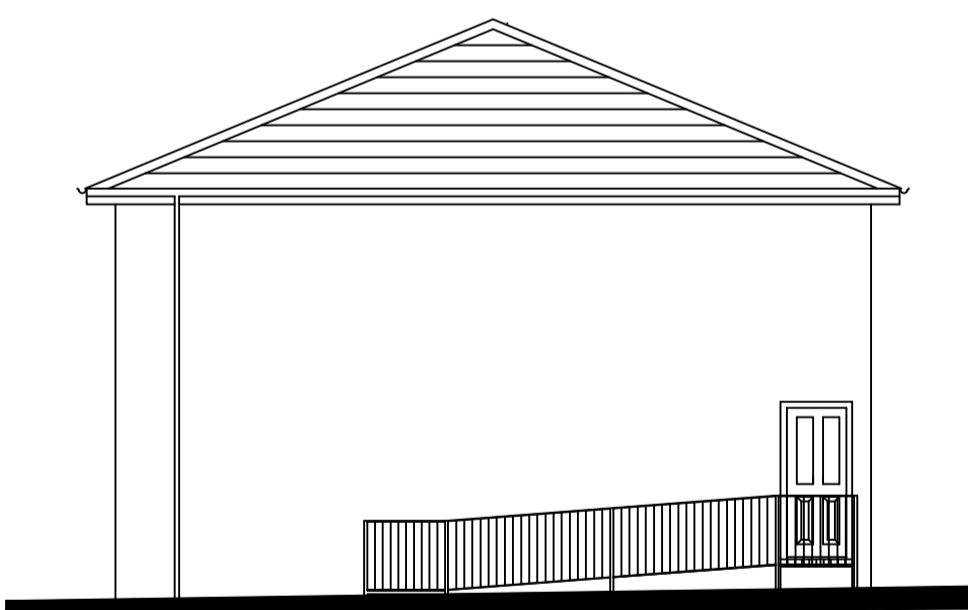
South Elevation of Block 3



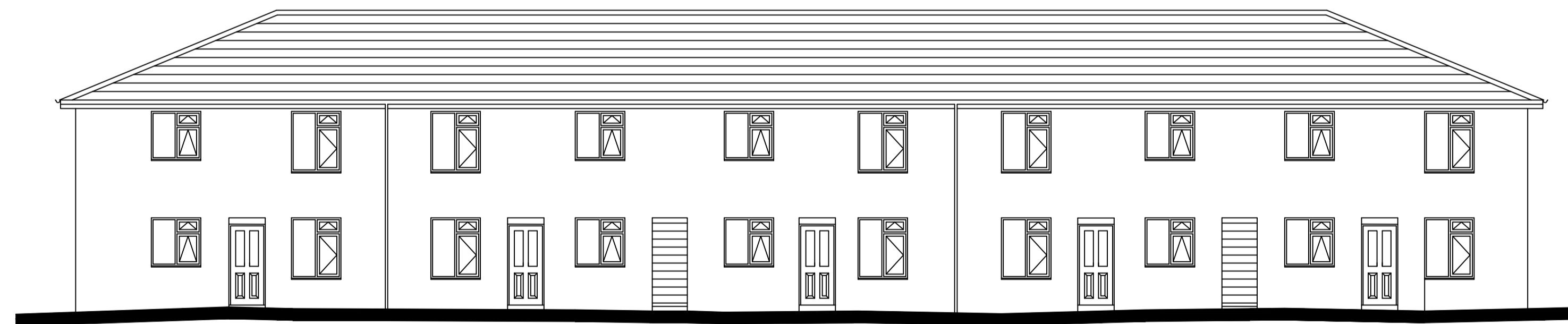
East Elevation of Block 3



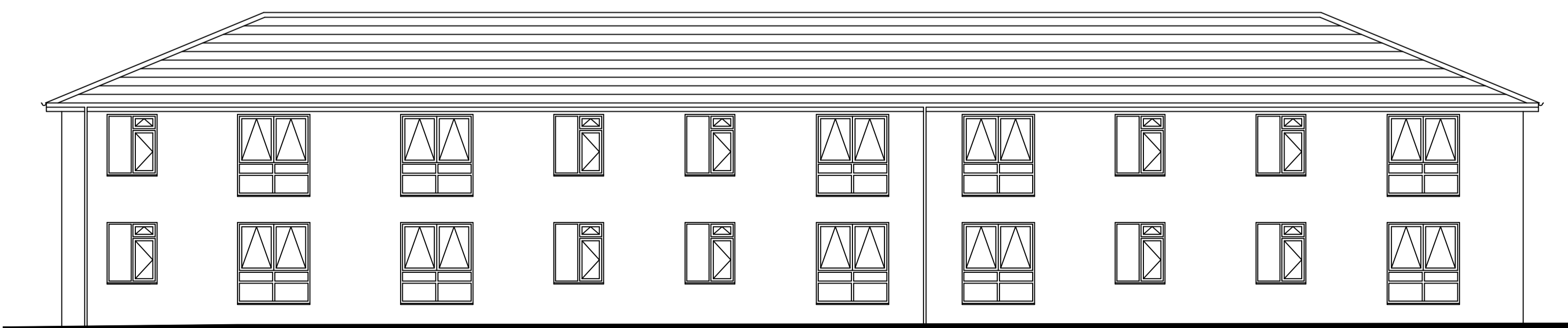
North Elevation of Block 3



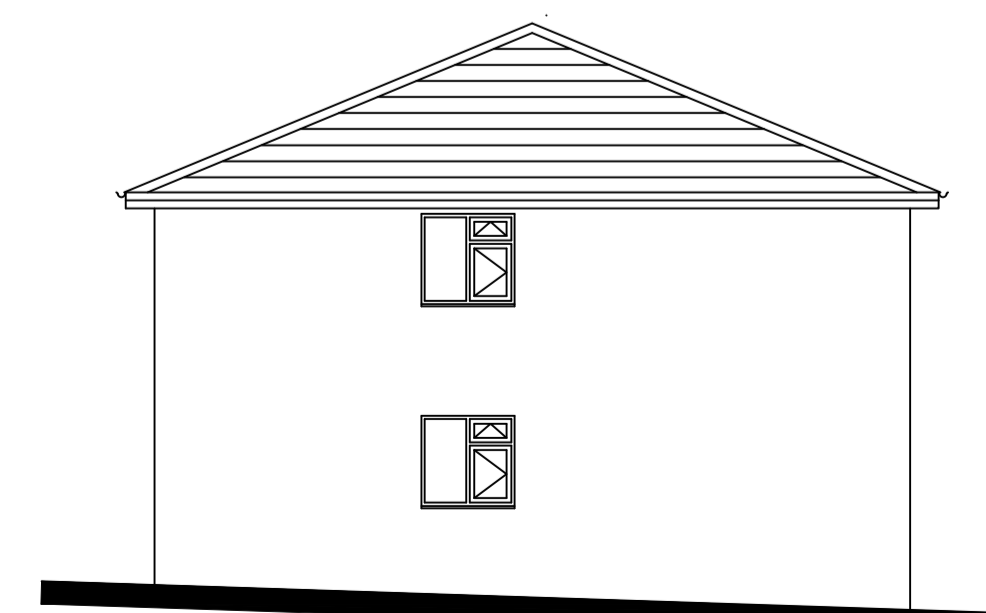
East Elevation of Block 4



North Elevation of Block 4

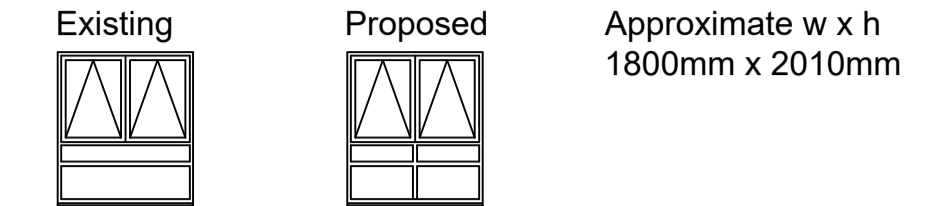


South Elevation of Block 4

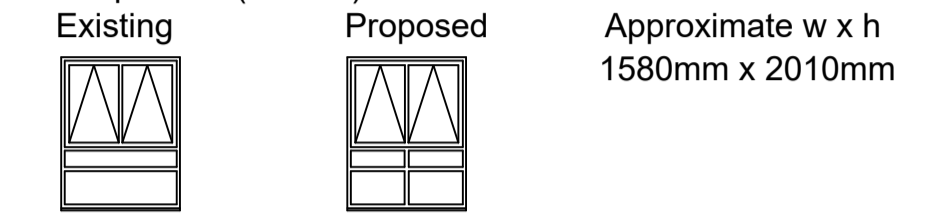


West Elevation of Block 4

**Block 3**  
Twenty six windows, 11 in the West elevation, 6 in the South elevation and 9 in the East elevation, will be replaced with a modified version of the window. Insertion of a cill-to-head mullion will prevent (current) transom deflection.

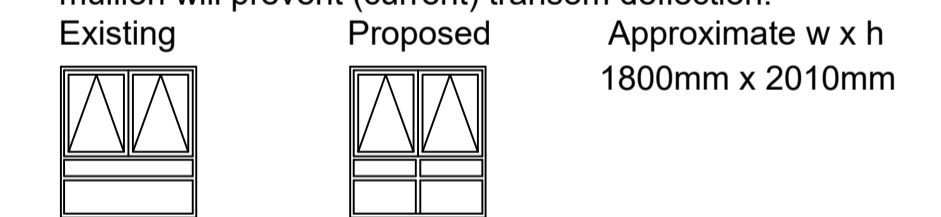


Eight windows, 4 in the West elevation and 4 in the East elevation, will be replaced with a similarly modified version of the window. Insertion of a cill-to-head mullion will prevent (current) transom deflection.



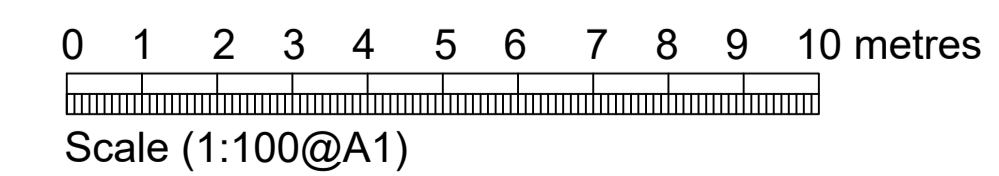
The other 83 windows of Block 3 will have replacements identical to existing windows.

**Block 4**  
Ten windows in the South elevation - similar to 26 windows in Block 3, above - will be replaced with a modified version. Again, insertion of a cill-to-head mullion will prevent (current) transom deflection.



The other 32 windows of Block 4 will have replacements identical to existing windows.

Revision	Description of Revision	By	Date



Drawing:  
**Proposed Elevations of Blocks 3 & 4**

Project:  
**Window Replacement at Woodside House, Welwyn Garden City**

For:  
**First Garden Cities Homes**

CAM CONSTRUCTION ASSET MANAGEMENT

Scale: 1:100@A1 Date: 7 September 2020

Drawn: BG Drawing Number: 1351/6