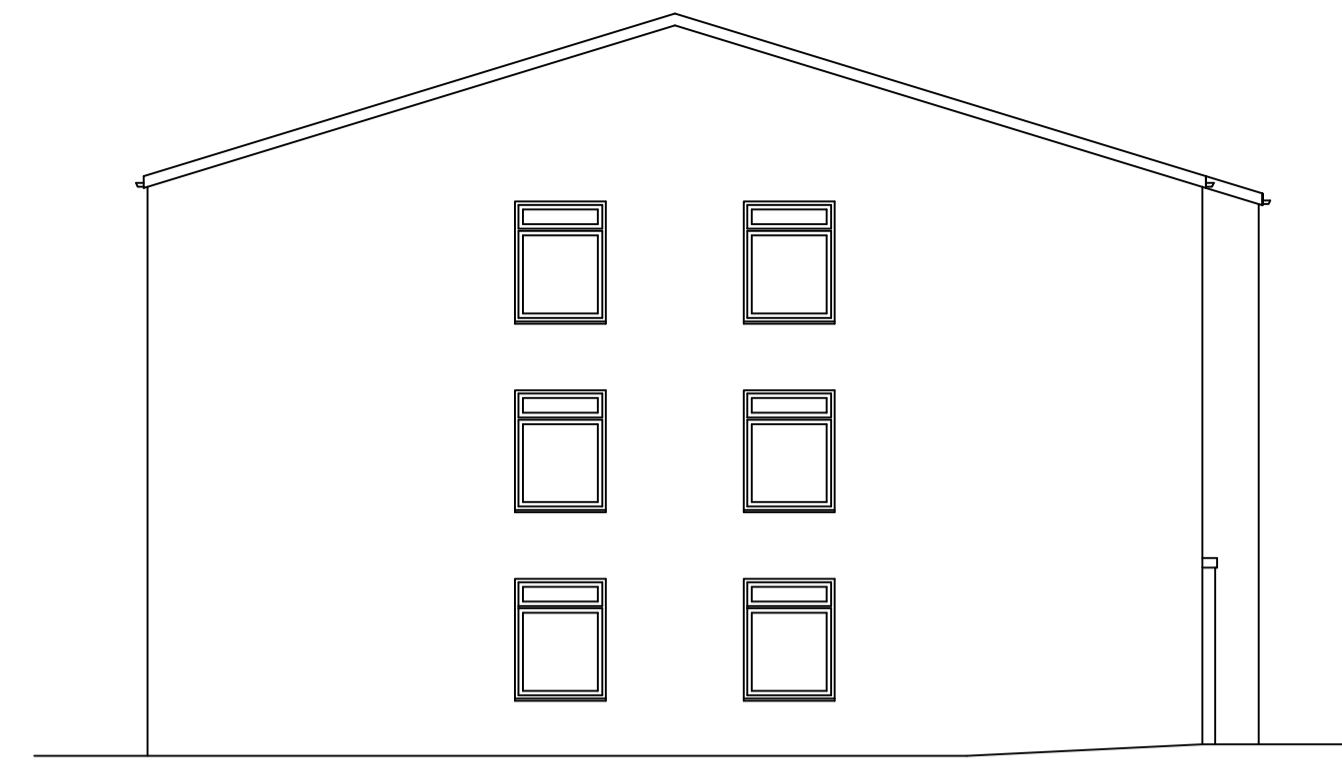
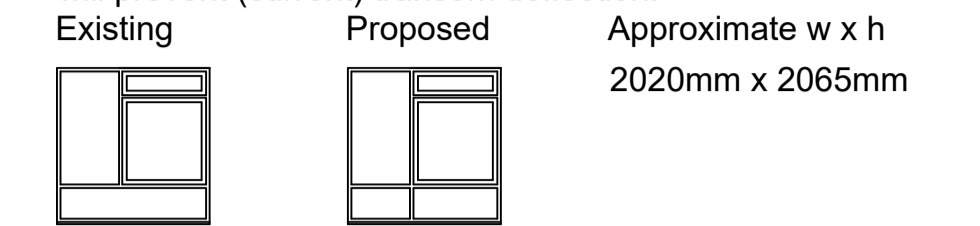


East Elevation of Block 1

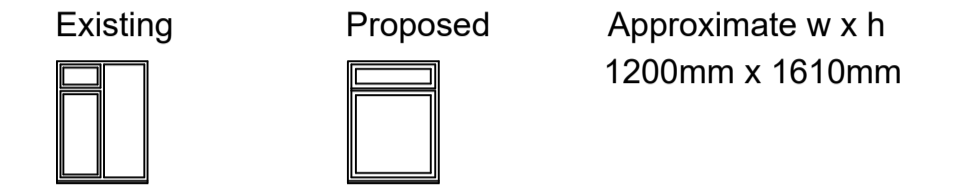


North Elevation of Block 1

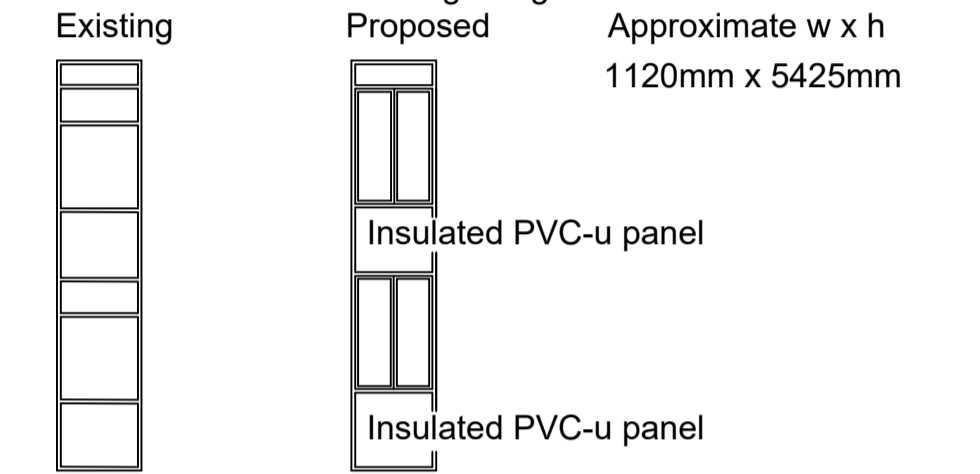
**Block 1**  
Twenty four windows, 12 in the East elevation and 12 in the West elevation, will be replaced with a modified version of the window. Insertion of a cill-to-head mullion will prevent (current) transom deflection.



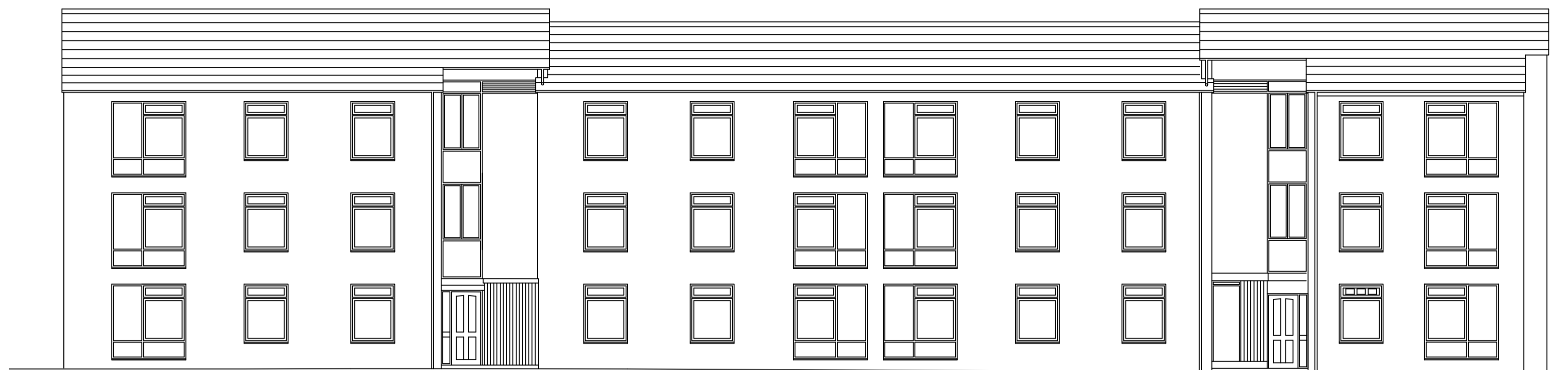
One window in the North elevation will be replaced with one of different type, restoring continuity to the elevation.



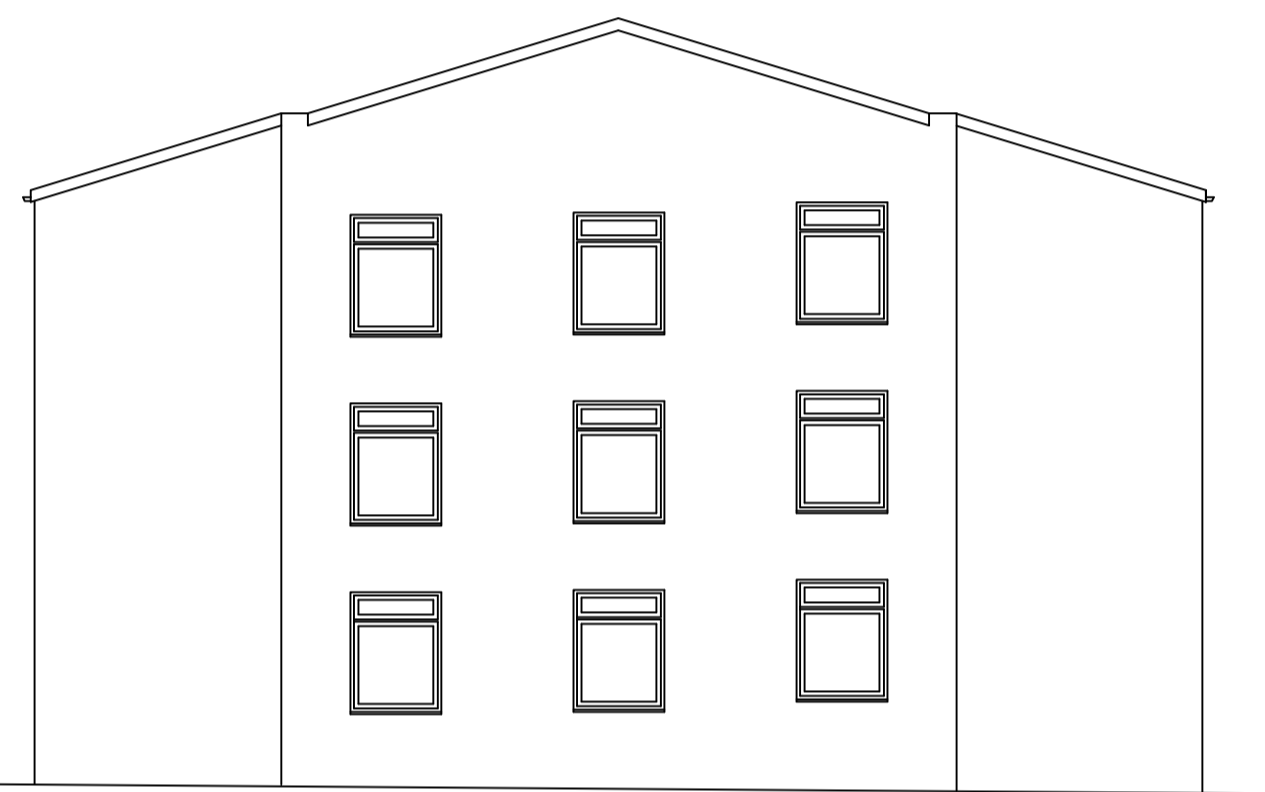
Fixed lights to the West side of the North staircase/entrance lobby will be removed for replacement by two pairs of side-hung opening casements. This will improve ventilation and match the glazing of the South staircase.



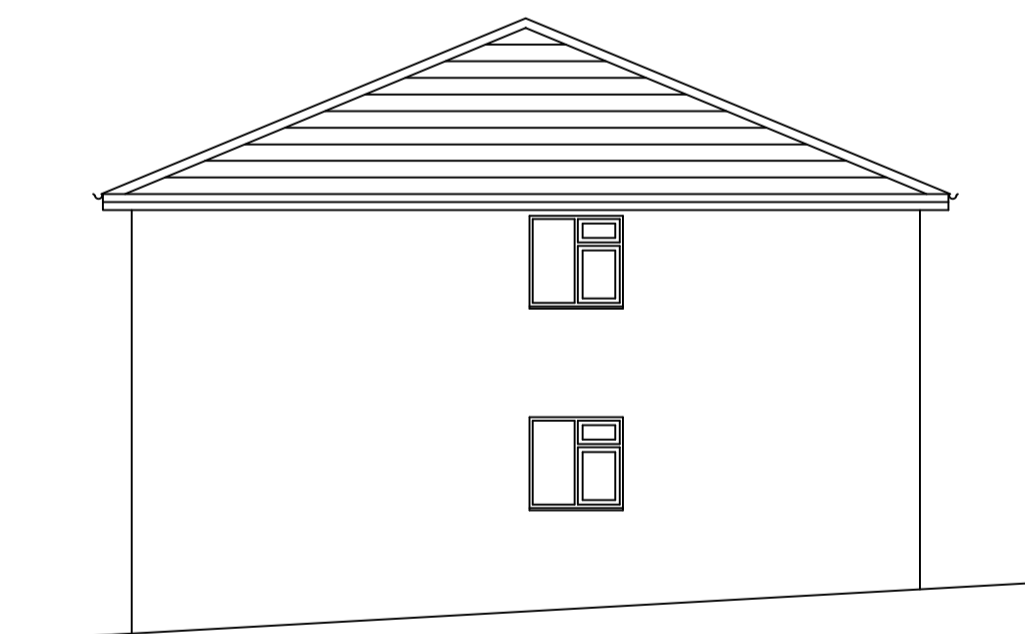
The other 64 windows of Block 1 will have replacements identical to existing windows.



West Elevation of Block 1



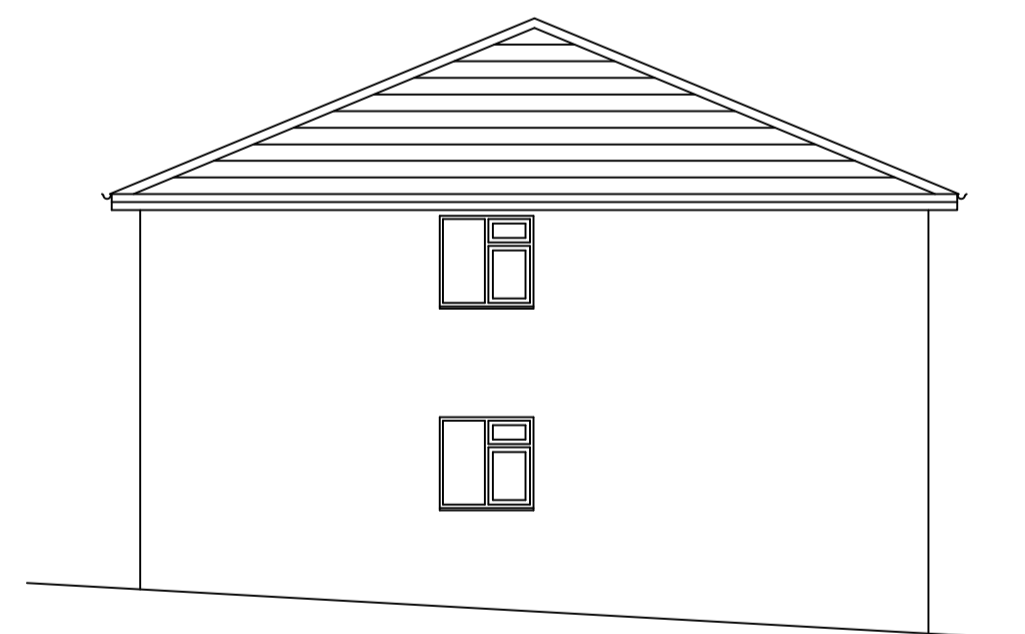
South Elevation of Block 1



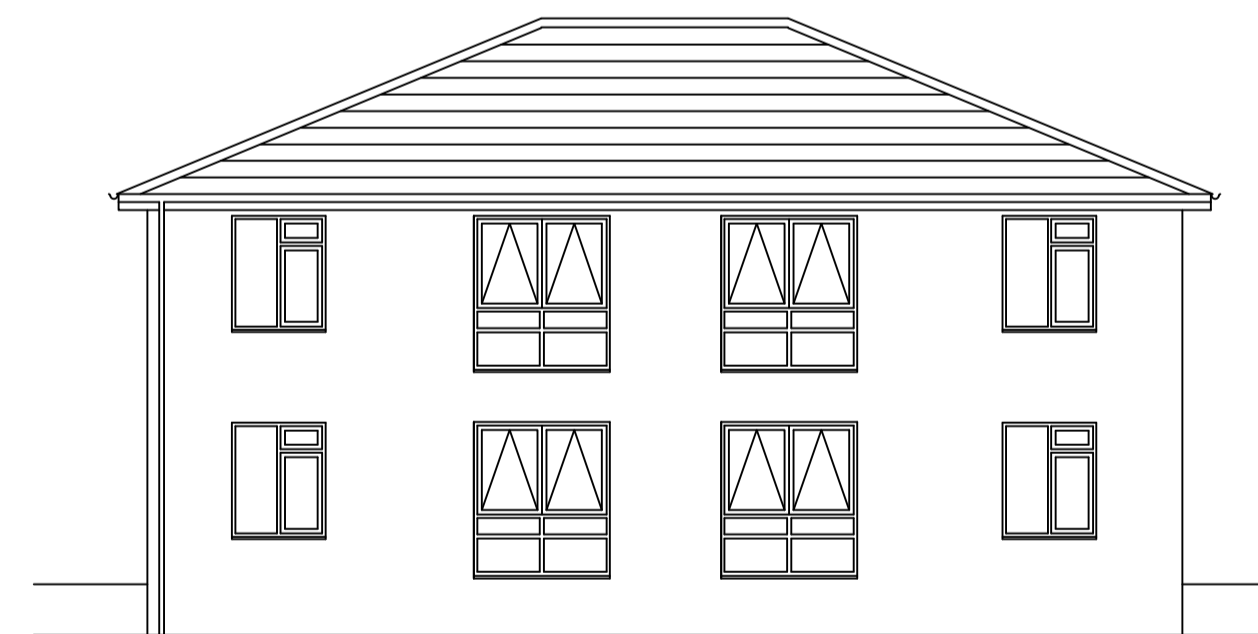
East Elevation of Block 2



North Elevation of Block 2

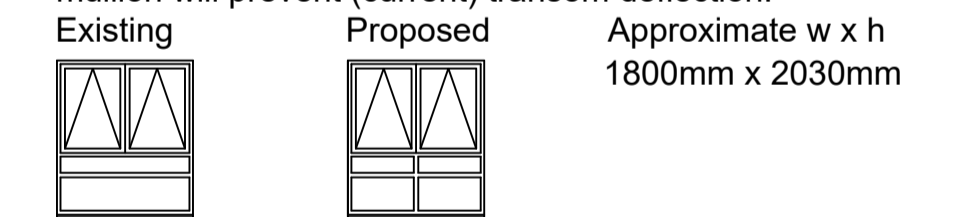


West Elevation of Block 2



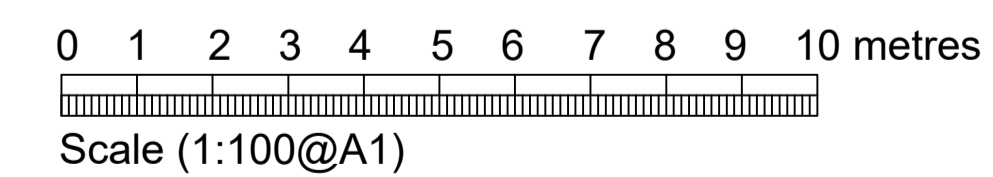
South Elevation of Block 2

**Block 2**  
Four windows in the South elevation will be replaced with a modified configuration. Insertion of a cill-to-head mullion will prevent (current) transom deflection.



The other 16 windows of Block 2 will have replacements identical to existing windows.

Revision	Description of Revision	By	Date



Drawing:	
Proposed Elevations of Blocks 1 & 2	
Project:	
Window Replacement at Woodside House, Welwyn Garden City	
For:	
First Garden Cities Homes	
CAM CONSTRUCTION ASSET MANAGEMENT	
Scale:	Date:
1:100@A1	7 September 2020
Drawn:	Drawing Number:
BG	135/5