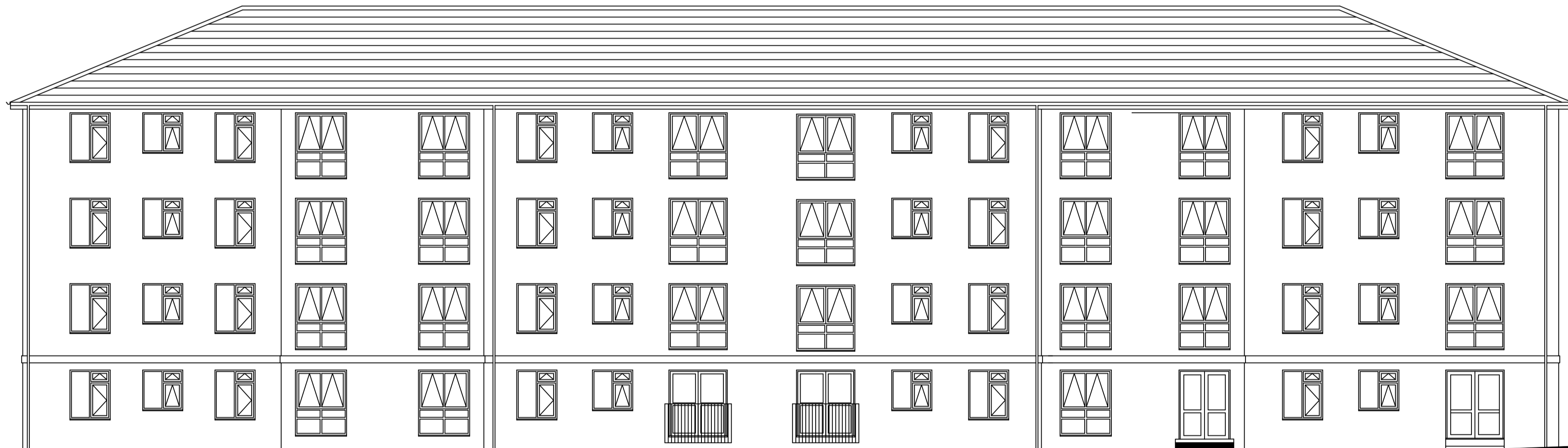


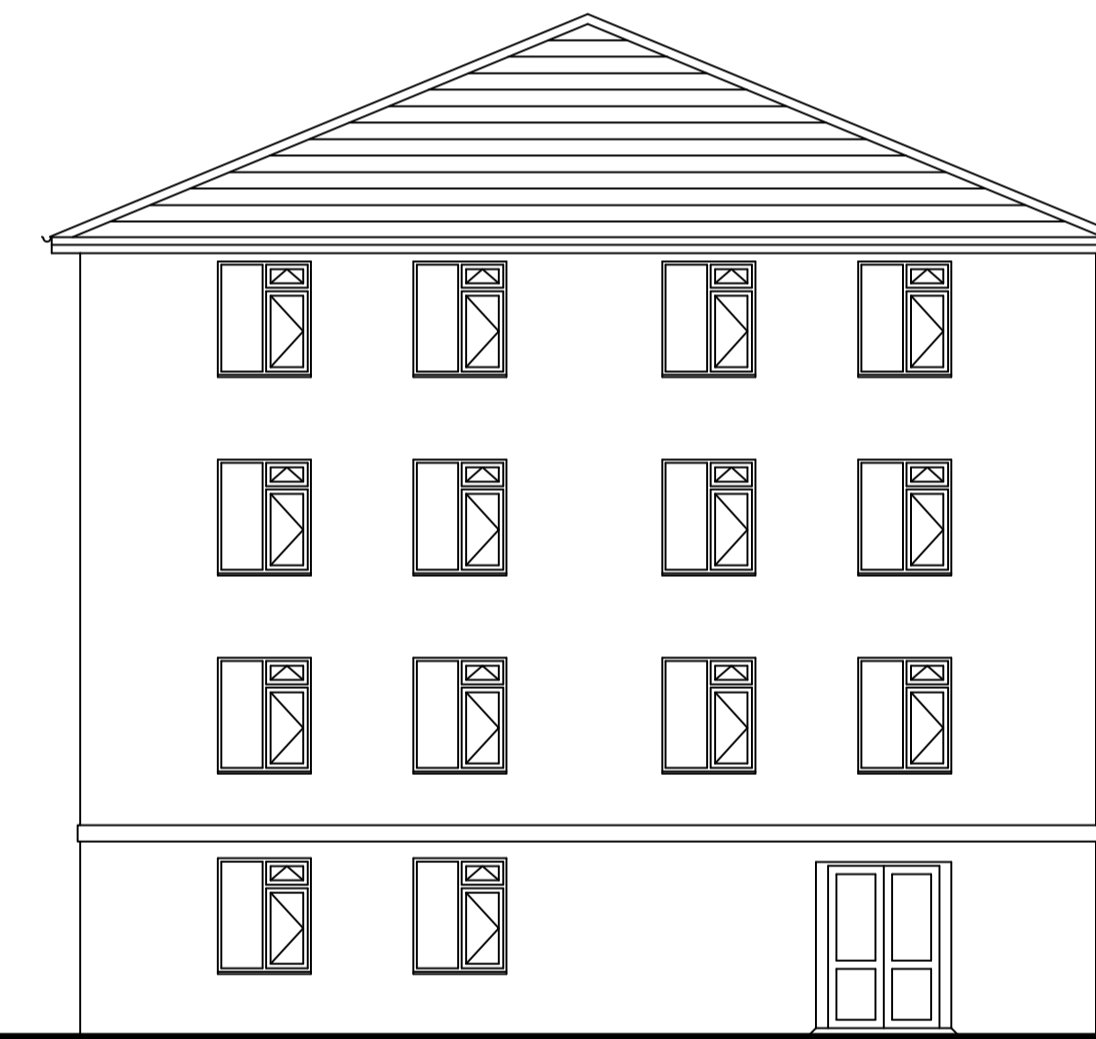
West Elevation



South Elevation



East Elevation



North Elevation

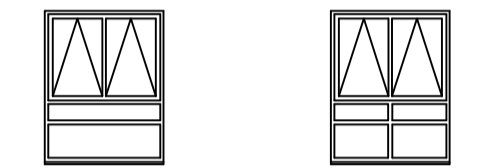
Twenty four windows, 9 in the West elevation 6 in the South elevation and 9 in the East elevation, will be replaced with a modified version of the window. Insertion of a cill-to-head mullion will prevent (current) transom deflection.

Existing Proposed Approximate w x h
1800mm x 2010mm

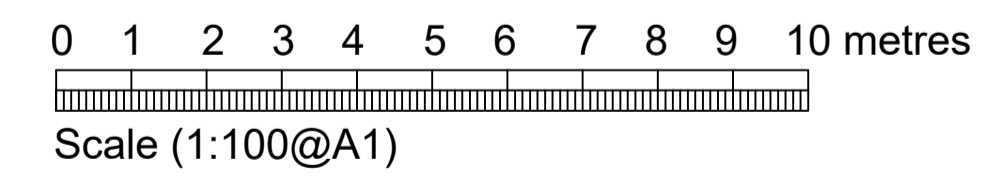


Twenty nine windows, 14 in the West elevation and 15 in the East elevation, will be replaced with a similarly modified version of the window. Insertion of a cill-to-head mullion will prevent (current) transom deflection.

Existing Proposed Approximate w x h
1580mm x 2010mm



The other 92 windows of Block 5 will have replacements identical to existing windows.



| Revision | Description of Revision | By | Date |
|----------|-------------------------|----|------|
| | | | |

| | |
|--|------------------|
| Drawing: | |
| Proposed Elevations of Block 5 | |
| Project: | |
| Window Replacement at Woodside House, Welwyn Garden City | |
| For: | |
| First Garden Cities Homes | |
| CAM CONSTRUCTION ASSET MANAGEMENT | |
| Scale: | Date: |
| 1:100@A1 | 7 September 2020 |
| Drawn: | Drawing Number: |
| BG | 1351/7 |