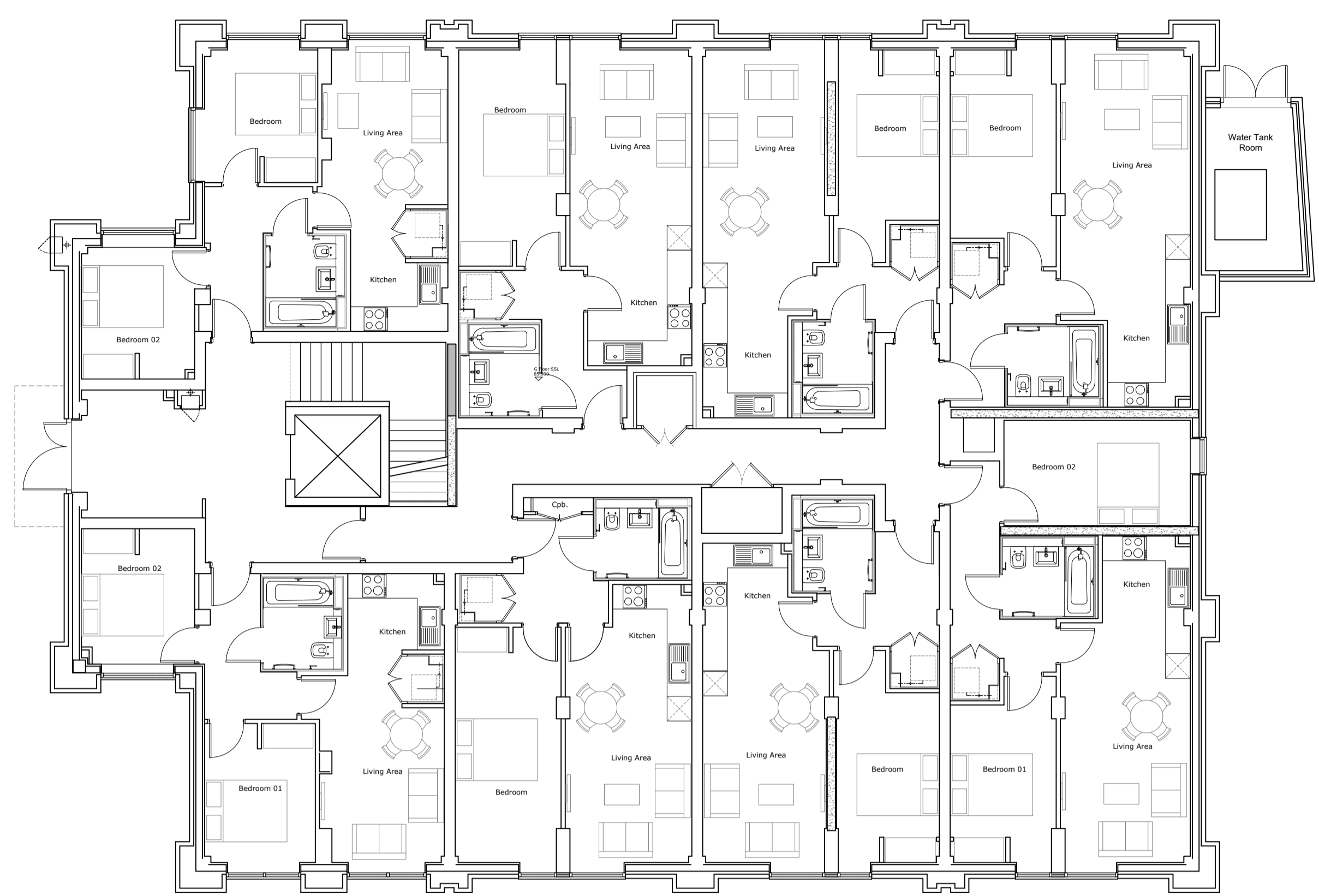


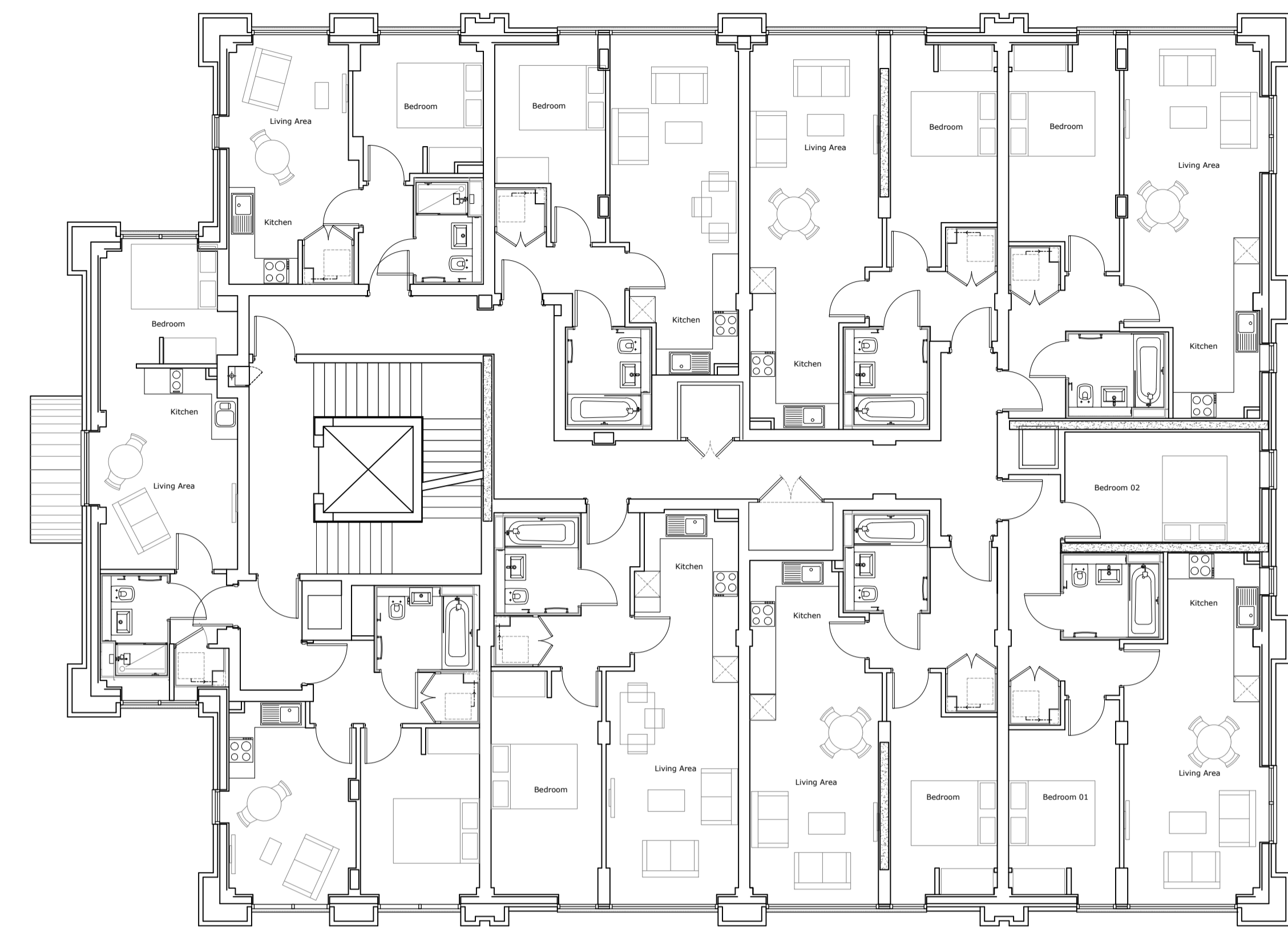
0m 2m 4m 6m 8m 10m

VISUAL SCALE 1:100 @ A1

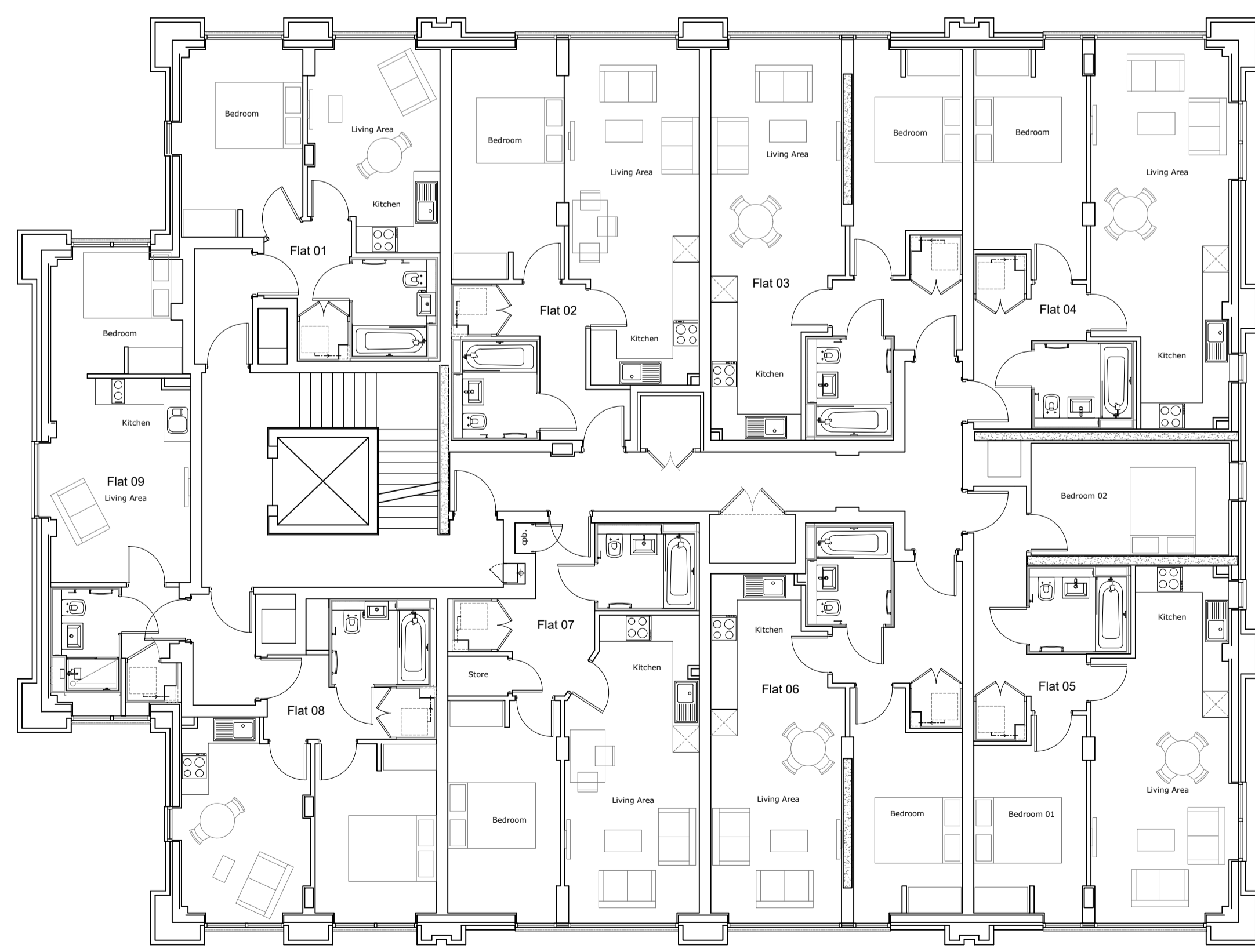
The contractor is to check all dimensions on site and report any discrepancies to the architect
 All rights described in chapter IV of the copyright, designs and patents act 1988 have been generally asserted
 Notes



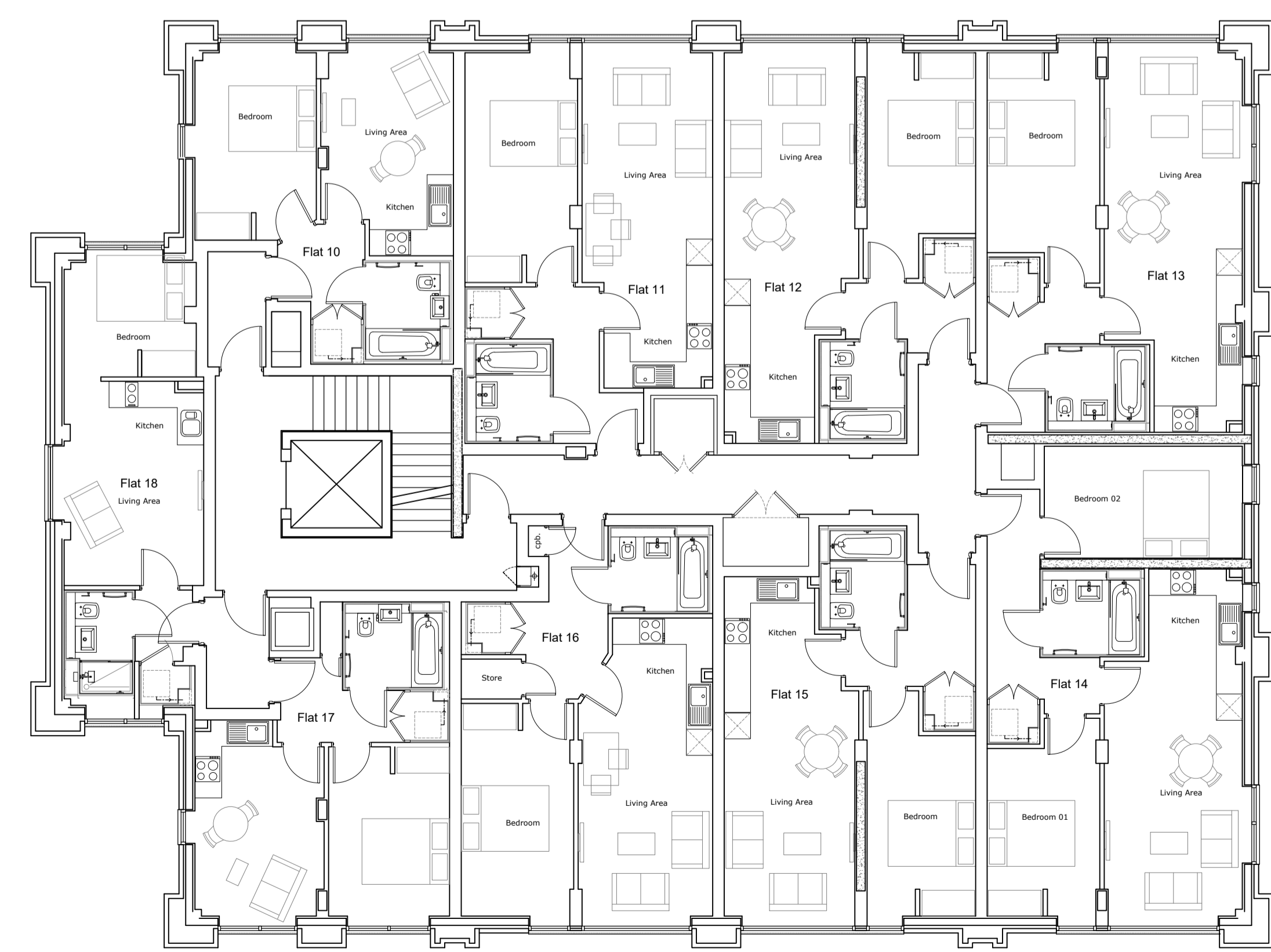
GROUND FLOOR; FORMER OFFICE ACCOMMODATION, TO BE CONVERTED TO RESIDENTIAL USE IN RELATION TO SEPARATE PRIOR APPROVAL PROCESS



FIRST FLOOR; FORMER OFFICE ACCOMMODATION, TO BE CONVERTED TO RESIDENTIAL USE IN RELATION TO SEPARATE PRIOR APPROVAL PROCESS



SECOND FLOOR



THIRD FLOOR

P2	Planning issue updates	23.03.20	tm	JH1
P1	Planning issue	18.02.20	tm	JH1
Rev	Description	Date	By	Chk

Blair & Partners
 202 The Quadrant, Lynchwood
 Exeter EX4 6RZ
 Telephone +44(0)1392 385688
 Website www.jeffersonsheard.com



Project
 Accord House
 Residential Development

Drawing
 Proposed Floor Plans
 Ground - Third Floor

Scale	1:100 @ A1	Drawn	tm	Date	Feb 2020
Drawing Purpose	FOR INFORMATION	Status	S2		
Ref	0974-JSA-XX-XX-SK-A-02101	Rev.	P2		