

Former Shredded Wheat Factory – South Site

Phase 1 – M4(3) Unit Location Mark-ups.

29-05-19

Key:-



M4(3) Units



PLEASE REFER TO LANDSCAPE ARCHITECTS INFORMATION

T1

Date: 02/15/19
 Drawn By: Author
 Checked by: Checker
 Scale @ A1: As indicated
 Scale @ A3:
 AO File No:

17-19 Foley Street
London W1W 6DW
T 020 7580 3490
F 020 7580 2917
info@colladocollins.com
www.colladocollins.com

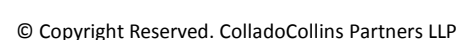
All works to be carried out in accordance with relevant BS/EN standards, relevant Codes of Practice and Building Regulations

Design, materials and construction detailing to be carried out by trade contractor.
All trade packages to be carried out under warranties by contractor.
REFER TO ARCHITECTS'S SPECIFICATION AND ASSOCIATED ADDENDA.

The main Contractor/Management Contractor is responsible for co-ordination of the scope and sequence of all Sub-Contractors' work.

- All works to be specified and constructed/sealed to achieve an air leakage rate of no > 3 m3/(m2.hr)@50Pa or less.
- For all Commercial shell elements, all air seals (strips & flexiblesheets in accordance to manufactures requirements) to be installed to achieve an air leakage rate of > 10m3/m2.hr/@50pa.

CONTRACT DOCUMENTATION
PLEASE NOTE THAT THIS
DRAWING IS FOR DESIGN INTENT



17-19 Foley Street
London W1W 6DW
T 020 7580 3490
F 020 7580 2917
info@colladocollins.com
www.colladocollins.com

Date: 02/15/19
Drawn By: Author
Checked by: Checker
Scale @ A1: 1 : 200
Scale @ A3:
CAD File No:

STAGE 4
18009-CCA-00-01 -DR-A-20.101



NOTES

GENERAL NOTE

All works to be carried out in accordance with relevant BS/EN standards, relevant Codes of Practice and Building Regulations

PACKAGES

Design, materials and construction detailing to be carried out by trade contractor.
All trade packages to be carried out under warranties by contractor.
REFER TO ARCHITECT'S SPECIFICATION AND ASSOCIATED ADDENDA.

CO-ORDINATION

The main Contractor/Management Contractor is responsible for co-ordination of the scope and sequence of all Sub-Contractors' work.

All secondary steel packages are indicative, to be fully designed and provided by contractor's steel fabricator.

SUSTAINABILITY

- All works to be specified and constructed/sealed to achieve an air leakage rate of no > 3 m³/(m²·hr)@50Pa or less.
- For all Commercial shell elements, all air seals (strips & flexible sheets in accordance to manufacturers requirements) to be installed to achieve an air leakage rate of > 10m³/(m²·hr)@50Pa.

TENDER

CONTRACT DOCUMENTATION
PLEASE NOTE THAT THIS
DRAWING IS FOR DESIGN INTENT

ColladoCollins Architects

17-19 Foley Street
London W1W 6DW
T: 020 7580 3480
F: 020 7580 2917
info@colladocollins.com
www.colladocollins.com

Date: 02/15/19
Drawn by: Author
Checked by: Checker
Scale: A1: 1:200
Scale: A2: 1:200
Scale: A3: 1:200
Scale: A4: 1:200
Scale: A5: 1:200

Plutus Estates (WGC) Limited and
Metropolitan Housing Trust
Former Shredded Wheat Factory
Phase 1 - Third Floor GA Plan

STAGE 4
18009-CCA-00-03 -DR -A-20.103

T1
Tender



NOTES

GENERAL NOTE

All works to be carried out in accordance with relevant BS/EN standards, relevant Codes of Practice and Building Regulations

PACKAGES

Design, materials and construction detailing to be carried out by trade contractor.
All trade packages to be carried out under warranties by contractor.
REFER TO ARCHITECT'S SPECIFICATION AND ASSOCIATED ADDENDA.

CO-ORDINATION

The main Contractor/Management Contractor is responsible for co-ordination of the scope and sequence of all Sub-Contractors' work.

All secondary steel packages are indicative, to be fully designed and provided by contractor's steel fabricator.

SUSTAINABILITY

- All works to be specified and constructed/sealed to achieve an air leakage rate of no > 3 m3/(m2.hr)/@50Pa or less.
- For all Commercial shell elements, all air seals (strips & flexible sheets in accordance to manufacturers requirements) to be installed to achieve an air leakage rate of > 10m3/m2.hr/@50Pa.

TENDER

CONTRACT DOCUMENTATION
PLEASE NOTE THAT THIS
DRAWING IS FOR DESIGN INTENT

ColladoCollins Architects

17-19 Foley Street
London W1W 6DW
T: 020 7580 1400
F: 020 7580 2917
info@colladocollins.com
www.colladocollins.com

Date: 02/15/19
Drawn By: Author
Checked By: Checker
Scale: A1: 1:200
Scale: A2:
CAD File No:

Plutus Estates (WGC) Limited and Metropolitan Housing Trust
Former Shredded Wheat Factory
Phase 1 - Fourth Floor GA Plan

STAGE 4
18009-CCA-00-05-DR-A-20.104

T1

GENERAL NOTE

All works to be carried out in accordance with relevant BS/EN standards, relevant Codes of Practice and Building Regulations

PACKAGES

Design, materials and construction detailing to be carried out by trade contractor.
All trade packages to be carried out under warranties by contractor.
REFER TO ARCHITECTS'S SPECIFICATION AND ASSOCIATED ADDENDA.

CO-ORDINATION

The main Contractor/Management Contractor is responsible for co-ordination of the scope and sequence of all Sub-Contractors' work.

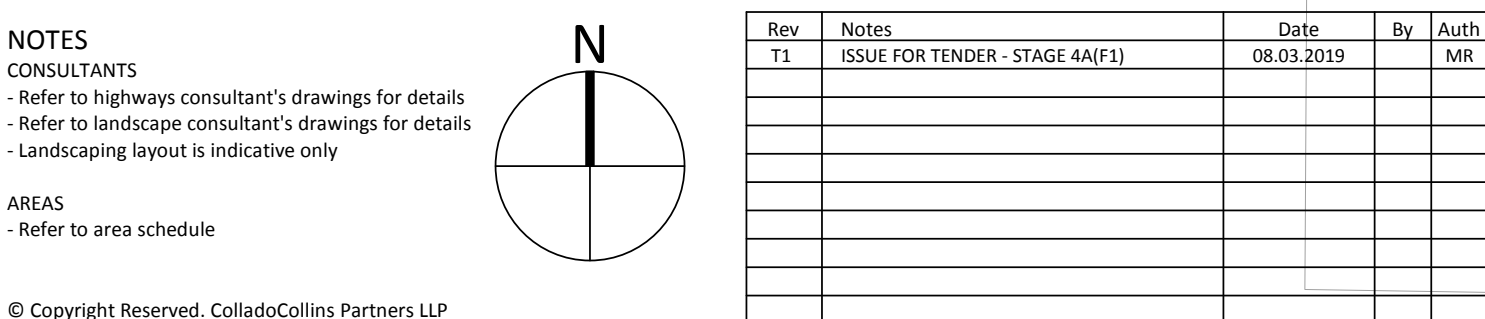
All secondary steel packages are indicative, to be fully designed and provided by contractor's steel fabricator.

SUSTAINABILITY

- All works to be specified and constructed/sealed to achieve an air leakage rate of no $> 3 \text{ m}^3/(\text{m}^2.\text{hr})@50\text{Pa}$ or less.

- For all Commercial shell elements, all air seals (strips & flexiblesheets in accordance to manufactures requirements) to be installed to achieve an air leakage rate of $> 10\text{m}^3/\text{m}^2.\text{hr}@50\text{pa}$.

CONTRACT DOCUMENTATION
PLEASE NOTE THAT THIS
DRAWING IS FOR DESIGN INTENT



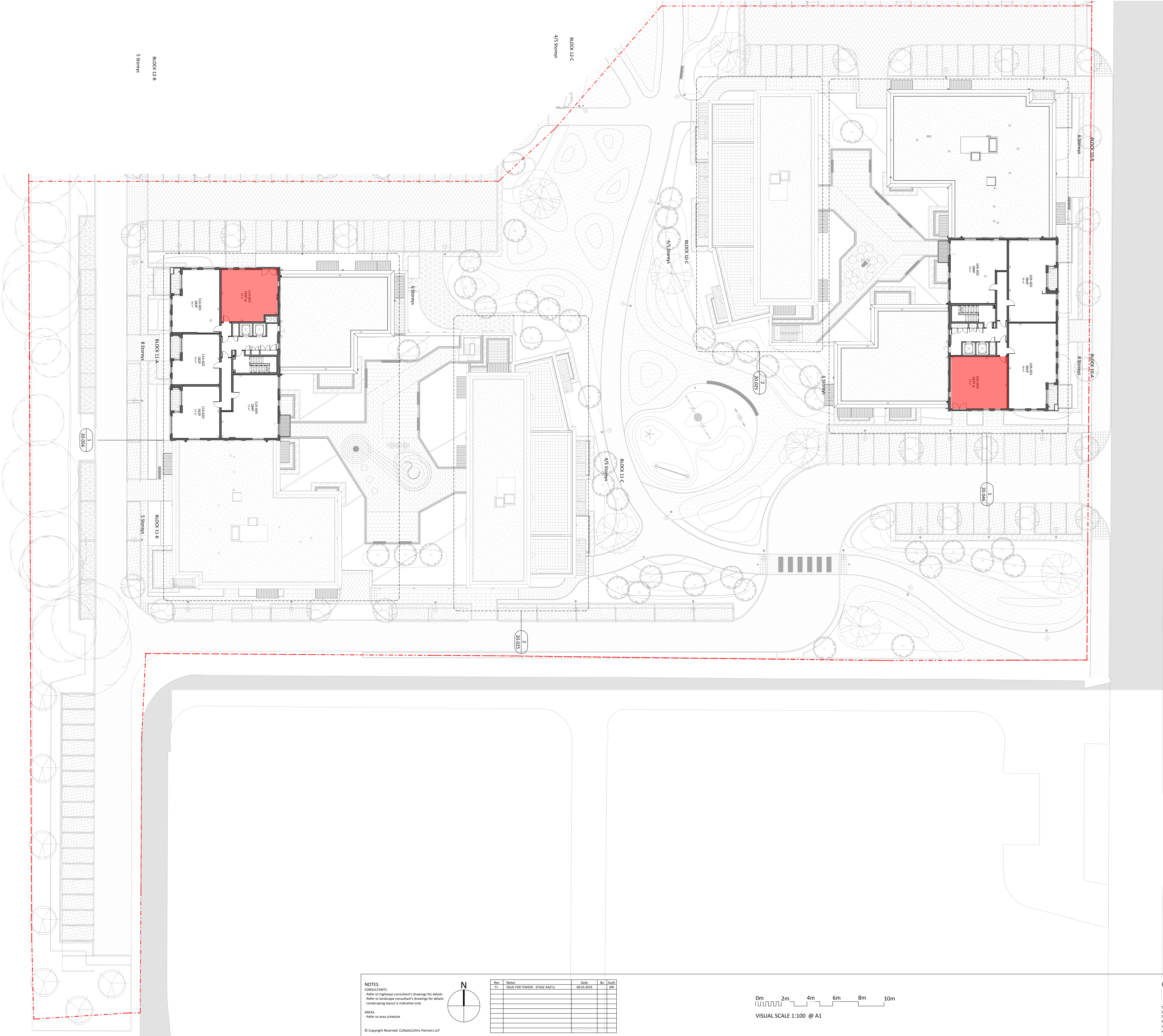
17-19 Foley Street
London W1W 6DW
T 020 7580 3450
F 020 7580 2917
info@colladocollins.com
www.colladocollins.com

Date: 02/15/19
Drawn By: Author
Checked by: Checker
Scale @ A1: 1 : 200
Scale @ A3:
CAD File No:

Plutus Estates (WGC) Limited and
Metropolitan Housing Trust
Former Shredded Wheat Factory
Phase 1 - Fifth Floor GA Plan

STAGE 4 [T1]
18009-CCA-00-05 -DR -A-20.105 Revisions

Г1



NOTES

GENERAL NOTE

All works to be carried out in accordance with relevant BS/EN standards, relevant Codes of Practice and Building Regulations

PACKAGES

Design, materials and construction detailing to be carried out by trade contractor.
All trade packages to be carried out under warranties by contractor.
REFER TO ARCHITECT'S SPECIFICATION AND ASSOCIATED ADDENDA.

CO-ORDINATION

The main Contractor/Management Contractor is responsible for co-ordination of the scope and sequence of all Sub-Contractors' work.

All secondary steel packages are indicative, to be fully designed and provided by contractor's steel fabricator.

SUSTAINABILITY

- All works to be specified and constructed/sealed to achieve an air leakage rate of no > 3 m³/(m².hr)/@50pa or less.
- For all Commercial shell elements, all air seals (strips & flexible sheets in accordance to manufacturers requirements) to be installed to achieve an air leakage rate of > 10m³/(m².hr)/@50pa.

TENDER

CONTRACT DOCUMENTATION

PLEASE NOTE THAT THIS

DRAWING IS FOR DESIGN INTENT

NOTES

CONSULTANTS

- Refer to highway consultant's drawings for details
- Refer to landscape consultant's drawings for details
- Landscaping layout is indicative only

AREAS

- Refer to area schedule

© Copyright Reserved. ColladoCollins Partners LLP

Rev

T1

Notes

ISSUE FOR TENDER - STAGE A&F1

Date

08.03.2019

By

MR

Auth

MR

0m

2m

4m

6m

8m

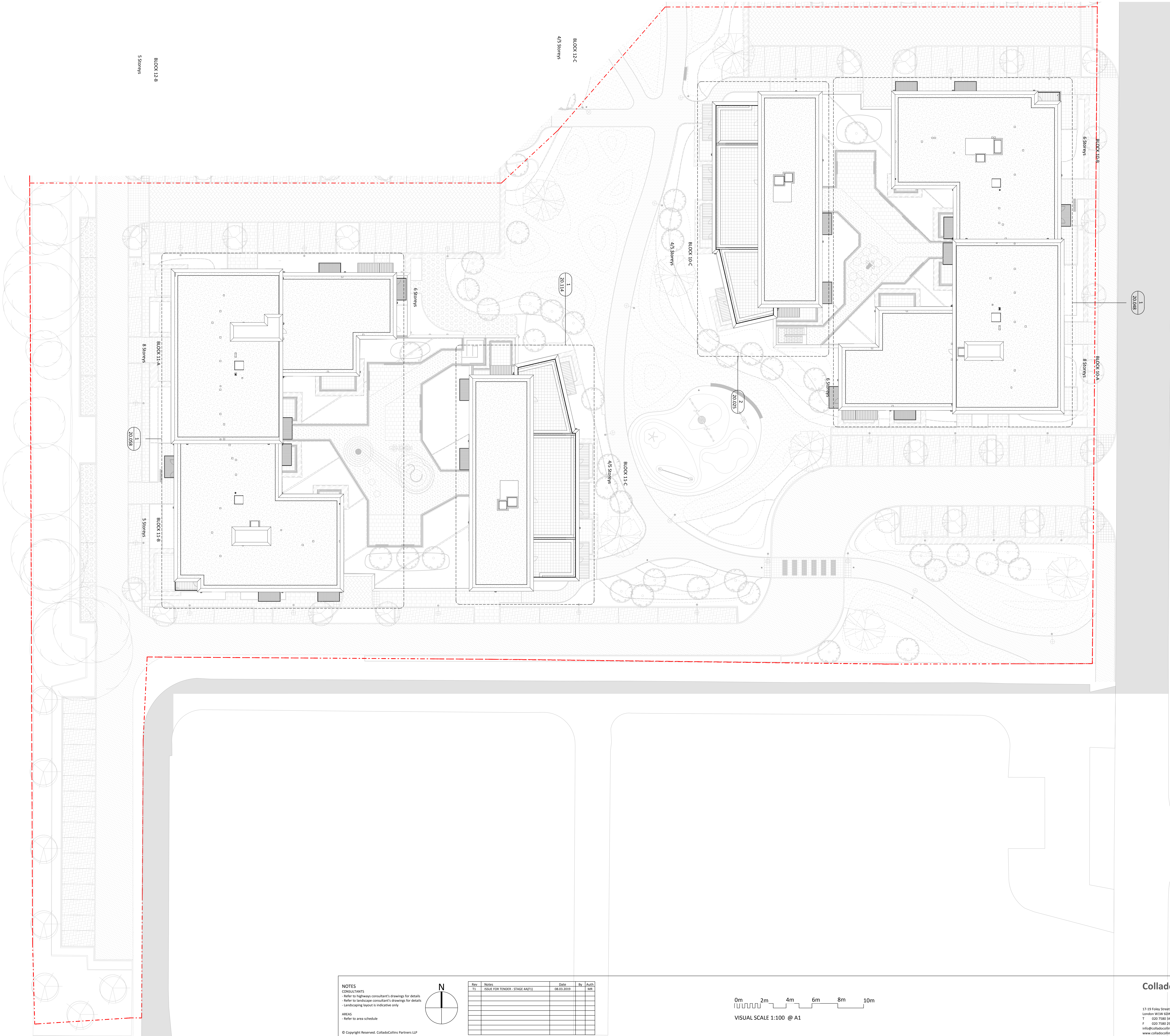
10m

VISUAL SCALE 1:100 @ A1

ColladoCollins Architects

17-19 Foley Street
London W1W 6DW
T: 020 7580 1400
F: 020 7580 2917
info@colladocollins.com
www.colladocollins.com

Date: 02/15/19
Drawn By: Author
Checked By: Checker
Scale @ A1: 1:200
Scale @ A2: 1:200
Scale @ A3: 1:200
Scale @ A4: 1:200
Scale @ A5: 1:200
Scale @ A6: 1:200



NOTES

GENERAL NOTE

All works to be carried out in accordance with relevant BS/EN standards, relevant Codes of Practice and Building Regulations

PACKAGES

Design, materials and construction detailing to be carried out by trade contractor.
All trade packages to be carried out under warranties by contractor.
REFER TO ARCHITECT'S SPECIFICATION AND ASSOCIATED ADDENDA.

CO-ORDINATION

The main Contractor/Management Contractor is responsible for co-ordination of the scope and sequence of all Sub-Contractors' work.

All secondary steel packages are indicative, to be fully designed and provided by contractor's steel fabricator.

SUSTAINABILITY

- All works to be specified and constructed/sealed to achieve an air leakage rate of no > 3 m³/(m²·hr)@50Pa or less.
- For all Commercial shell elements, all air seals (strips & flexible sheets in accordance to manufacturers requirements) to be installed to achieve an air leakage rate of > 10m³/m²·hr/@50Pa.

TENDER

CONTRACT DOCUMENTATION
PLEASE NOTE THAT THIS
DRAWING IS FOR DESIGN INTENT

ColladoCollins Architects

17-19 Foley Street
London W1W 6DW
T: 020 7580 3480
F: 020 7580 2917
info@colladocollins.com
www.colladocollins.com

Date: 02/15/19
Drawn By: Author
Checked By: Checker
Scale: A1: 1:200
Scale: A2: CAD File No.

Plutus Estates (WGC) Limited and
Metropolitan Housing Trust
Former Shredded Wheat Factory
Phase 1 - Roof GA Plan

STAGE 4
18009-CCA-00-RF-DR-A-20.108

T1
Revision