

Accord House

External Lighting

Est No.: 516920
Company.:
Contact.:

AGP Consultants Ltd
95 BUCKINGHAM PALACE ROAD
LONDON SW1W 0RP

Tel: 0207 828 8200
WWW: agpconsultants.com

Accord House

Thorlux Lighting
Merse Road
Redditch
Worcestershire

AGP Consultants Ltd
95 BUCKINGHAM PALACE ROAD
LONDON SW1W 0RP

Tel: 0207 828 8200
WWW: agpconsultants.com

THORLUX RL19069 Realta LED Polycarbonate Cover - 8W - SMART - Wide Distribution - 4000K / Luminaire Data Sheet

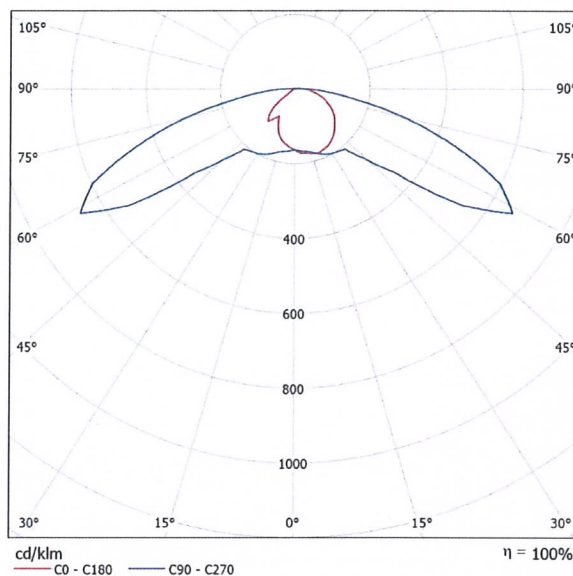


Luminaire classification according to CIE: 98
CIE flux code: 27 60 90 98 100

Stylish IP66 wall mounted luminaires. Die-cast aluminium body with a choice of high efficiency glass or polycarbonate refractor. Less than 2% upward light.

Applications: Wide versions ideal for uniform pathway lighting for schools, hospitals, retail and other commercial environments. Area version ideal for general area lighting requiring a forward throw light distribution.

Luminous emittance 1:



Due to missing symmetry properties, no UGR table can be displayed for this luminaire.

Accord House

Thorlux Lighting
Merse Road
Redditch
Worcestershire

AGP Consultants Ltd
95 BUCKINGHAM PALACE ROAD
LONDON SW1W 0RP

Tel: 0207 828 8200
WWW: agpconsultants.com

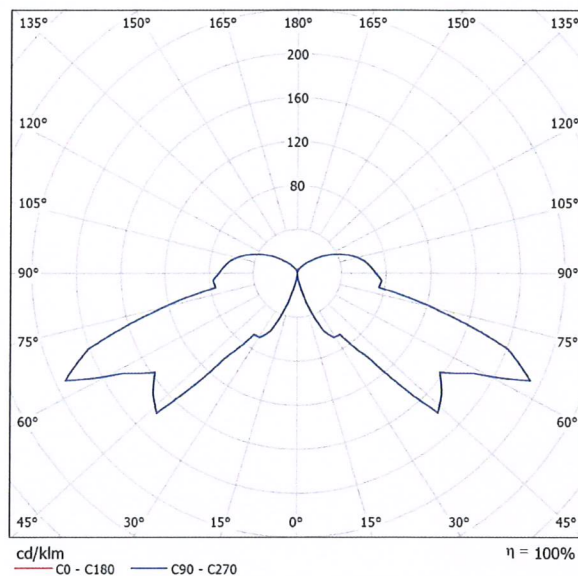
THORLUX PRB17523 Probe XL LED 1040mm - 24W - 4000K / Luminaire Data Sheet



Luminaire classification according to CIE: 78
CIE flux code: 12 45 82 78 100

LED bollard luminaire (1040mm version)

Luminous emittance 1:



Luminous emittance 1:

Glare Evaluation According to UGR											
		70	70	50	50	30	70	70	50	50	30
ρ Ceiling		50	30	50	30	30	50	30	50	30	30
ρ Walls		20	20	20	20	20	20	20	20	20	20
ρ Floor											
Room Size X Y	Viewing direction at right angles to lamp axis					Viewing direction parallel to lamp axis					
	2H	2H	12.1	13.5	12.7	14.1	14.8	12.1	13.5	12.7	14.1
	3H	15.5	16.8	16.1	17.4	18.2	15.5	16.8	16.1	17.4	18.2
	4H	16.1	17.4	16.8	18.0	18.8	16.1	17.4	16.8	18.0	18.8
	6H	16.4	17.6	17.1	18.2	19.0	16.4	17.6	17.1	18.2	19.0
	8H	16.5	17.6	17.2	18.3	19.1	16.5	17.6	17.2	18.3	19.1
	12H	16.6	17.7	17.3	18.4	19.2	16.6	17.7	17.3	18.4	19.2
4H	2H	13.4	14.6	14.1	15.3	16.1	13.4	14.6	14.1	15.3	16.1
	3H	16.5	17.6	17.2	18.3	19.1	16.5	17.6	17.2	18.3	19.1
	4H	17.2	18.2	17.9	18.9	19.7	17.2	18.2	17.9	18.9	19.7
	6H	17.6	18.4	18.3	19.1	20.0	17.6	18.4	18.3	19.1	20.0
	8H	17.7	18.5	18.4	19.2	20.1	17.7	18.5	18.4	19.2	20.1
	12H	17.9	18.6	18.6	19.3	20.2	17.9	18.6	18.6	19.3	20.2
8H	4H	17.4	18.2	18.1	18.9	19.8	17.4	18.2	18.1	18.9	19.8
	6H	17.9	18.5	18.6	19.3	20.2	17.9	18.5	18.6	19.3	20.2
	8H	18.1	18.7	18.9	19.4	20.4	18.1	18.7	18.9	19.4	20.4
	12H	18.4	18.9	19.2	19.7	20.6	18.4	18.9	19.2	19.7	20.6
12H	4H	17.4	18.1	18.1	18.9	19.8	17.4	18.1	18.1	18.9	19.8
	6H	17.9	18.5	18.7	19.2	20.2	17.9	18.5	18.7	19.2	20.2
	8H	18.2	18.7	18.9	19.5	20.4	18.2	18.7	18.9	19.5	20.4
Variation of the observer position for the luminaire distances S											
S = 1.0H		+0.1 / -0.1					+0.1 / -0.1				
S = 1.5H		+0.2 / -0.2					+0.2 / -0.2				
S = 2.0H		+0.6 / -0.5					+0.6 / -0.5				
Standard table		BK07					BK07				
Correction Summand		2.2					2.2				
Corrected Glare Indices referring to 1040lm Total Luminous Flux											

Accord House

Thorlux Lighting
Merse Road
Redditch
Worcestershire

AGP Consultants Ltd
95 BUCKINGHAM PALACE ROAD
LONDON SW1W 0RP

Tel: 0207 828 8200
WWW: agpconsultants.com

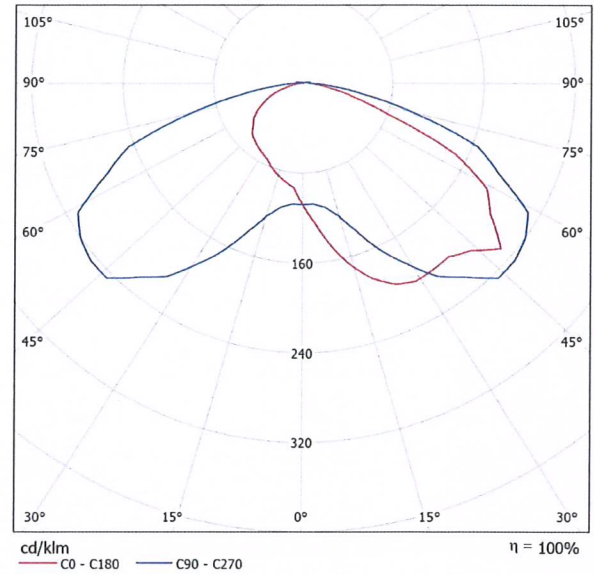
THORLUX SB17553 Starbeam LED - Area Distribution - 31W - 4000K / Luminaire Data Sheet



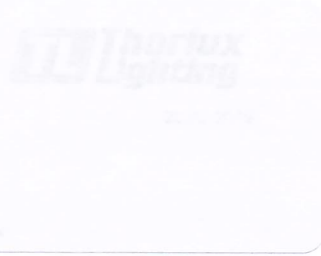
Luminaire classification according to CIE: 98
CIE flux code: 25 59 90 98 100

Supremely efficient long life IP66 pole top and wall mounted LED luminaires with aluminium cast body and wiring box and polycarbonate cover.

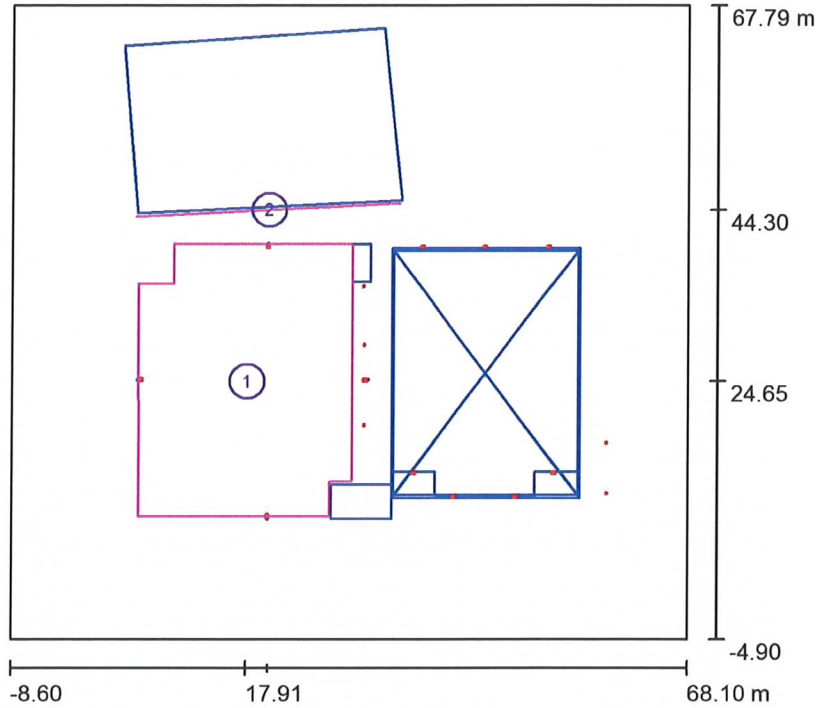
Luminous emittance 1:



Due to missing symmetry properties, no UGR table can be displayed for this luminaire.



Exterior Scene 1 / Calculation surfaces (results overview)



Scale 1 : 828

Calculation Surface List

No.	Designation	Type	Grid	E_{av} [lx]	E_{min} [lx]	E_{max} [lx]	u0	E_{min} / E_{max}
1	Car Parking Areas	perpendicular	15 x 11	9.08	2.65	22	0.292	0.122
2	Mercury House Fascia	perpendicular	37 x 9	3.32	0.92	8.20	0.277	0.112

Summary of Results

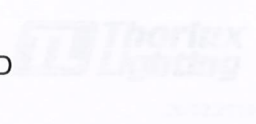
Type	Quantity	Average [lx]	Min [lx]	Max [lx]	u0	E_{min} / E_{max}
perpendicular	2	7.93	0.92	22	0.12	0.04

Accord House

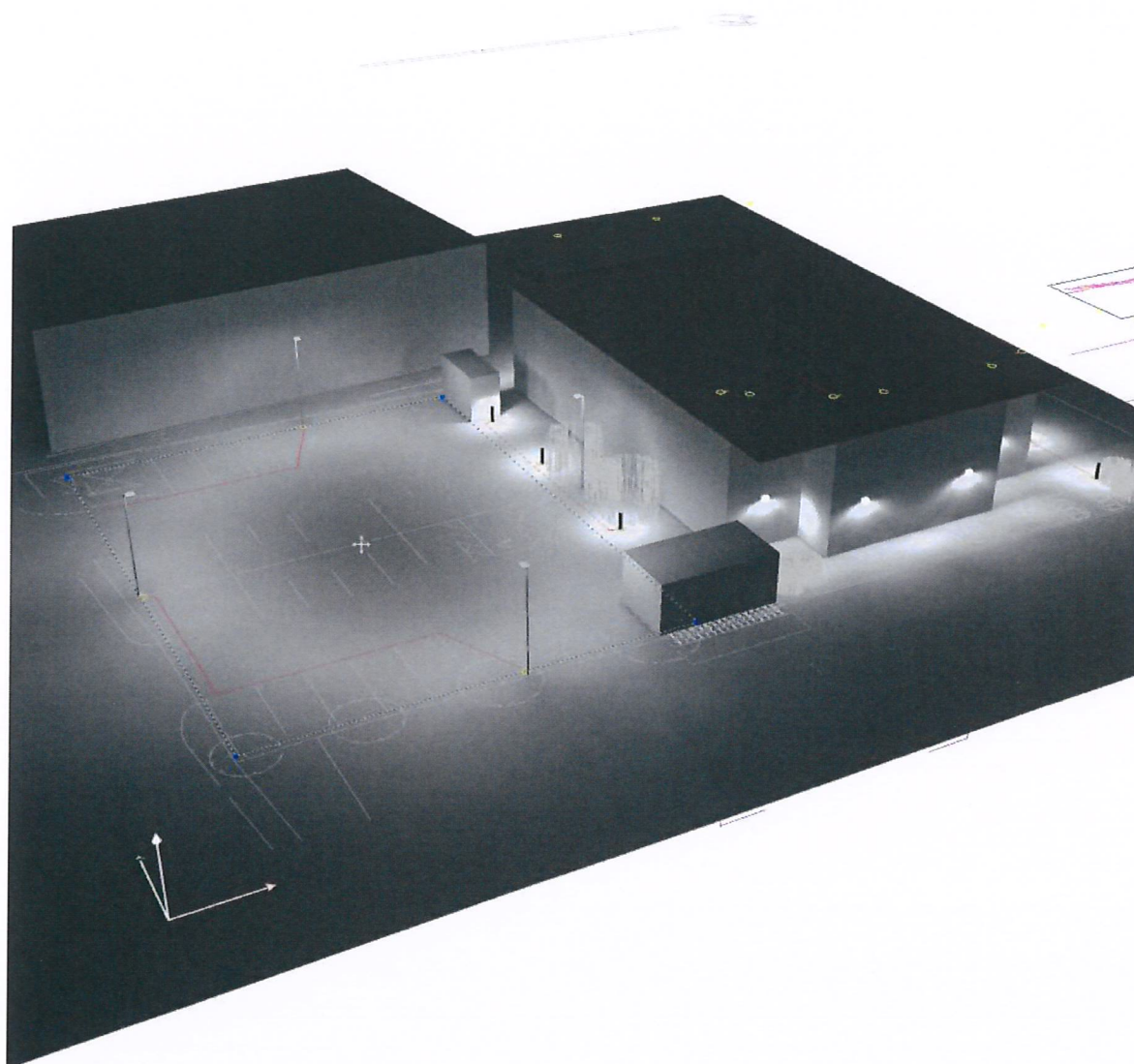
Thorlux Lighting
Merse Road
Redditch
Worcestershire

AGP Consultants Ltd
95 BUCKINGHAM PALACE ROAD
LONDON SW1W 0RP

Tel: 0207 828 8200
WWW: agpconsultants.com



Exterior Scene 1 / 3D Rendering



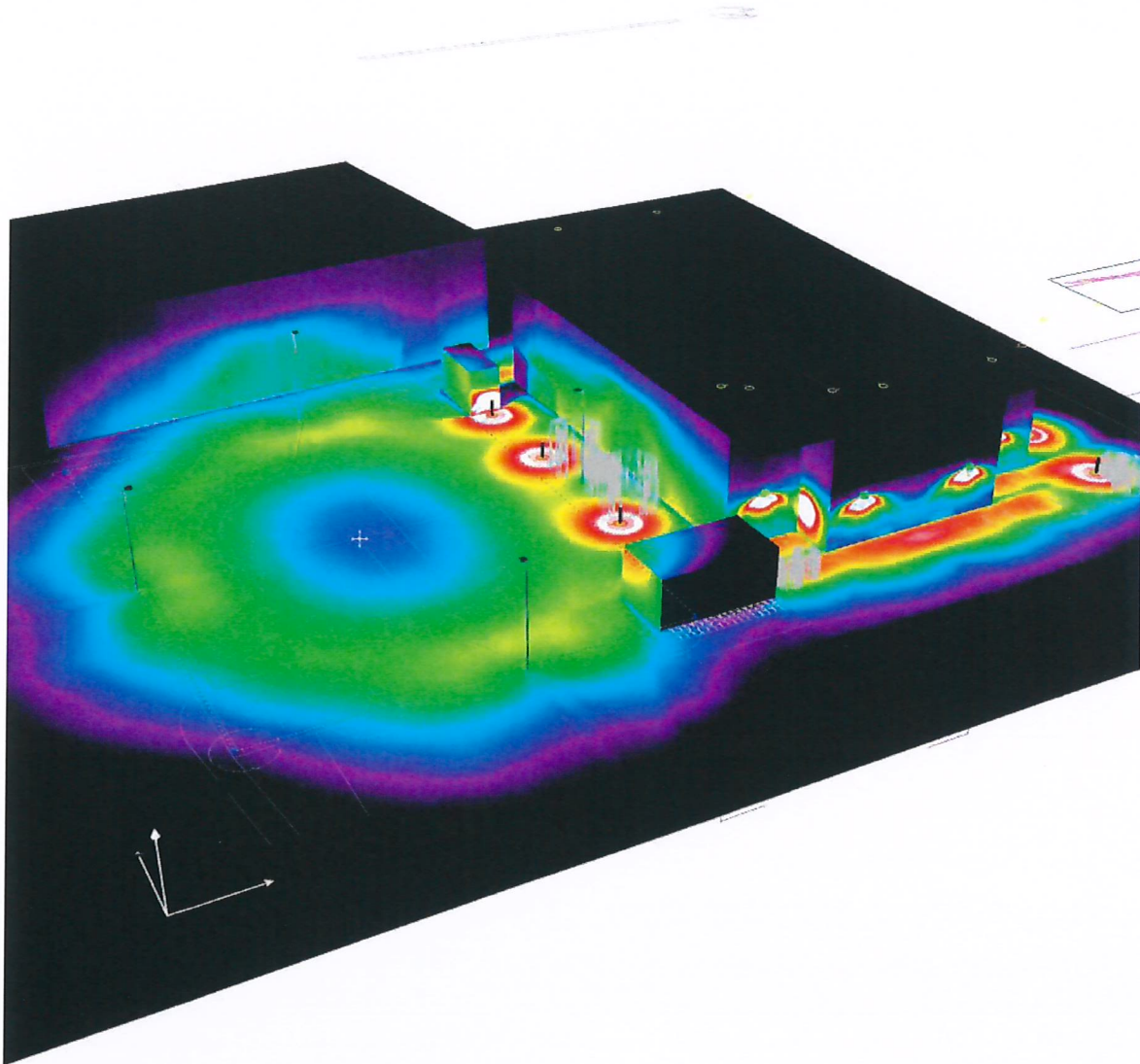
Accord House

Thorlux Lighting
Merse Road
Redditch
Worcestershire

AGP Consultants Ltd
95 BUCKINGHAM PALACE ROAD
LONDON SW1W 0RP

Tel: 0207 828 8200
WWW: agpconsultants.com

Exterior Scene 1 / False Colour Rendering



1 2 3 5 10 15 20 30 50 lx

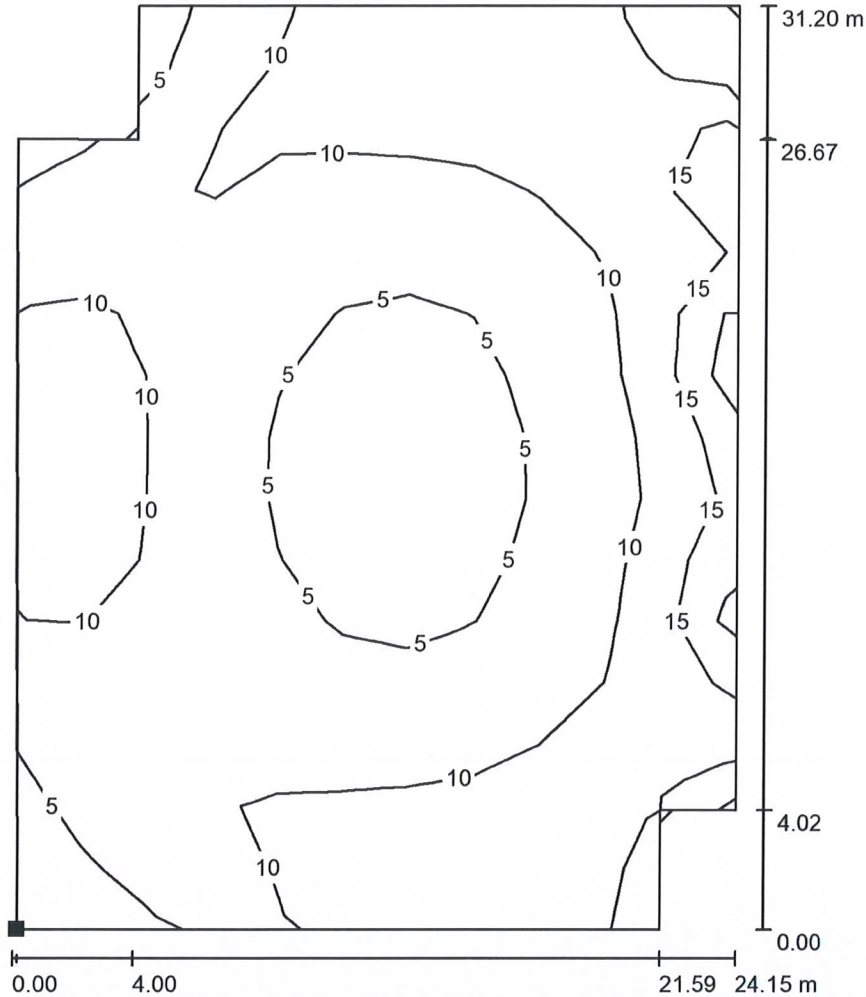
Accord House

Thorlux Lighting
Merse Road
Redditch
Worcestershire

AGP Consultants Ltd
95 BUCKINGHAM PALACE ROAD
LONDON SW1W 0RP

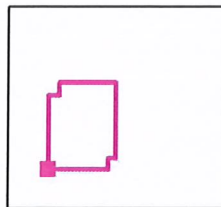
Tel: 0207 828 8200
WWW: agpconsultants.com

Exterior Scene 1 / Car Parking Areas / Isolines (E, Perpendicular)



Values in Lux, Scale 1 : 244

Position of surface in external scene:
Marked point:
(5.855 m, 9.175 m, 0.000 m)



Grid: 15 x 11 Points

E_{av} [lx]
9.08

E_{min} [lx]
2.65

E_{max} [lx]
22

u_0
0.292

E_{min} / E_{max}
0.122

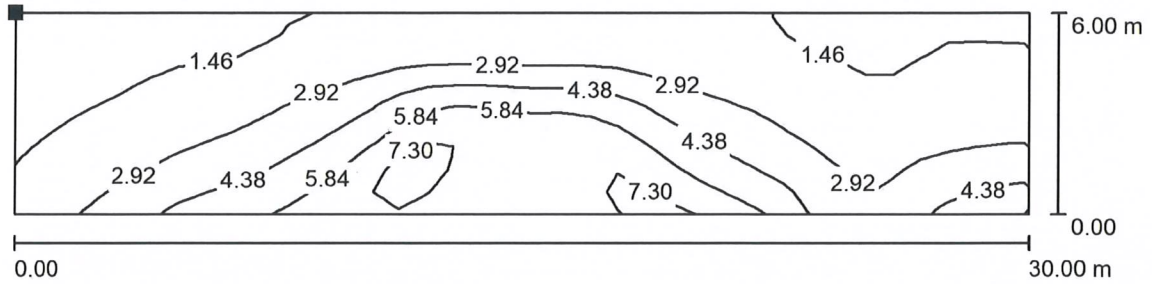
Accord House

Thorlux Lighting
Merse Road
Redditch
Worcestershire

AGP Consultants Ltd
95 BUCKINGHAM PALACE ROAD
LONDON SW1W 0RP

Tel: 0207 828 8200
WWW: agpconsultants.com

Exterior Scene 1 / Mercury House Fascia / Isolines (E, Perpendicular)

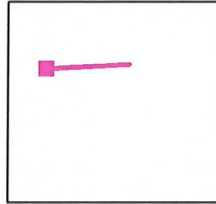


Values in Lux, Scale 1 : 215

Position of surface in external scene:

Marked point:

(5.394 m, 43.519 m, 7.000 m)



Grid: 37 x 9 Points

E_{av} [lx]
3.32

E_{min} [lx]
0.92

E_{max} [lx]
8.20

u_0
0.277

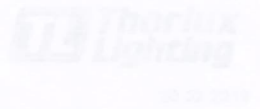
E_{min} / E_{max}
0.112

Accord House

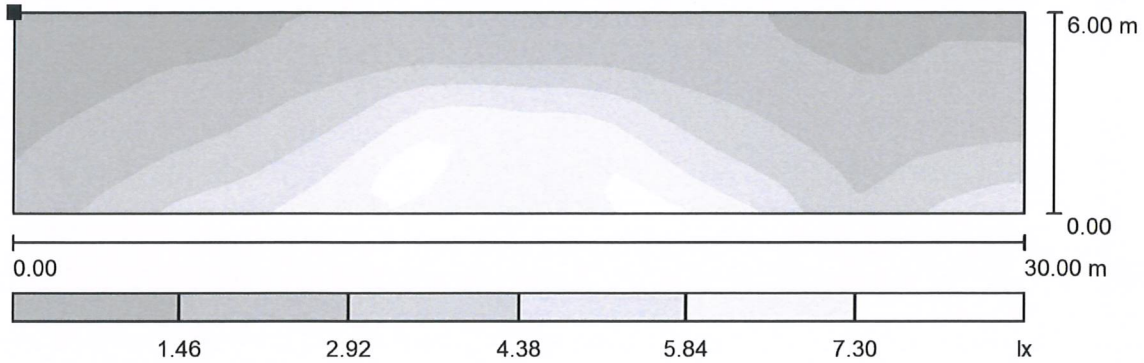
Thorlux Lighting
Merse Road
Redditch
Worcestershire

AGP Consultants Ltd
95 BUCKINGHAM PALACE ROAD
LONDON SW1W 0RP

Tel: 0207 828 8200
WWW: agpconsultants.com

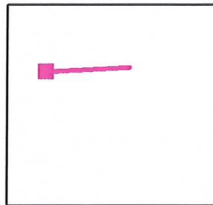


Exterior Scene 1 / Mercury House Fascia / Greyscale (E, Perpendicular)



Scale 1 : 215

Position of surface in external scene:
Marked point:
(5.394 m, 43.519 m, 7.000 m)



Grid: 37 x 9 Points

E_{av} [lx]
3.32

E_{min} [lx]
0.92

E_{max} [lx]
8.20

u_0
0.277

E_{min} / E_{max}
0.112