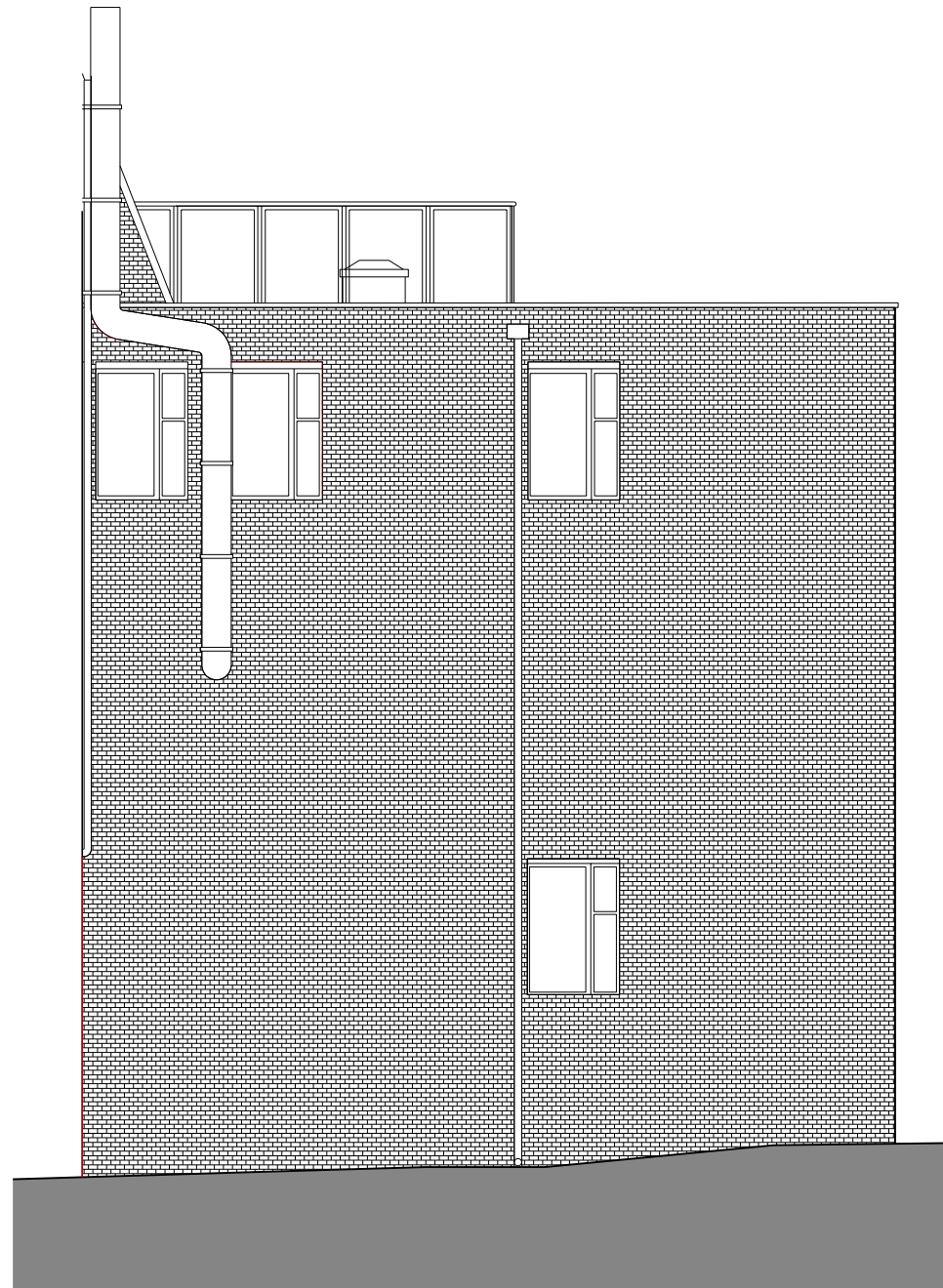


Elevation as approved through application reference number 6/2018/1057/FULL

Drawing No. A-251-p4



**01** Approved Courtyard Elevation - South  
1:100@A3

**PAPA** Papa Architects Ltd.  
222 Archway Road, Highgate,  
London N6 5AX  
Phone. +44(0)20 8348 8411  
Fax. +44 (0)20 8348 7411  
www.papaarchitects.co.uk

Client

Address  
1-7 Fountain House  
Howardsgate  
AL8 6AL

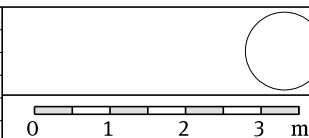
Drawing title  
Approved Courtyard  
Elevation - South

Project No. Date  
1815 Oct'18

Scale  
1:100 @ A3

Rev	Date	Reason For Issue	Chk
P01	16.10.12	For Client Review	AP

Drawing No.	Current Rev
10-214	P01



**Notes**  
All dimensions must be checked and Papa Architects are to be informed of any discrepancies prior to construction. Any DWG's issued by PAPA architects are to be read in conjunction with the associated PDF versions. This drawing and any of the details therein remain the copyright of Papa Architects Ltd. All drawings prepared by Papa Architects are not to be used for any submissions, area schedule calculations or used by any other Persons or Companies other than Papa Architects Ltd unless written consent has been given by Papa Architects Ltd.