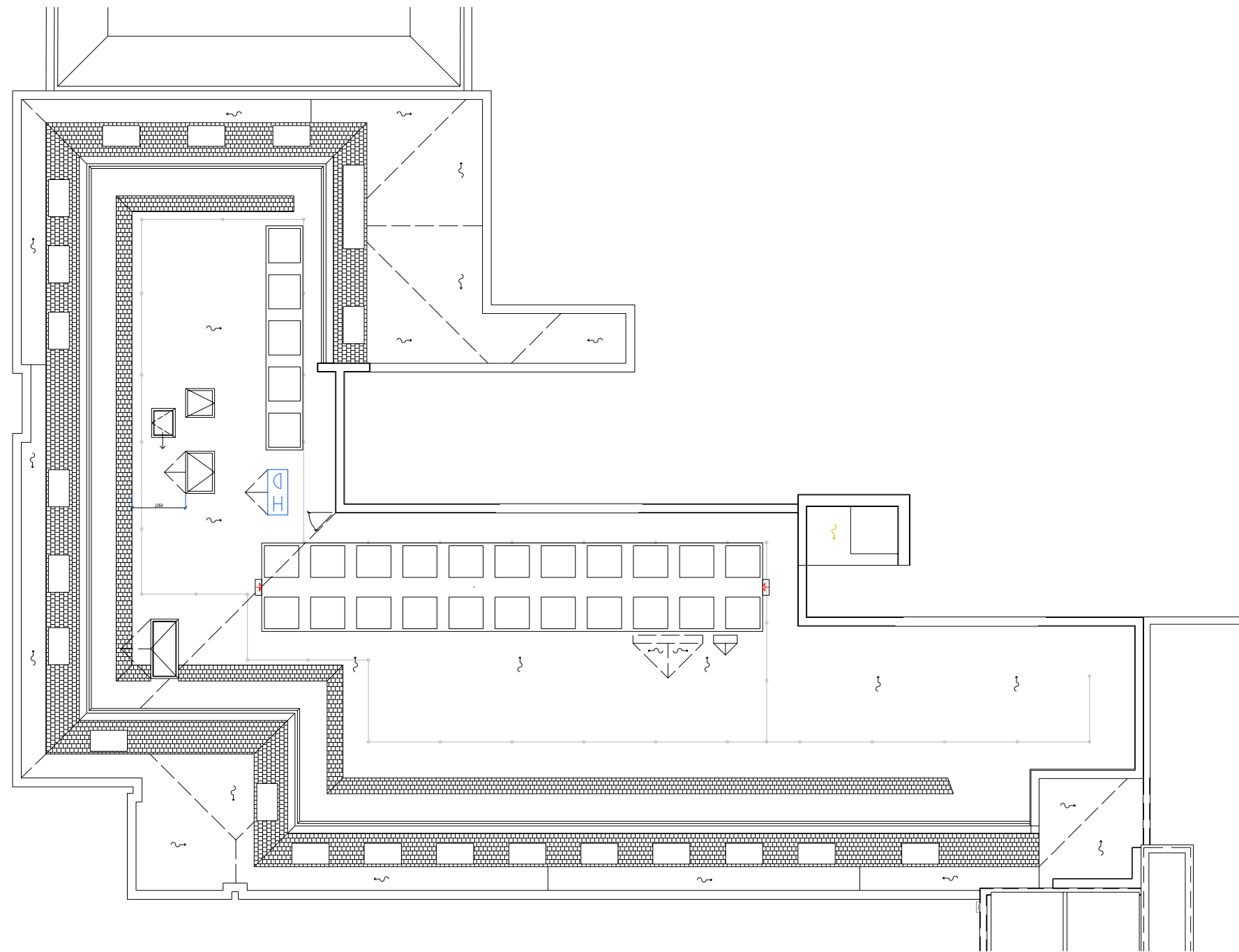


Layout as approved through application reference number 6/2018/1057/FULL

Drawing No. A-164-p4



**01** Approved Roof Plan

1:200@A3

**PAPA** Papa Architects Ltd.  
222 Archway Road, Highgate,  
London N6 5AX  
Phone. +44(0)20 8348 8411  
Fax. +44 (0)20 8348 7411  
www.papaarchitects.co.uk

Client

Address  
**1-7 Fountain House  
Howardsgate  
AL8 6AL**

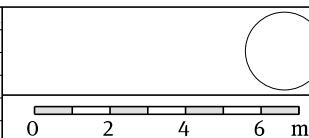
Drawing title  
**Approved Roof Plan**

Project No. Date  
**1815 Oct'18**

Scale  
**1:200 @ A3**

Rev	Date	Reason For Issue	Chk
P01	28.11.18	S73 Application	AC

Drawing No. Current Rev  
**10-206 P01**



**Notes**  
All dimensions must be checked and Papa Architects are to be informed of any discrepancies prior to construction. Any DWG's issued by PAPA architects are to be read in conjunction with the associated PDF versions. This drawing and any of the details therein remain the copyright of Papa Architects Ltd. All drawings prepared by Papa Architects are not to be used for any submissions, area schedule calculations or used by any other Persons or Companies other than Papa Architects Ltd unless written consent has been given by Papa Architects Ltd.