



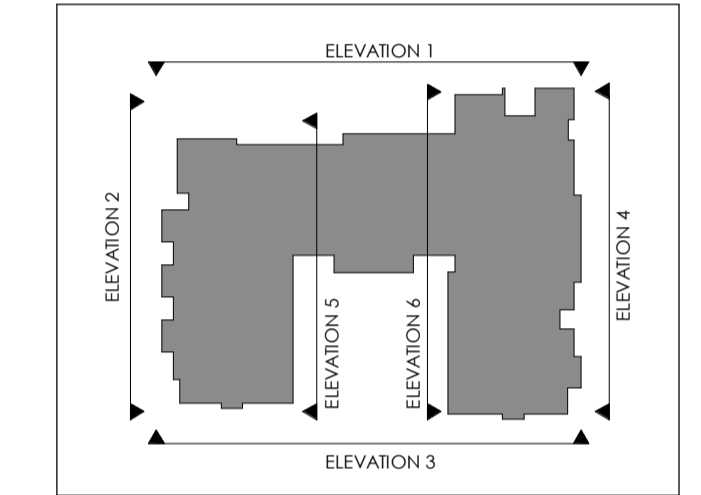


- Materials Prohibited**
- Materials prohibited from use, except where used in accordance with 'Good Practice in the Selection of Construction Materials (March 2017)' or unless required by the Contract:
- high alumina cement in the structural elements;
 - wood wool slabs in permanent formwork to concrete;
 - calcium chloride admixtures for use in reinforced concrete;
 - asbestos or asbestos-containing products, as defined in the 'Control of Asbestos at Work Regulations, as amended 2012' or any other statutory modification or re-enactment thereof;
 - any naturally occurring or man made mineral fibres (for example, rock-wool or slag wool) with a thickness of 3 microns or less and a length of 200 microns or less, unless they are appropriately sealed to prevent migration of fibres;
 - aggregates for use in reinforced concrete which do not comply with BS EN 12620:2002 properties of aggregates used in concrete BS EN 12620:2002 Properties of aggregates used in mortar BS EN 15055 (Parts 1 & 2) properties of lightweight aggregates. 'Substance avoiding alkali-silica reaction and limitations on alkali content in BRE Digest 330 (2004)' & 'Concrete Society Technical Report 30 (1999)';
 - lead, lead paint or any other materials containing lead which may be ingested, inhaled or absorbed, except where copper alloy fittings also containing lead are specifically required in drinking water pipework by any relevant statutory requirement or where lead flashings or other lead roof coverings are specifically provided for in the Contract; urea formaldehyde foam or materials which may release formaldehyde in quantities which may be hazardous with reference to the limits set by the Health and Safety Executive;
 - calcium silicate bricks or tiles;
 - vermiculite unless it is established as being fibre-free; calcium silicate bricks or tiles;
 - any products containing cadmium referred to in Statutory Instrument SI 2006/3311 Control of dangerous substances and preparations Regulations 2006. Reference should also be made to HSE IDG6391 Cadmium and you;
 - any new timber treated with pentachlorophenol;
 - non galvanized mild steel structural fixings for building elements particularly susceptible to erosion;
 - concrete used in circumstances where it is susceptible to alkali/silica reaction;
 - materials containing chlorofluorocarbons (CFCs);
 - solvent based paints where water based paints are unsuitable for unavailability; any new materials not in accordance with statutory requirements, British Standards, Codes of Practice and good building practice current at the date of incorporation of the relevant materials into the works or the specifications thereof;

NOTES:

- Scheme subject to design development, detailed Site Surveys and relevant Statutory Approvals.

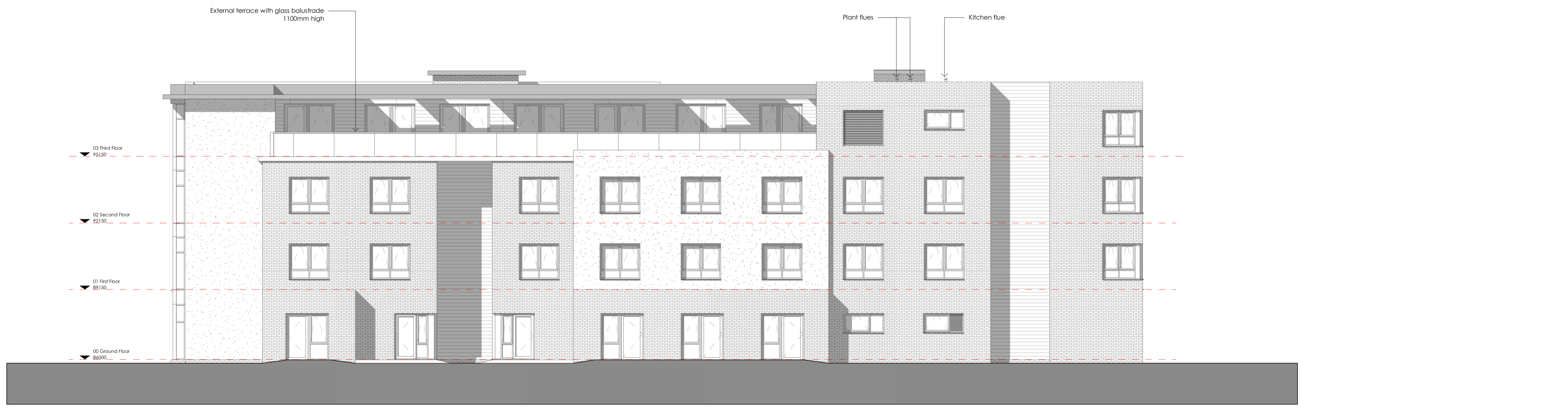
- KEY MATERIALS**
-  Main facing brick
 -  Render
 -  Bronze coloured horizontal cladding
 -  Grey fascia



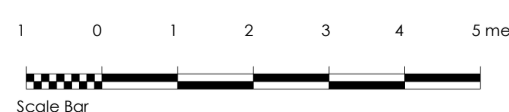
KEY PLAN - SCALE 1:1000



ELEVATION 3 - SOUTH



ELEVATION 4 - EAST



ELEVATIONS - SHEET 2
Scale 1:100 @ A1

NON-MATERIAL AMENDMENT APPLICATION

Revision	Description	MP	Date
D	Windows to Plant Room amended.	MP	01.10.2021
C	West facing bay roof level raised.	MP	24.08.2021
B	Revised as per Client's comments.	MP	06.04.2021
A	'Do Not Scale' notation omitted.	MP	17.01.2019
*	First Issue	MP	20.12.2018



Client
 Marbrook

Project
 Broadwater Road
 Welwyn Garden City, AL7 3AX

Title
 Elevations - Sheet 2

Scale	Date	Drawn By
As indicated @ A1	17.08.2018	MP

Drawing No	Revision
17-152-151	D

Unit 17 Connect Business Village
 24 Derby Road
 Liverpool L5 9PR

0151 207 4371
 info@condylofthouse.co.uk
 www.condylofthouse.co.uk