

Notes
 © This drawing is copyright of Condy and Lofthouse Ltd. and may not be reproduced in any way without their specific permission.

Materials Prohibited

- Materials prohibited from use, except where used in accordance with 'Good Practice in the Selection of Construction Materials (March 2017)' or unless required by the Contract:
- High alumina cement in the structural elements;
 - wood wool slabs in permanent formwork to concrete;
 - calcium chloride admixtures for use in reinforced concrete;
 - asbestos or asbestos-containing products, as defined in the 'Control of Asbestos at Work Regulations, as amended 2012' or any other statutory modification or re-enactment thereof;
 - any naturally occurring or man made mineral fibres (for example, rock-wool or slag wool) with a thickness of 3 microns or less and a length of 200 microns or less, unless they are appropriately sealed to prevent migration of fibres;
 - aggregates for use in reinforced concrete which do not comply with:
 BS EN 12620:2002 properties of aggregates used in concrete
 BS EN 12620:2002 Properties of aggregates used in mortar
 BS EN 12620:2002 (Parts 1 & 2) properties of lightweight aggregates
 'Guidance on avoiding alkali-silica reaction and limitations on alkali content in BRE Digest 330 (2004)' & 'Concrete Society Technical Report 30 (1999)';
 - lead, lead paint or any other materials containing lead which may be ingested, inhaled or absorbed, except where copper alloy fittings also containing lead are specifically required in drinking water pipework by any relevant statutory requirement or where lead flashings or other lead roof coverings are specifically provided for in the Contract; urea formaldehyde foam or materials which may release formaldehyde in quantities which may be hazardous with reference to the limits set by the Health and Safety Executive;
 - calcium silicate bricks or tiles;
 - vermiculite unless it is established as being fibre-free; calcium silicate bricks or tiles; any products containing cadmium referred to in Statutory Instrument SI 2006/3311
 Controls on dangerous substances and preparation Regulations 2006. Reference should also be made to HSE IDG391 Cadmium and you;
 - any new timber treated with pentachlorophenol;
 - non galvanised mild steel structural fixings for building elements particularly susceptible to erosion;
 - concrete used in circumstances where it is susceptible to alkali/silica reaction;
 - materials containing chlorofluorocarbons (CFC's);
 - solvent based paints except where water based paints are unavailable for unavailability;
 - any new materials not in accordance with statutory requirements, British Standards, Codes of Practice and good building practice current at the date of incorporation of the relevant materials into the works or the specifications thereof.

NOTES

- Scheme design subject to relevant Statutory Approvals.
- Scheme to be read in conjunction with elevation drawings and site plan.
- Scheme layout as instructed by Client.

KEY

- E/S En-Suite
- N/S Nurse's Station
- AWC Assisted WC
- KF Kitchen Flue

ACCOMMODATION

GIA	1313m ²
-----	--------------------

UNIT 7 - 13 CARE SUITE UNIT

Dayspace	6m ² /Suite
----------	------------------------

NON-MATERIAL AMENDMENT APPLICATION

G	Revised as per Client's comments.	MP	06.04.2021
F	Care Suites layout added.	MP	06.08.2019
E	Minor revisions.	MP	01.08.2019
D	Minor revisions.	MP	29.07.2019
C	1. Balcony to Suite 11 redesigned as agreed with Planning on 16.05.2019. 2. Third Floor GIA increased by 5m ² .	MP	17.06.2019
B	3No. external terraces omitted	MP	15.05.2019
A	'Do Not Scale' notation omitted.	MP	17.01.2019
*	First Issue	MP	20.12.2018



Client
Marbrook

Project
Broadwater Road
Welwyn Garden City, AL7 3AX

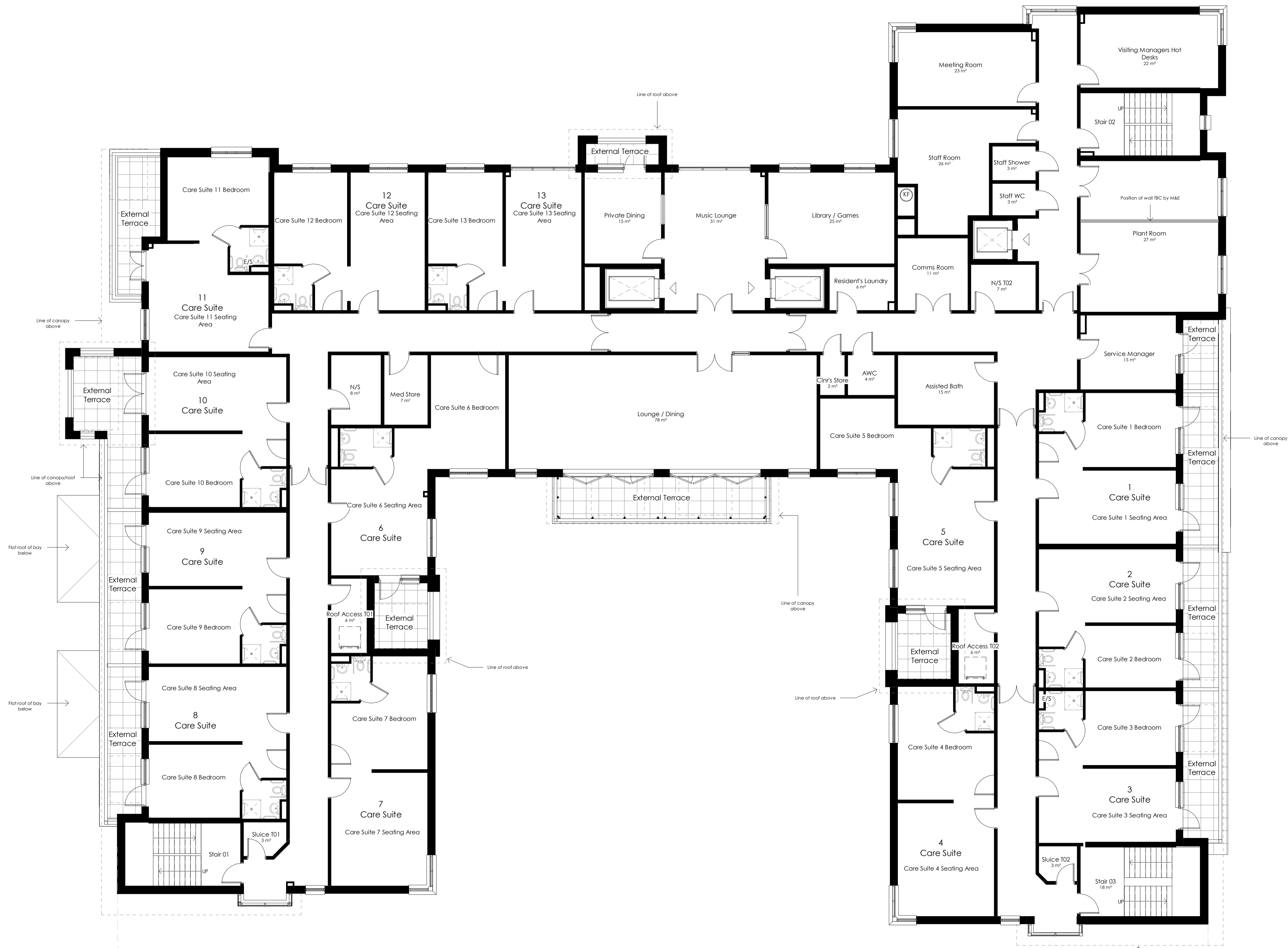
Title
Third Floor Plan - As Proposed

Scale	Date	Drawn By
1:100@A1	03.08.2018	MP

Drawing No	Revision
17-132-123	G

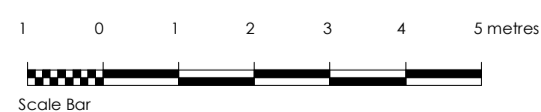
Unit 17 Connect Business Village
24 Derby Road
Liverpool L5 9PR

0151 207 4371
info@condylofthouse.co.uk
www.condylofthouse.co.uk



UNIT 7

13 Care Suite Unit



THIRD FLOOR PLAN - AS PROPOSED
Scale 1:100 @ A1