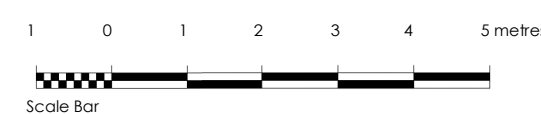


ELEVATION 5 - EAST SECTIONAL



ELEVATION 6 - WEST SECTIONAL



ELEVATIONS - AS PROPOSED - SHEET 3

NOTES

- Ⓒ This drawing is copyright of Candy and Lofthouse Ltd. and may not be reproduced in any way without their specific permission.
- Ⓓ This drawing has been prepared based upon a digital survey undertaken to XXXX, 16/08/2018 10:00.

MATERIALS PROHIBITED

Materials prohibited from use, except where used in accordance with 'good practice in the selection of construction materials (2012)' or unless required by the Contract:

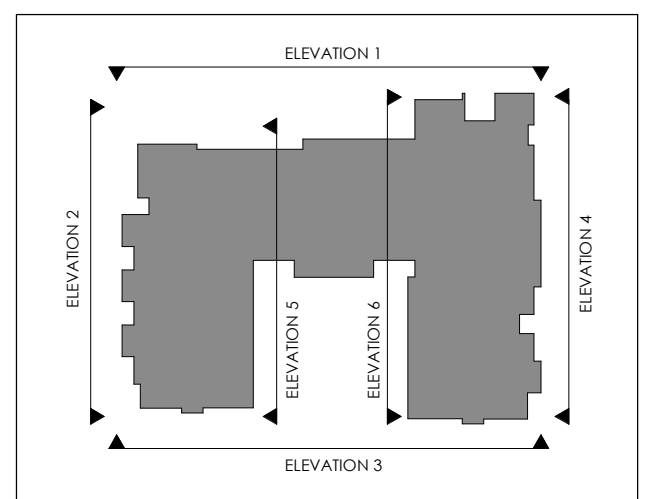
- a. high chlorine content in the structural elements;
- b. wood wool slabs in permanent formwork to concrete;
- c. calcium chloride admixtures for use in reinforced concrete;
- d. asbestos or asbestos-containing products, as defined in the Control of Asbestos at Work Regulations, 1987 or any other statutory modification or re-enactment thereof;
- e. any naturally occurring or man-made mineral fibres (for example, rock wool or slag wool) with a thickness of 3 microns or less and a length of 200 microns or less, unless they are appropriately sealed to prevent migration of fibres;
- f. aggregates for use in reinforced concrete which do not comply with British Standard BS 1188 and/or aggregates for use in concrete which do not comply with British Standard BS 1188;
- g. lead: lead paint or any other materials containing lead which may be ingested, inhaled or absorbed except where copper alloy fittings also containing lead are specifically required in drinking water pipework by any relevant statutory requirement or where lead flashings or other lead roof coverings are specifically provided for in the Contract;
- h. urea formaldehyde foam or materials which may release formaldehyde in quantities which may be hazardous with reference to the limits set by the Health and Safety Executive;
- i. calcium silicate bricks or tiles;
- j. vermiculite unless it is established as being fibre-free: calcium silicate bricks or tiles;
- k. any of the products containing cadmium that are referred to in the Environmental Protection (Control of Hazardous Substances) (No.2) Regulations 1993;
- l. any new finish treated with perfluoropolymer;
- m. non-galvanised mild steel structural fixings for building elements particularly susceptible to erosion;
- n. concrete used in circumstances where it is susceptible to alkali/silica reaction;
- o. materials containing chlorofluorocarbons (CFC's);
- p. solvent based paints except where water based paints are unsuitable for availability;
- q. any new materials not in accordance with statutory requirements, British Standards, Codes of Practice and good building practice current at the date of incorporation of the relevant materials into the Works or the specifications thereof;

NOTES

1. Scheme design subject to detailed Site Surveys and relevant Statutory Approvals.
2. Scheme to be read in conjunction with floor plan drawings and site plan.
3. All materials and finishes to be approved by the local Planning Authority.
4. Generally windows to be uPVC with external colour finish, except to the following aluminium framed arrangements:
 - Main entrance sliding doors
 - Large scale window arrangements
5. All bedroom en-suites and inner rooms to be ventilated by mechanical extract grille (wall mounted at Ground, First & Second Floor and roof mounted at Third Floor). Grilles to be colour matched to external finishes. Locations TBC.
6. Services and plant flues indicative.

KEY MATERIALS

- Main facing brick
- Render
- Bronze coloured horizontal cladding
- Grey fascia



KEY PLAN - SCALE 1:1000

PLANNING APPLICATION

A 'Do Not Scale' notation 17.01.2019 MP omitted.

* First Issue 20.12.2018 MP

REVISION DETAILS date / name

- Preliminary
- For Approval
- Tender
- Construction

CLIENT
Marbrook

PROJECT
Broadwater Road
Welwyn Garden City
AL7 3AX

DRAWING TITLE
Elevations - As Proposed - Sheet 3

SCALE drawn by date
1:100 @ A1 MP 17.08.2018

DRAWING NO revision
17-132-152 (A)



T: 0151 207 4371 • F: 0151 207 7087