

**NOTES**

- Ⓒ This drawing is copyright of Candy and Lofthouse Ltd. and may not be reproduced in any way without their specific permission.
- Ⓓ This drawing has been prepared based upon a digital survey undertaken by XXXX, 16/03/2018 10:00:00.

**MATERIALS PROHIBITED**

- Materials prohibited from use, except where used in accordance with 'good practice in the selection of construction materials (2012)' or unless required by the Contract:
- a. high alumina cement in the structural elements;
  - b. wood wool slabs in permanent formwork to concrete;
  - c. calcium chloride admixtures for use in reinforced concrete;
  - d. asbestos or asbestos-containing products, as defined in the Control of Asbestos at Work Regulations, 1987 or any other statutory modification or re-enactment thereof;
  - e. any naturally occurring or man made mineral fibres (for example, rock wool or slag wool) with a thickness of 3 microns or less and a length of 200 microns or less, unless they are appropriately sealed to prevent migration of fibres;
  - f. aggregates for use in reinforced concrete which do not comply with British Standard BS 882:1983 and/or aggregates for use in concrete which do not comply with British Standard 8110:1985;
  - g. lead: lead paint or any other materials containing lead which may be ingested, inhaled or absorbed except where copper alloy fittings also containing lead are specifically required in drinking water pipework by any relevant statutory requirement or where lead flashings or other lead roof coverings are specifically provided for in the Contract;
  - h. urea formaldehyde foam or materials which may release formaldehyde in quantities which may be hazardous with reference to the limits set by the Health and Safety Executive;
  - i. calcium silicate bricks or tiles;
  - j. vermiculite unless it is established as being fibre-free: calcium silicate bricks or tiles;
  - k. any of the products containing cadmium that are referred to in the Environmental Protection (Control of Hazardous Substances) (No.2) Regulations 1993;
  - l. any new finishes treated with pentachlorophenol;
  - m. non galvanised mild steel structural fixings for building elements particularly susceptible to erosion;
  - n. concrete used in circumstances where it is susceptible to alkali/silica reaction;
  - o. materials containing chlorofluorocarbons (CFC's);
  - p. solvent based paints except where water based paints are unsuitable for use;
  - q. any new materials not in accordance with statutory requirements, British Standards, Codes of Practice and good building practice current of the date of incorporation of the relevant materials into the Works or the specifications thereof.

**NOTES**

1. Scheme design subject to detailed Site Surveys and relevant Statutory Approvals.
2. Scheme to be read in conjunction with elevation drawings and site plan.
3. Scheme layout as instructed by Client.

**KEY**

- E/S En-Suite
- N/S Nurse's Station
- AWC Assisted WC
- KF Kitchen Flue

**ACCOMMODATION**

TF GIA	1306m <sup>2</sup>
<b>UNIT 7 - 13 SUITE UNIT</b>	
Dayspace	6.1m <sup>2</sup> /Suite

**PLANNING APPLICATION**

A	'Do Not Scale' notation omitted.	17.01.2019	MP
*	First Issue	20.12.2018	MP

**REVISION DETAILS**

- Preliminary
- For Approval
- Tender
- Construction

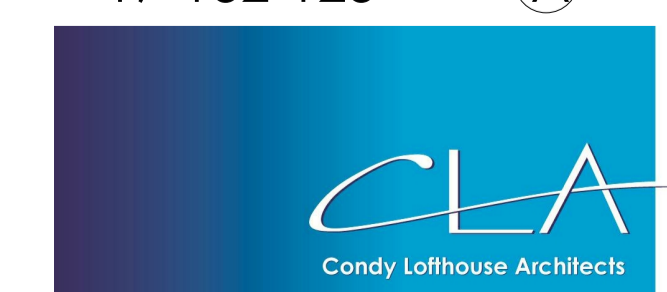
**CLIENT**  
Marbrook

**PROJECT**  
Broadwater Road  
Welwyn Garden City  
AL7 3AX

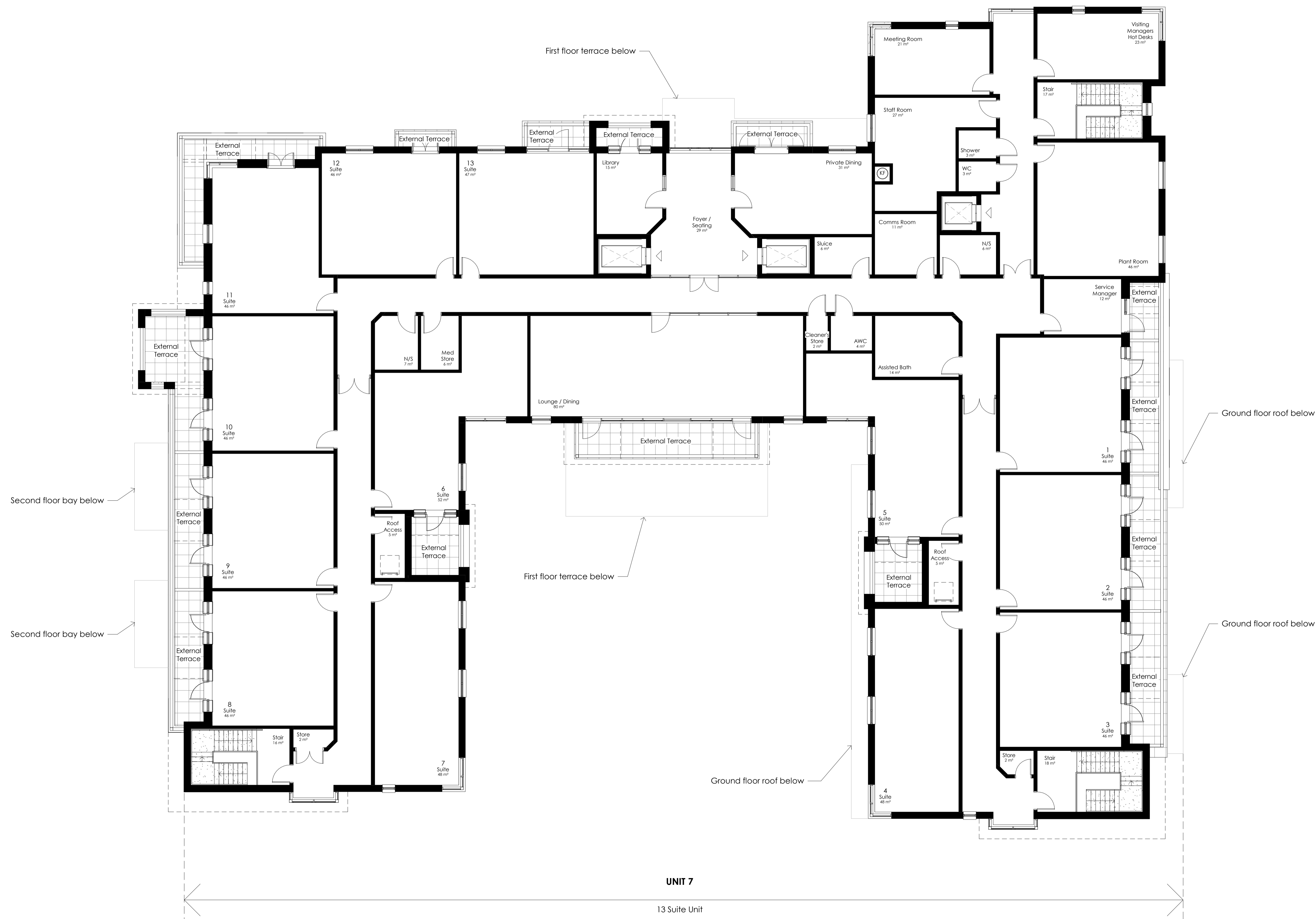
**DRAWING TITLE**  
Third Floor Plan - As Proposed

**SCALE** drawn by date  
1 : 100 @A1 MP 03.08.2018

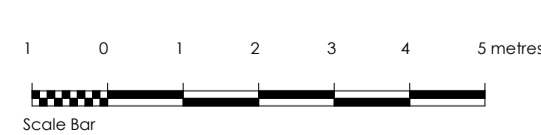
**DRAWING NO** revision  
17-132-123 (A)



T: 0151 207 4371 • F: 0151 207 7087



**UNIT 7**  
13 Suite Unit



**THIRD FLOOR PLAN - AS PROPOSED**

Candy & Lofthouse Ltd Trading as CLA • Unit 17, Connect Business Village • 24 Derby Road • Liverpool • L5 9PR • E: info@condyllofthouse.co.uk • www.condyllofthouse.co.uk