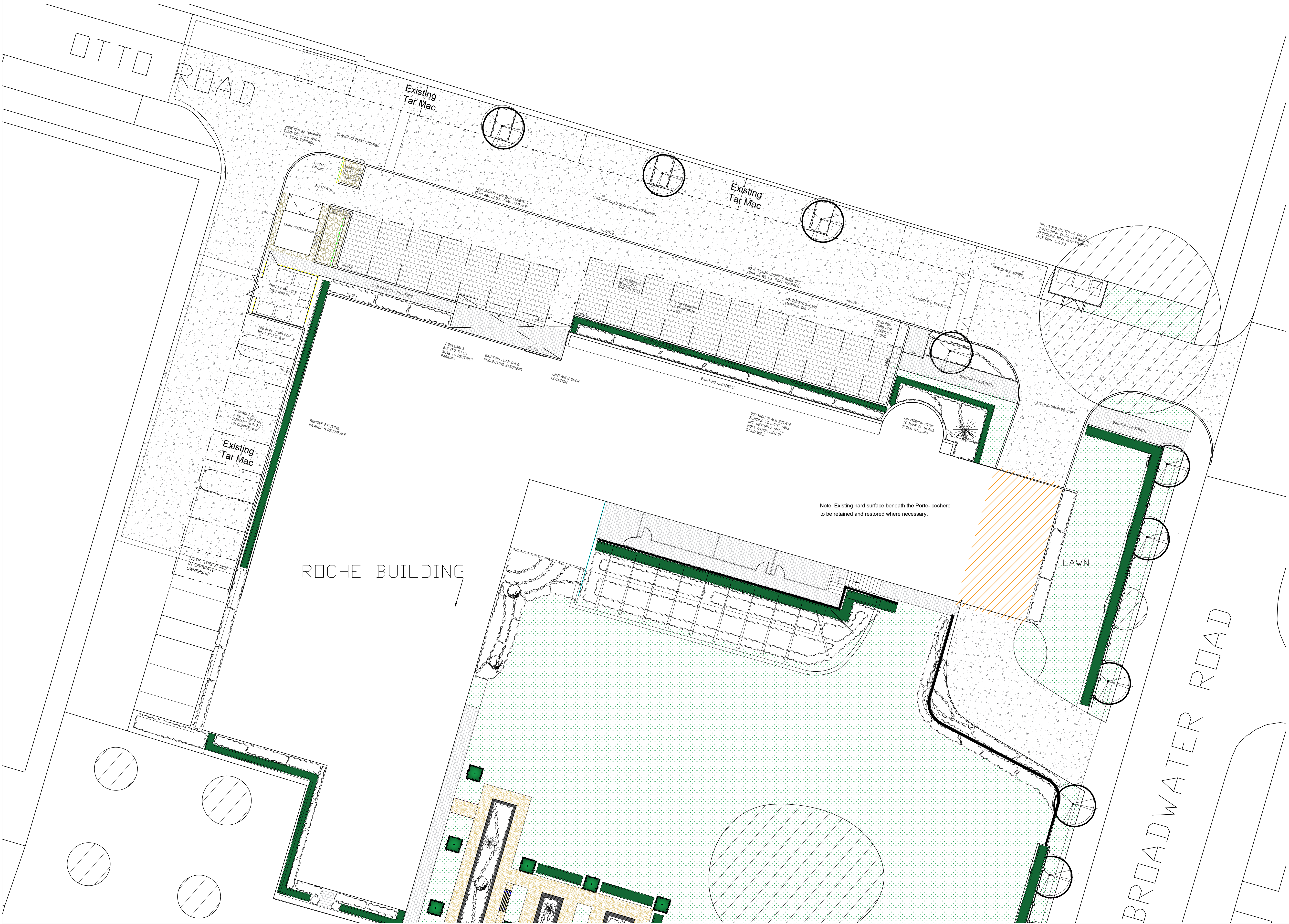




- Key:
- Tarmacadam to primary roads
 - Tobermore Tegula Block Paving - Charcoal or similar approved. Located on parking bays (240 x 160 x 80mm)
 - Tobermore Braemar Alto Paving - Silver Ground or similar approved. Located on pavements (600 x 300 x 60mm)
 - Existing Fence retained
 - Barley Beach Sureset Resin Bound Gravel with an aggregate size of 6mm or similar approved, fine grit cast onto lightly cured surface. Located on Footpaths
 - 20mm Golden Gravel or Similar
 - 0.5m Raised Blockwork planter rendered to match built form.
 - 1.1m high frameless glass balustrade as edge protection (see engineers details)
 - Retaining wall (see engineers details)

Note: Existing hard surface beneath the Porte- cochere to be retained and restored where necessary.



REV	DATE	NOTE	Drawn	Chkd
F	14.9.18	Updated Hard surface spec to Client's comments	CW	CW
E	21.8.18	Updated to new arrangement to northern layout	CW	CW
D	09.7.18	Updated bin store / sub station locations to layout	CW	AM
C	13.2.18	Updated frontage to clients comments	CW	AM
B	16.2.17	Updated to clients comments	CW	AM
A	15.2.17	Updated to clients comments	CW	AM

aspectscape planning

TITLE
Roche Building Welwyn Garden City
Hard Surface Plan 1 of 2

CLIENT

SCALE 1:150@A1	DATE FEB 2017	DRAWN CW	CHK'D AM
DRAWING NUMBER 6004.HSP.4.0	REVISION F		