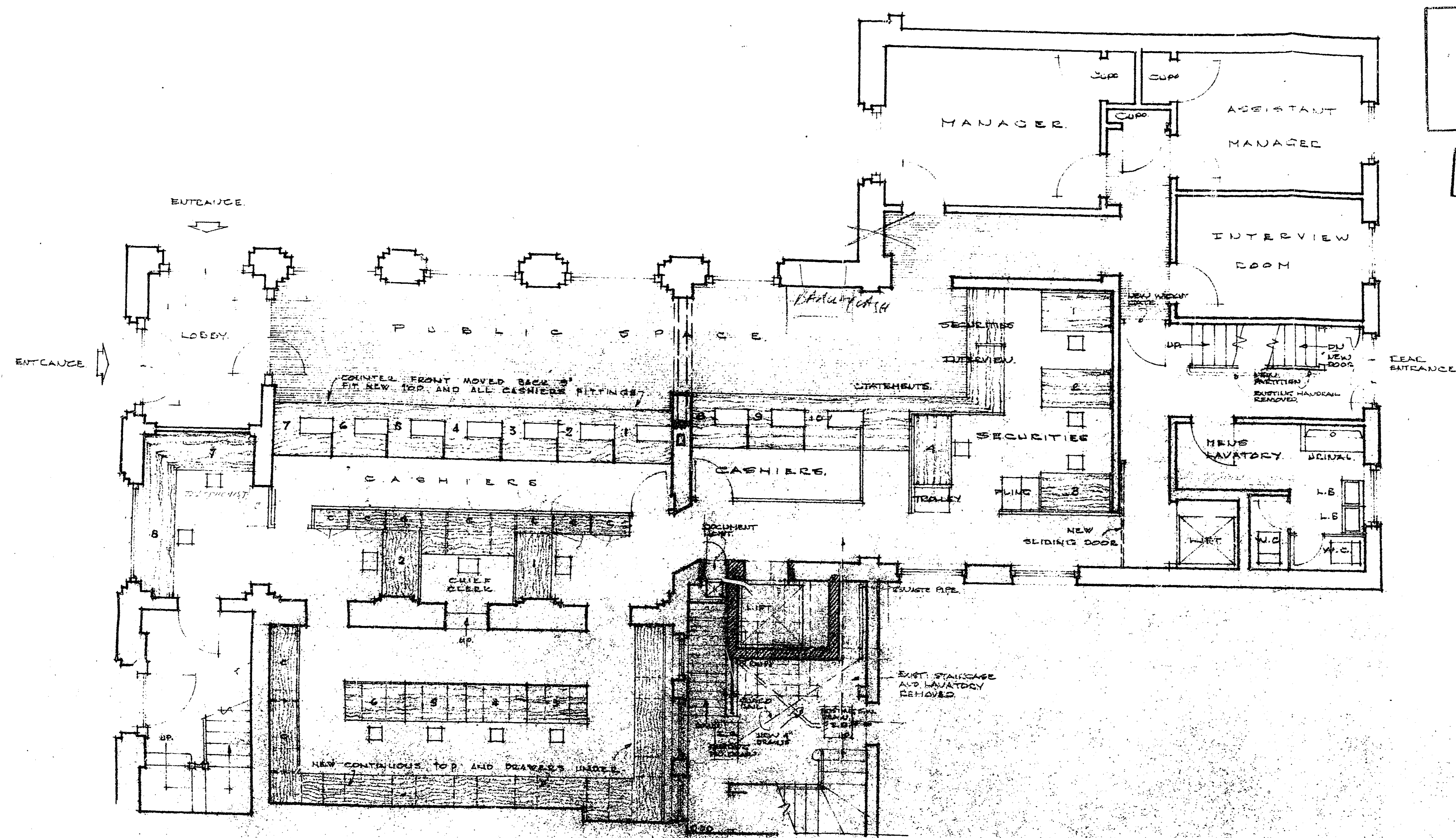


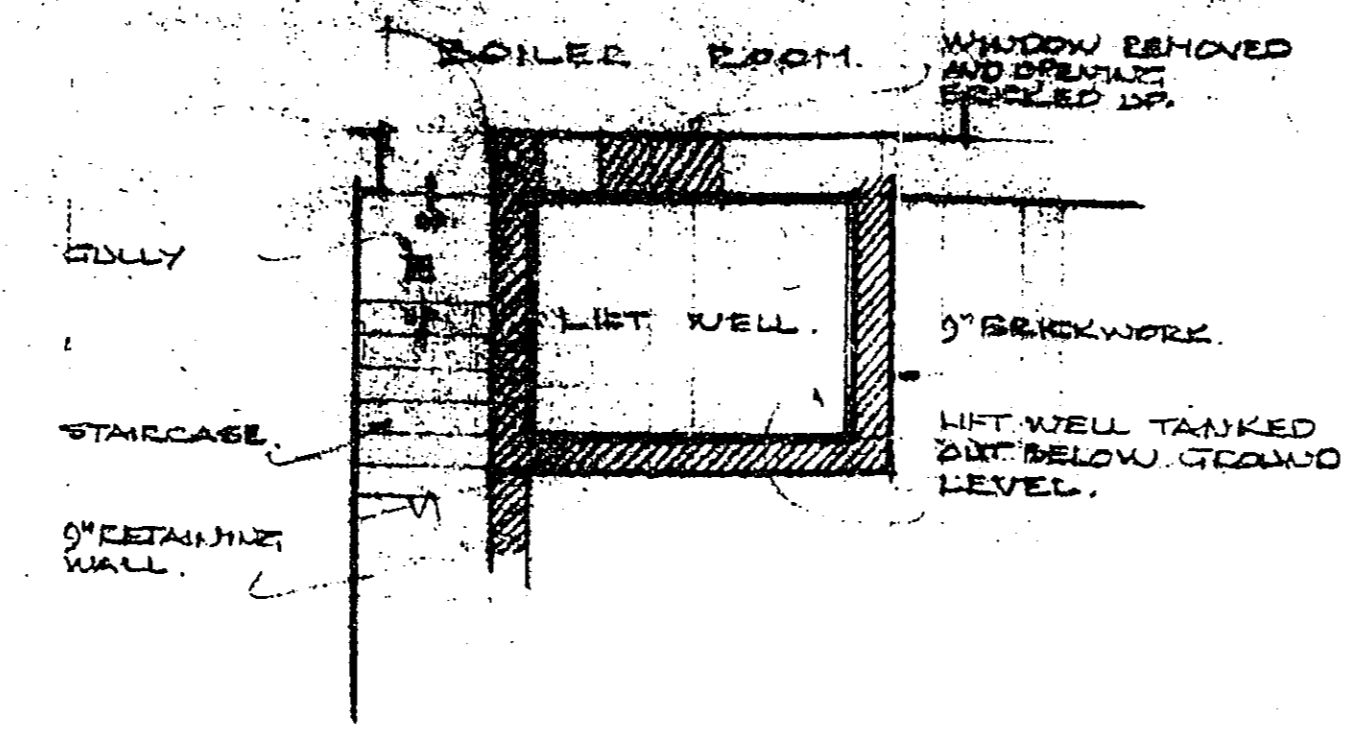
N6/24-81

9 HOWARDSGATE, W.G.C

2/2



GROUND FLOOR PLAN



BASEMENT PLAN

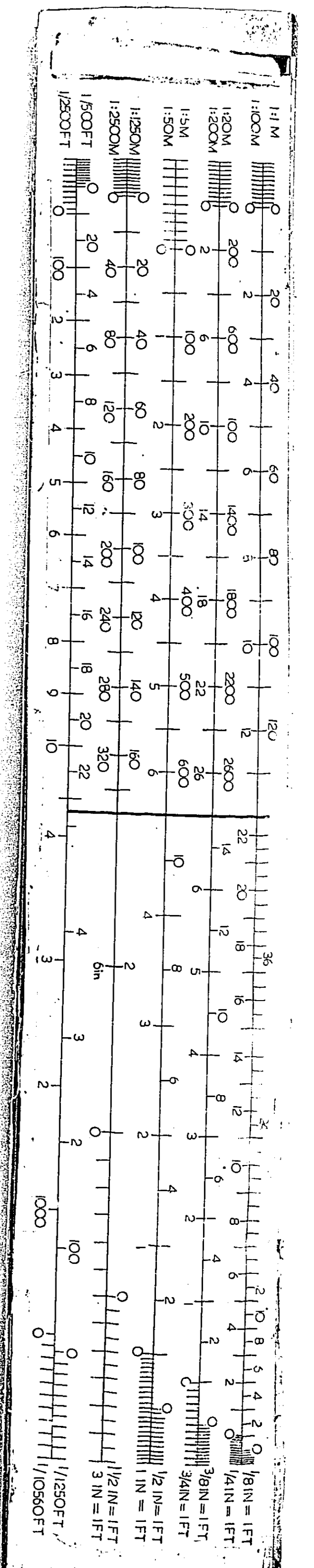
WELWYN HATFIELD D.C.
RECEIVED 15 JAN 1981
6/24/81

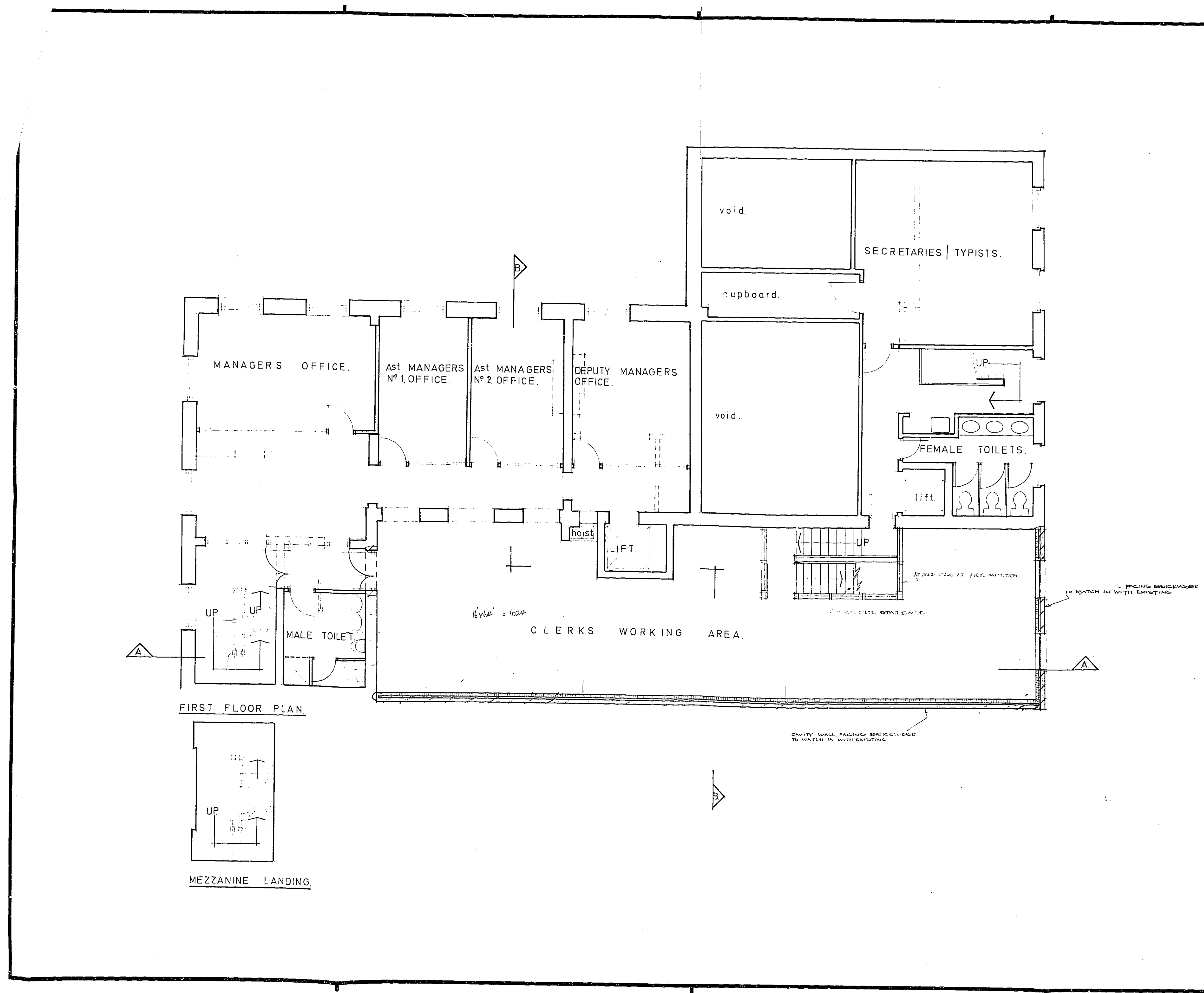
OFFICE COPY

WELWYN HATFIELD D.C.
TOWN & COUNTRY PLANNING DEPT
PLAN REFERRED TO IN COMMISSIONAL
Date 19 MAR 1981

REVISIONS:-
1- 10-3-66. All 5 portion of lift shaft
2- 12-4-66. Draw all. Lift well tanking.

Barclays Bank Limited
Premises Department, City House, 65, Southwark St, S.E.1. WATERLOO RD55.
Project: WELWYN GARDEN CITY HOWARDS RATE PROPOSED ALTERATIONS
Drawing No: 205
Scale: 1/4" = 50' Date: 1981/MAR/19





Notes
 WELWYN HATFIELD D.C.
 RECEIVED 15 JAN 1981
 6/24/81

OFFICE COPY

WELWYN HATFIELD D.C.
 TOWN & COUNTRY PLANNING ACT 1968
 PLANS REFERRED TO IN CONSENT LETTER
 19 MAR 1981

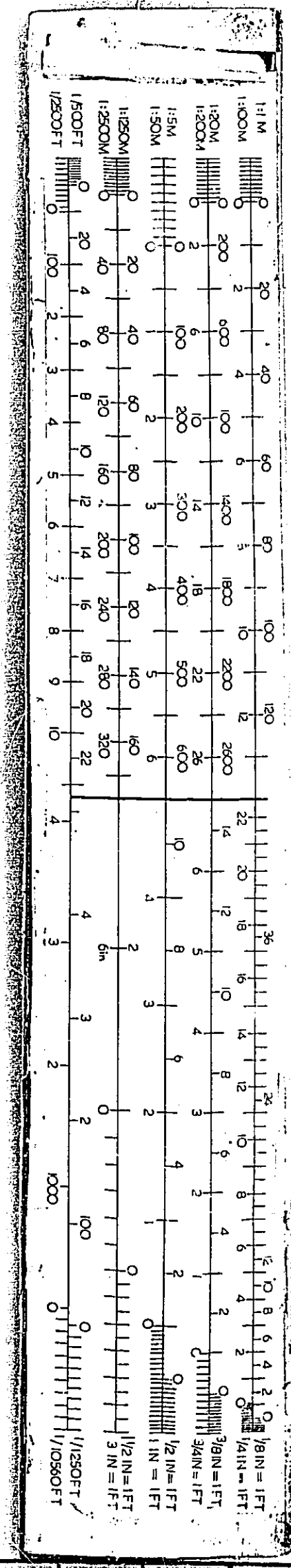
(3) RISE ELEVATION	10/20/81
Amendments	Date by

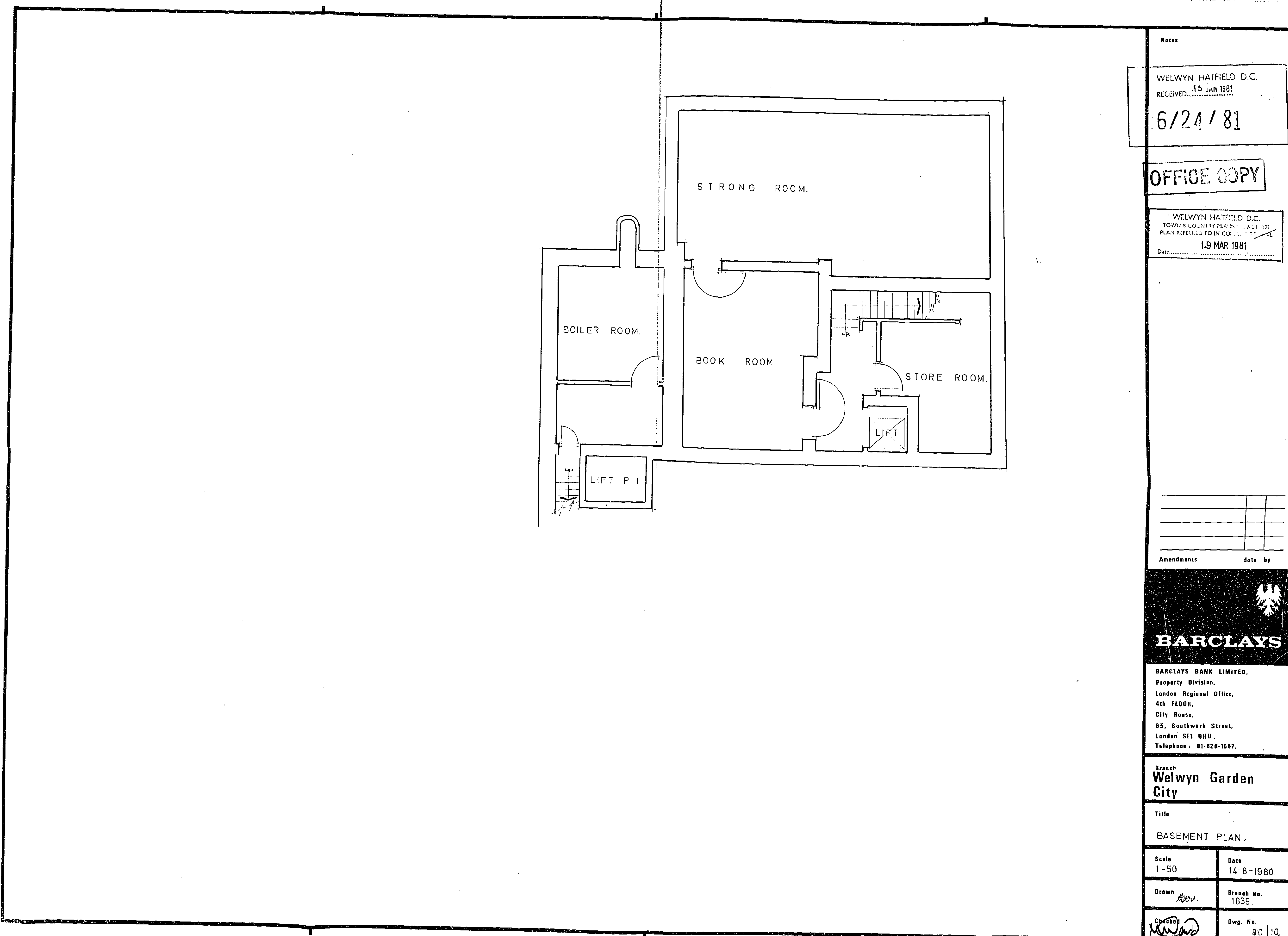
BARCLAYS
 BARCLAYS BANK LIMITED.
 Property Division,
 London Regional Office,
 4th FLOOR,
 City House,
 65, Southwark Street,
 London SE1 0HU,
 Telephone: 01-626-1567.

Branch
Welwyn Garden City

Title
**PROPOSED ALTERATIONS
 FIRST FLOOR.**

Scale 1-50	Date 11-11-1980
Drawn WDM	Branch No. 1835
Checked MJD	Dwg. No. 80 13a





Notes
 WELWYN HAIFIELD D.C.
 RECEIVED 15 JUN 1981
 6/24/81

OFFICE COPY
 WELWYN HAIFIELD D.C.
 TOWN & COUNTRY PLANNING ACT 1971
 PLAN REFERRED TO IN COURT
 Date 19 MAR 1981

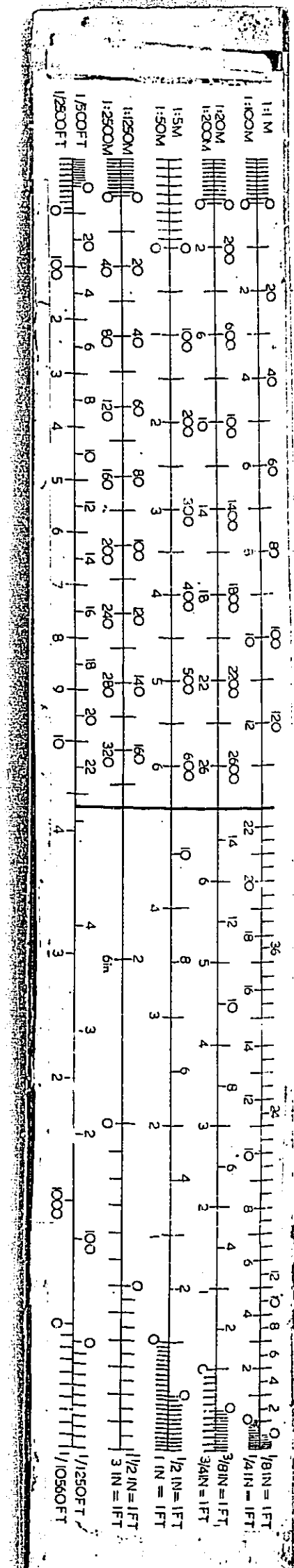
Amendments	date by

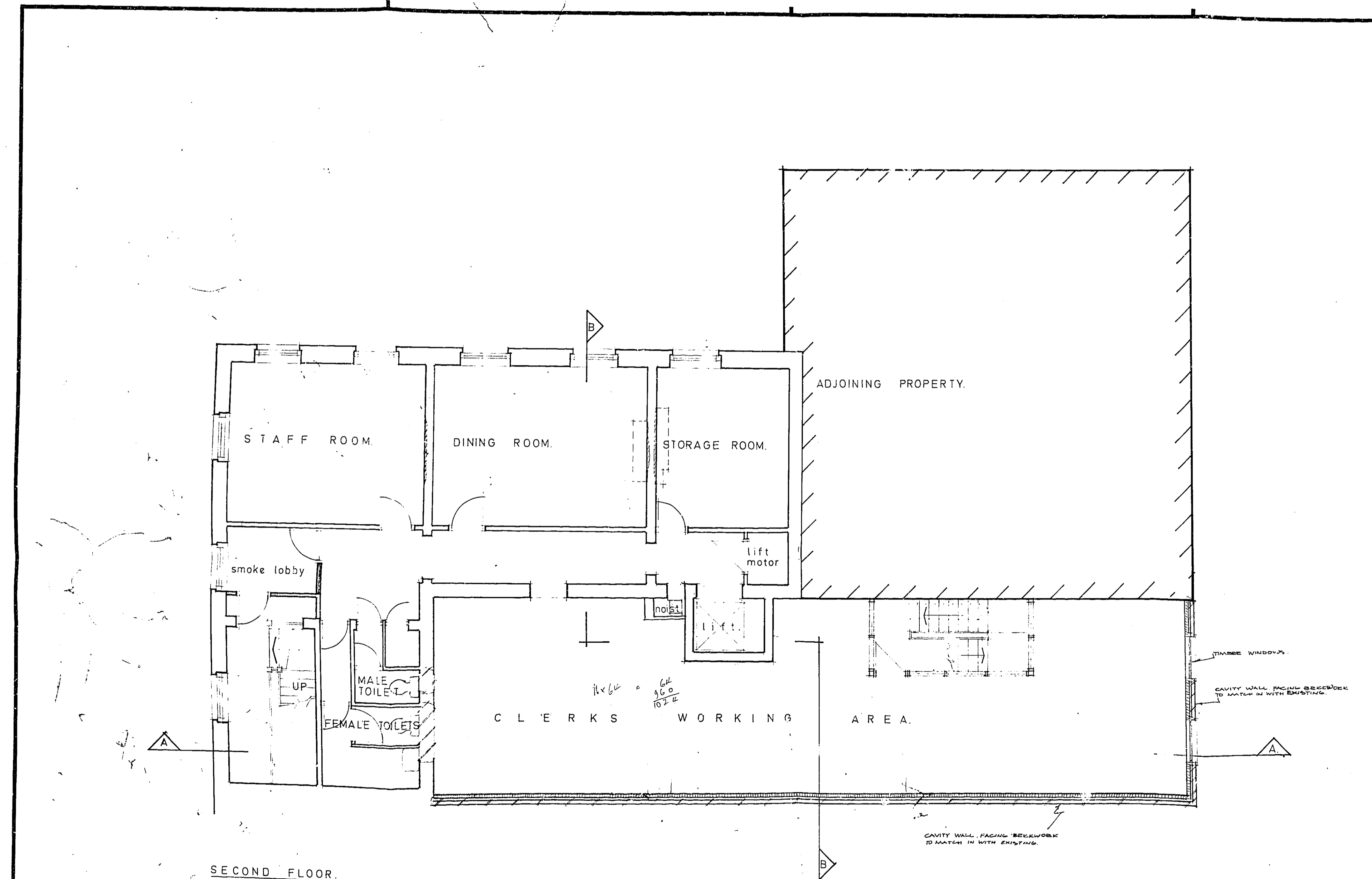
BARCLAYS
 BARCLAYS BANK LIMITED,
 Property Division,
 London Regional Office,
 4th FLOOR,
 City House,
 66, Southwark Street,
 London SE1 0HQ.
 Telephone: 01-628-1567.

Branch
Welwyn Garden City

Title
BASEMENT PLAN

Scale 1-50	Date 14-8-1980
Drawn A.P.	Branch No. 1835
Dwg. No. 80/10	





SECOND FLOOR.

Notes
 WELWYN HATFIELD D.C.
 RECEIVED 15 JAN 1981
 16/24/81

OFFICE COPY

WELWYN HATFIELD D.C.
 TOWN & COUNTRY PLANNING ACT 1971
 PLAN REFERRED TO IN COUNTY DEVELOPMENT PLAN
 Date 19 MAR 1981

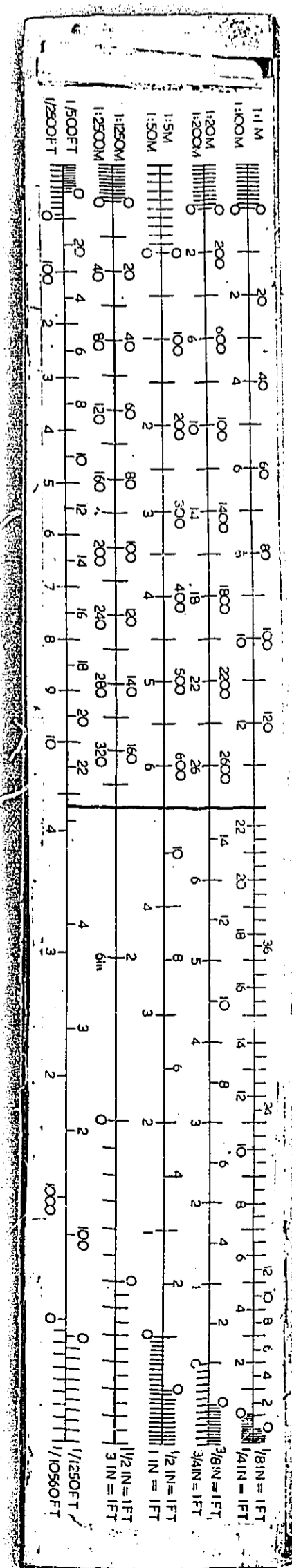
(3) SECOND FLOOR DITCHING AT CORNERS
 Amendments date by

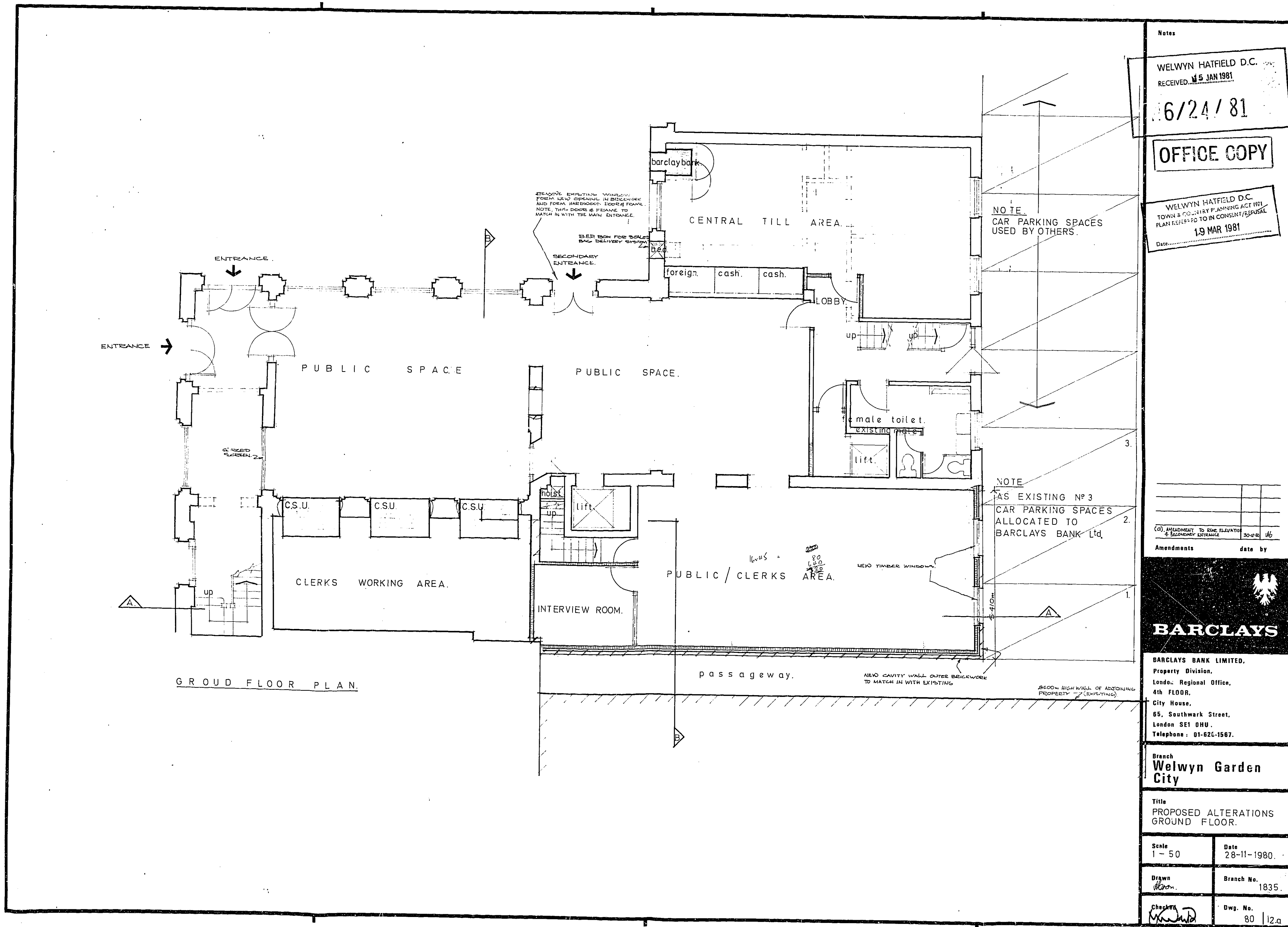
BARCLAYS
 BARCLAYS BANK LIMITED.
 Property Division,
 London Regional Office,
 4th FLOOR,
 City House,
 65, Southwark Street,
 London SE1 8BU.
 Telephone: 01-625-1567.

Branch
Welwyn Garden City

Title
 PROPOSED ALTERATIONS TO
 SECOND FLOOR

Scale	1 - 50	Date	31-11-80.
Drawn	[Signature]	Branch No.	1835.
Checked	[Signature]	Dwg. No.	80/14a.





Notes
 WELWYN HATFIELD D.C.
 RECEIVED 15 JAN 1981
 6/24/81

OFFICE COPY

WELWYN HATFIELD D.C.
 TOWN & COUNTRY PLANNING ACT 1967
 PLANS REFERRED TO IN CONSULTATION
 19 MAR 1981

Amendments	date by



BARCLAYS
 BARCLAYS BANK LIMITED,
 Property Division,
 London: Regional Office,
 4th FLOOR,
 City House,
 65, Southwark Street,
 London SE1 0HU,
 Telephone: 01-621-1587.

Branch
Welwyn Garden City

Title
**PROPOSED ALTERATIONS
 GROUND FLOOR.**

Scale 1 - 50	Date 28-11-1980
Drawn <i>[Signature]</i>	Branch No. 1835
Checked <i>[Signature]</i>	Dwg. No. 80 12.a

