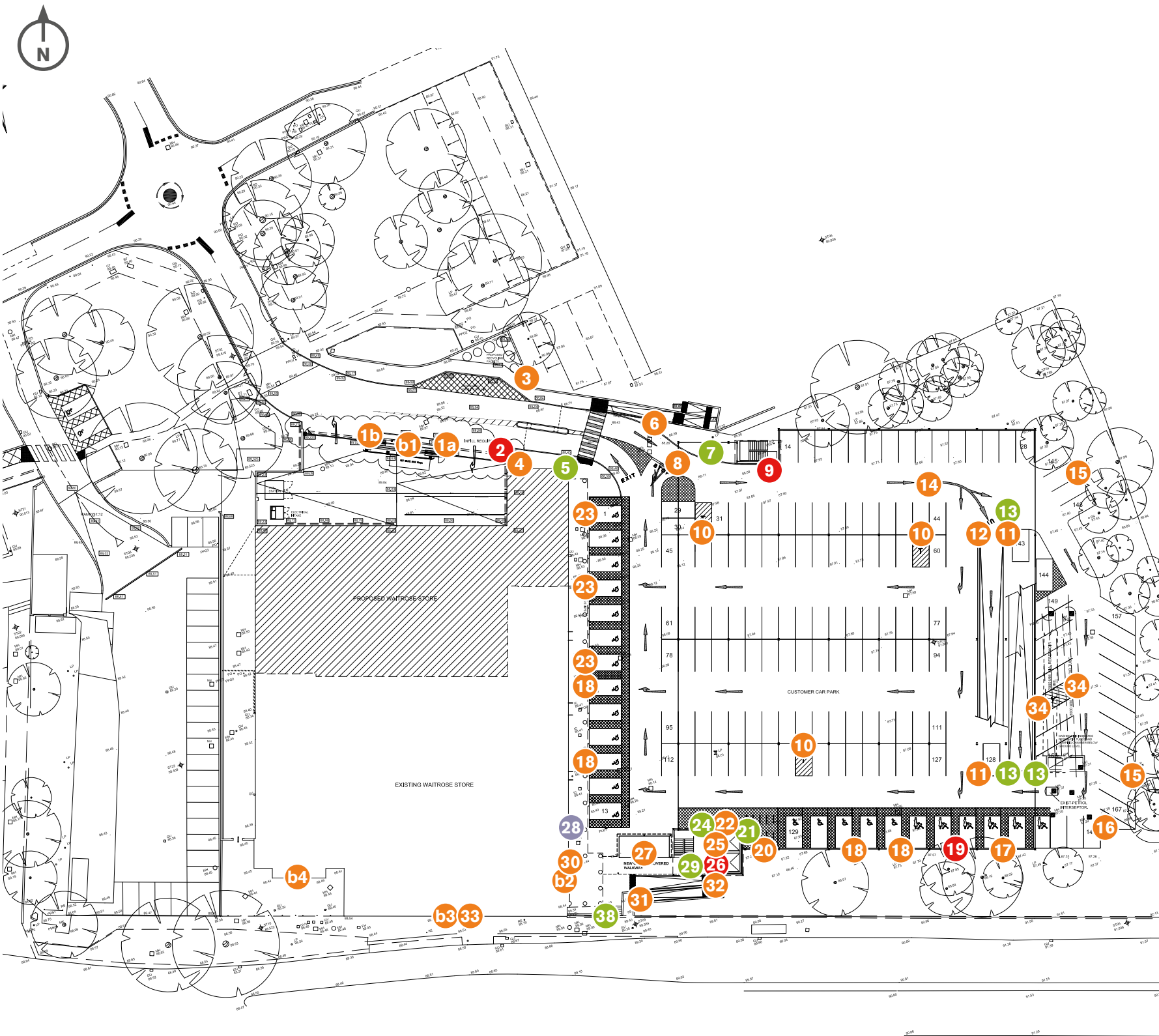




Drawing No. 2b - Car park signage - Ground level




Existing signage to be replaced



Waitrose
Customer entrance



Waitrose
Service vehicles entrance only
Ring bell for attention



Waitrose
Service vehicles exit only

33
Campus/ Waitrose directional
602mm (w) x 935mm (h) wall mounted
Whole sign to be replaced with latest standards.
Qty - 1

1a
Service vehicles entrance only
602mm (w) x 935mm (h) wall mounted
Whole sign to be replaced with latest standards. **"Ring bell message" incorporated - Artwork TBC**
Qty - 1

1b
Service vehicles exit only
602mm (w) x 935mm (h) wall mounted
Whole sign to be replaced with latest standards.
Qty - 1

3
Recycling centre
602mm(w) x 800mm(h) - freestanding
Whole sign to be replaced due to existing sign not being to latest standards as 870mm (w).
Qty - 1

4
Thank you for shopping with us
902mm(w) x 1590mm (h)
Whole sign to be replaced with latest standards.
Qty - 1

6
Shopping hours - car park entrance
902mm(w) x 1590mm(h) - Freestanding
Whole sign to be replaced and brought as far forward as possible. Single sided.
Qty - 1

8
High level Waitrose entrance sign with maximum height and bump bar
Both existing signs to be removed and replaced with internally illuminated lightbox and bump bar. **Landlord permission required. Artwork approval once size has been confirmed by signage contractor**
Qty - 1

10
Trolley cubes
450mm(w) x 450mm(h) - Post mounted
Whole cubes to be replaced as vinyl trolley graphics cannot be removed from cube faces.
Qty - 3 cubes only

11
"Low headroom" sign
528mm(w) x 330mm(h)
Whole sign to be replaced to more formal DFT sign format above car park spaces. **Max height TBC. Sign contractor to supply wheelstop as well.**
Qty - 2