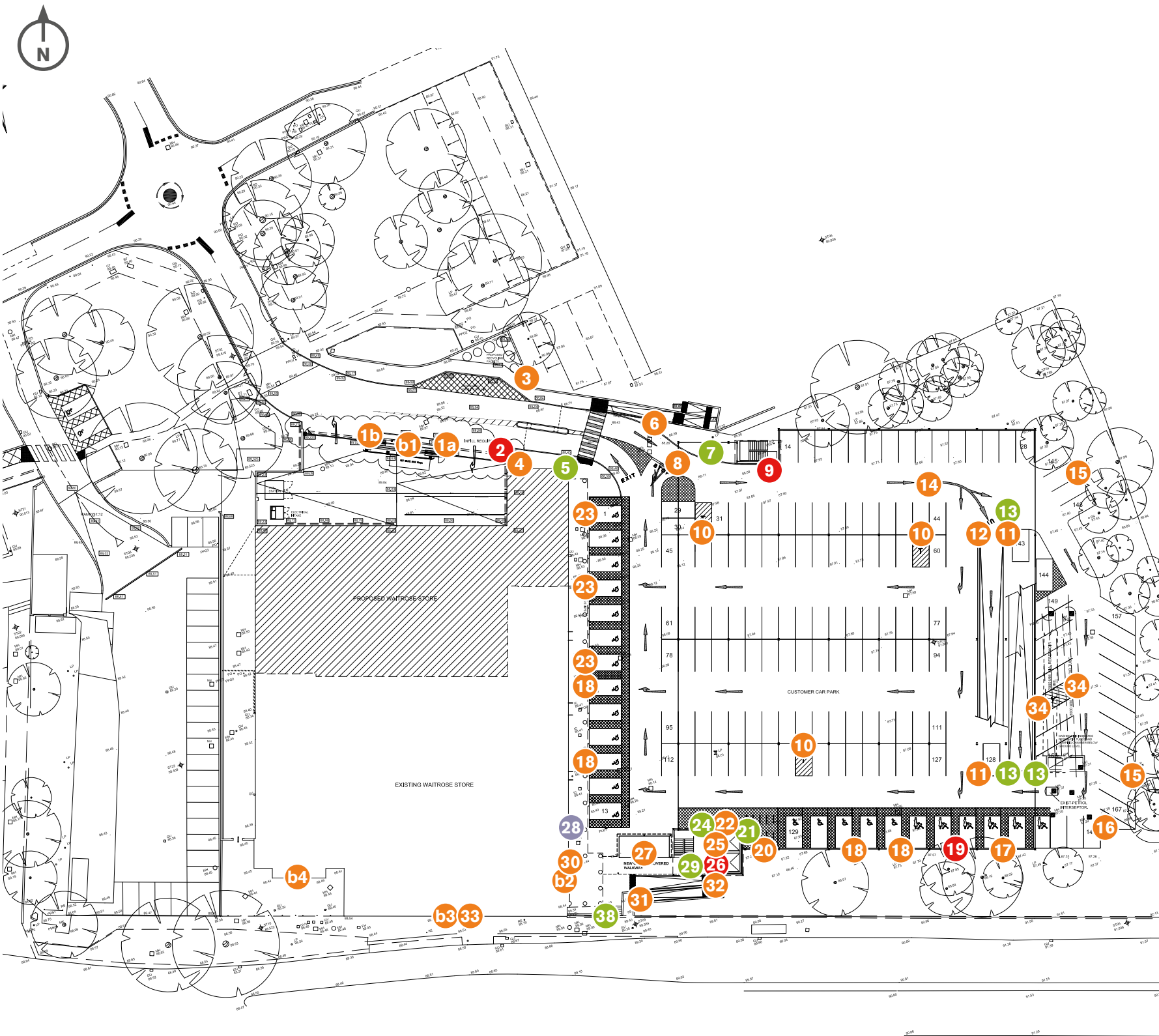


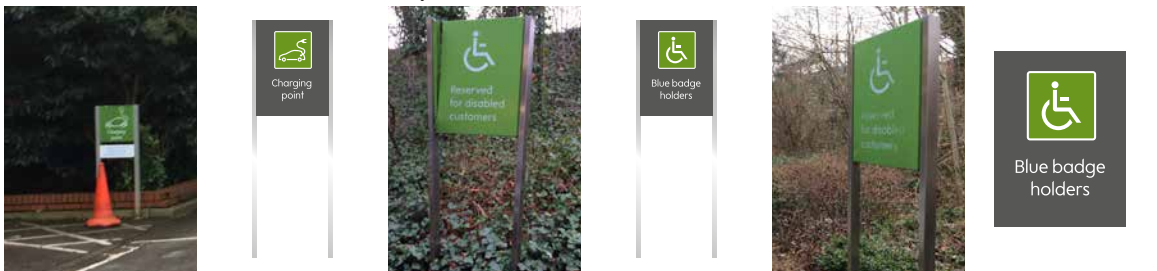
Drawing No. 2c - Car park signage - Ground level



Existing signage to be replaced



- 12 No Pedestrian access - DFT**
250mm (w) - column mounted
Existing panel sign to be replaced with standard DFT circular sign
Qty - 1
- 14 Car park directional**
Whole sign to be replaced with latest standards and include electrical charging, blue badge and parent & child directionals along with additional parking for the upper level.
Qty - 1
- 15 Parking reminders - single sided**
450mm(w) x 700mm(h) - lamp post mounted
Whole panels to be replaced with latest standards.
Qty - 2 panels in 2 locations



- 16 Electrical charging point**
602mm(w) x 800mm(h) - freestanding
Whole sign to be replaced with latest standards in same location.
Qty - 1
- 17 Reserved for blue badge holders**
602mm(w) x 800mm (h)
Whole sign to be replaced with latest standards due to damage.
Qty - 1
- 18 Reserved for blue badge holders**
602mm (w) x 800mm (h) - freestanding
Both panels to be replaced to latest standards. Sign to be single sided and posts cleaned.
Qty - 4



- 20 Bicycle park**
602mm(w) x 800mm(h) - freestanding
Both panels to be replaced to latest standards. Sign to be single sided and posts cleaned.
Qty - 1
- 22 Customer collections**
602mm(w) x 800mm(h) - wall mounted
Whole sign to be replaced with latest standards and area made good.
Qty - 1
- 23 Parent and child**
602mm (w) x 800mm (h) - freestanding
Both panels to be replaced to latest standards. Sign to be single sided and posts cleaned.
Qty - 3