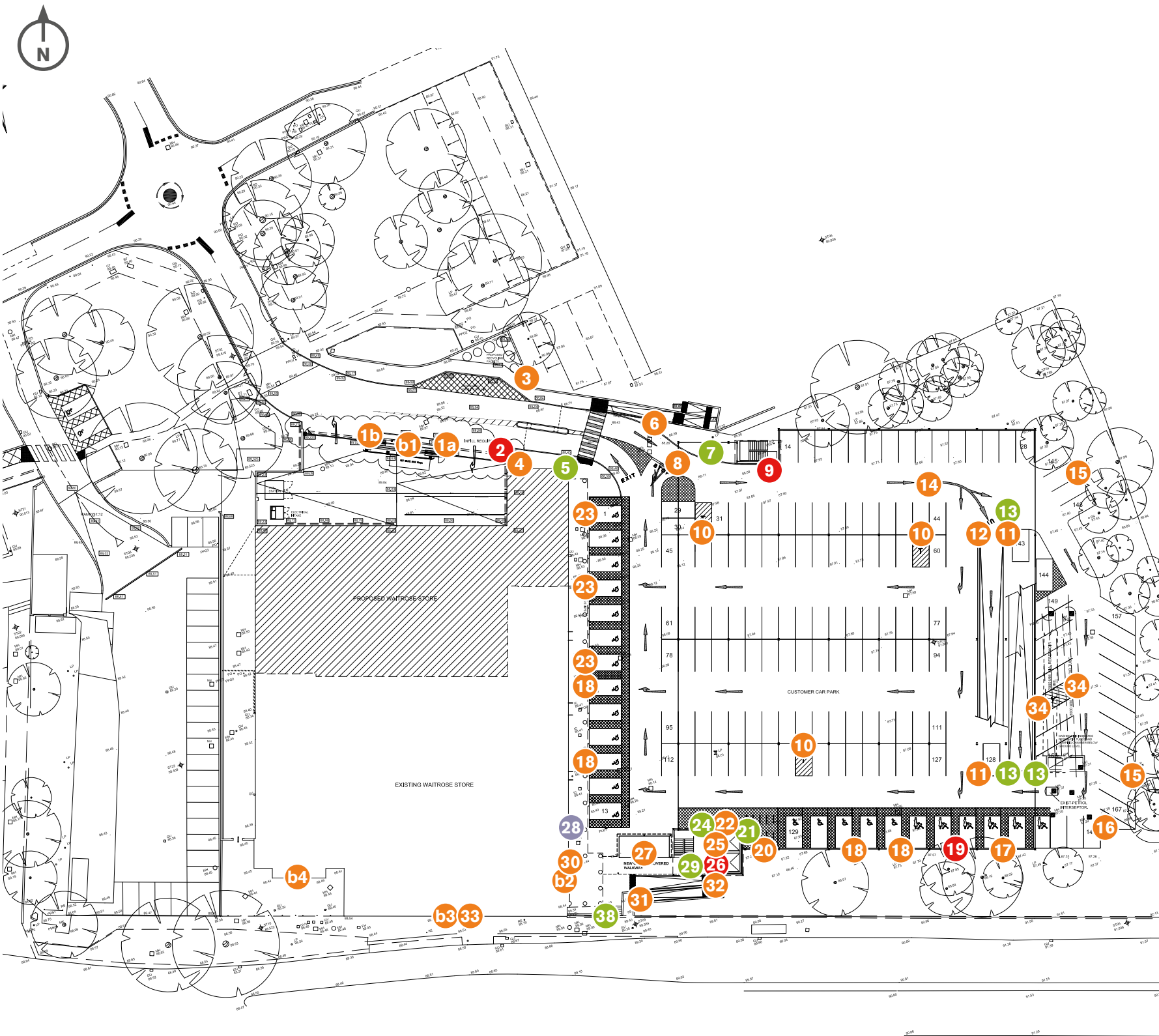


Drawing No. 2e - Car park signage - Ground level



Existing signage to be removed



2
Ring bell sign
528mm(w) x 330mm (h) - wall mounted
To be removed and area made good
Qty - 1



9
Stairs to upper car park - hanging
250mm(h)
To be removed and area made good
Qty - 1



19
Reserved for blue badge holders
602mm(w) x 800mm (h)
To be removed and area made good
Qty - 1



26
Lifts to upper car park
602mm(w) x 220mm (h)
Existing panel sign to be removed
Qty - 1



32
Shopping hours
720mm(w) x 915mm (h)
Existing panel sign to be removed
Qty - 1