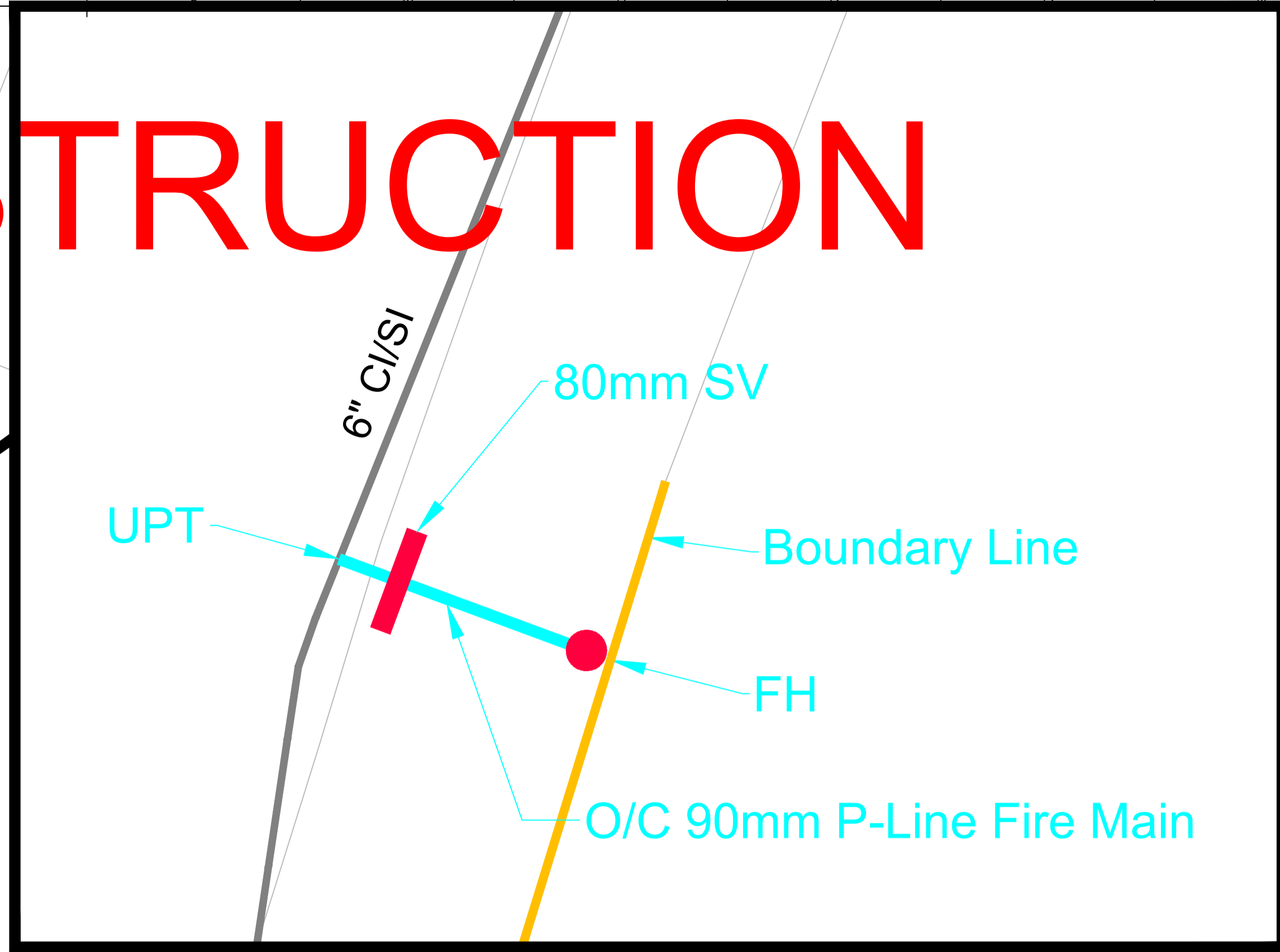


# NOT FOR CONSTRUCTION



- NOTES**
- Lay 4m of 90mm Protecta-Line Fire main
- All stop cocks located in roads or vehicle cross overs should be suitable for the expected vehicular loading.
  - Communication pipes in carriageway to be ducted.
  - Ducts for service pipes to be supplied and laid by developer at a depth of 750mm and should project 300mm beyond kerb line.
  - Water mains are not laid in ducts.
  - Chapter 8 required.

**BARRIER PIPE REQUIRED**

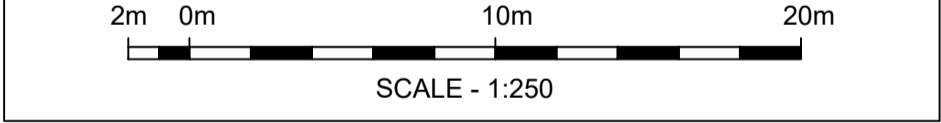
**MEDIUM AND HIGH RISK PROJECT REGISTER**

Risk Ref Symbol	Hazard	Controls
	High Voltage Electric Cables	Verification of utility drawings by site investigation prior to works.

UTILITY STAFF PLANS MUST BE CONSULTED PRIOR TO ANY EXCAVATION!  
 APPROVED AND CALIBRATED CABLE AVOIDANCE TOOLS MUST BE USED AT ALL PROPOSED EXCAVATIONS!  
**SAFE DIG METHODS MUST BE EMPLOYED AT ALL TIMES!**

**DEVELOPER SERVICES KEY LEGEND**

MAINS TECHNIQUE / OTHERS		PROPOSED FITTINGS / OTHER	
DESCRIPTION	LEGEND	DESCRIPTION	LEGEND
PIPE-BURSTING		RECORDED BURST	
DRILLING		SAFEGUARD REGISTER CUSTOMERS	
OPEN-CUT		OPEN SLUICE VALVE	
NO EXCAVATION		CLOSED VALVE	
PROPOSED SERVICE		PRESSURE REDUCING VALVE (PRV)	
PROPOSED SERVICE DUCT		NON-RETURN VALVE (NRV)	
TO BE ABANDONED		AIR VALVE (AV)	
EXISTING MAIN		WASHOUT (WO)	
SCOPE BOUNDARY		FIRE HYDRANT (FH)	
		DISTRICT METER (M)	
		END CAP / FLAP	



All dimensions are in millimetres, unless otherwise stated.  
 All dimensions to be checked on site prior to commencement of any work.  
 The position of utility services and apparatus shown on this plan is approximate only. Therefore the customer accepts responsibility for the extent of inaccuracy. The actual position of apparatus must be determined on site by making hand-dug test holes. The Company requires a minimum of two working days notice of the intention to locate test holes.  
 Except where prior written permission has been obtained, it is an offence under Section 174 of the Water Industry Act 1989 to operate or interfere with any valves, hydrants or other apparatus owned by Affinity Water Limited.  
 Copyright protected - no part of this drawing may be reproduced without prior consent of Affinity Water Limited.

T - Tender Issue, C - Construction Issues

Rev	Description	Drawn	Date
T1	ISSUED FOR TENDER	BH	12/12/17

**Affinity Water**

Project Name & Site:  
 BESSEMER ROAD, WELWYN GARDEN CITY, AL7 1HH

Title & Discipline:  
 PROPOSED ROUTE FOR NEW SUPPLY

DISTRICT METER ZONE: ???

Drawn: BH | APM: CS | HDZ: ??? | ISO A1  
 Highway Authority: WELWYN GARDEN CITY | OS Reference: ??? | 84 1x328mm

Drawing Number: **DS0011381-01** | Rev: **T1**

