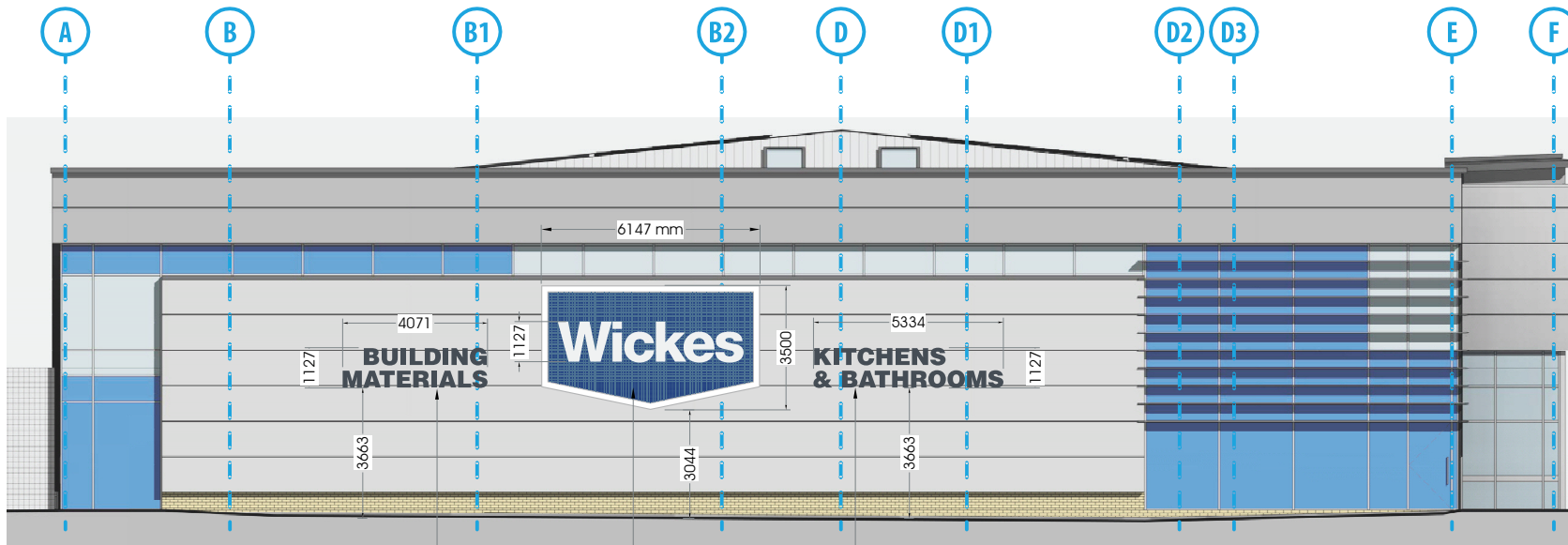


SOUTH ELEVATION - BRIDGE ROAD



Sign 4(a)
Flat Cut Letters
Non Illuminated
COLOUR TBC

Sign 3
Built Up Sign
Internal LEDs to
Wickes & Border Only

Sign 4(b)
Flat Cut Letters
Non Illuminated
COLOUR TBC

Sign Proposals

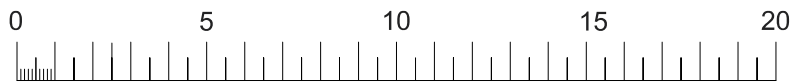
Sign 3

Size: 6147 x 3500 x 150mm
Tray Returns: 50mm
Border Returns:
95mm U-Channel + 5mm Opal
Letter Returns: 75mm
Item Description:
1 no of folded aluminium tray fixed on angles and spaced off cladding by 5-10mm, complete with internal top hat sections. Aluminium tray has face fixed 50x50mm galvanised mesh to face via Tek screws & galvanised plate washers.
1 no of U-channel borders with opal acrylic faces fixed to aluminium tray. Border is cladded with 1.2mm galvanised steel trim with 30mm rim. Letters are built up 5mm opal acrylic and face fixed to aluminium tray. Letter returns are clad with 1.2mm galvanised steel with 100mm returns (protrudes 25mm past letter face), and sprayed blue to inside edge only.
Illumination Detail: LEDs to face illuminate opal border and 'Wickes' letter detail only.
Production Notes: Opal acrylic requires rebated panel joints.

Sign 4(a) - 4071 x 1127mm

Sign 4(b) - 5334 x 1127mm

Item Description:
2no sets of flat cut 3mm aluminium letters, powder coated into colour and fixed to cladding on welded studs complete with brass/nickel Locators.
Overall Letter height to match Wickes 'W' and baseline height in line with shoulder of Wickes Chevron Logo.
Illumination Detail: None



SCALE BAR METRES 1:200



Logo Installation for Reference

This Drawing & information contained may not be copied or used without prior consent from Spencer Signs. Colour shown may not accurately match any colour references. Sizes in mm unless stated otherwise.

	DRG. NO. 70535-B	Date 07/12/16	Checked 	Rev.	Date	Initial	Revision Detail
	Drawn By CW	Scale 1:200@A4	Drawing Status Production	A	14/12/2016	CW	Product Text Swapped
				B	01/02/2017	CW	Signs increased

NOTES

Specification checked and approved for Production By
(sign & print name)

Typeface(s)/Colours
Helvetica Bold
Helvetica Black

P288 C	P432 C	White	50x50 12g Zinc Mesh