

NOTES

Planting

All trees to be double staked using appropriate softwood stakes and rubber tree ties.

Ensure all planting areas are free draining with well broken up clean sub and top soils with a minimum stated depth to allow free drainage to all trees and shrubs.

All planting areas to receive a minimum of 75mm of amenity bark mulch.

Native hedges to be planted at 5 plants per linear metre in a double staggered row approximately 450mm between rows.

Native hedgerow planting to consist of a selection of the following species planted in a double staggered row at 5 plants per linear metre:

Cornus sanguinea	10%
Crataegus monogyna	60%
Euonymus europaeus	5%
Fagus sylvatica	5%
Ilex aquifolium	5%
Ligustrum vulgare	5%
Prunus spinosa	10%

Grass Seeding

Amenity grass seeding areas to be cultivated and seeded with British Seed Houses (BSH) seed mix A4 'Amenity Mix' or similar and sow at a rate of 35g m².

Topsoil Depths

Tree pits min. 0.8x0.8x0.8m
Shrubs 400mm
Hedging 400mm
Grass 150mm

If necessary imported topsoil to be general grade in accordance with BS 3882. 2015

Maintenance

All planting areas to be maintained weed free by hand and plant failures replaced like for like for a minimum of 3 years. Maintenance operations to include watering of trees during extended dry periods and topping up of mulch as required.

PLANT SCHEDULE

Species	Specification
Trees	
Acer pseudoplatanus 'Brilliantissimum'	6-8 1/2 STD BR or PG
Amelanchier lamarckii	12-14 H/STD RB
Betula pendula	8-10 STD BR or PG
Prunus 'Amanogawa'	6-8 1/2 STD PG
Prunus avium	12-14 H/STD BR
Quercus robur	8-10 STD BR
Shrubs	
Cornus alba	2 per m2 3L PG
Cotoneaster salicifolius 'Gnom'	2 per m2 5L PG
Lonicera pileata	4 per m2 3L PG
Lonicera nitida 'Elegant'	4 per m2 3L PG
Lavandula angustifolia 'Hidcote'	4 per m2 2L PG
Euonymus japonicus 'Jean Hugues'	3 per m2 3L PG
Symphoricarpos x chenaultii 'Hancock'	3 per m2 3L PG
Vinca minor	6 per m2 2L PG
Amenity Hedging	
Fagus sylvatica	80-100cm BR 4 per linear m
Prunus laurocerasus 'Otto Luyken'	60-80cm 10L PG 3 per linear m
Prunus laurocerasus 'Rotundifolia'	150-175cm RB 2 per linear m
RB = Rootballed PG = pot or container grown BR = Bare root	

TREE PROTECTION METHOD STATEMENT

There are 2 Oak trees within the site that are subject to Tree Preservation Orders (TPO's) and are to be retained and protected during construction works. All retained trees to be protected by temporary 'Herras' fencing to BS: 5837:2012. This will exclude all construction works, storage of materials, excavation or vehicles from the area and give due regard to the root protection area (RPA) of all retained trees and shrubs which will extend to a minimum of the extent of the tree canopy as directed by an arboriculturist on site.

Where the proposed access driveway crosses the RPA of T1 a 'No Dig Driveway Construction' will be undertaken as shown on plan (refer to engineers drawing 16063-01-A, 16063-02-A & 16063-03 for details)

LEGEND

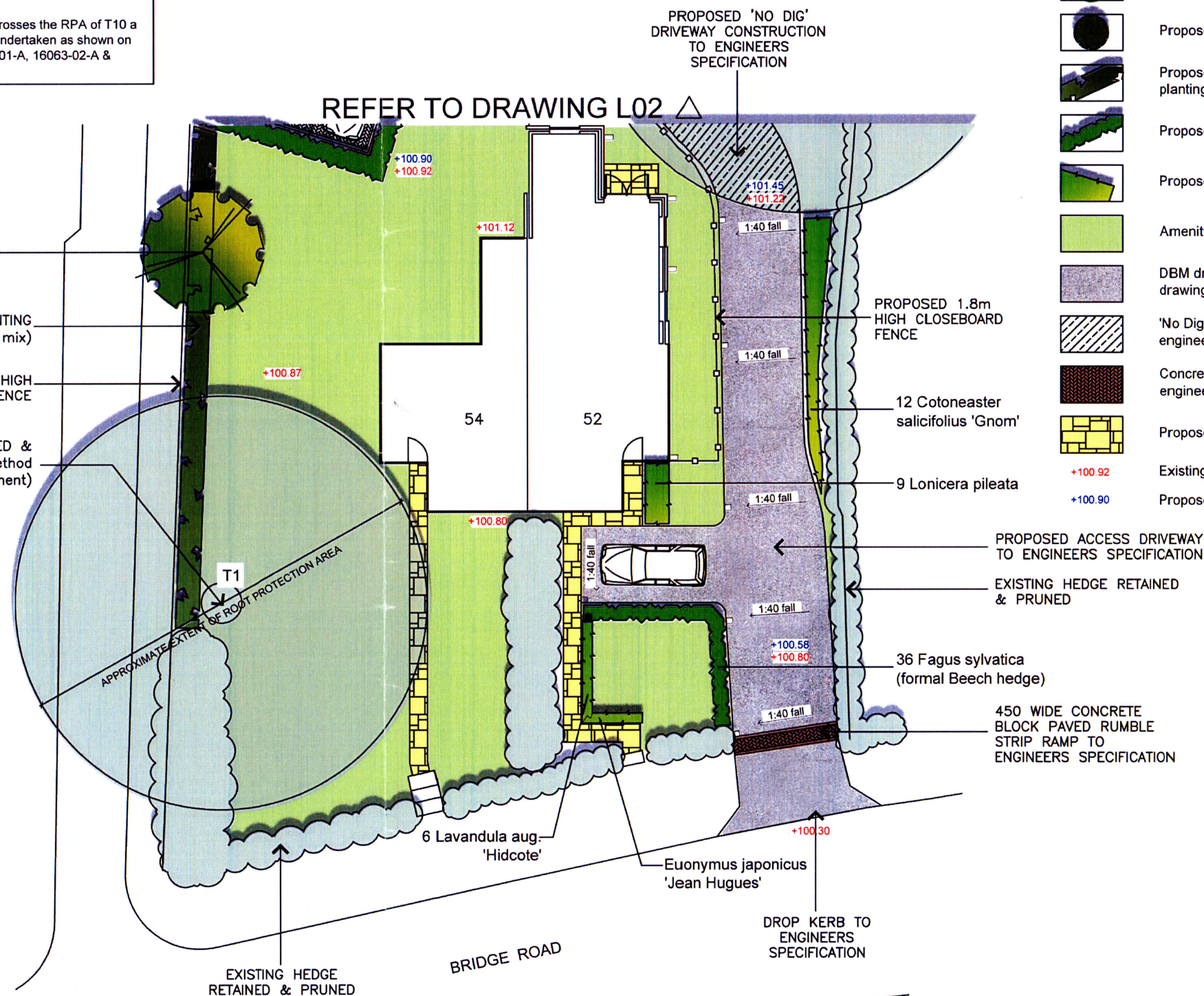
	Existing vegetation retained
	Existing trees retained & protected
	Proposed native boundary trees
	Proposed amenity trees
	Proposed native hedgerow planting
	Proposed amenity hedging
	Proposed shrubs & groundcovers
	Amenity grass
	DBM driveway (refer engineers drawings for details)
	'No Dig' HRA driveway (refer engineers drawings for details)
	Concrete block parking bays (refer engineers drawings for details)
	Proposed flag stone paving
	Existing finished ground level
	Proposed finished ground level

1 Prunus avium

NATIVE HEDGEROW PLANTING (refer to notes for species mix)

PROPOSED 1.8m HIGH CLOSEBOARD FENCE

EXISTING OAK TREE RETAINED & PROTECTED (refer to Method Statement)



STATUS AND REVISION DESCRIPTION	PROJECT No.	DATUM	SCALE AT A3	CHECKED	APPROVED	DATE
			1:200			

SURVEYED	terrain	OCT '15
DESIGNED	MM	AUG '16
CHECKED		
APPROVED		



52 -54 BRIDGE RD, WELWYN GARDEN CITY
PROPOSED LANDSCAPE PLAN -Sheet 1 of 2

STATUS	DRAWING No.	SHEET No.	REV.
PLANNING	2028	L01	-