

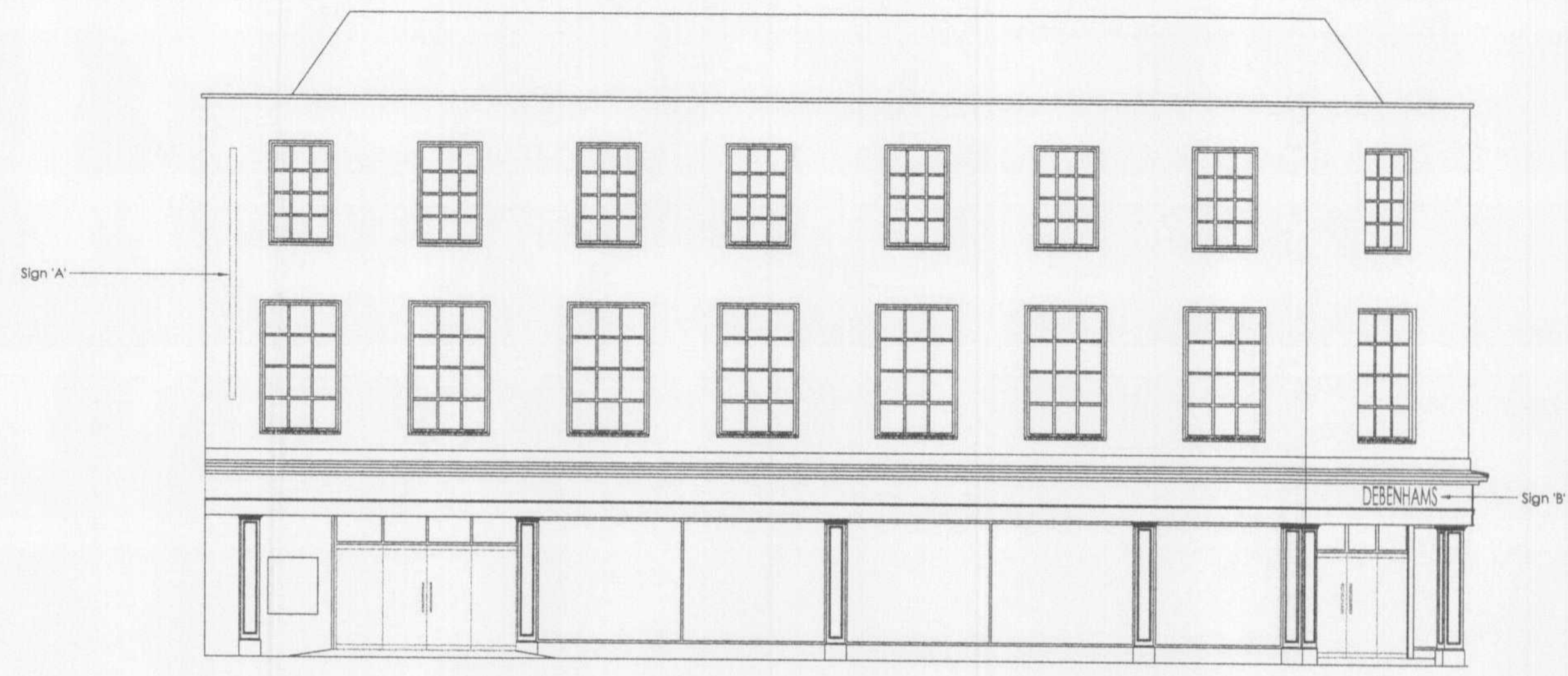
DO NOT SCALE FROM DRAWING. DIMENSIONS TO BE CHECKED ON SITE.
 TO BE READ IN CONJUNCTION WITH ALL OTHER DRAWINGS & SPECIFICATIONS BY SPECIALIST CONTRACTORS.
 ALL DIMENSIONS ARE TO STRUCTURAL ELEMENTS UNLESS OTHERWISE STATED.
 ANY DISCREPANCIES BETWEEN DRAWINGS TO BE REPORTED TO TROIKA BEFORE COMMENCEMENT OF AFFECTED WORK.
 THIS DRAWING IS COPYRIGHT OF TROIKA RETAIL CONSULTANCY AND SHALL NOT BE REPRODUCED WITHOUT THEIR PERMISSION.

LEGEND

- Fully maintained emergency light fitting with running man symbol
- Non maintained emergency light fitting
- Fire alarm break glass call point
- Fire alarm sounder
- 9L Water extinguisher
- Carbon dioxide fire extinguisher
- Fire exit directional sign
- "Push bar to open" sign. (50mm Letters)
- "Fire exit keep clear" sign

NOTES

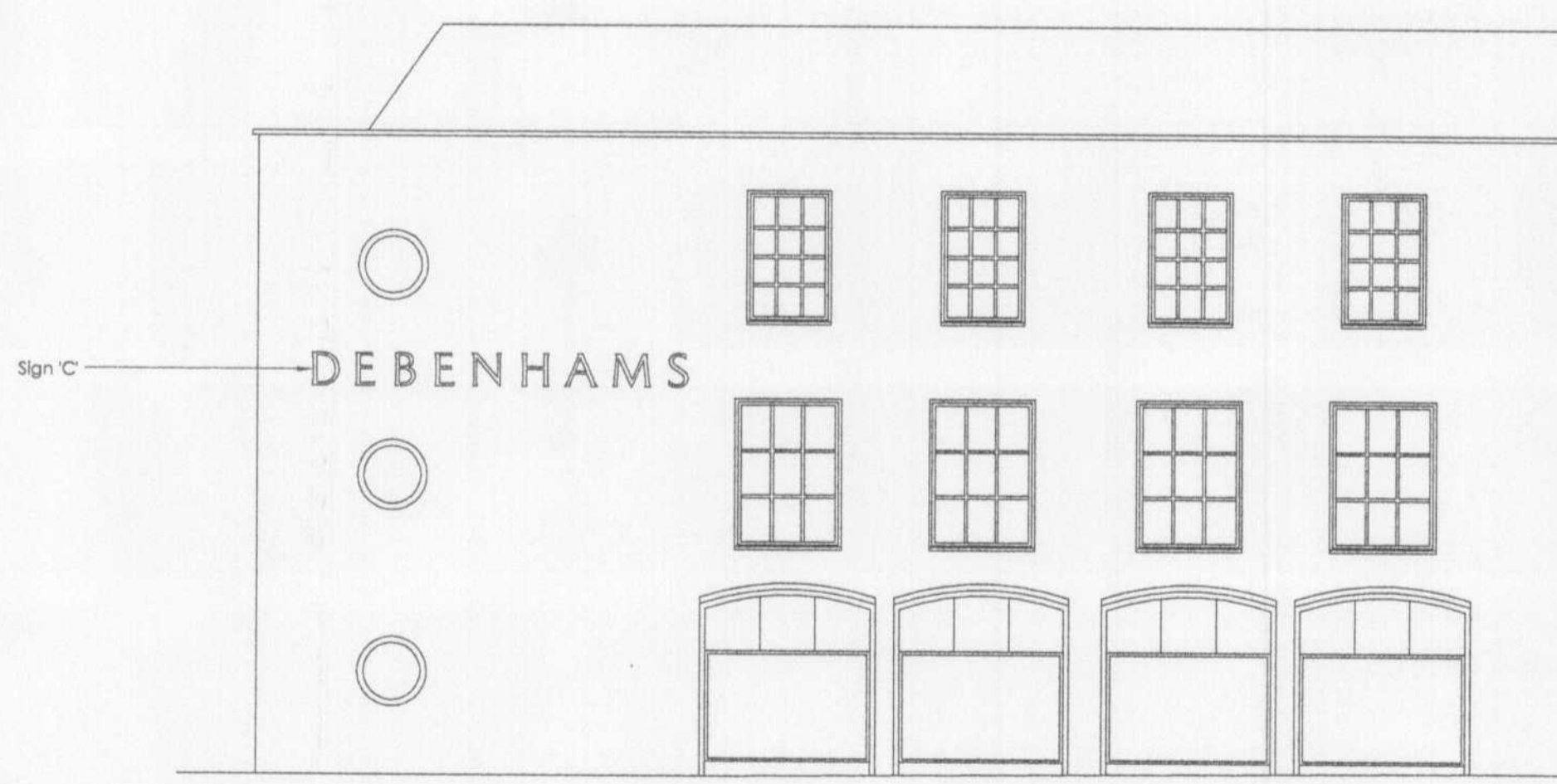
ALL FINISHES TO PROVIDE CLASS 1* SPREAD OF FLAME TO WALLS & CEILINGS, CLASS 0* TO FIRE ESCAPE ROUTES.
 NEW EMERGENCY LIGHTING INSTALLATION TO COMPLY WITH B.S. 5266 Pt. 1: 1997.
 NEW FIRE SAFETY SIGNS & EXIT NOTICES TO COMPLY WITH B.S. 5499 Pt. 1: 2000.
 EXIT DOORS NOT IN NORMAL USE TO BE SECURED WITH EMERGENCY TYPE FASTENINGS TO COMPLY WITH B.S. EN 1125.
 FIRE ALARM EXTENSION TO COMPLY WITH B.S. 5839 Pt. 1: 2000.
 ALL LUMINAIRES TO COMPLY WITH B.S. 4533 AND EC 598 (2). ALL NEW LIGHTING TO BE ENERGY LIGHTING, WHERE NECESSARY IN ACCORDANCE WITH APPROVED DOCUMENT L2 (SEE CLAUSES 1.48 - 1.52 AND 1.58 - 1.59).
 A COMMISSIONING CERTIFICATE TO BE PROVIDED FOR THE SERVICES SYSTEMS (SEE CLAUSE 2 OF APPROVED DOCUMENT L2) AND INFORMATION & METERING TO BE PROVIDED TO ENABLE EFFICIENT MANAGEMENT OF ENERGY CONSUMPTION (SEE SECTION 3 OF APPROVED DOCUMENT L2).
 CAVITY BARRIERS TO BE INSTALLED WHERE SHOWN & ABOVE SUMPED CEILING AT NO MORE THAN 20m CENTRES IN ACCORDANCE WITH APPROVED DOCUMENT & ZOD. SECTION 10.
 AUTOMATIC SMOKE DETECTION SYSTEM TO BE PROVIDED WITHIN THE SALES STORAGE AREAS (IF ANY) & FIRE ESCAPE CORRIDORS BELOW THE NEW GALLERY FLOOR AND LINKED TO THE EXISTING MANUAL FIRE ALARM SYSTEM.



EAST ELEVATION TO STONEHILLS



NORTH ELEVATION



WEST ELEVATION

Sign 'A'

Internally illuminated double sided banner sign, size 5180mm x 1192mm x 150mm thick to read 'DEBENHAMS'. 2mm aluminium back panels stove enamelled glass black with white opal letters fret cut into face. Obscure background with letters only to be illuminated, luminance not to exceed 1750 candelas. Sign supported from 60mm dia. cane with 150 x 200mm wall plates bolted to brickwork.

Sign 'B'

Internally illuminated individual built-up sign letters 365mm high to read 'DEBENHAMS' white opal faces to letters, with black stove enamelled returns & halo effect using clear vivak back tray, letters individually illuminated by L.E.D. Luminance not to exceed 1750 candelas.

Sign 'C'

Internally illuminated individual built-up sign letters, 500mm high to read 'DEBENHAMS', white opal faces to letters, with black stove enamelled returns & halo effect using clear vivak backtray, letters individually illuminated by L.E.D. Luminance not to exceed 1750 candelas.

PLANNING DEPARTMENT
 OFFICE COPY
 22 MAR 2007
 N07/0480 -

A 19-03-07 Signage altered (AJG)		
Rev.	Date	Description
		PRELIMINARY
		TENDER
		COMMENT/APPROVAL <input checked="" type="checkbox"/>
		CONSTRUCTION
		AS BUILT

Client
 Debenhams
 Welwyn Garden City



T: 01708 768700 F: 01708 768708
 E: cad@troikaretail.co.uk W: www.troikaretail.co.uk
 3 Balgore Square Gidea Park Romford Essex RM2 6AU

Title
 Proposed Signage