

# EXISTING (Original Signage)

Existing Post office sign is 1m wide, 0.7m high and 0.05m deep

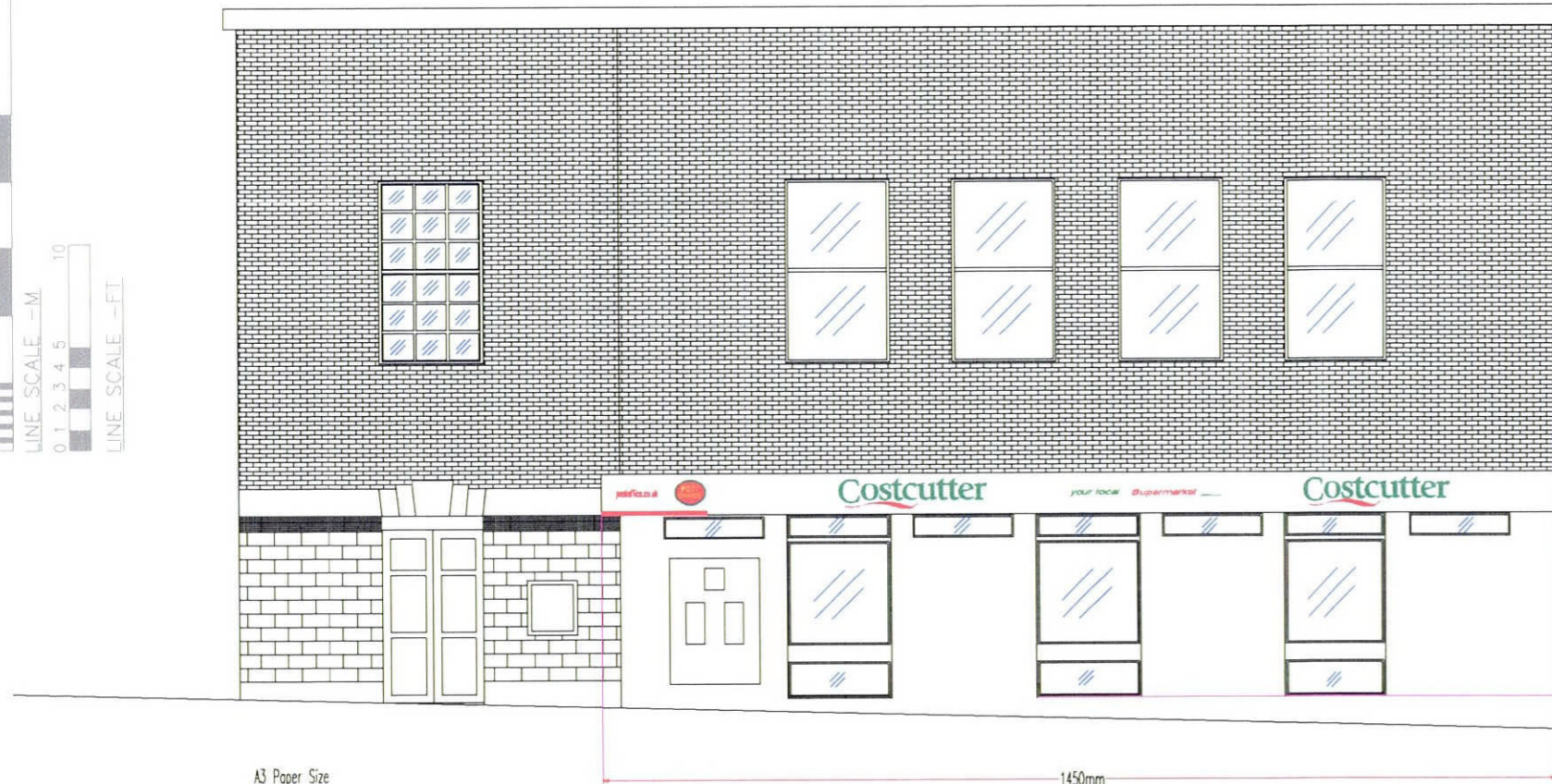
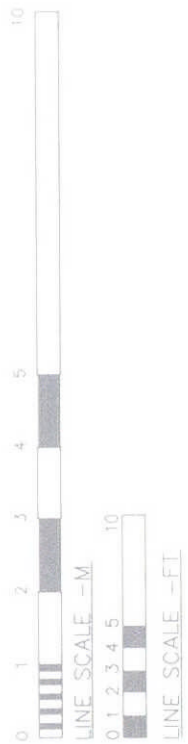
PLANNING DEPARTMENT  
OFFICE COPY

15 DEC 2011  
2011/2683


# PROPOSED

The Store 3 main types of advertising displays:

1. Fascia = 14.5m wide x 0.6m high x 0.05m deep. Aluminium fascia fixed to building with top and bottom rails beneath 50mm returns.
  - 1.1. Background colour is white RAL 9016 satin white with green letters pantone 343 and red swoosh pantone 032
  - 1.2. Fascia is 3m from the ground
2. Projecting internally illuminated lightbox = 0.9m deep x 0.6m high x 0.18m wide. Silver anodised aluminium frame with 4mm opal acrylic panels with fixing bracket screwed to wall.
  - 2.1. Background is opal acrylic with green letters pantone 343 and red swoosh pantone 032
  - 2.2. Projecting sign will be illuminated with a static fluorescent light.
  - 2.3. Projecting sign is 3m from the ground
3. Window imagery - 2.5m high x 1.5m wide vinyl. Applied internally
  - 3.1. Background is white with green base pantone 343 and red swoosh pantone 032 with various colours for the people.
  - 3.2. Window imagery is 0.5m from the ground



A3 Paper Size

DRAWING TITLE WELWYN GARDEN CITY POST OFFICE 17 HOWARDGATE WELWYN GARDEN CITY HERTS AL8 6AL		
SCALE 1:100	DRAWING No KL- 060610 - SF	DATE 06/05/11
DRAWN kevin.lear@costcutter.com		REVISIONS SF
 HARVEST MILLS, COMMON ROAD, DUNNINGTON, YORK. YO19 5RY TELEPHONE: 01904 488663 FAX 01904 489828		