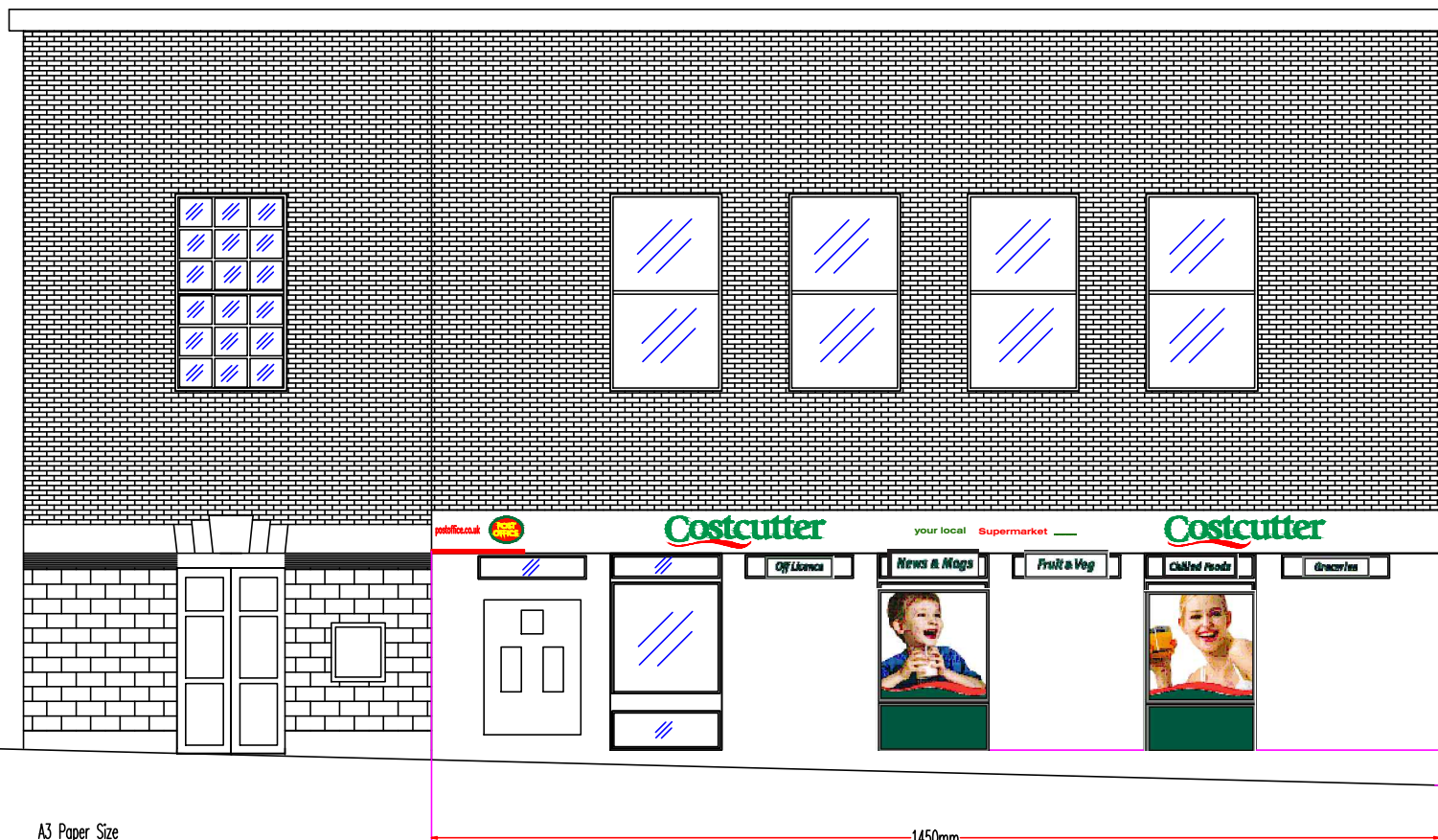
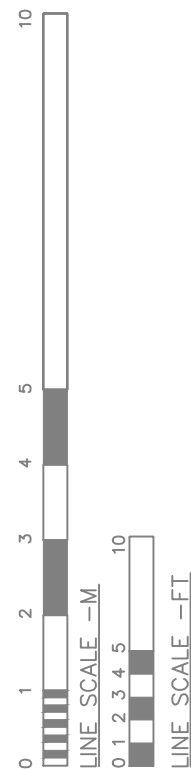


EXISTING (Original Signage)

Existing Post office sign is 1m wide, 0.7m high and 0.05m deep



PROPOSED

The Store 3 main types of advertising displays:


- Fascia = 14.5m wide x 0.6m high x 0.05m deep. Aluminium fascia fixed to building with top and bottom rails beneath 50mm returns.
 - Background colour is white RAL 9016 satin white with green letters pantone 343 and red swoosh pantone 032
 - Fascia is 3m from the ground
- Projecting internally illuminated lightbox = 0.9m deep x 0.6m high x 0.18m wide. Silver anodised aluminium frame with 4mm opal acrylic panels with fixing bracket screwed to wall.
 - Background is opal acrylic with green letters pantone 343 and red swoosh pantone 032
 - Projecting sign will be illuminated with a static florescent light.
 - Projecting sign is 3m from the ground
- Window imagery - 2.5m high x 1.5m wide vinyl. Applied internally
 - Background is white with green base pantone 343 and red swoosh pantone 032 with various colours for the people.
 - Window imagery is 0.5m from the ground

50mm Depth of fascia is 50mm

900mm
180mm
3000mm

A3 Paper Size

1450mm

DRAWING TITLE WELWYN GARDEN CITY POST OFFICE 17 HOWARDSGATE WELWYN GARDEN CITY HERTS AL8 6AL		
SCALE 1:100@A3	DRAWING No KL- 060610 - SF	DATE 06/05/11
DRAWN kevin.lear@costcutter.com	REVISIONS SF	
 HARVEST MILLS, COMMON ROAD, DUNNINGTON, YORK. YO19 5RY TELEPHONE: 01904 488663 FAX 01904 489828		