

Project
CAMPUS WEST, WELWYN GARDEN CITY
ALTERATIONS TO ENTRANCE 1

Drawing
EXISTING EXTERNAL AREAS

REVISIONS
 A OCT 08 GENERAL AMENDMENTS FOR
 PLANNING & PRICING

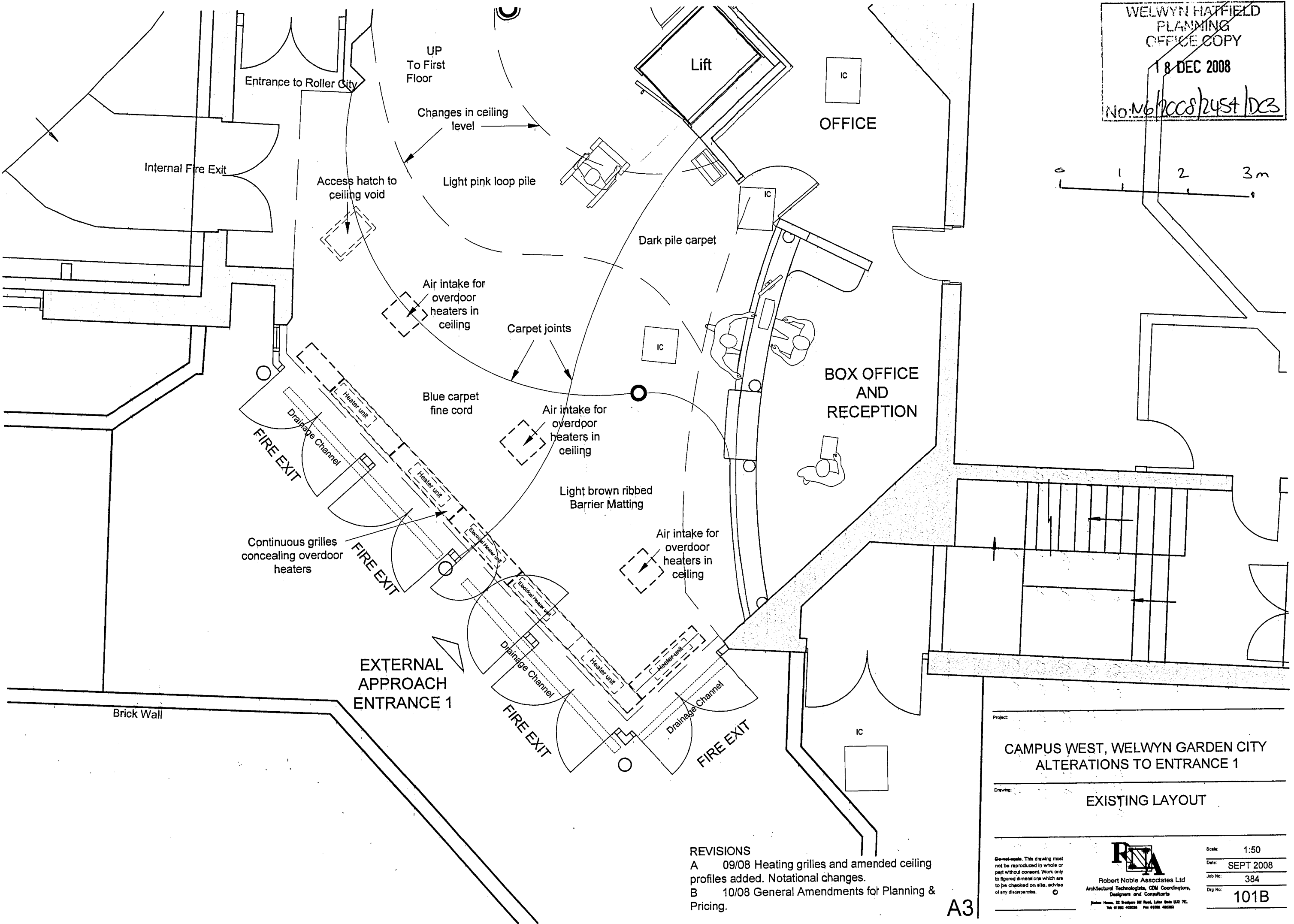
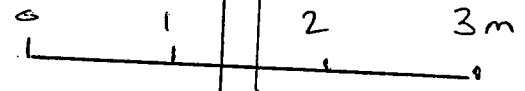
Disclaimer: This drawing must not be reproduced in whole or part without consent. Work only to figured dimensions which are to be checked on site, advise of any discrepancies.



Scale: 1:100
 Date: SEPT 2008
 Job No: 384
 Dwg No: 100 A

A3

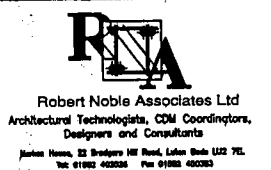
WELWYN HATFIELD
 PLANNING
 OFFICE COPY
 18 DEC 2008
 No. M6/2008/2454/DC3



Project: CAMPUS WEST, WELWYN GARDEN CITY ALTERATIONS TO ENTRANCE 1
 Drawing: EXISTING LAYOUT

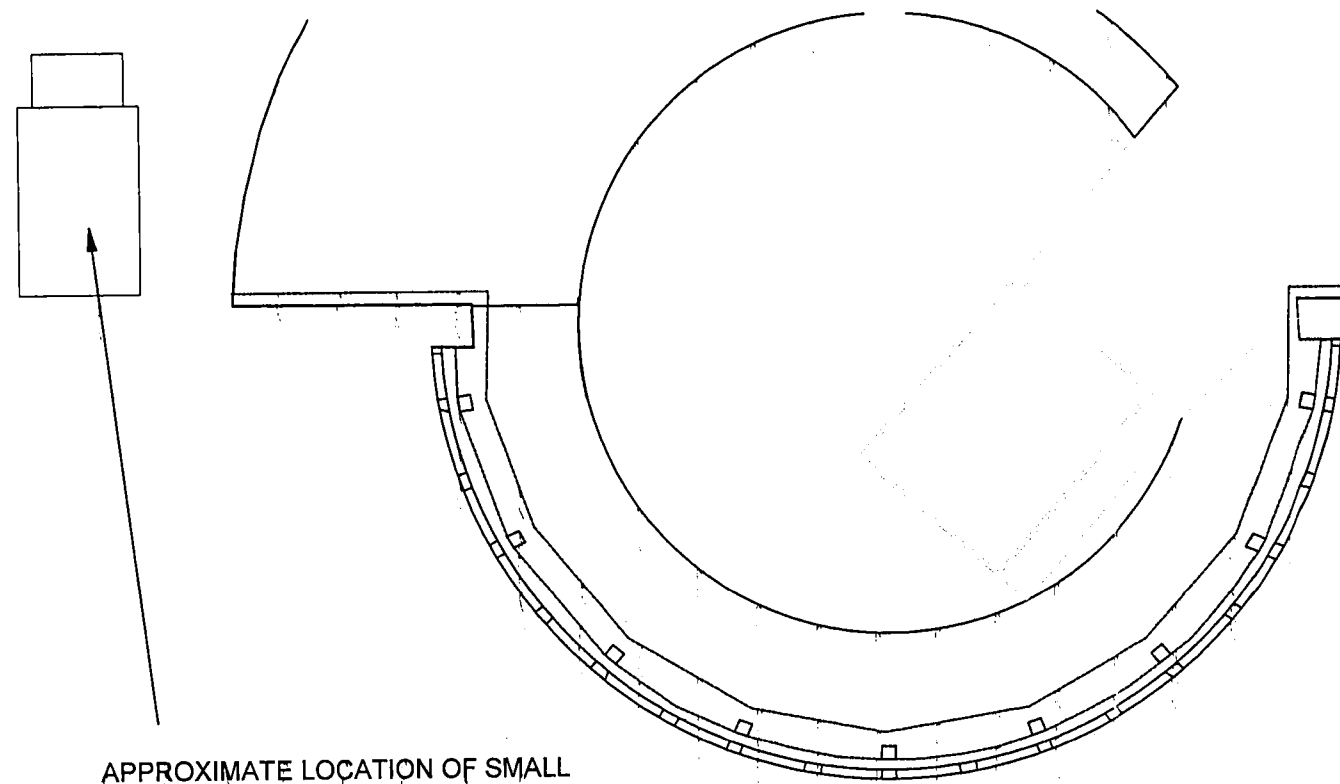
REVISIONS
 A 09/08 Heating grilles and amended ceiling profiles added. Notational changes.
 B 10/08 General Amendments for Planning & Pricing.

Scale: 1:50
 Date: SEPT 2008
 Job No: 384
 Drg No: 101B



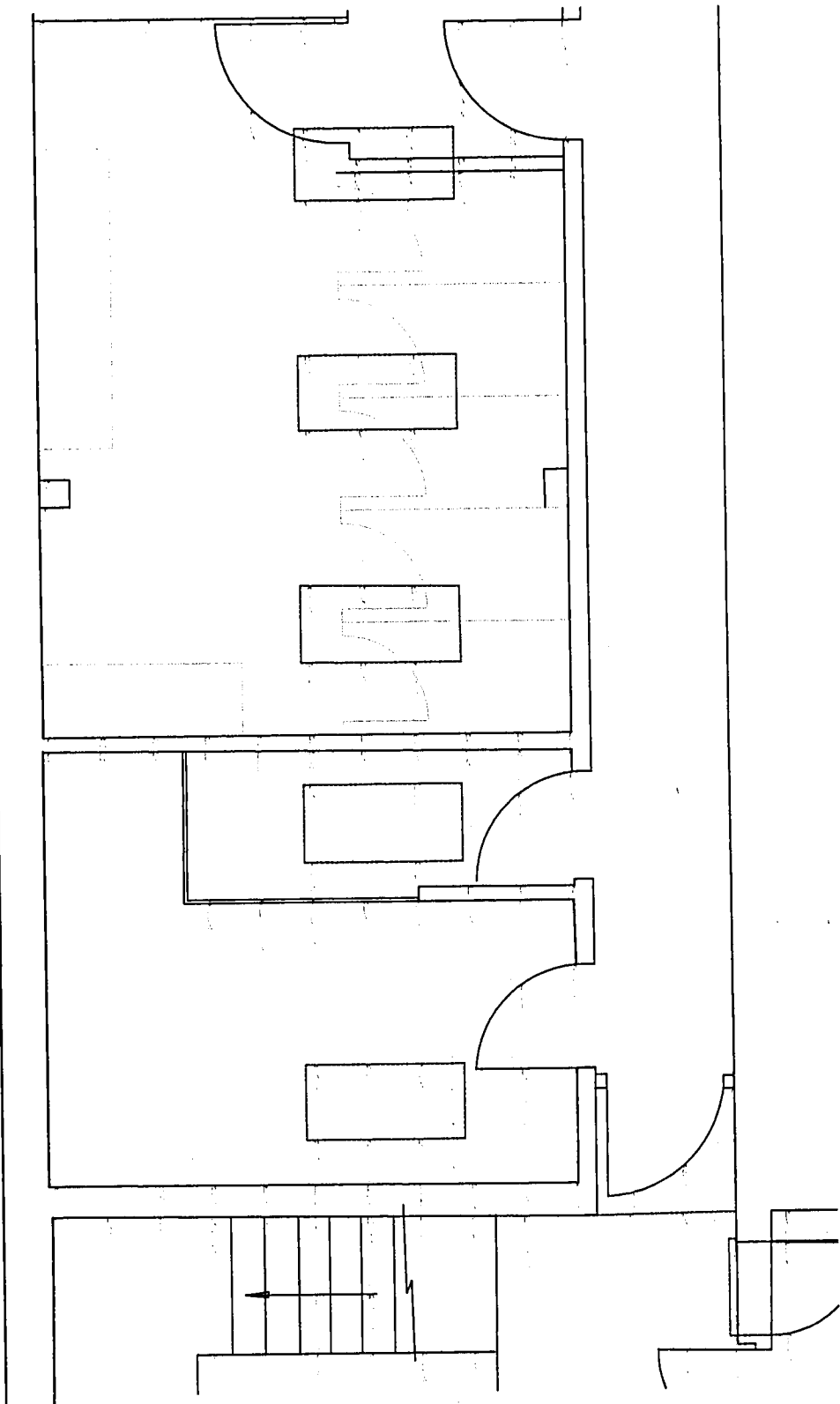
General note: This drawing must not be reproduced in whole or part without consent. Work only to be checked on site, advise of any discrepancies.

A3



APPROXIMATE LOCATION OF SMALL WEATHERMASTER WEATHERPROOF DOUBLE SKIN AIR HANDLING UNIT WITH LOW PRESSURE HOT WATER HEATER CONNECTED TO EXISTING SYSTEM SET ON RUBBER COMPRESSION AND ANTI VIBRATION MOUNTS, POLYESTER POWDER COATED LIGHT GREY BS 00.A.05 SHEET STEEL CASING. WEIGHT 180KG PLUS 10KG FOR CHANNEL BASE.

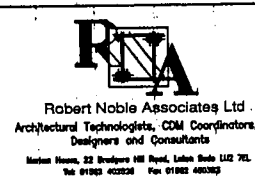
NEW ROOF MOUNTED AHU ON LOWER FLAT ROOF BUT CONCEALED BEHIND APPROX 1.050m CHANGE IN LEVEL OF HIGHER FLAT ROOF TOWARDS BUILDING FRONTAGE.



Project: **CAMPUS WEST
ARTS AND CONFERENCE CENTRE**

Drawing: **ENTRANCE 1
PART ROOF PLAN
(SHOWING LOCATION OF NEW AHU ON EXISTING STRUCTURE)**

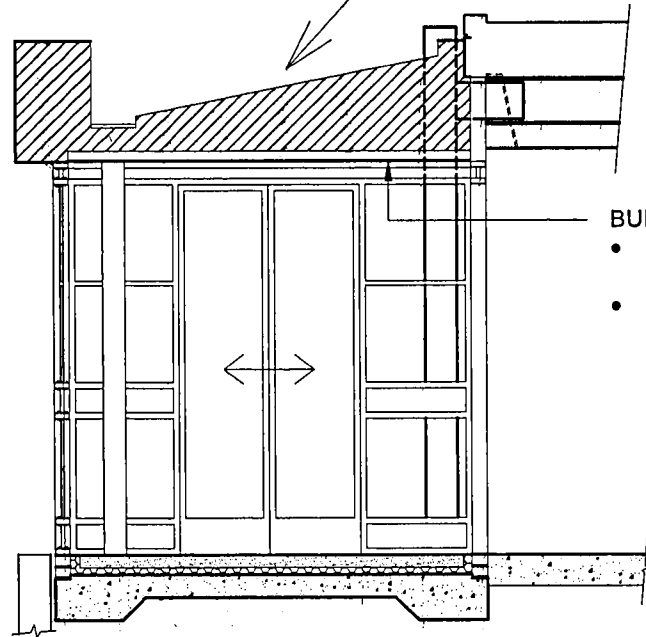
Do not scale. This drawing must not be reproduced in whole or part without consent. Work only to figured dimensions which are to be checked on site. Advise of any discrepancies.



Scale: 1:50
Date: OCT 2008
Job No: 384
Dwg No: 207

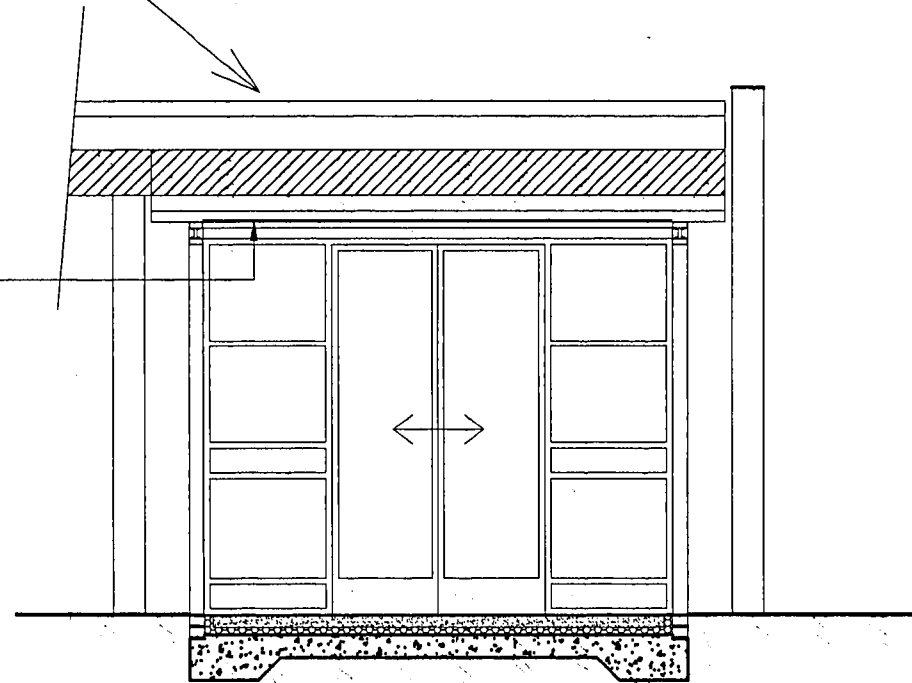
A3

CANOPY AND ROOF ABOVE DRAUGHT LOBBY BY SPECIALIST CONTRACTOR. (SHADED AREA INDICATES ZONE FOR SUPPORT FRAMEWORK AND GUTTER ALL TO AGREED DETAILS).

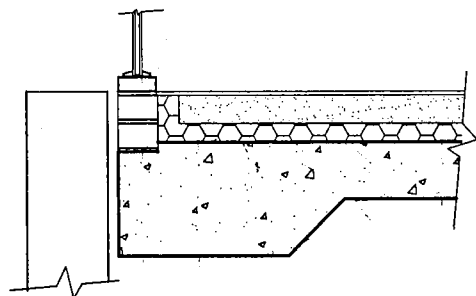


SECTION A A

- BUILDERS WORK:
- LAY-IN GRID PERFORATED SQUARE METAL CEILING TILE SYSTEM THROUGHOUT LOBBY.
 - RIGID THERMAL INSULATION WITHIN ROOF VOID SUBJECT TO STRUCTURAL MEMBERS.



SECTION B B



TYPICAL FOUNDATION DETAIL
SCALE 1:20

WELWYN HATFIELD
PLANNING
OFFICE COPY
18 DEC 2008
No: N6/2008/2454/DC3

REVISIONS	
A	03/11 NOTATIONAL AMENDMENTS

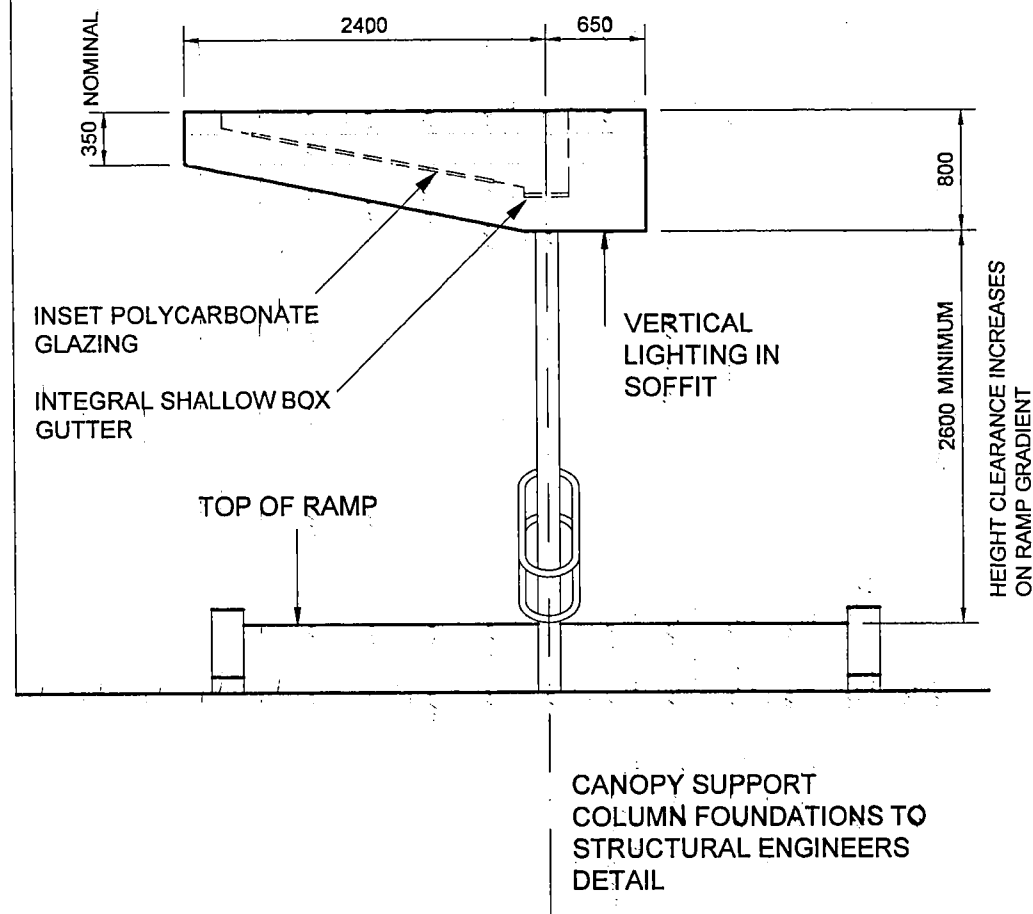
A3

Project:	CAMPUS WEST, WELWYN GARDEN CITY ALTERATIONS TO ENTRANCE 1
Drawing:	LOBBY AND CANOPY SECTIONS
Scale:	1:50 and 1:20
Date:	SEPT 2008
Job No:	384
Draw No:	205 A

© Robert Noble Associates Ltd. This drawing must not be reproduced in whole or part without consent. Work only to figured dimensions which are to be checked on site. advise of any discrepancies.

Robert Noble Associates Ltd
Architectural Technologists, CDM Coordinators,
Designers and Consultants
Harlow House, 22 Bridgway Hill Road, Letchworth SG11 2JL
Tel: 01462 422224 Fax: 01462 422223

ROLLER CITY



WESTERN END ELEVATION OF CANOPY

DRAUGHT LOBBY AND GLAZING
BEHIND OMITTED FOR CLARITY

WELWYN HATFIELD
 PLANNING
 OFFICE COPY
 18 DEC 2008
 No: NG/2008/2454/DC3

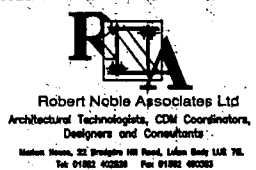
REVISIONS	
A	03/11 NOTATIONAL AMENDMENTS

Project: **CAMPUS WEST, WELWYN GARDEN CITY
ALTERATIONS TO ENTRANCE 1**

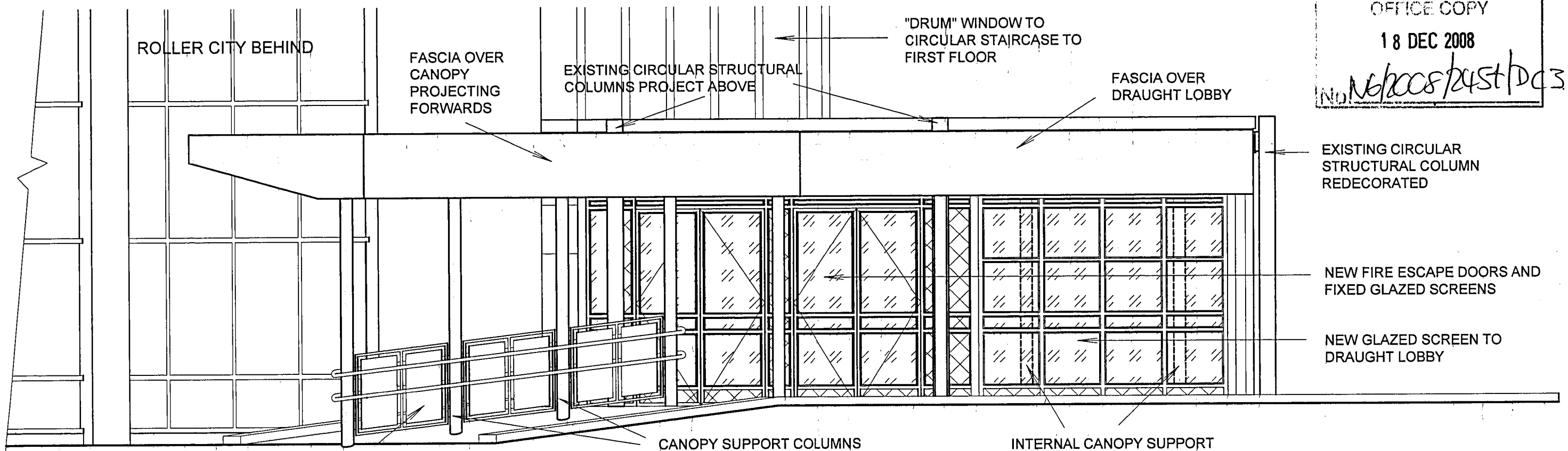
Drawing: **LOBBY AND CANOPY
ELEVATIONS SHEET 2**

A3

Disclaimer: This drawing must not be reproduced in whole or part without consent. Work only to figured dimensions which are to be checked on site. advise of any discrepancies.



Scale: 1:50
 Date: OCT 2008
 Job No: 384
 Dwg No: 204 A

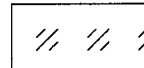
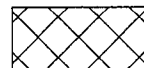


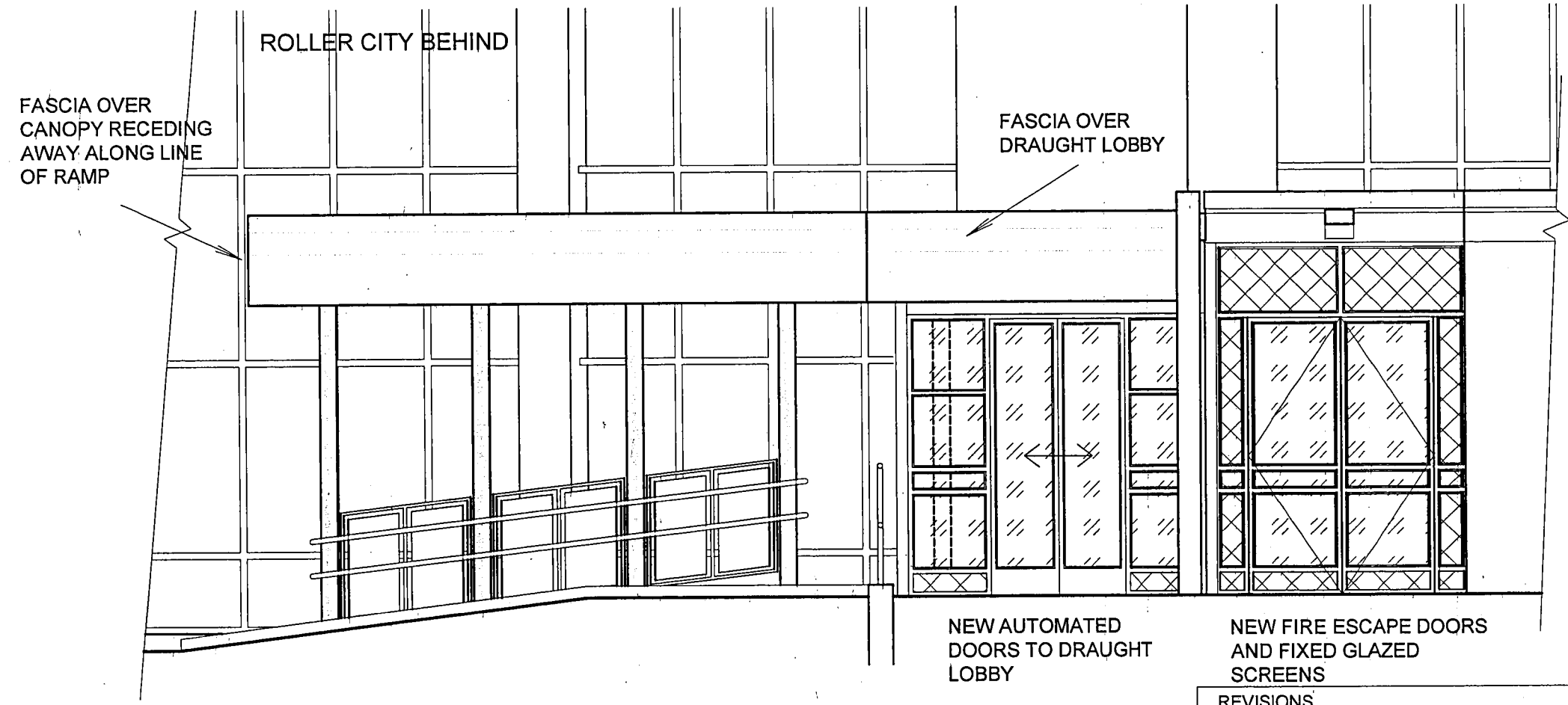
PERFORATED POLYESTER POWDER COATED INFIL PANELS TO BALUSTRADING RAILS BETWEEN POSTS.
 NEW TWIN HANDRAILS IN THICK NYLON COATED ALUMINIUM OR STEEL RAIL SYSTEM.

SOUTH WESTERN ELEVATION

KEY AND EXTERNAL FINISHES

- ALL NEW ALUMINIUM BOX SECTION FIXED FRAMING TO NEW MANUAL DOORS, NEW DRAUGHT LOBBIES AND INFIL PANELS AND NEW FASCIAS WITH POLYESTER POWDER COATED FINISH. COLOUR TO MATCH EXISTING ROYAL BLUE - BELIEVED TO BE RAL 5000.
- ALL NEW MANUAL HINGED AND AUTOMATED SLIDING DOOR FRAMING FINISHED IN POLYESTER POWDER COATING. COLOUR TO CONTRAST WITH FIXED FRAMING FOR DDA PURPOSES. PROPOSED COLOUR: TO MATCH BS 08.C.31 HONEYSUCKLE (TO MATCH REPLACEMENT WINDOWS THROUGHOUT CAMPUS WEST).

 GLAZING - ALL CLEAR DOUBLE GLAZED UNITS WITH LAMINATED LOW EMISSIVITY COATED GLASS.
 COMPOSITE INSULATED PANEL - WITH INERT SELF FINISHED INTERNAL AND EXTERNAL FACINGS - SUBJECT TO MATERIAL OFFERED BY GLAZING MANUFACTURER. COLOUR - LIGHT GREY (FINAL RAL COLOUR TO BE AGREED).



SOUTH EASTERN ELEVATION

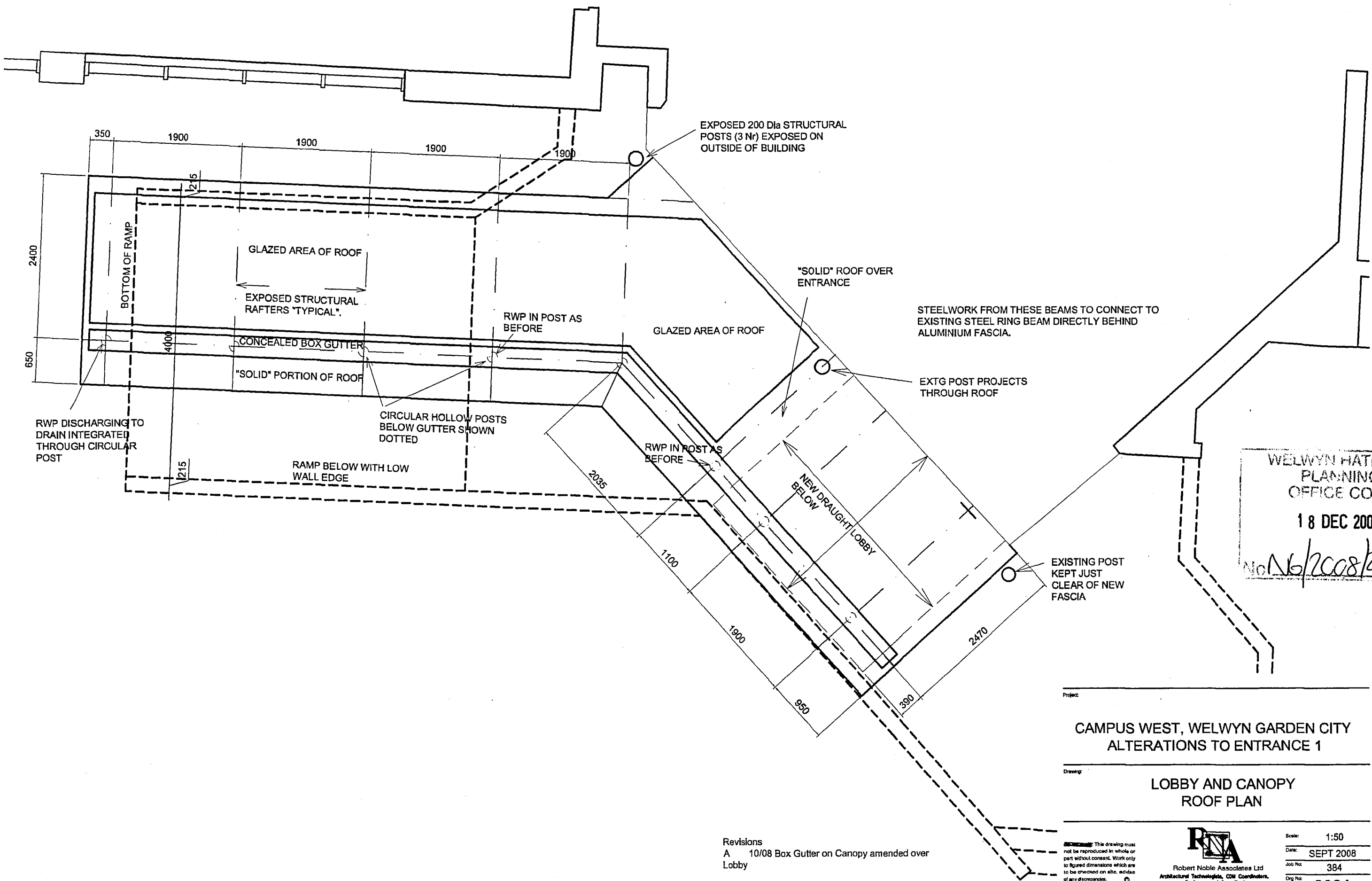
REVISIONS

A	03/11 NOTATIONAL AMENDMENTS
---	-----------------------------

**CAMPUS WEST, WELWYN GARDEN CITY
 ALTERATIONS TO ENTRANCE 1**

**LOBBY AND CANOPY
 ELEVATIONS SHEET 1**

A3



WELWYN HATFIELD
 PLANNING
 OFFICE COPY
 18 DEC 2008
 No 16/2008/245A/DC3

Project
**CAMPUS WEST, WELWYN GARDEN CITY
 ALTERATIONS TO ENTRANCE 1**

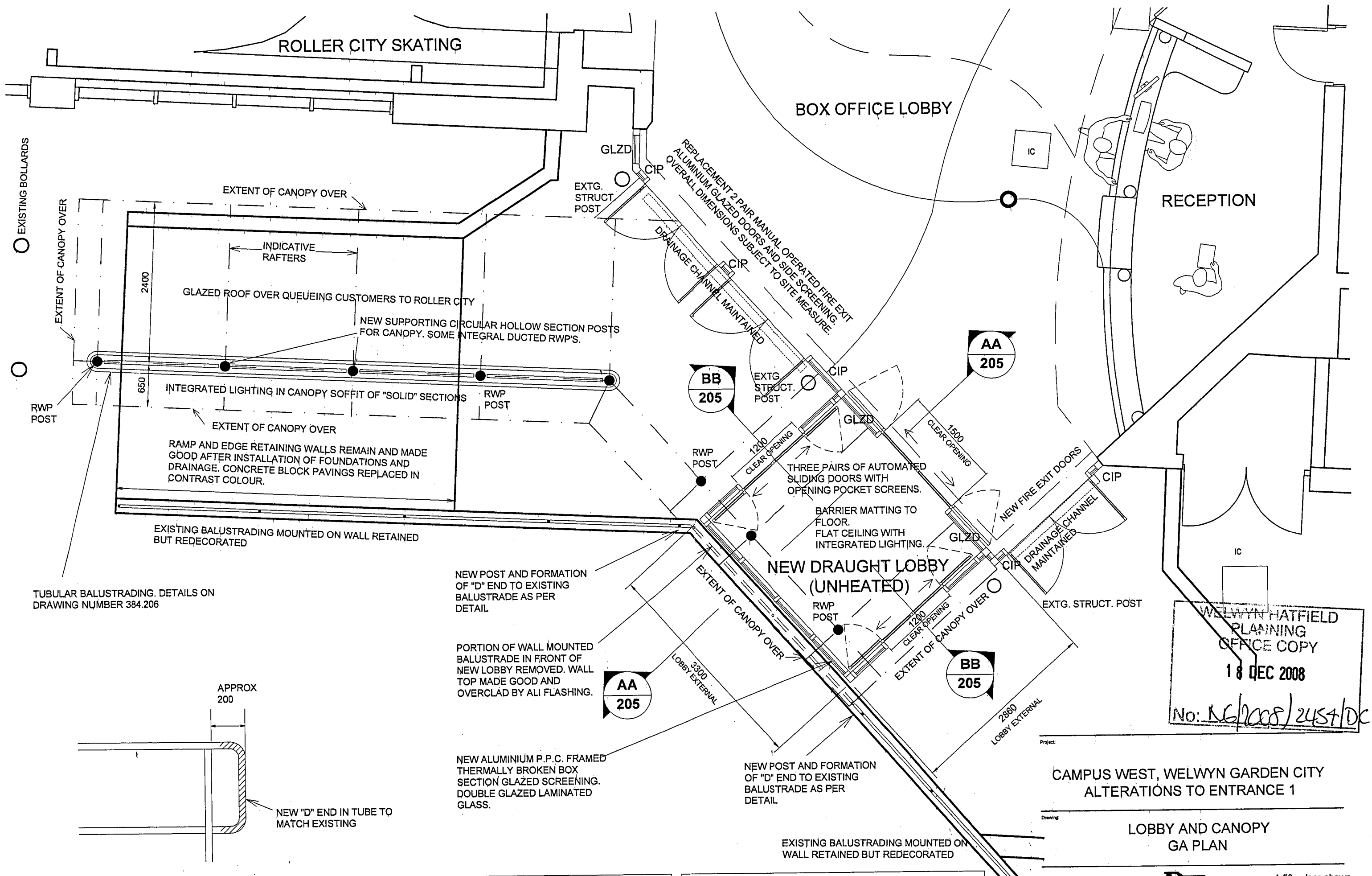
Drawing
**LOBBY AND CANOPY
 ROOF PLAN**

Revisions
 A 10/08 Box Gutter on Canopy amended over
 Lobby

DISCLAIMER: This drawing must not be reproduced in whole or part without consent. Work only to figured dimensions which are to be checked on site, advice of any discrepancies.



Scale: 1:50
 Date: SEPT 2008
 Job No: 384
 Dwg No: 202A



TUBULAR BALUSTRADING. DETAILS ON DRAWING NUMBER 384.206

EXISTING BALUSTRADING MOUNTED ON WALL RETAINED BUT REDECORATED

RAMP AND EDGE RETAINING WALLS REMAIN AND MADE GOOD AFTER INSTALLATION OF FOUNDATIONS AND DRAINAGE. CONCRETE BLOCK PAVINGS REPLACED IN CONTRAST COLOUR.

INTEGRATED LIGHTING IN CANOPY SOFFIT OF "SOLID" SECTIONS

NEW SUPPORTING CIRCULAR HOLLOW SECTION POSTS FOR CANOPY. SOME INTEGRAL DUCTED RWPS.

GLAZED ROOF OVER QUEUEING CUSTOMERS TO ROLLER CITY

INDICATIVE RAFTERS

EXTENT OF CANOPY OVER

EXISTING BOLLARDS

NEW POST AND FORMATION OF "D" END TO EXISTING BALUSTRADING AS PER DETAIL

PORTION OF WALL MOUNTED BALUSTRADING IN FRONT OF NEW LOBBY REMOVED. WALL TOP MADE GOOD AND OVERCLAD BY ALI FLASHING.

NEW ALUMINIUM P.P.C. FRAMED THERMALLY BROKEN BOX SECTION GLAZED SCREENING. DOUBLE GLAZED LAMINATED GLASS.

NEW POST AND FORMATION OF "D" END TO EXISTING BALUSTRADING AS PER DETAIL

EXISTING BALUSTRADING MOUNTED ON WALL RETAINED BUT REDECORATED

DETAIL OF NEW END FOR CUT BALUSTRADING

SCALE 1:20

KEY TO SIDE PANELS	
GLZD	GLAZED PANEL
CIP	COMPOSITE INSULATED PANELS

REVISIONS	
A	10/08 GLAZED AND COMPOSITE INSULATED PANELS INDICATED ON NEW GLAZED SCREENS TO LOBBY
B	03/05 NOTATIONAL AMENDMENTS.

WELWYN HATFIELD PLANNING OFFICE COPY
18 DEC 2008
No: NG/2008/2454/DC3

CAMPUS WEST, WELWYN GARDEN CITY
ALTERATIONS TO ENTRANCE 1

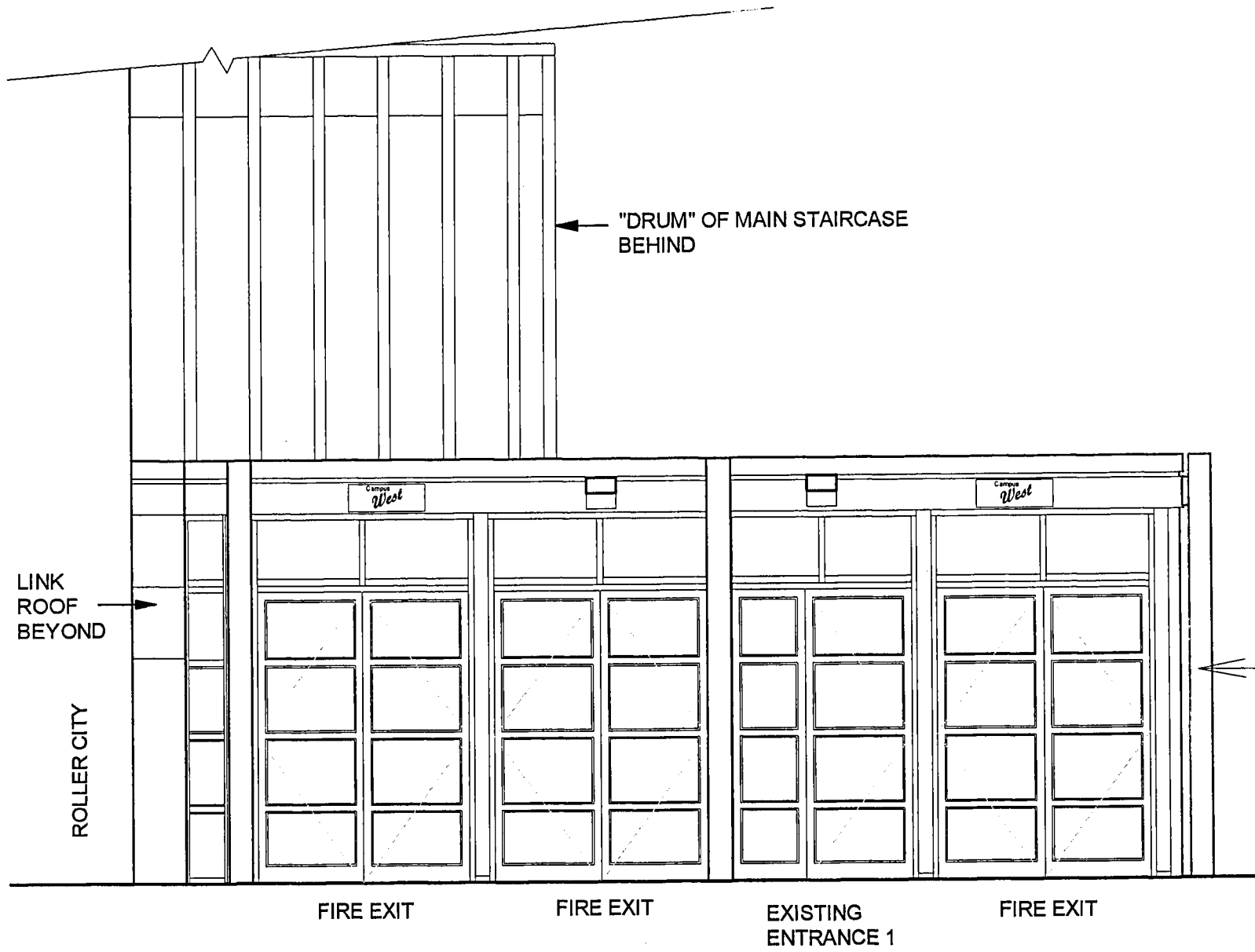
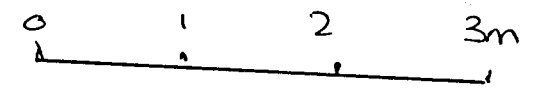
LOBBY AND CANOPY
GA PLAN

A3

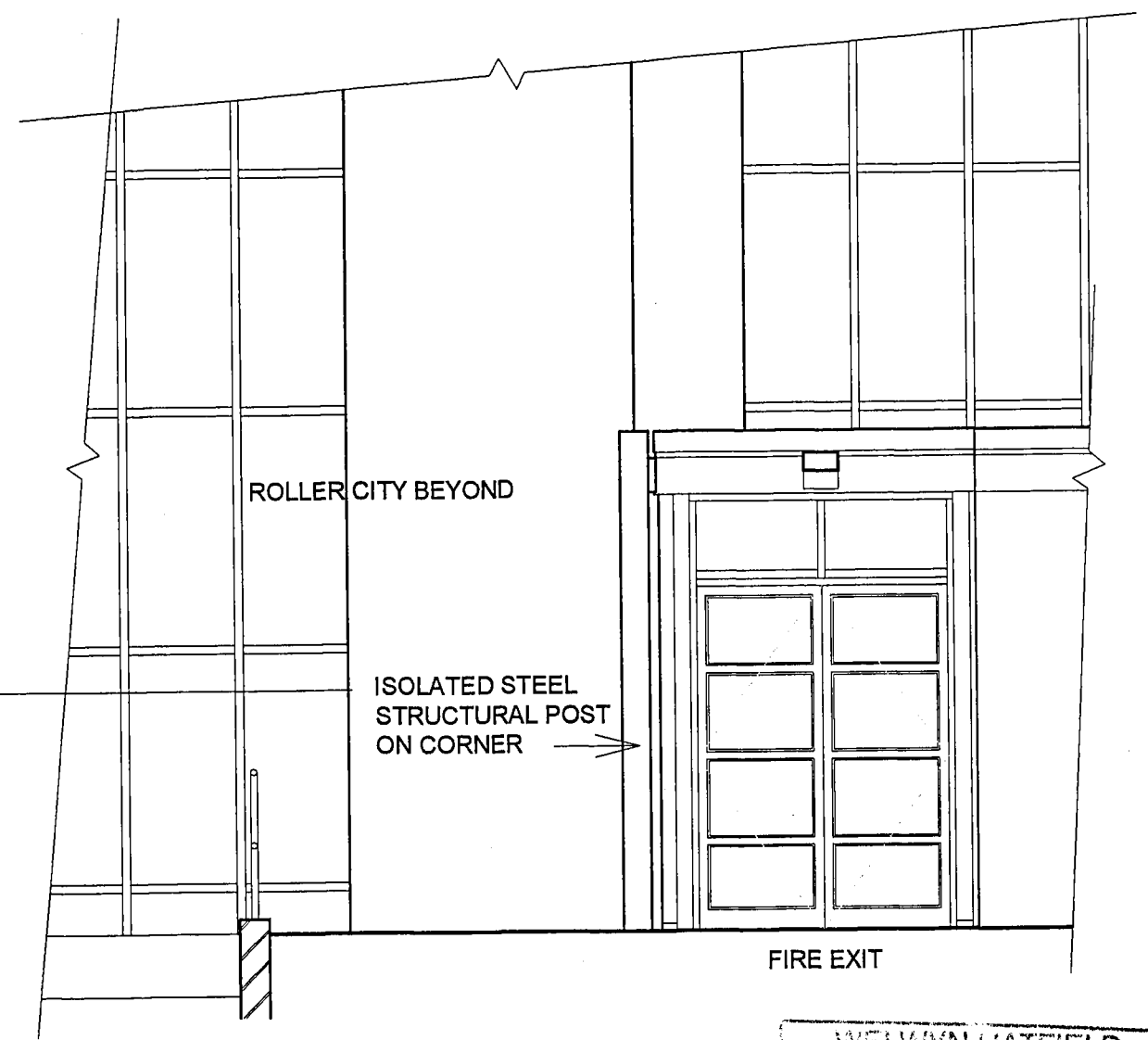
Be-note-see. This drawing must not be reproduced in whole or part without consent. Work only to figured dimensions which are to be checked on site. advise of any discrepancies.

Robert Noble Associates Ltd
Architectural Technologists, CDM Coordinators,
Designers and Consultants
Market House, 22 Bridge Street, Luton LU2 7UL
Tel: 01582 402238 Fax: 01582 402239

Scale:	1:50 unless shown
Date:	SEPT 2008
Job No:	384
Dir No:	201 B



FRONT (WEST) ELEVATION (Parapet and Railing omitted for clarity)



END (SOUTH) ELEVATION

WELWYN HATFIELD
 PLANNING
 OFFICE COPY
 18 DEC 2008
 No: NG/2008/2457/DC3

Project: CAMPUS WEST, WELWYN GARDEN CITY ALTERATIONS TO ENTRANCE 1
 Drawing: EXISTING ELEVATIONS

REVISIONS

- A 02/10/08 CIRCULAR STAIRCASE, ROLLER CITY WINDOWS AND BRICKWORK ADDED
- B 23/10/08 GENERAL AMENDMENTS FOR PLANNING & PRICING

A3

Disclaimer: This drawing must not be reproduced in whole or part without consent. Work only to figured dimensions which are to be checked on site. Advise of any discrepancies.



Scale: 1:50
 Date: SEPT 2008
 Job No: 384
 Dwg No: 102B