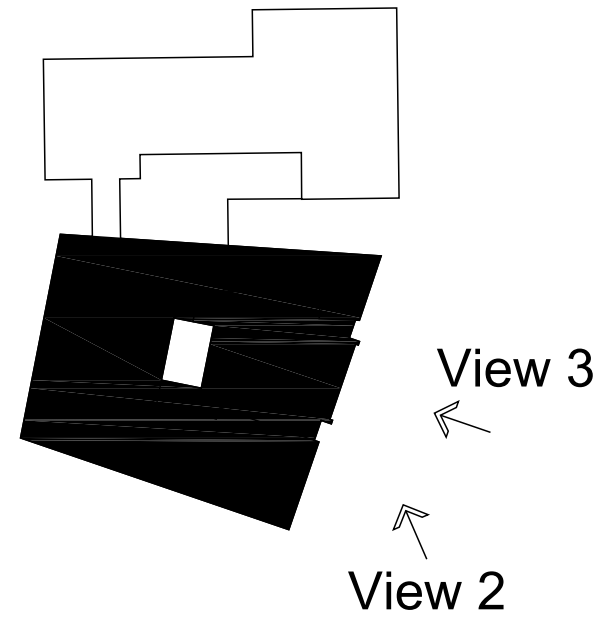


Notes

1. This drawing has been prepared in accordance with the scope of RPS's appointment with its client and is subject to the terms and conditions of that appointment. RPS accepts no liability for any use of this document other than by its client and only for the purposes for which it was prepared and provided.
2. If received electronically it is the recipients responsibility to print to correct scale. Only written dimensions should be used.



Perspective View 2



Perspective View 3

| | | | | |
|--|---------------------------------------|----------|---------|---------|
| | | | | |
| A | Updated to suit Clients requirements. | 24/10/13 | DWS | |
| Rev | Description | Date | Initial | Checked |
| <div><div>1:20 - 0 200mm 400mm 600mm 800mm 1000 1200 1400</div><div>1:100 - 0 1m 2m 3m 4m 5m 6m 7m</div><div>1:50 - 0 1m 2m 3m</div><div>1:5 0 100mm 200mm 300mm</div></div> | | | | |



Highfield House, 5 Ridgeway
Quinton Business Park, Birmingham B32 1AF
T: +44(0)121 213 5500 E: rpsbm@rpsgroup.com F: +44(0)121 213 5502

Client Welwyn Hatfield Borough Council

Project Campus East

Title Proposed Perspective Illustrations
Sheet 2

| | | |
|----------|------------|---------------|
| Status | Drawn By | PM/Checked by |
| Planning | DWS | - |
| Job Ref | Scale @ A2 | Date Created |
| AAA5172 | | 09/08/2013 |

Drawing Number
AAA5172-A-P1-029

Rev
A