

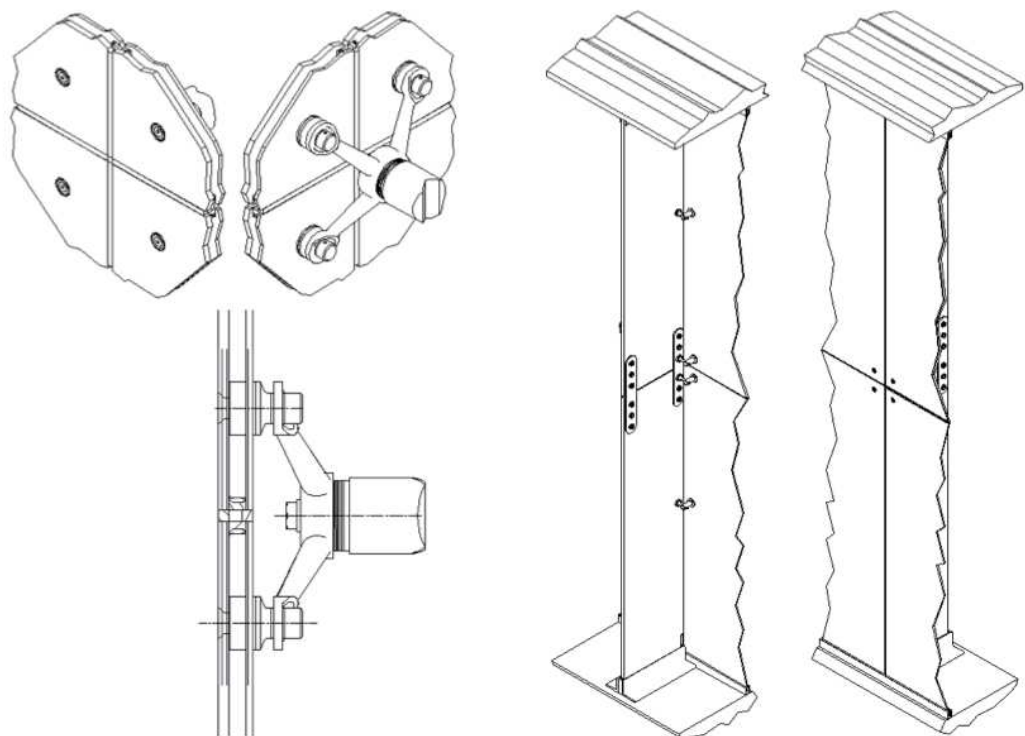
New Brickwork: to match existing as closely as possible



New Mansard tiles to match existing



Structural glazing system - with structural glass fins, with silicon joints between glass panels, all to specialists detail design. Glass tinted for solar control.



Typical detail of a planar glazing system, with structural fins in glass. Final details to specialists detail design.



A	Updated to suit Clients requirements.	30/10/13	ACG	
Rev	Description	Date	Initial	Checked
1:20 - 0	200mm 400mm 600mm 800mm 1000 1200 1400 1600 1800 2000			
1:100 - 0	1m 2m 3m 4m 5m 6m 7m 8m 9m 10m			
1:50 - 0	1m 2m 3m 4m 5m 6m 7m 8m 9m 10m			
1:25 - 0	100mm 200mm 300mm 400mm 500mm			



Entrance feature surround / stone elevational features - Reconstituted Stone, colour: buff (to match existing). To specialists design / details.



Entrance feature surround / stone elevational features - Reconstituted Stone, colour: buff (to match existing). To specialists design / details.



Entrance glazed canopy by specialist



Highfield House, 5 Ridgeway  
Quinton Business Park, Birmingham B32 1AF  
T: +44(0)121 213 5500 E: rpsbm@rpsgroup.com F: +44(0)121 213 5502

Client Welwyn Hatfield Borough Council

Project Campus East

Title Proposed Materials

Status	Drawn By	PM/Checked by
Planning	ACG	-
Job Ref	Scale @ A1	Date Created
AAA5172		16/08/2013

Drawing Number	Rev
AAA5172-A-P1-030	A