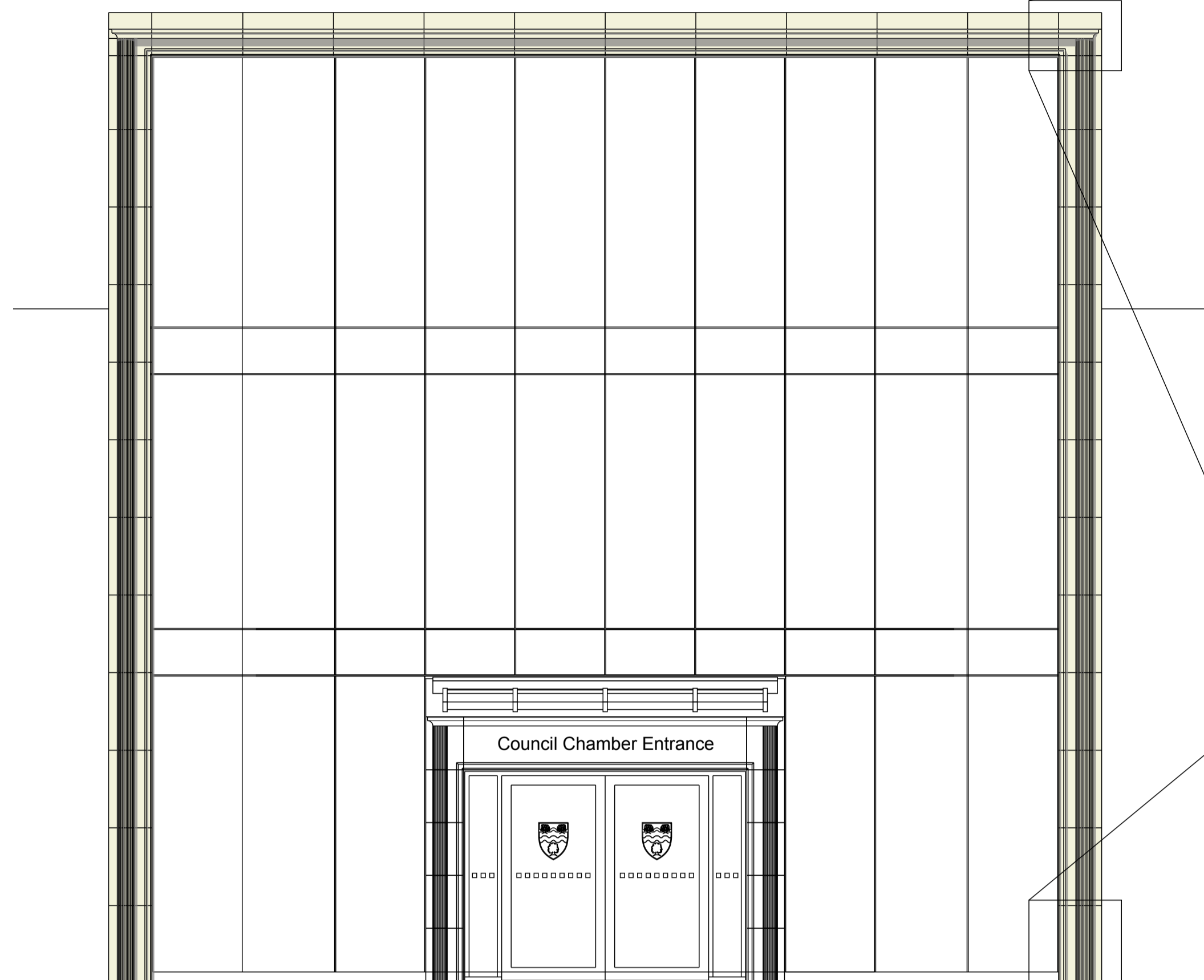


Notes

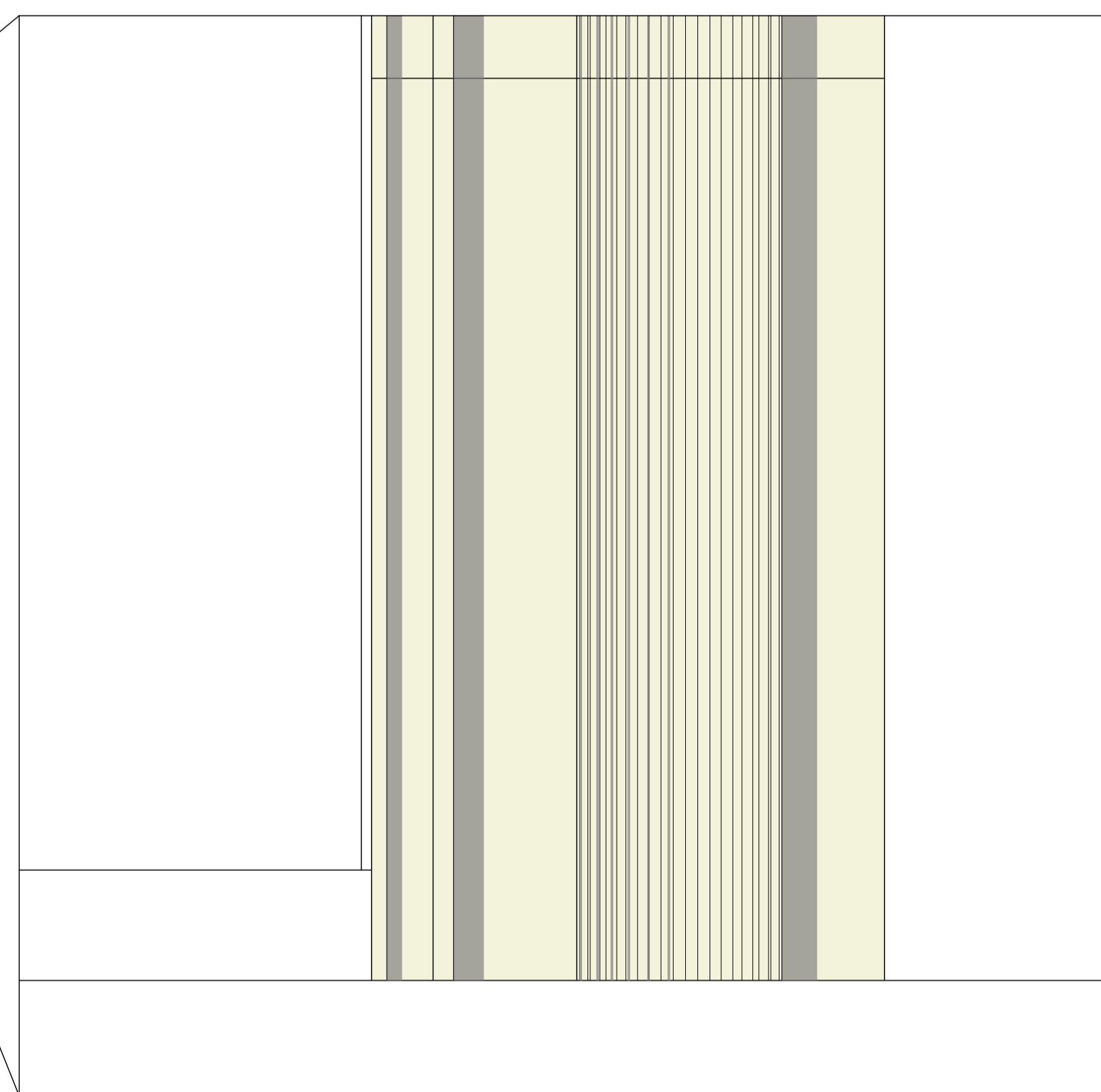
1. This drawing has been prepared in accordance with the scope of RPS's appointment with its client and is subject to the terms and conditions of that appointment. RPS accepts no liability for any use of this document other than by its client and only for the purposes for which it was prepared and provided.
2. If received electronically it is the recipient's responsibility to print to correct scale. Only written dimensions should be used.



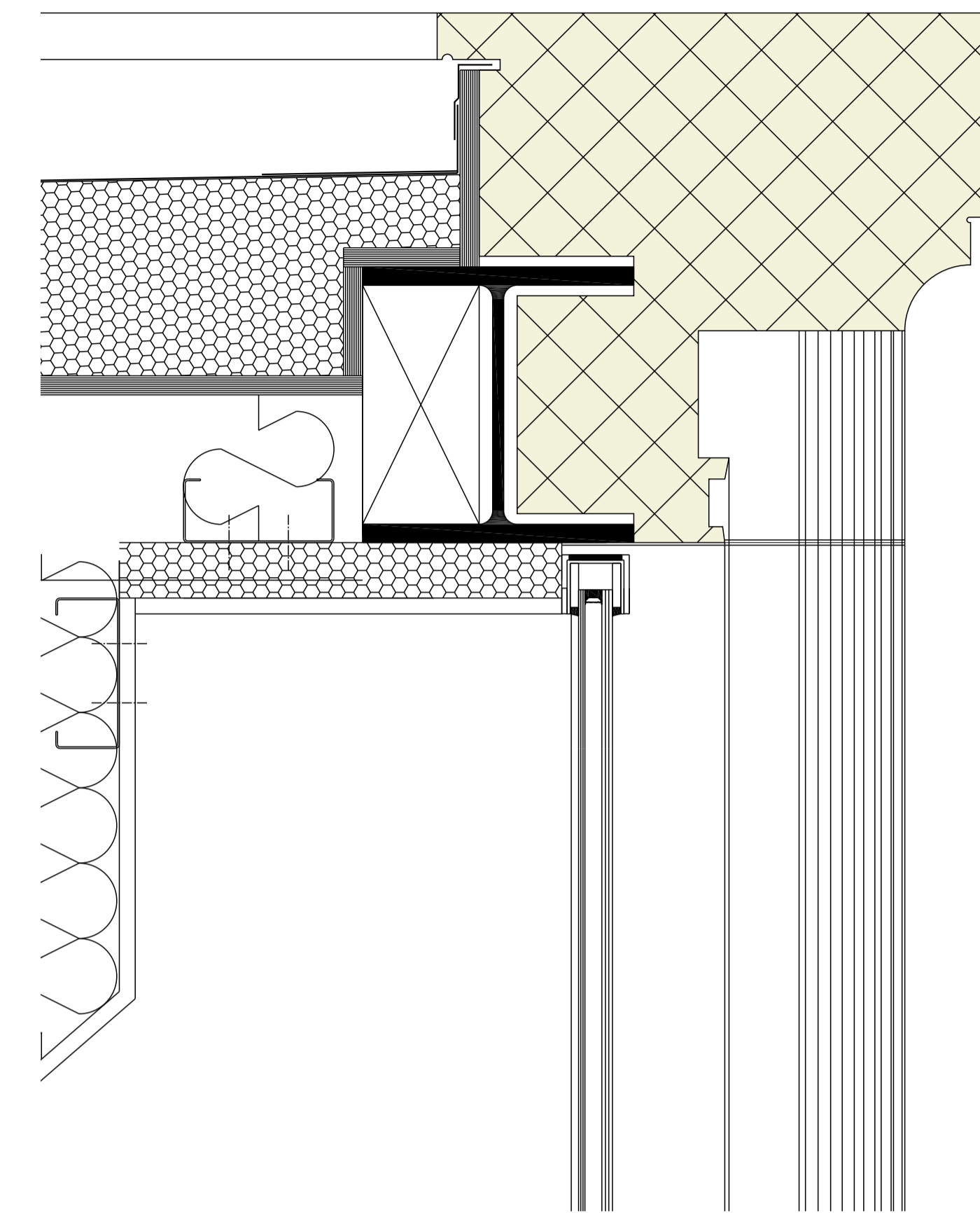
Front elevation of stonework entrance
Scale 1:50



Elevation detail - top of feature 1:5

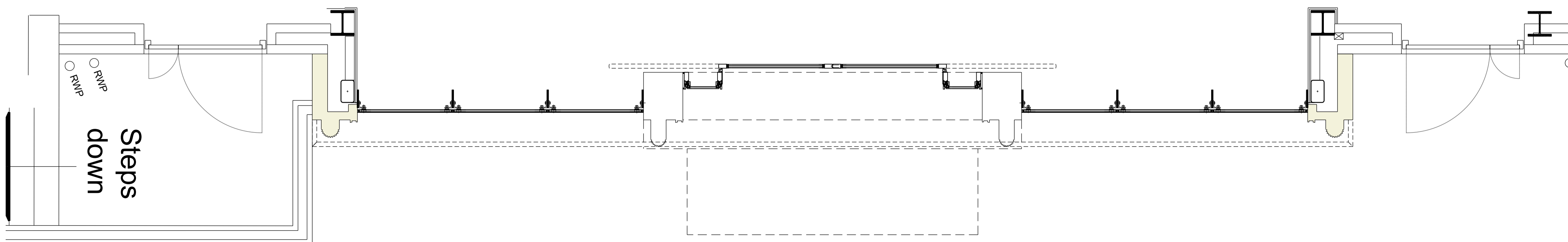
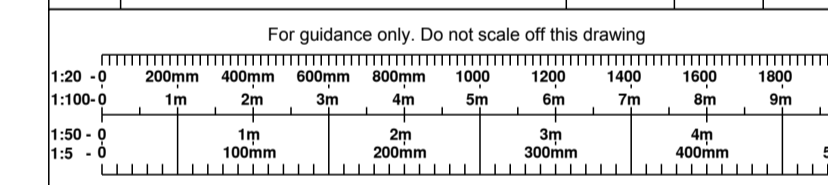


Elevation detail - base of feature 1:5



Section detail - top of feature 1:5

Rev	Description	Date	Initial	Checked
A	Drawing updated to show main entrance feature stone surround.	01/11/13	ACG	



Plan of Entrance
Scale 1:25



Highfield House, 5 Ridgeway
Quinton Business Park, Birmingham B32 1AF
T: +44(0)121 213 5500 E: rpsbm@rpsgroup.com F: +44(0)121 213 5502

Client Welwyn Hatfield Borough Council

Project Campus East

Title Proposed Entrance to
Council Chamber
Large Stone Surround
Detail Drawing

Status	Drawn By	PM/Checked by
Planning	ACG	-
Job Ref	Scale @ A1	Date Created
AAA5172	Varies	30-10-2013

Drawing Number	Rev
AAA5172-A-P1-032	A