

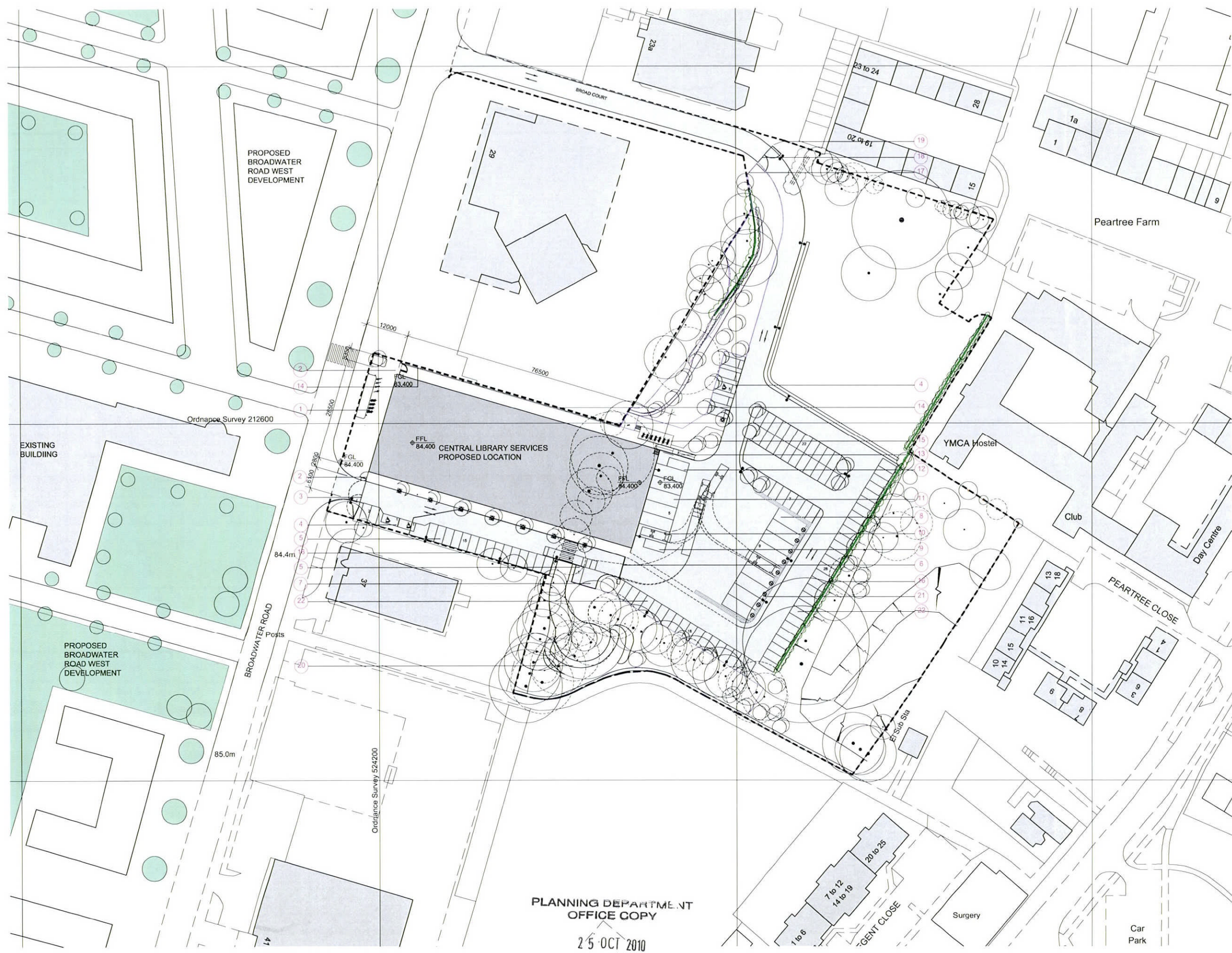


KEY

- 1 Visitors' bicycle parking
- 2 Pedestrian security gate
- 3 Site security gate
- 4 Disabled car parking
- 5 Visitors' car parking
- 6 Automated barrier
- 7 Turning head
- 8 Mobile library vehicles parking
- 9 Transit van vehicles
- 10 Service bay
- 11 Loading bays
- 12 Recycling container
- 13 Ramp
- 14 Staff cycle covered parking
- 15 Boundary wall / railings
- 16 Existing road / parking area
- 17 Proposed security fence
- 18 Proposed gate
- 19 Existing fence
- 20 Proposed swale
- 21 Proposed gabion screen
- 22 Staff car parking

- Site boundary
- Hedge retained
- Hedge removed
- Trees removed
- Trees retained
- Trees proposed
- vehicular surface within site

**PARKING BAYS**  
 Staff: 80 (including 5 disabled bays)  
 Visitors: 20 (including 2 disabled bays)  
 Mobile Library Vehicles: 9  
 Transit Van: 1  
 Service bays: 1  
 Loading Bays: 5  
 Waste/Recycling Container: 1  
 Bicycles (visitors): 8  
 Bicycles (staff): 14 sheltered (3 sides + roof)



PLANNING DEPARTMENT  
OFFICE COPY

25 OCT 2010

2010/2467

0 10 20 30 40 50M

Scale for planning purposes only

**Mace Group**  
 Stag House  
 Old London Road  
 Hertford  
 SG13 7TY  
 Telephone 01992 515100  
 Facsimile 01992 515111  
 www.macegroup.com

**Hertfordshire**

PROJECT WELLYN GARDEN CITY BROADWATER ROAD Central Library Services	DATE June 2010
PROPOSED SITE LAYOUT	SCALE 1:500 @ A1/1:1000 @ A2
DESIGNED BY LMGM	CHECKED BY LMGM
DATE 1957	SCALE A103
C	