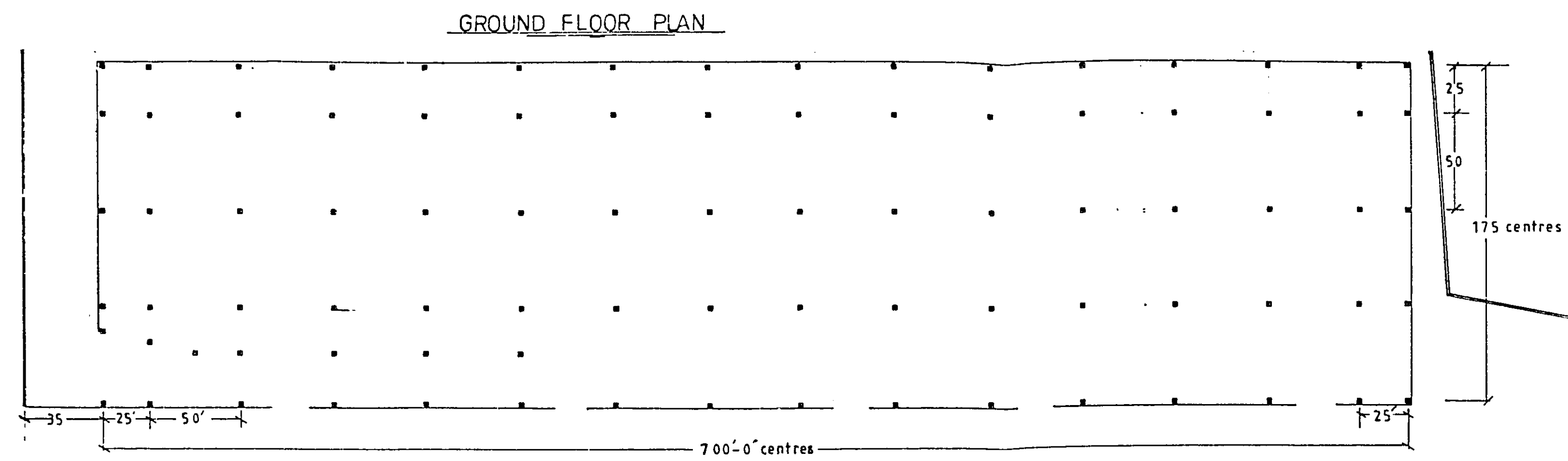


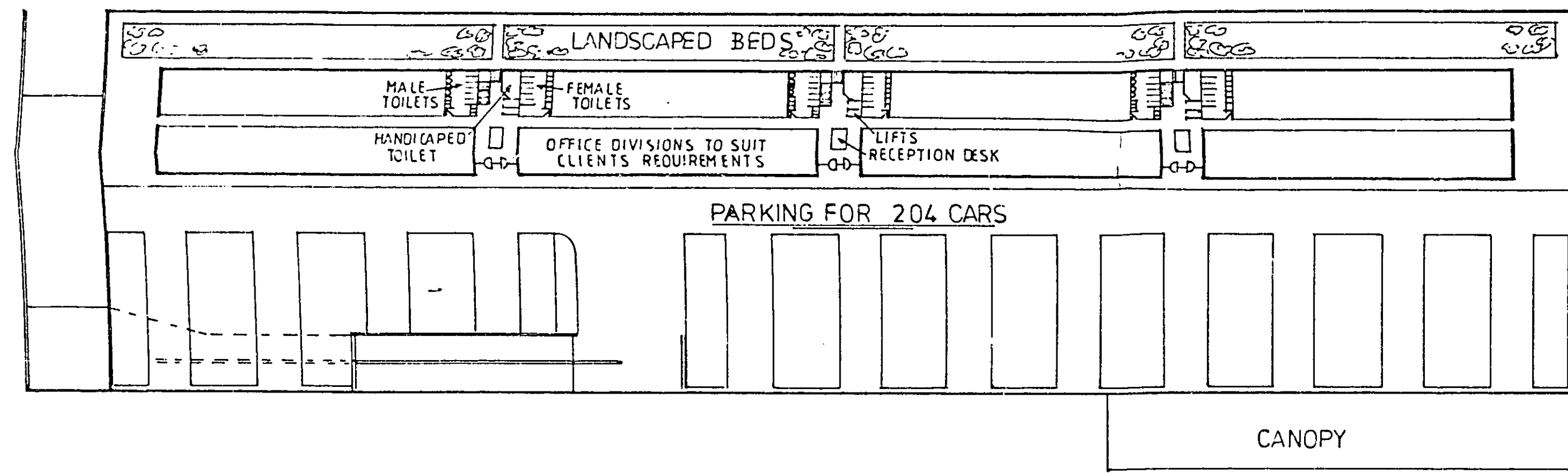
C6/668/84

OFF BRIDGE RD W.G.C

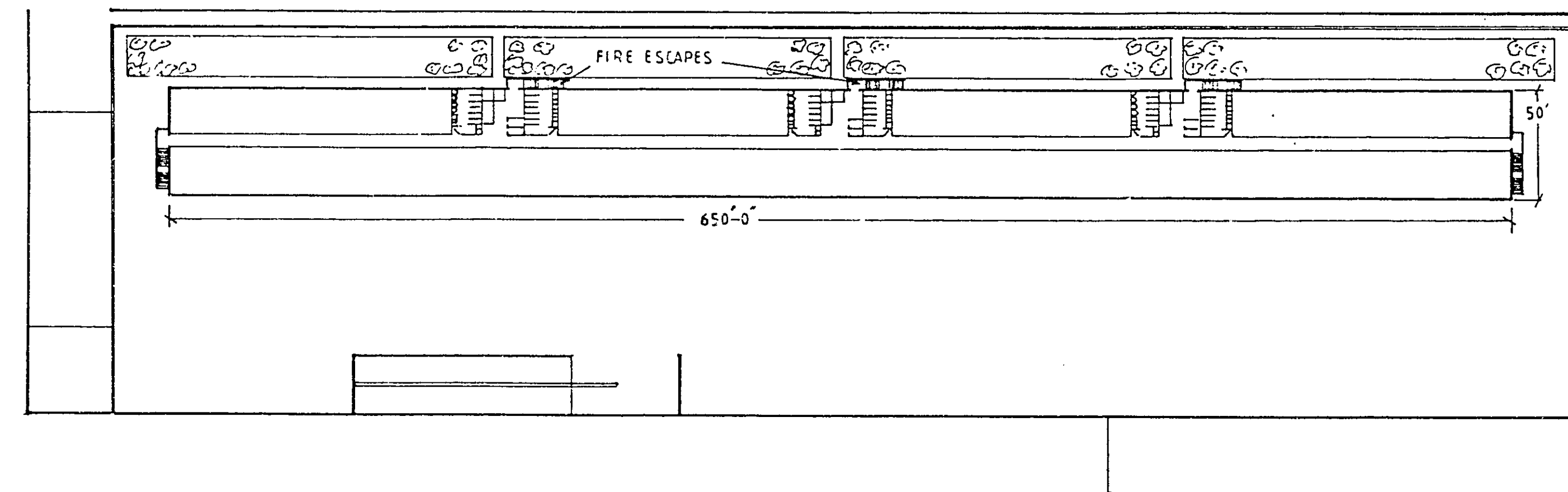
2/2



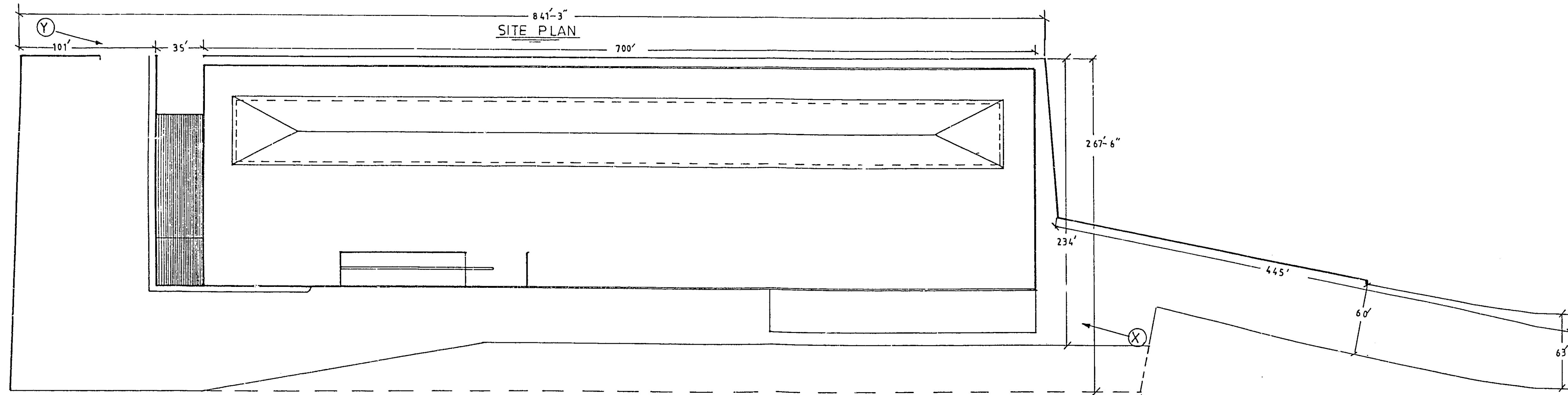
FIRST FLOOR PLAN WITH OFFICE GROUND FLOOR PLAN & CAR PARKING AREA



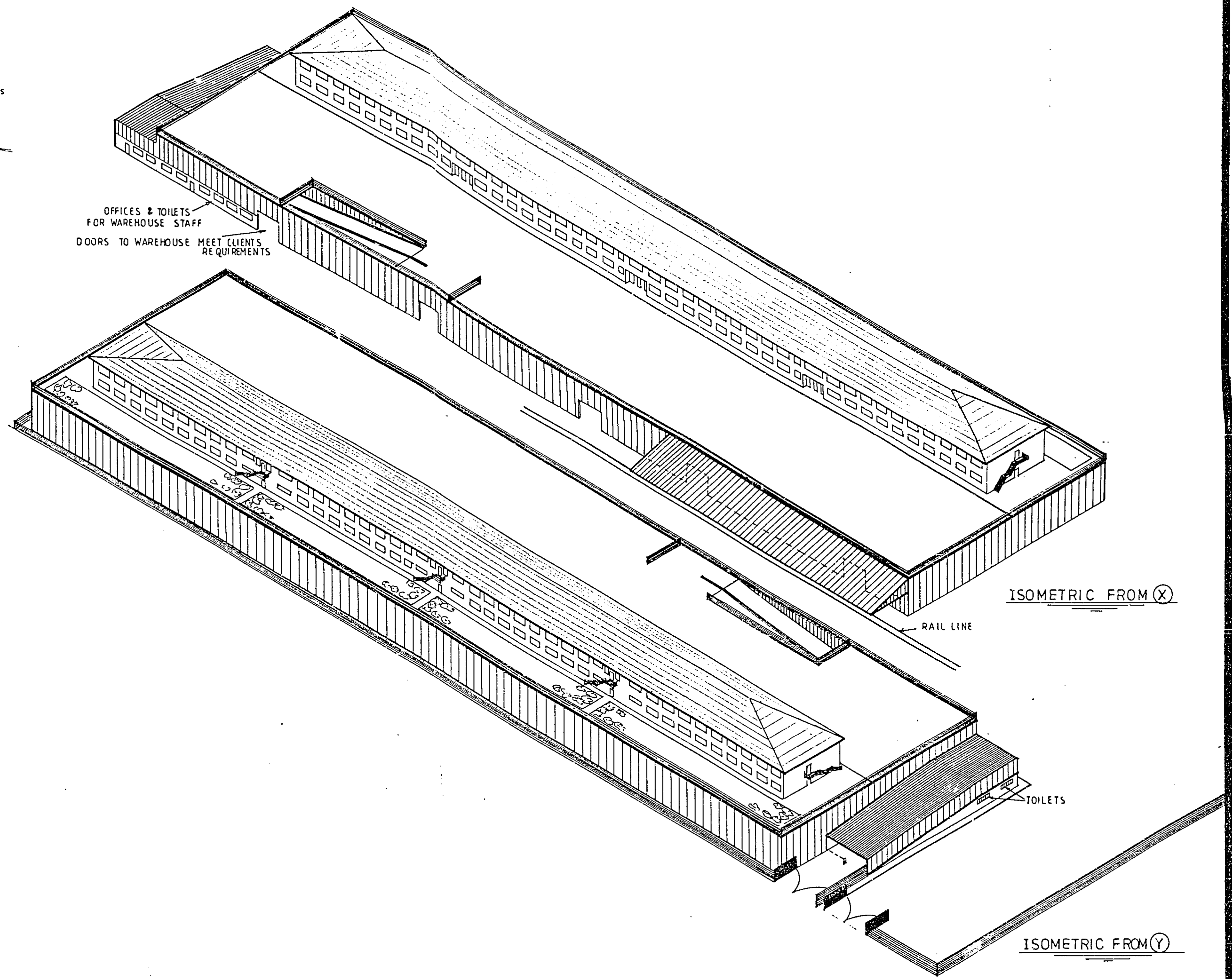
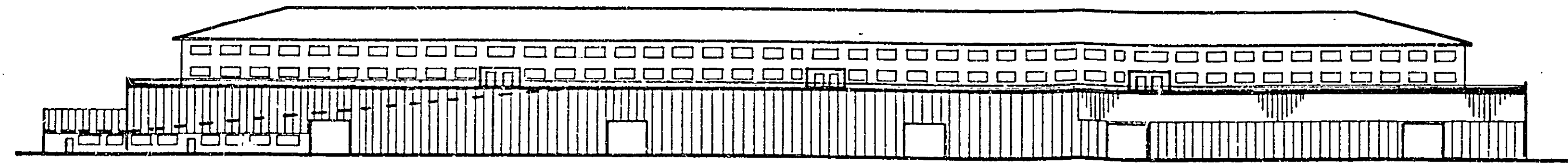
OFFICES SECOND FLOOR PLAN



SITE PLAN



SIDE ELEV



PROPOSED DEVELOPMENT AT WELWYN GARDEN CITY  
 OF A 123,500 sq ft (11,475 m<sup>2</sup>) WAREHOUSE WITH RAIL & ROAD CONNECTION  
 4,000 sq ft (370 m<sup>2</sup>) OF OFFICES TOILETS ETC FOR WAREHOUSE STAFF  
 COVERED RAMP WITH A 1:10 GRADIENT TO ROOF TOP CAR PARK FOR MAIN OFFICES  
 ROOF TOP CAR PARK FOR 204 CARS  
 OFFICE BLOCK ABOVE WAREHOUSE = 2 STOREY  
 65,000 sq ft (5,575 m<sup>2</sup>)  
 THREE ENTRANCES WITH RECEPTION DESKS  
 LIFTS & STAIRCASES  
 APPROPRIATE TOILET FACILITIES  
 OFFICE DIVISION TO MEET CLIENT NEEDS  
 FIRE ESCAPES & FACILITIES AS APPROPRIATE  
 WAREHOUSE CLEAR HEIGHT 29'-0"  
 36'-0" WIDE CANOPY 225' LONG OVER RAIL LINE

DEVELOPERS :- T. P. DIBDIN, LTD. P. O. BOX 40  
 NORMANBY ROAD,  
 SCUNTHORPE, SOUTH HUMBERSIDE. DN 15 8 RQ  
 TEL: 0724 282020

DRAWN BY :- J. I. PAYNE, O.B.E. N.D.AGR.E. F.I.AGR.E.  
 CLIFTON HOUSE, 3 DARELL ROAD, CAVERSHAM HEIGHTS,  
 READING. RG4 7AY TEL 0734 474567

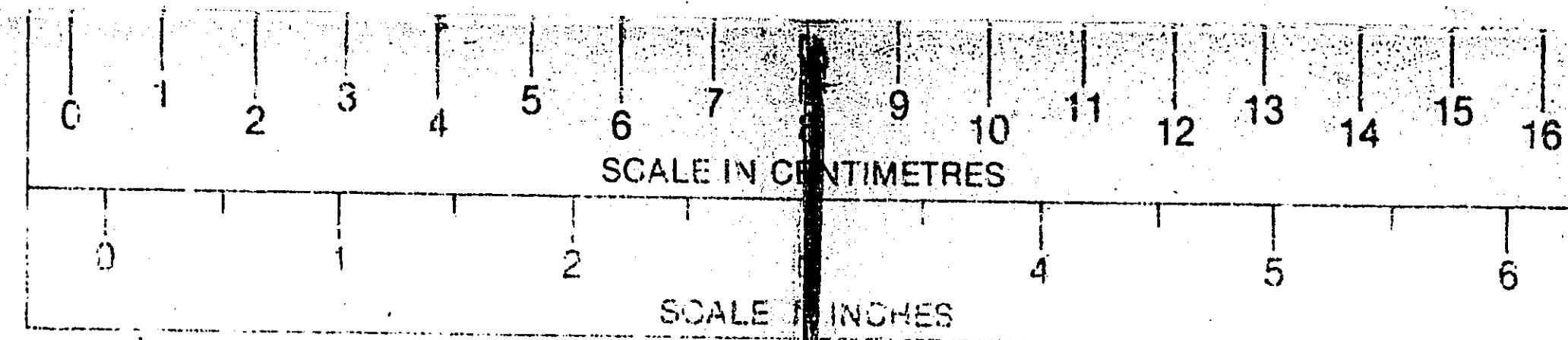
DRAWING No WELWYN COMPOSITE 3 DATE:- 1-1-90

A2

A3

A4

A4

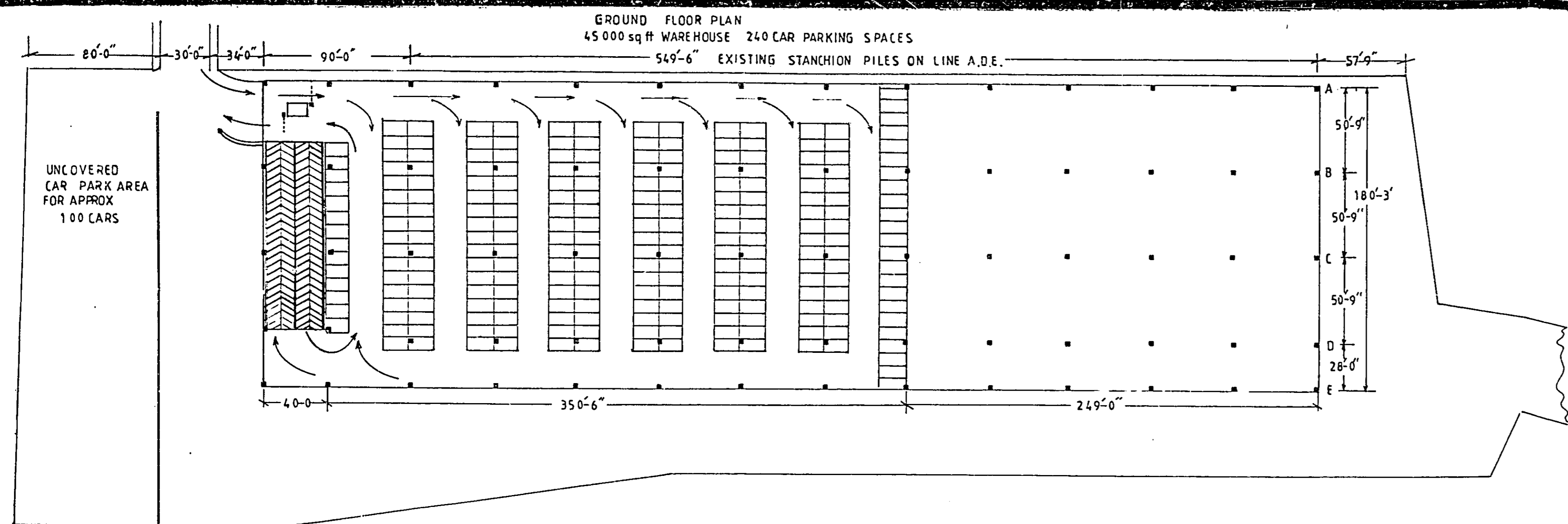


A4

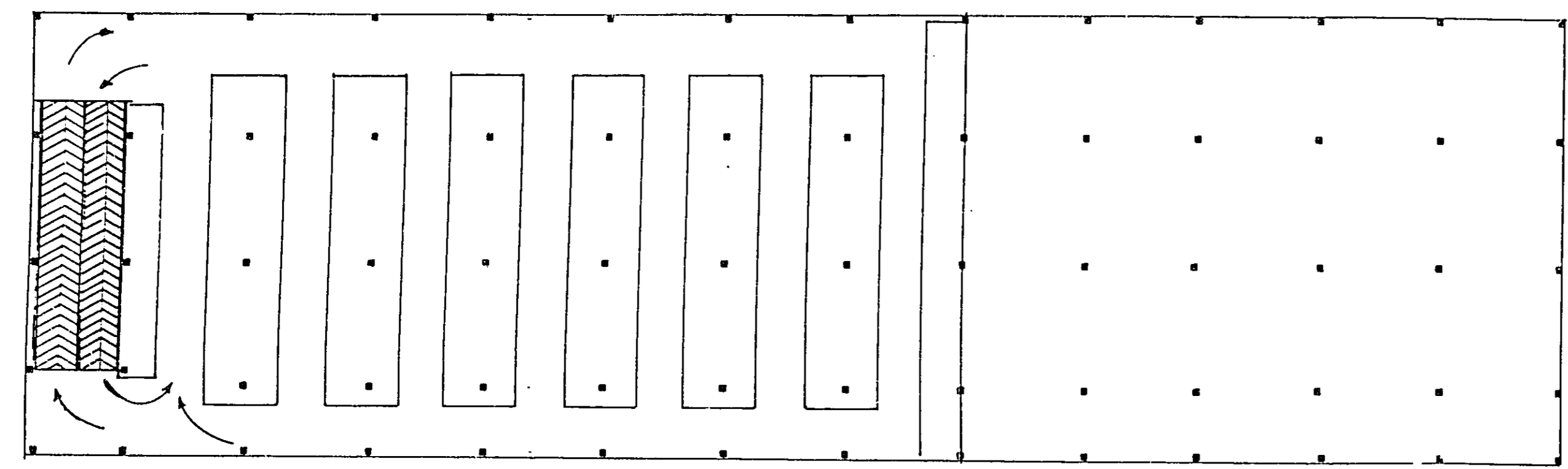
A4

A3

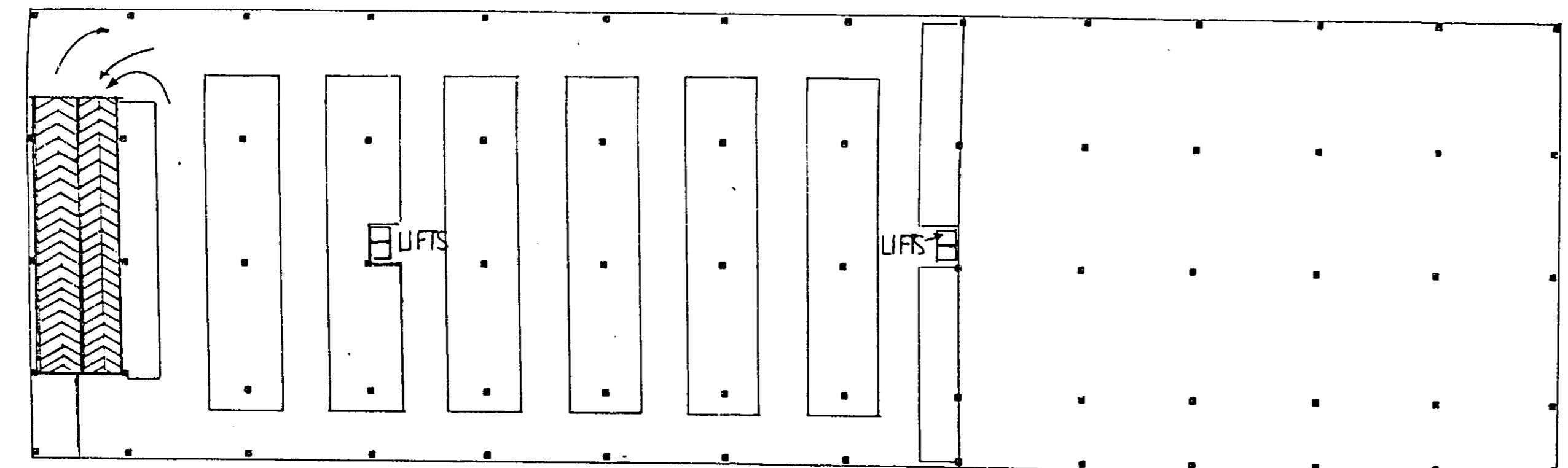
A2



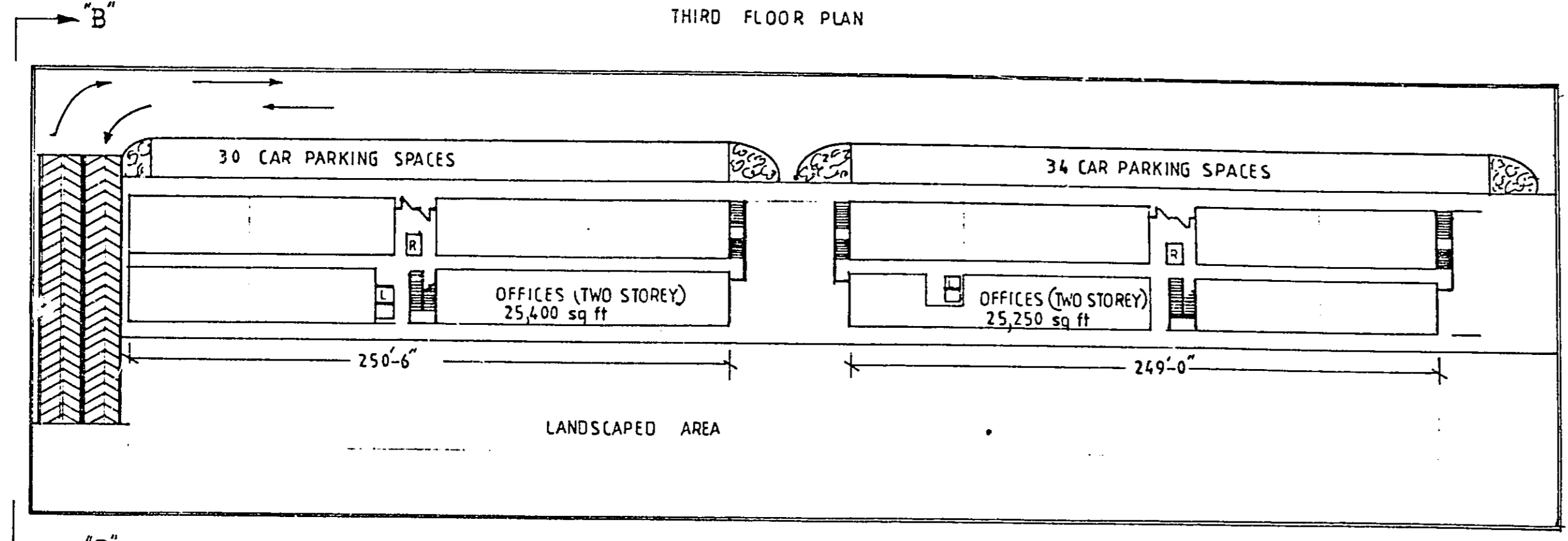
FIRST FLOOR PLAN  
240 CAR PARKING SPACES



SECOND FLOOR PLAN  
240 CAR PARKING SPACES AND LIFTS TO OFFICES

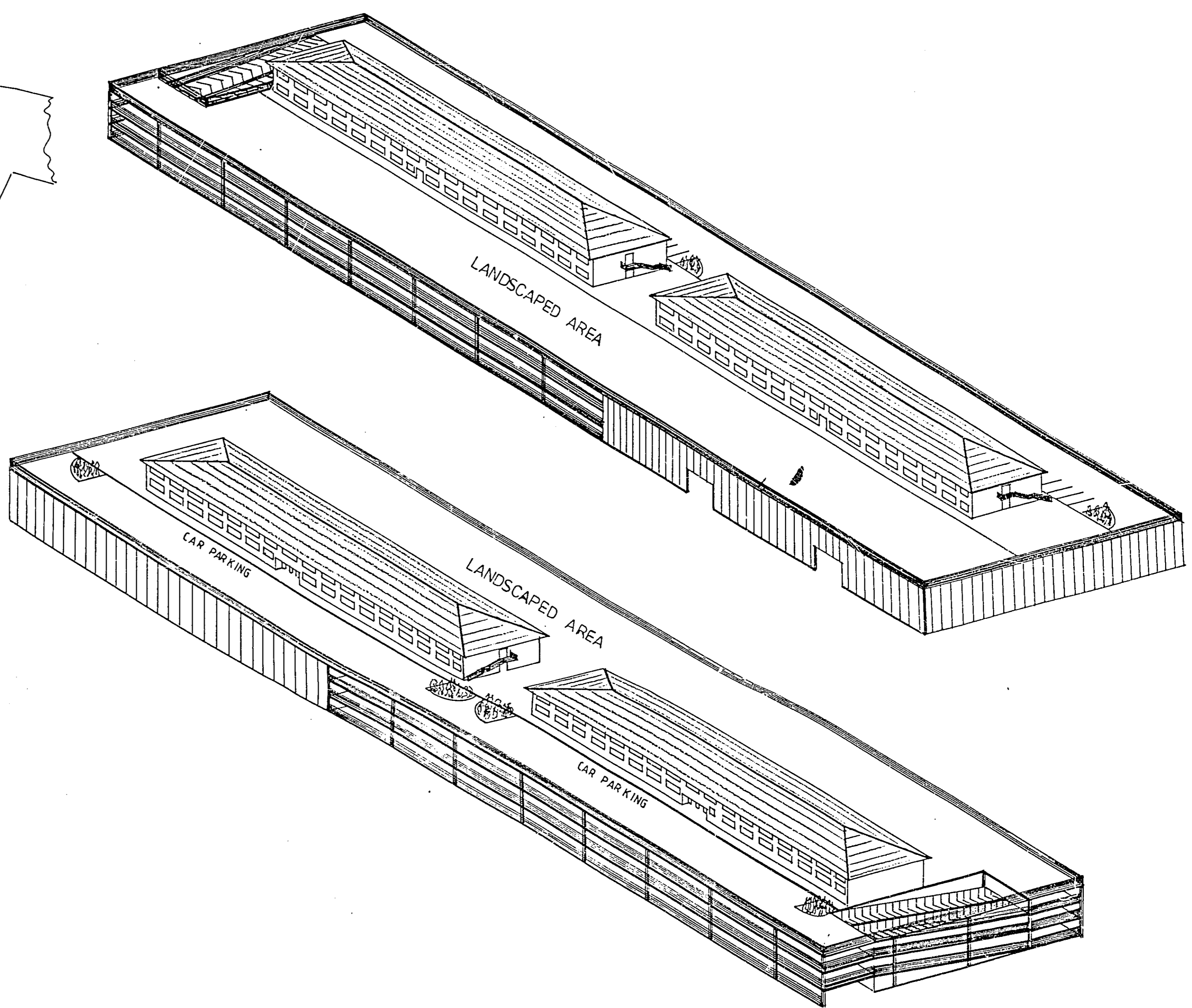


THIRD FLOOR PLAN



SIDE ELEV "A-A"

END ELEV "B-B"



PROPOSED DEVELOPMENT AT WELWYN GARDEN CITY  
 OF A 45,000 sq ft (4,180 m<sup>2</sup>) WAREHOUSE RAIL & ROAD CONNECTED WITH NOMINAL CLEAR HEIGHT 29'-8 8/50  
 480 COVERED CAR PARKING SPACES FOR COMMUTERS  
 100 UNCOVERED CAR PARKING SPACES FOR COMMUTERS  
  
 50,650 sq ft 4,705 m<sup>2</sup> OF OFFICES IN TWO BLOCKS OF 2 STOREY  
 240 DESIGNATED CAR PARKING SPACES ON SECOND FLOOR OF CAR PARK  
 ACCESS TO OFFICES FROM CAR PARK TO BE DIRECT BY LIFTS AND INDIRECT BY STAIRCASES  
 CAR PARK BY CARD OPERATED GATE AND REMOTE TELECOM FOR VISITORS  
 64 CAR PARK SPACES FOR VISITORS AT OFFICE LEVEL  
 STAIRCASES AND OTHER ACCESS eg FOOTBRIDGE TO BE AGREED

DEVELOPERS :- T. P. DIBDIN LTD, P.O. BOX 40  
 NORMANBY ROAD, SCUNTHORPE, SOUTH HUMBERSIDE. DN 15 8 R Q  
 TEL: 0724 282020

DRAWN BY :- J. I. PAYNE, O.B.E. N.D.AGR. E. F.I.AGR. E.  
 CLIFTON HOUSE, 3 DARELL ROAD, CAVERSHAM HEIGHTS, READING. RG4 7AY  
 TEL: 0734 474567

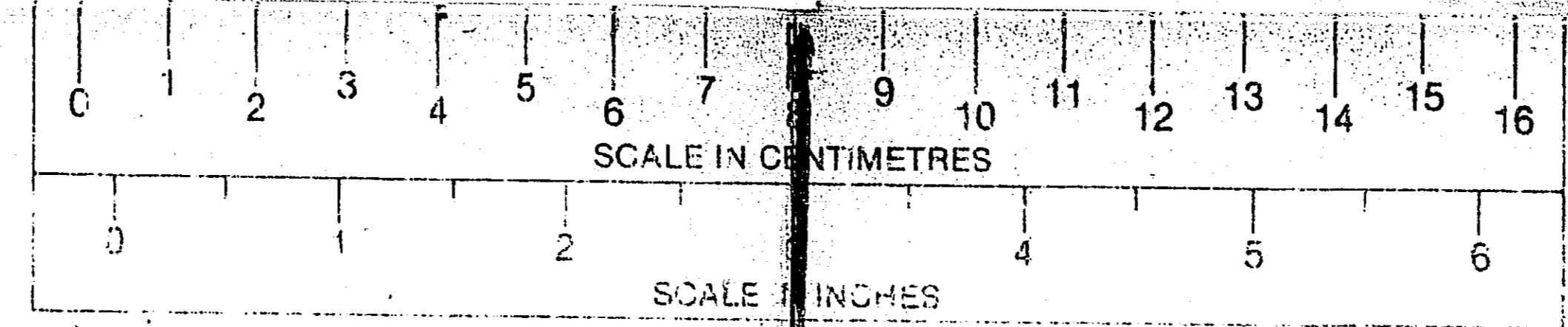
DRAWING :- No WELWYN COMPOSITE 4 DATE: 18-1-90

A2

A3

A4

A4



A4

A4

A3

A2



OFFICE COPY  
 WHDC  
 6/668/84  
 Received 14/8/85

ACCEPTED AS  
 AMENDMENT

WHDC BY  
 TPC PROPLAN REFERRED  
 TO IN CONSENT  
 DATED 14/8/84

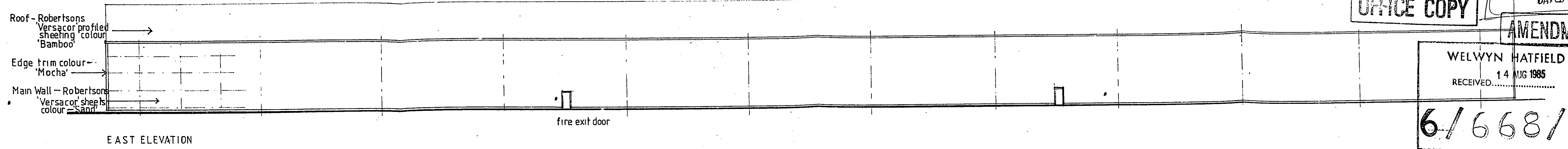
OFFICE COPY  
 AMENDMENT

WELWYN HATFIELD D.C.  
 RECEIVED 14 AUG 1985

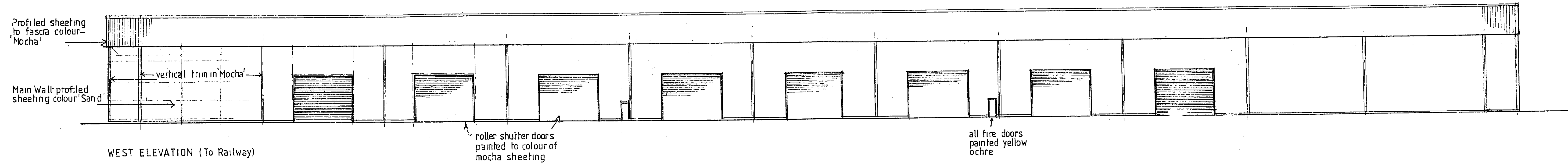
6/668/84

WELWYN HATFIELD D.C.  
 TOWN & COUNTRY PLANNING ACT 1971  
 PLAN REFUSED TO IN CONSENT REFUSAL

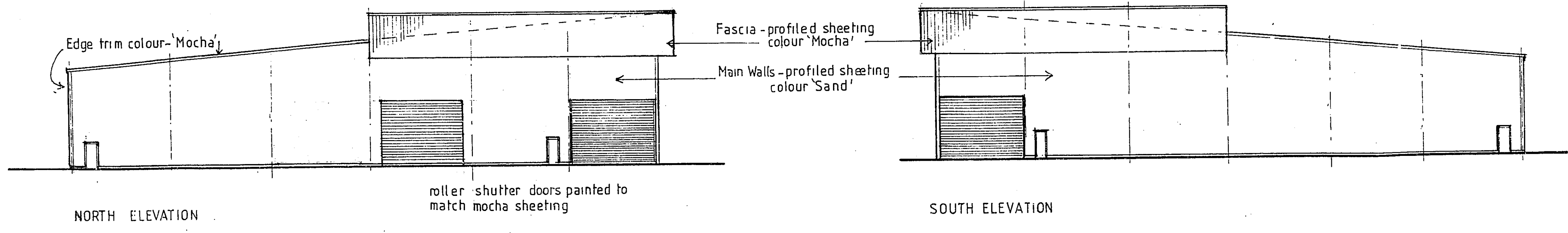
Date: 4 DEC 1984



EAST ELEVATION



WEST ELEVATION (To Railway)



NORTH ELEVATION

SOUTH ELEVATION

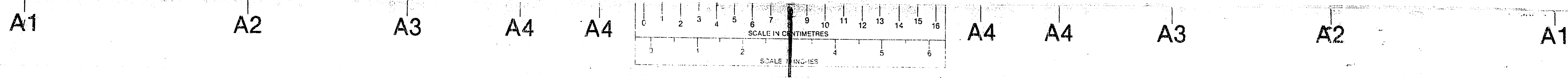
Revised Elevational  
 Treatment-2

PROPOSED RAIL FREIGHT  
 TERMINAL AT WELWYN  
 GARDEN CITY, HERTS.  
 for  
 T. P. DIBDIN Ltd.

DAVID E. KEARLEY PIRA  
 Chartered Architect  
 1 Ploagills Buildings  
 Sheep Street, Watlington,  
 Northants, NN16 0AN  
 Tel. Kettering (0533) 515237

Scale 1:250 Date July 1985 Drawn K

Drawing No 8306B/20



OFFICE COPY

WELWYN HATFIELD D.C.

RECEIVED 16/7/85

CG/668/84

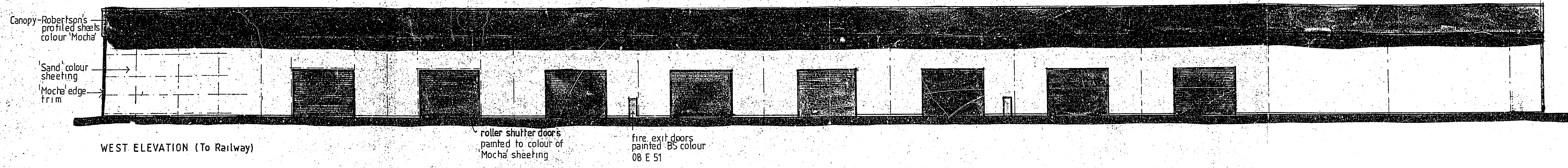
AMENDMENT

corner trim colour Mocha

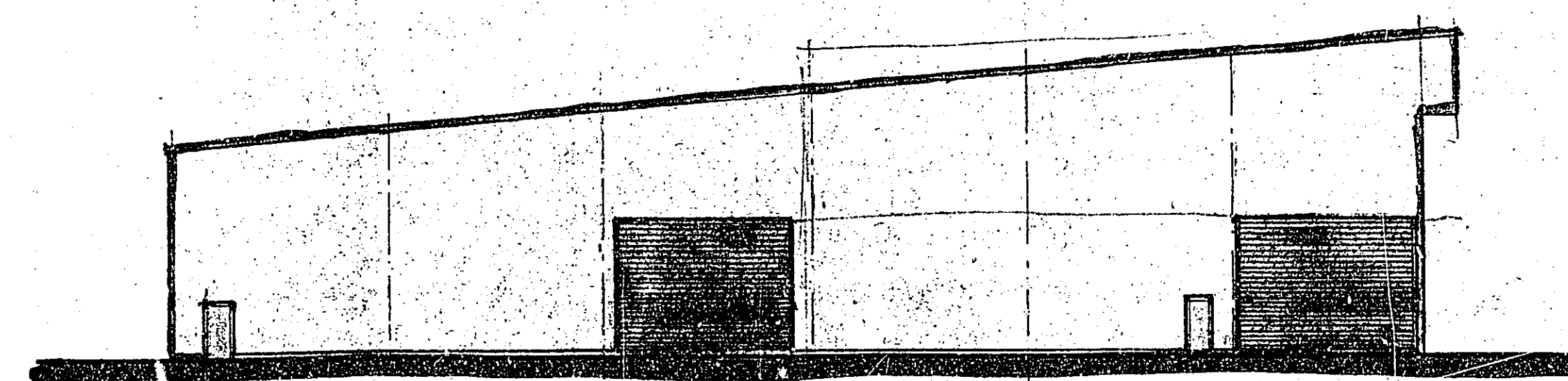


EAST ELEVATION

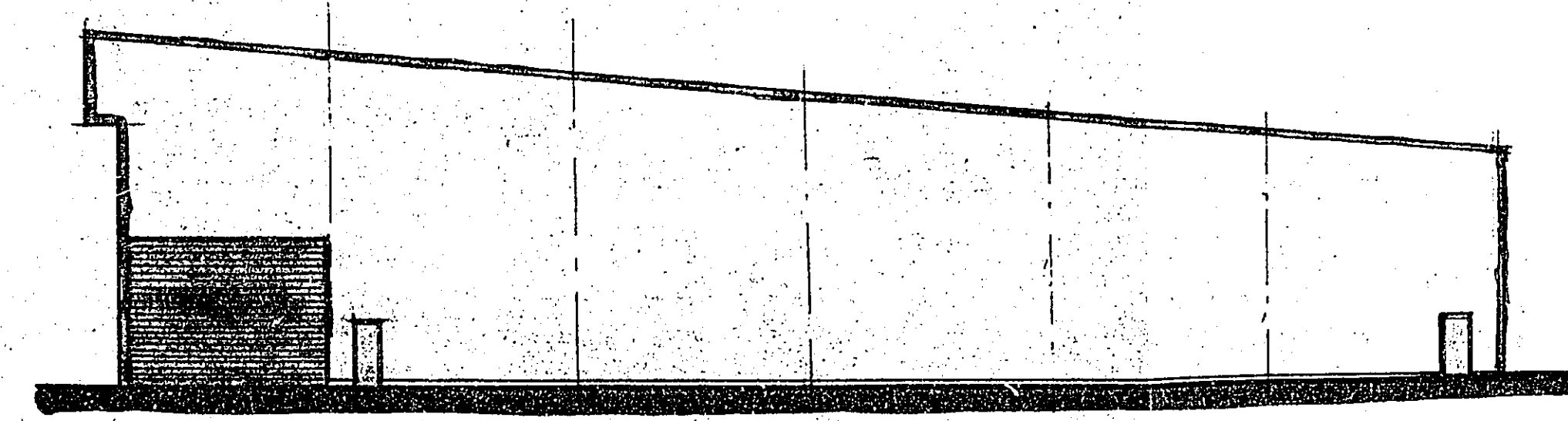
*Design not accepted as amendment. See drawing no 8306B/20*



WEST ELEVATION (To Railway)



NORTH ELEVATION



SOUTH ELEVATION

Revised Elevational Treatment-2  
Also Colour Scheme

PROPOSED RAIL FREIGHT TERMINAL AT WELWYN GARDEN CITY, HERTS. for T. P. DIBDIN Ltd.

DAVID E M KEARLEY RIBA  
Chartered Architect  
1 Piccadilly Buildings  
Sheep Street, Kettering,  
Northants, NN16 0AN  
Tel. Kettering (0536) 515231

Scale 1:250 Date July 1985 Drawn K

Drawing No 8306B/20

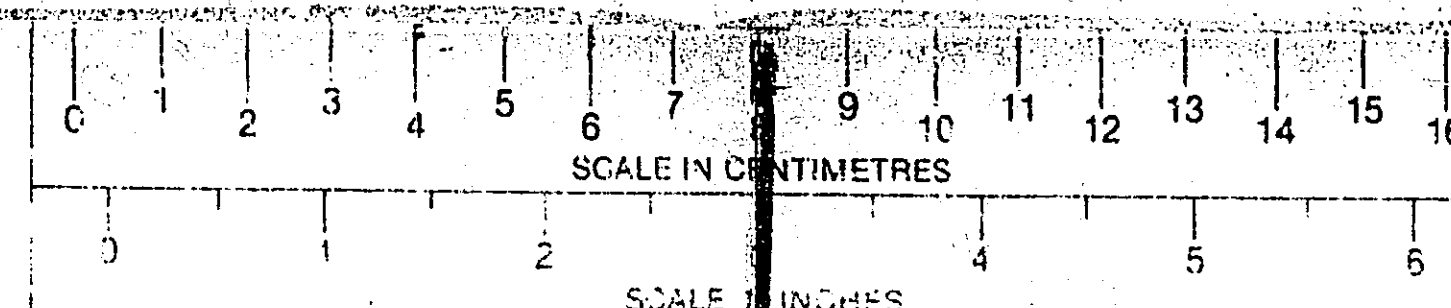
A1

A2

A3

A4

A4



A4

A4

A3

A2

A1