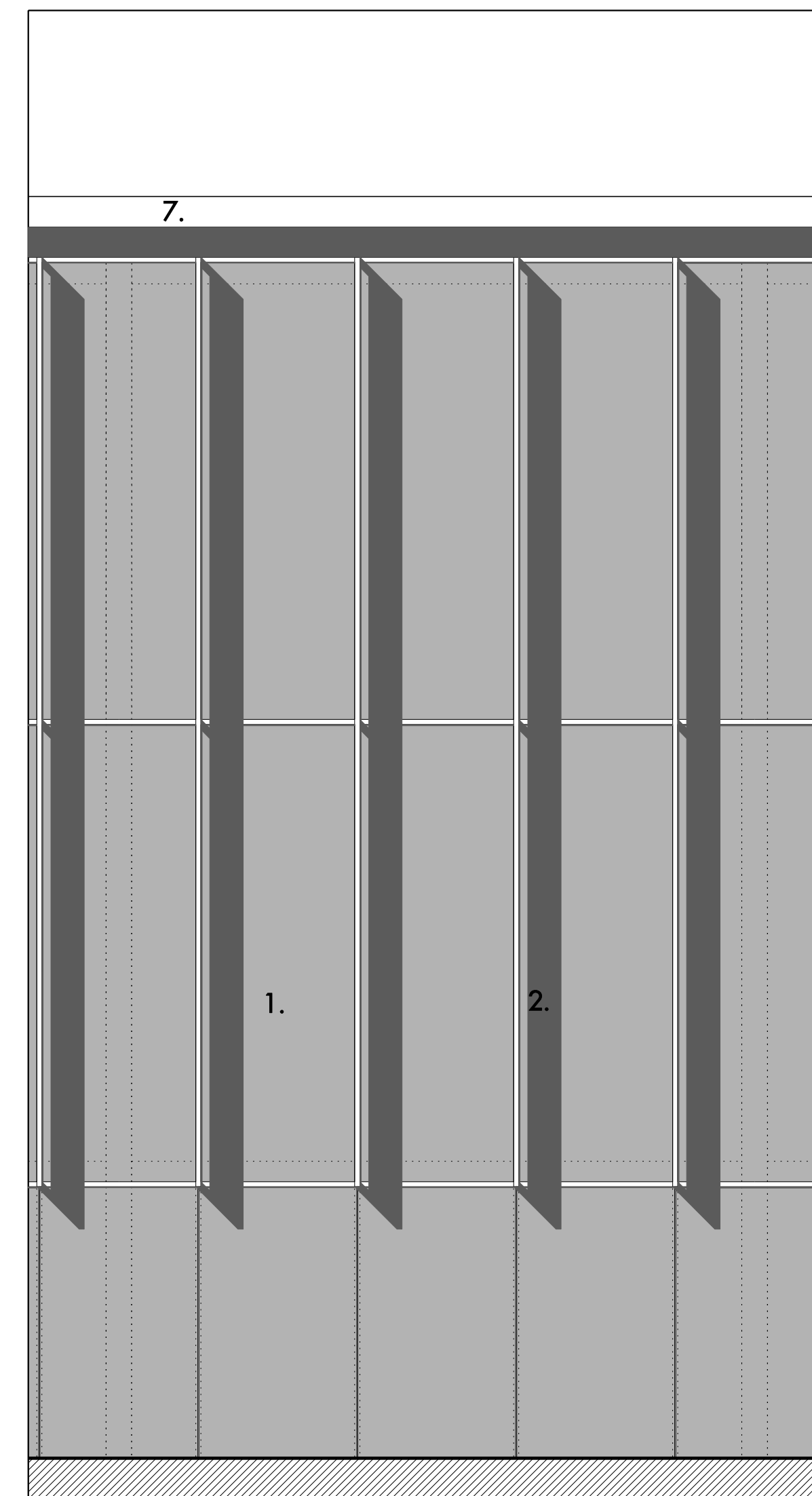
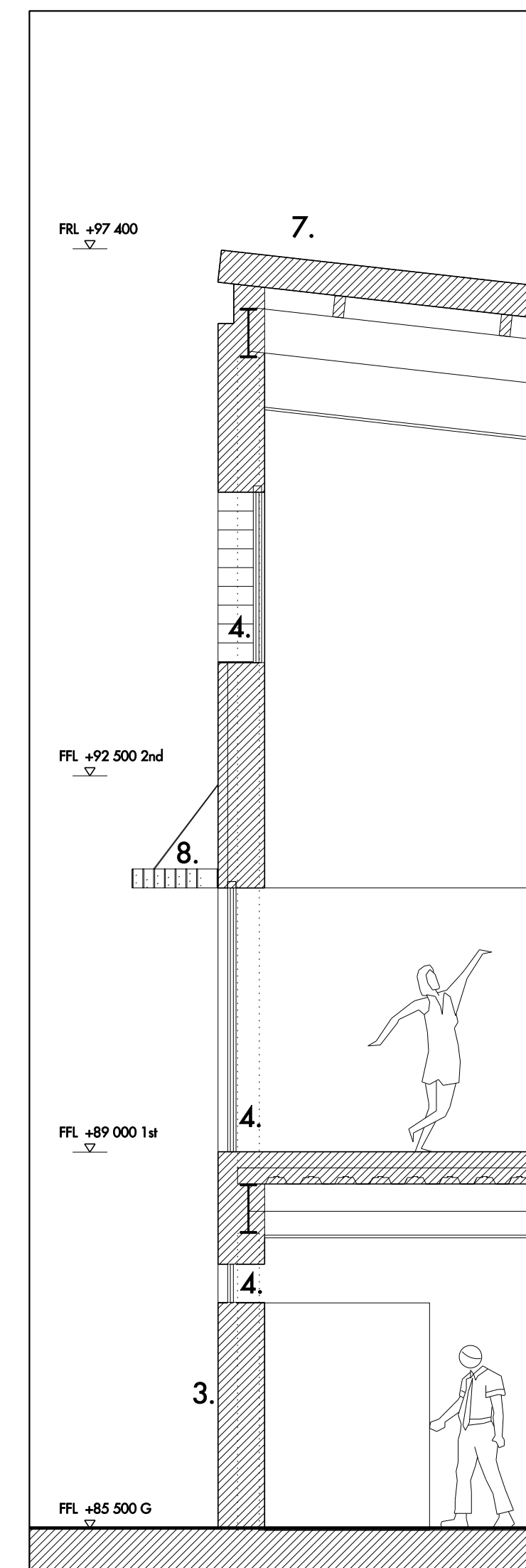


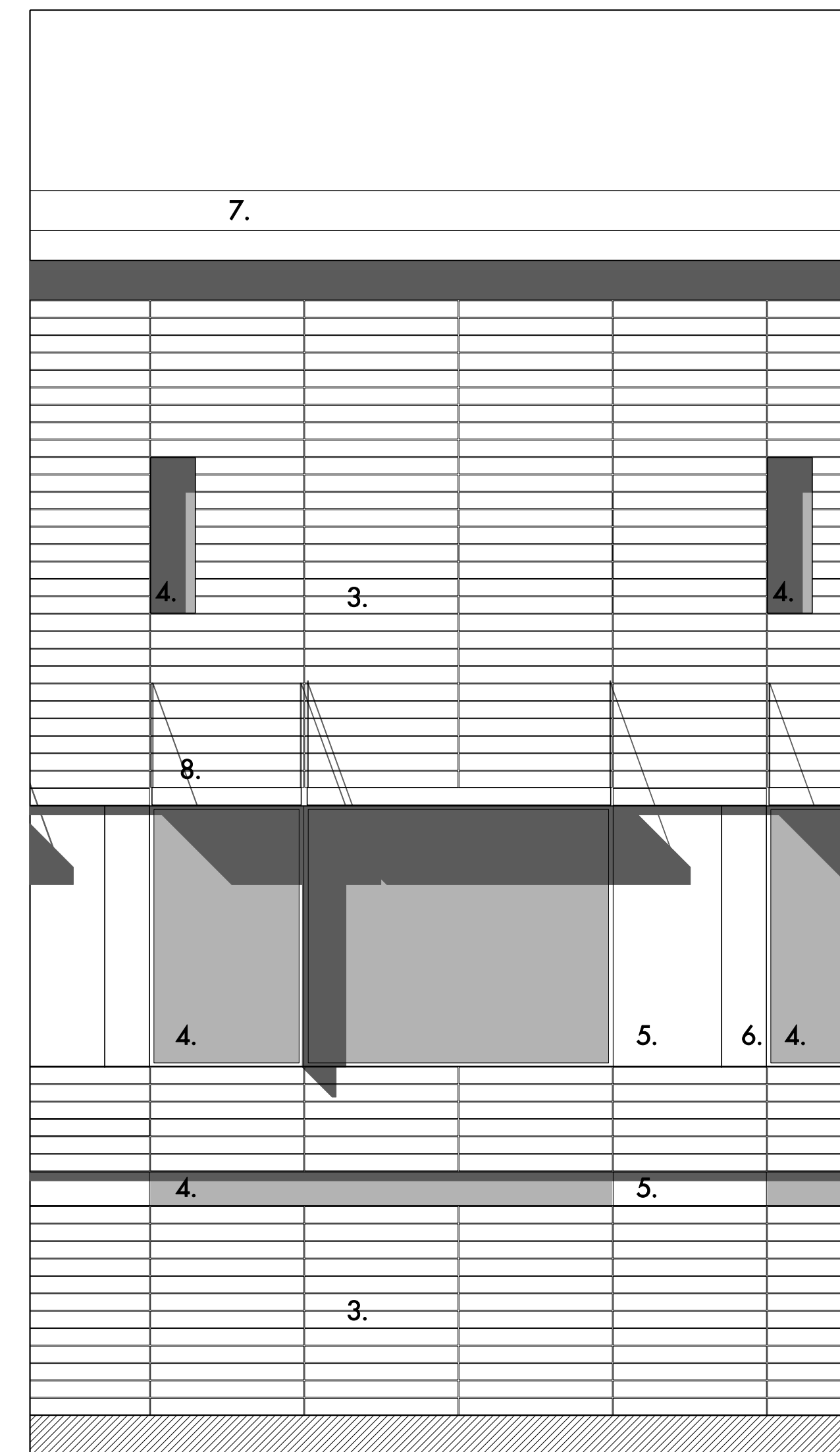
SECTION



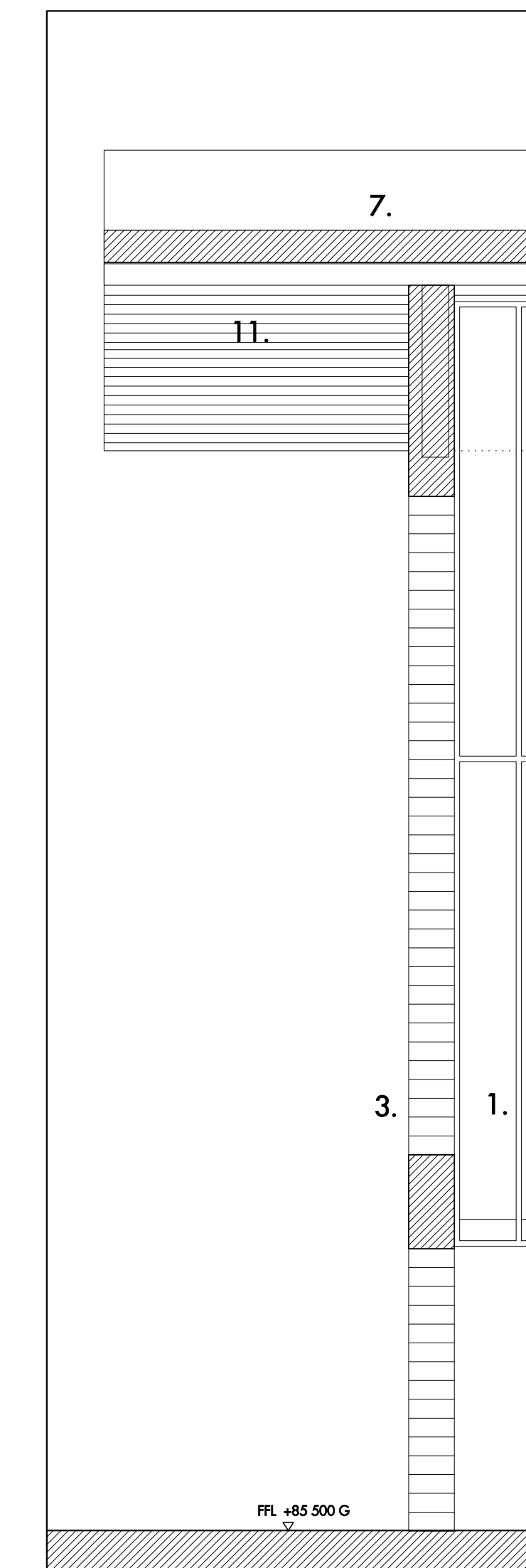
PART EAST ELEVATION



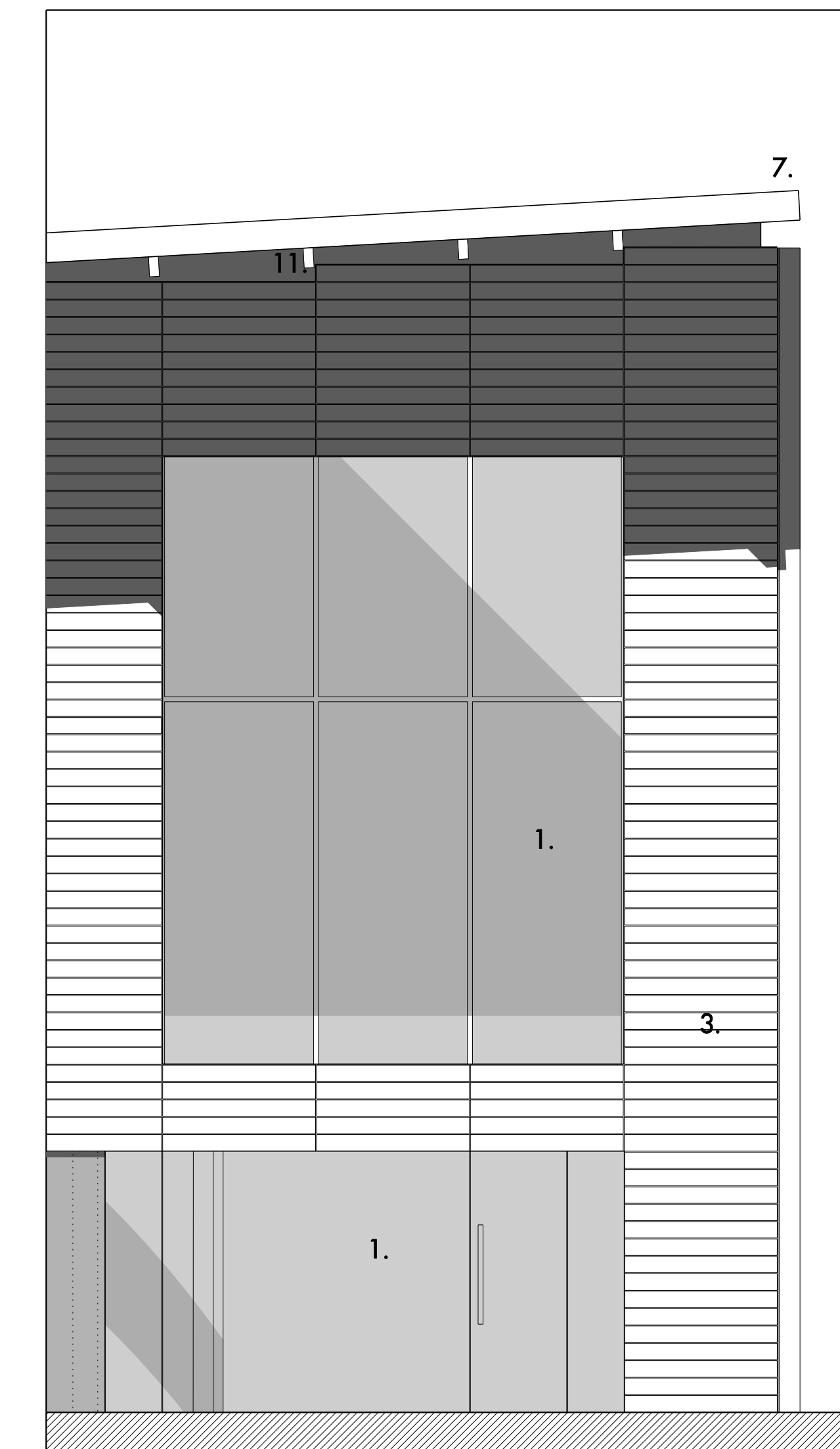
SECTION



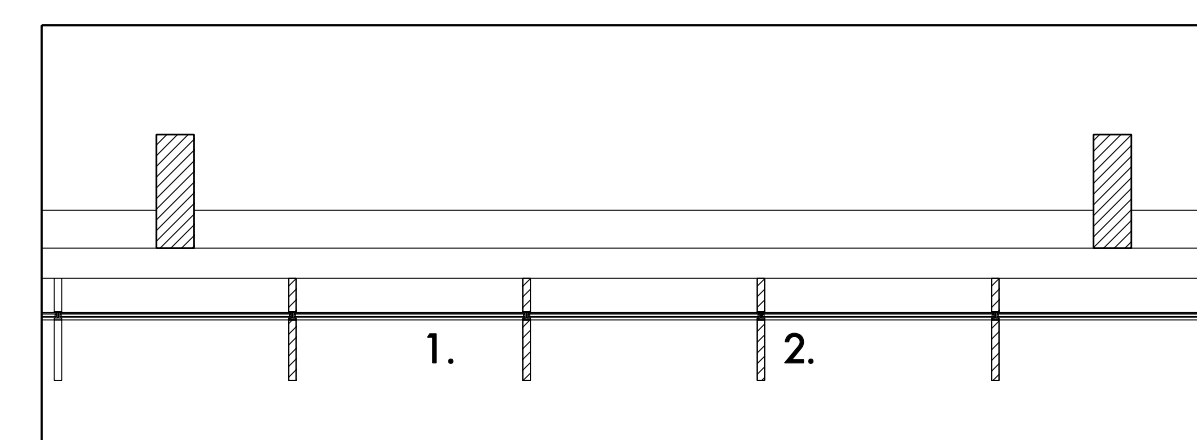
PART WEST ELEVATION



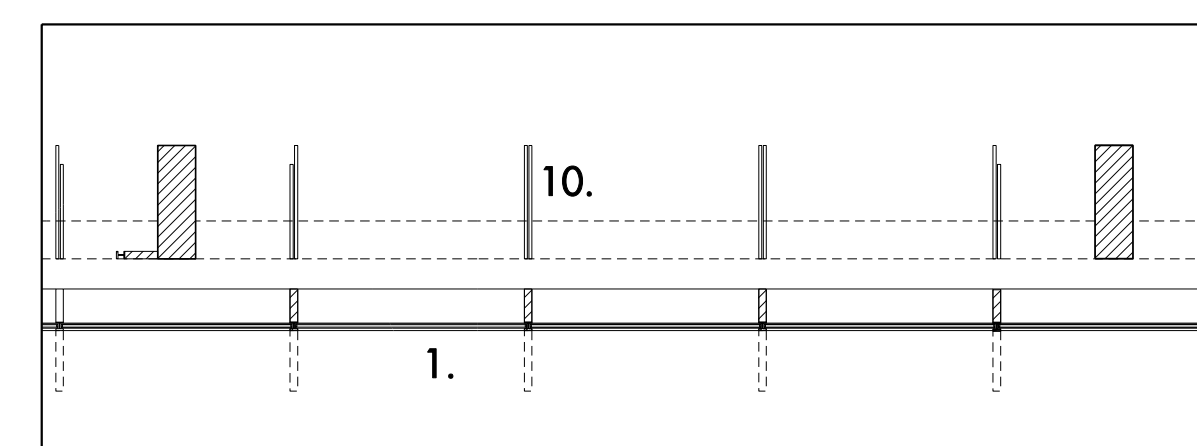
SECTION



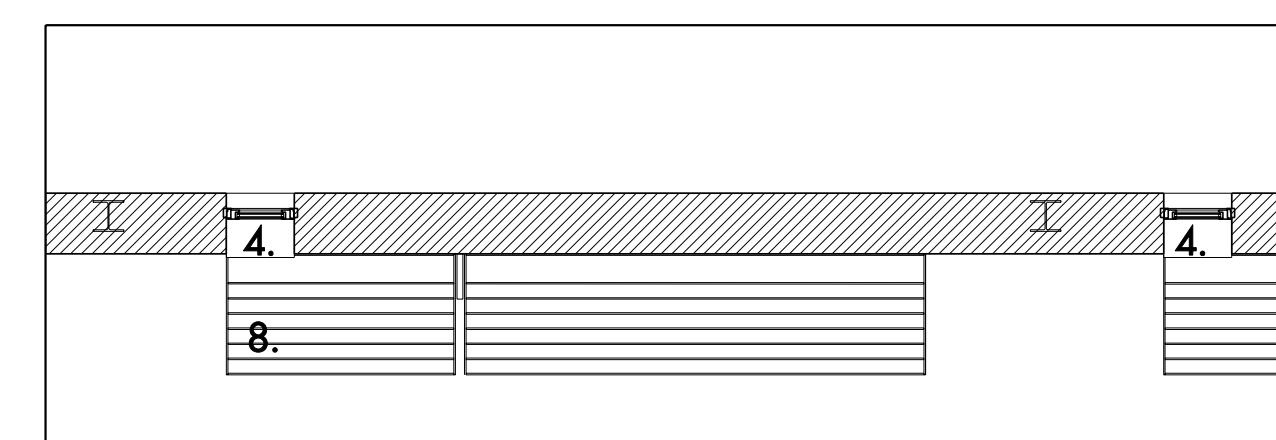
PART SOUTH ELEVATION (ENTRANCE)



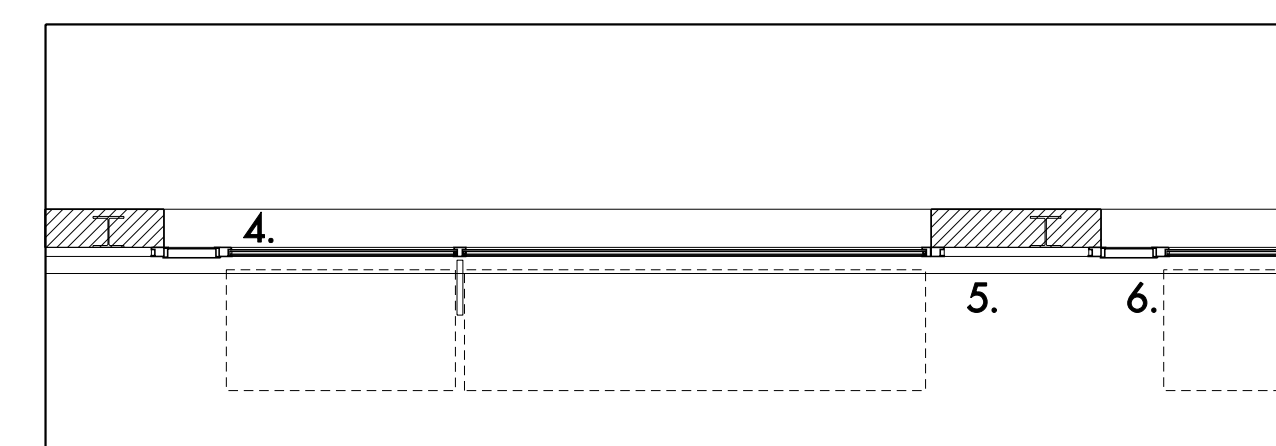
UPPER LEVELS PLAN



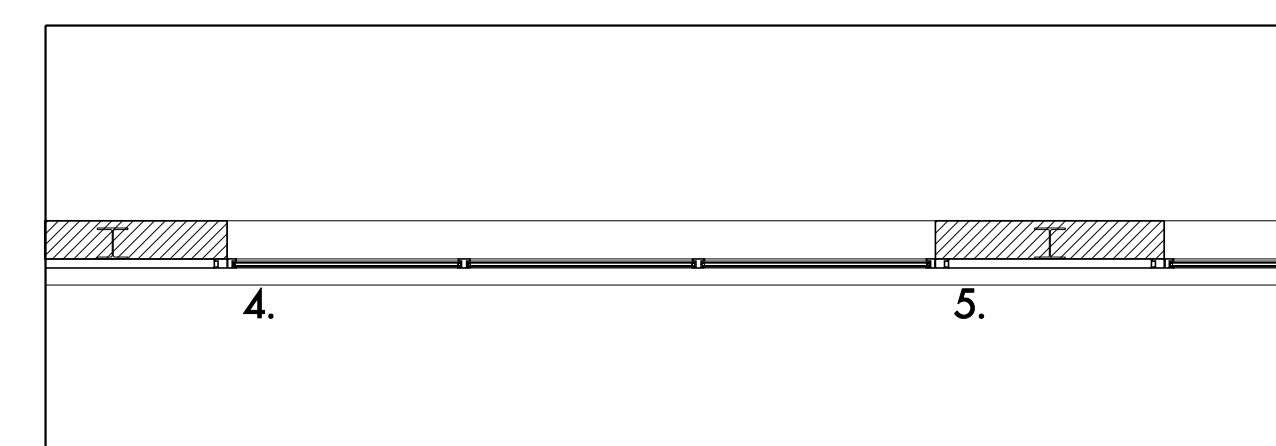
GROUND FLOOR PLAN



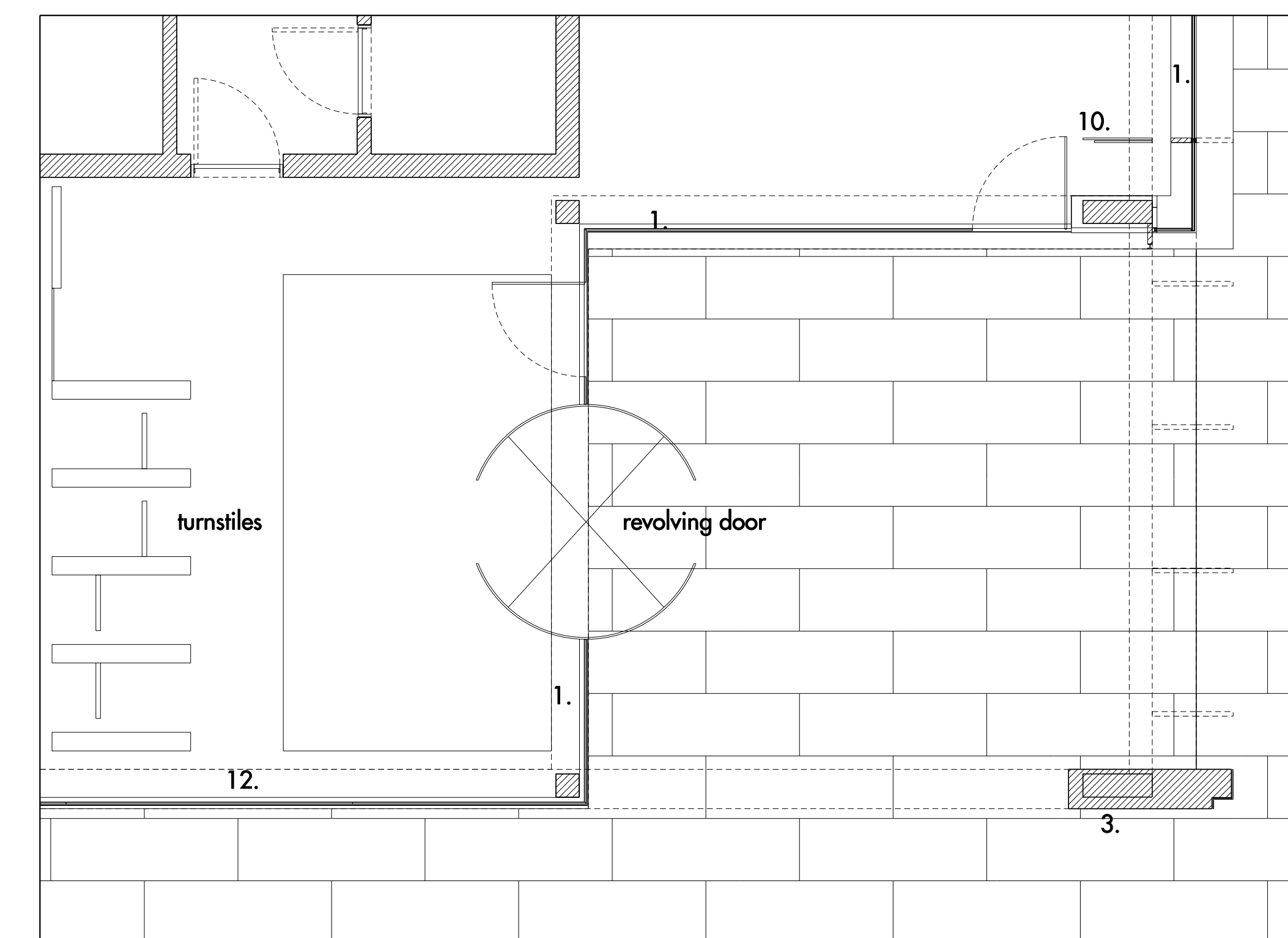
SECOND FLOOR PLAN



FIRST FLOOR PLAN



GROUND FLOOR PLAN



GROUND FLOOR PLAN

- KEY
1. structural curtain walling
 2. vertical metal fin
 3. grey terracotta rainscreen cladding
 4. double glazed window unit
 5. metal panel
 6. opening metal vent
 7. metal roof with metal coping
 8. horizontal metal louvre
 9. metal clad escape doors
 10. perforated metal screens
 11. timber purlins
 12. shop glazing



For planning purposes only.

REV	DATE	DESCRIPTION	REV	DATE	DESCRIPTION	REV	DATE	DESCRIPTION	REV	DATE	DESCRIPTION	REV	DATE	DESCRIPTION
A	12/09/2010	ISSUE FOR APPLICATION	B											

Allies and Morrison
 85 Southwark Street
 London SE1 0JH
 telephone 020 7921 0100
 facsimile 020 7921 0101
 email info@alliesandmorrison.co.uk
 JOB NO: 568

BROADWATER ROAD WEST, WELWYN GARDEN CITY
 DETAILED PROPOSALS: LEISURE CENTRE (BUILDING A)
 PROPOSED BAY STUDIES
 568_07_230
 SCALE: 1:50 @A0 1:100 @A2

A
 revision