

The Bridge

8 The Bridge

The existing bridge

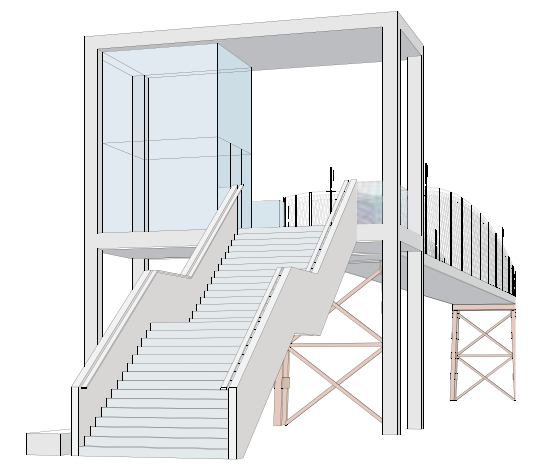
The existing footbridge forms a continuous high level pedestrian route connecting the Welwyn station platforms with east Welwyn on one side and west Welwyn on the other. From the station covered stairs lead to a covered section of the bridge running perpendicular to the north-south rail lines. This leads directly to the Howard Centre on the west. The east end of the covered section leads onto a more open bridge with a concrete deck and latticed steel girder sides resting on splayed steel piers. This is subdivided into four separate parts; the two central ones are arched and the others are straight. The final straight section leads to a steel staircase running at right angles to the bridge alighting at the western end of Hyde Way.

The proposed bridge

The existing bridge and steps would take pedestrians over the proposed Internal Spine Road and directly into the main square. Our scheme proposes to cut the bridge short by two sections and then to alight within the proposed small square to the west of the Spine Road. This has the advantage of reducing the length of the raised walkway and increasing the activity within that space. The first two western bridge sections will remain as they stand with their supporting piers. At the last pier a new structure is proposed with a flight of steps leading directly from the walkway. To one side, framed by a steel structure, is a lift which gives access to the ground and to the other is a ticket machine. The material for the decking and steps is precast concrete and the balustrade and lift enclosure is glass with metal handrails. The new Bridge will be entirely DDA and Part 'M' Building Regulations compliant.



Photograph of existing bridge



View of the proposed bridge