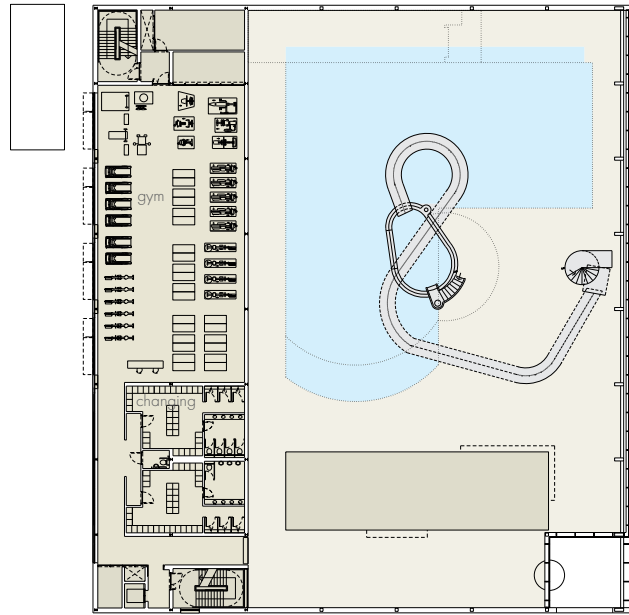
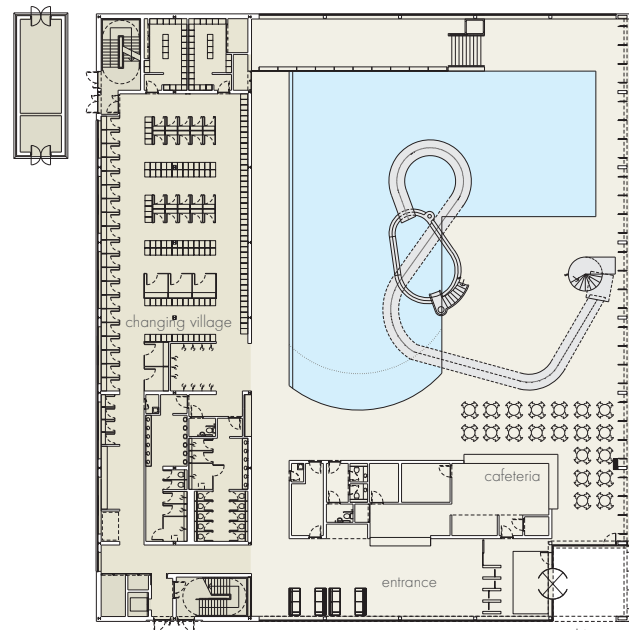


## 6 The Leisure Centre



First floor plan leisure centre



Ground floor plan leisure centre

### Plans

Situated to the west of the public square and adjacent to the approach over the railway bridge the leisure centre is a prominent building. It provides a popular public facility within the Redevelopment and its proximity to the Civic Square is key to attracting people to the new development.

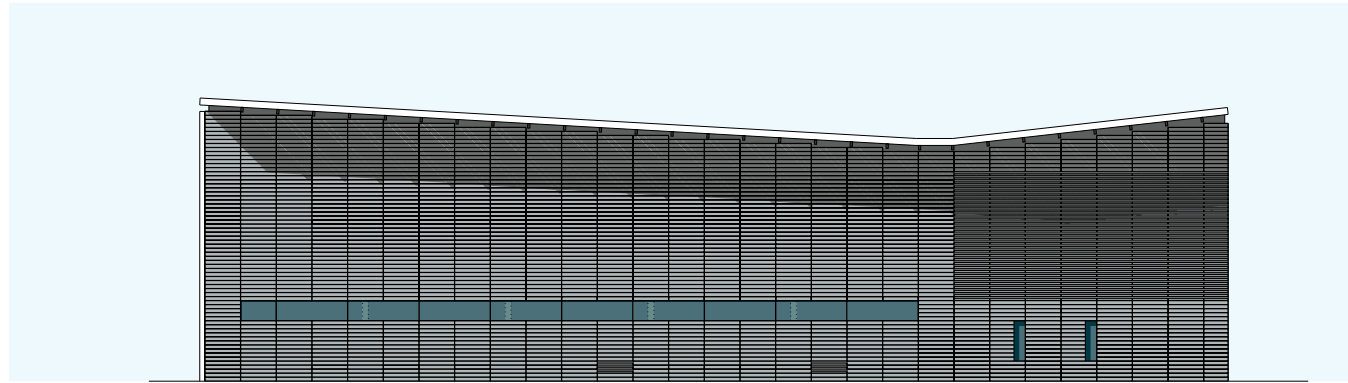
Within its simple rectangular envelope the building is split into three distinct parts: an open triple height volume for the pool; a three-storey linear block containing the service elements, and a smaller block containing the entrance, reception and a cafe.

The leisure centre is primarily a family friendly facility but has the flexibility to allow for group or club use at various times of the day. The pool itself is L-shaped on plan with a twenty five meter lap pool and a shallower beach section. Concealed machinery generates waves for the beach and an elevated flume discharges into a smaller raised pool. Adjacent to the beach poolside areas are occupied by tables served by a small cafe/bar.

The changing facilities, an un-fenestrated area, are located on the west side of the plan where the building abuts the Network Rail facilities. They are planned around the modern 'changing village' concept which promotes family and group friendly use whilst also catering for the individual user. Above this the gym with its own changing rooms occupies a lofty space with large windows overlooking the railway on the west and the swimming pool on the east. A small suite of offices is located on the third floor. To the south of the pool the public entrance and cafe on the south-east corner animates the small public square where the railway bridge terminates. The entrance leads to a reception and small shop which then gives access either to the changing rooms or the gym and offices at higher level.



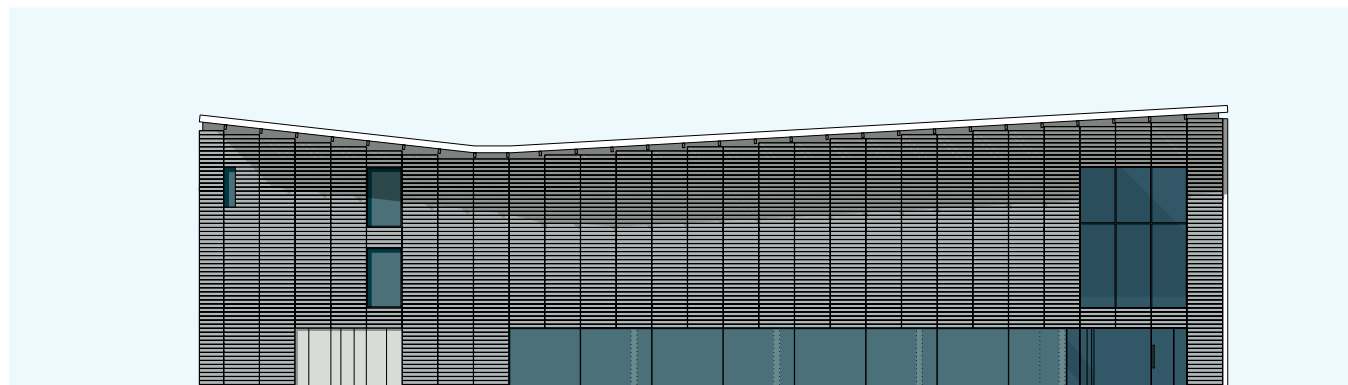
View of the leisure centre from the south



North elevation leisure centre



East elevation leisure centre



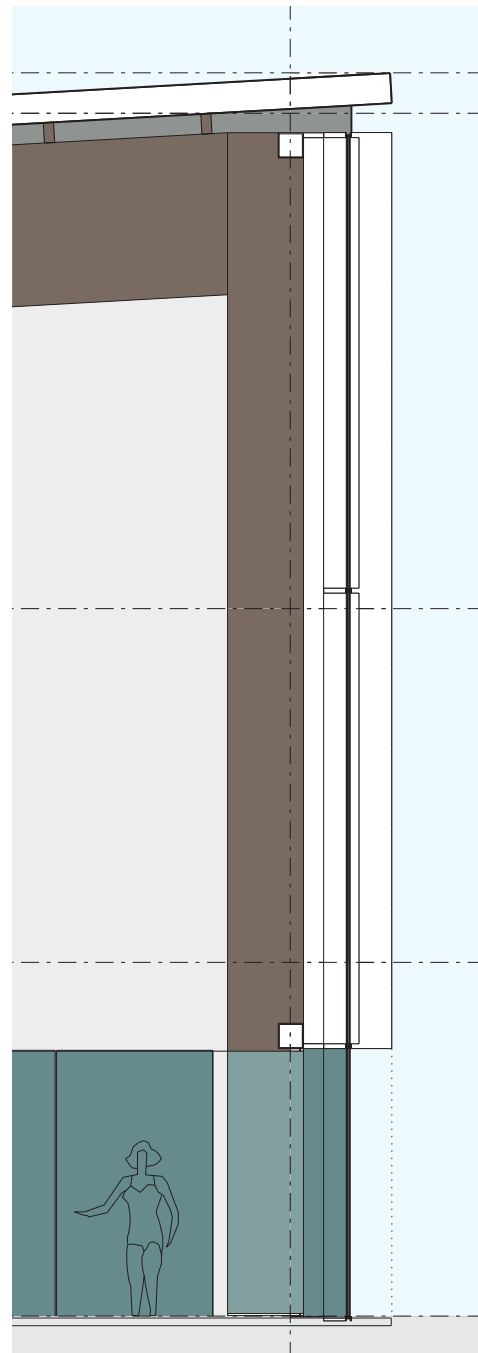
South elevation leisure centre

### Elevations

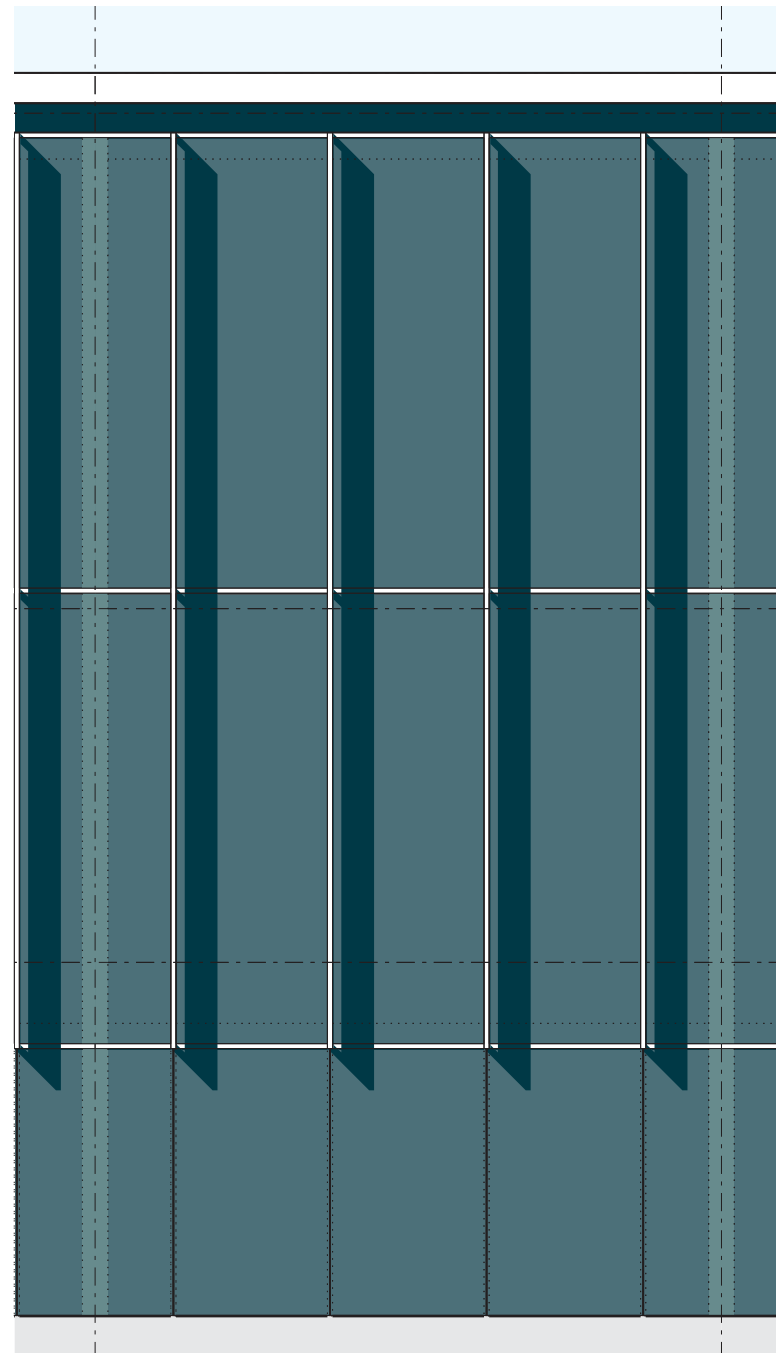
The building form is composed of two distinct parts on plan: a western rectangular block housing the changing rooms, gym and offices, and an eastern block housing the pool, the entrance and cafe bar. The two parts are joined and orientated with their junction aligned north-south. In section the forms are articulated by angling the roofs of each block upwards towards the east and west creating a valley gutter above the line of the junction. This form opens the building out towards the public square and railway and allows the north and south facades to be read as flank walls.

The more prominent east facade is entirely glazed opening the pool interior towards the public square. Vertical metal fins help to keep the sun off the building and provide visual screening from the surrounding buildings. At the ground level the windows have a series of movable metal screens that allow pool users to be completely concealed from public view.

The flank walls to the north and south have more masonry with glazing only at ground level to the pool. These walls continue around the west of the building to enclose the changing block with larger windows opening onto the gym and offices. At the south-east corner the junction between east and south facades is recessed where the entrance occurs; the vertical fins from the east elevation carry past the void producing a dramatic screen.



Bay study

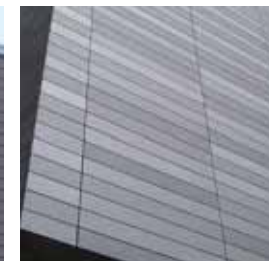


**Bay studies**

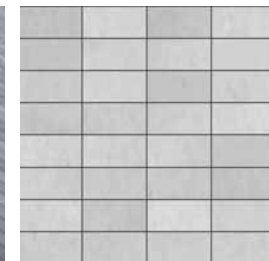
The materials chosen for the building reflect the importance of its position in the heart of the master plan and we have chosen materials which give a feeling of permanence and solidity whilst also providing interesting textures and subtle colours: terracotta panels laid horizontally are specified for the masonry walls, metal for the roof finish with supporting beams and soffit in timber. The large area of glazing to the eastern side is articulated by a series of projecting vertical metal fins whilst internally metal perforate screens fold to control the privacy of the pool users.



Metal solar shading



Terracotta panels



Terracotta panels



Metal standing seam roof