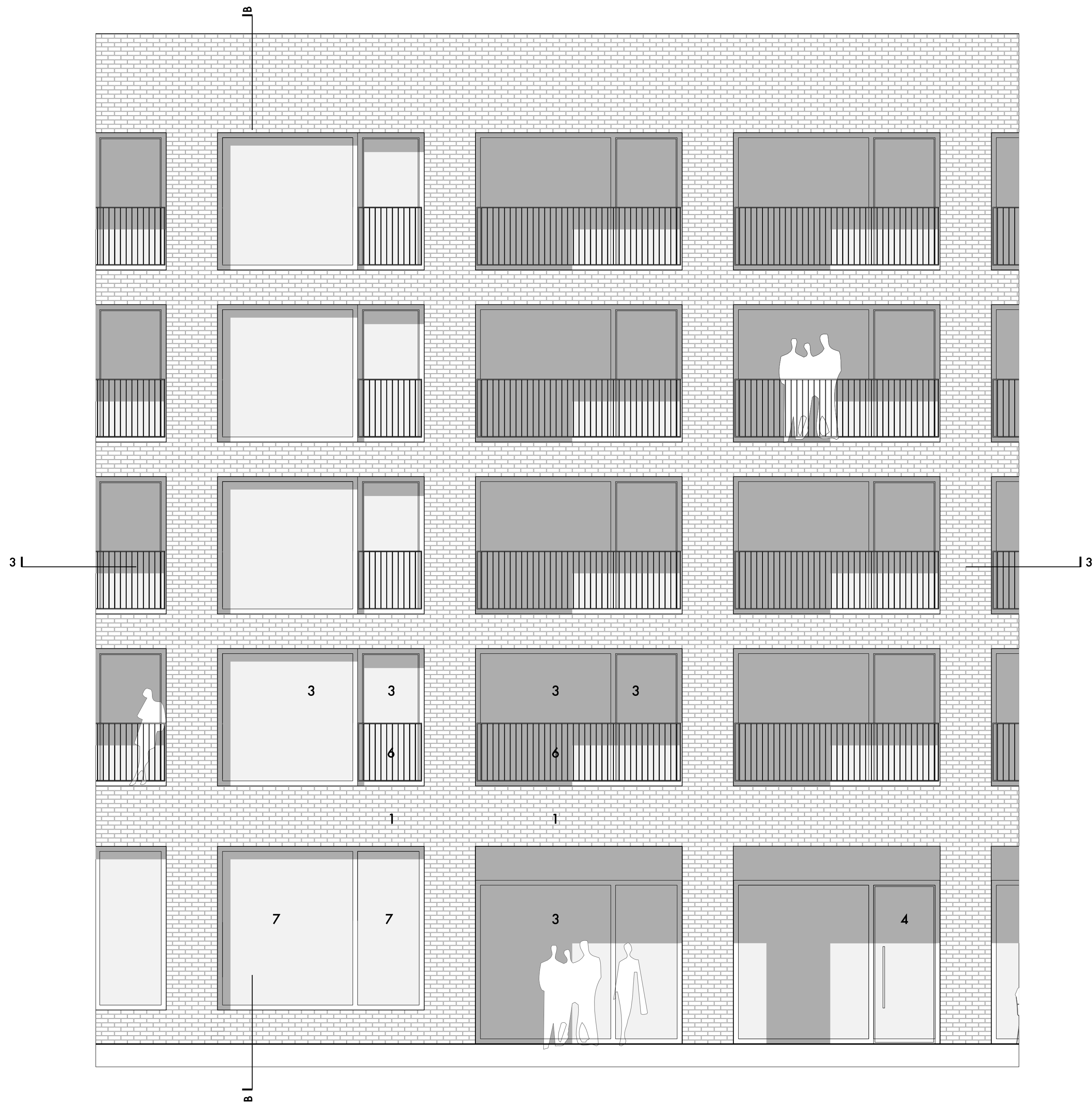
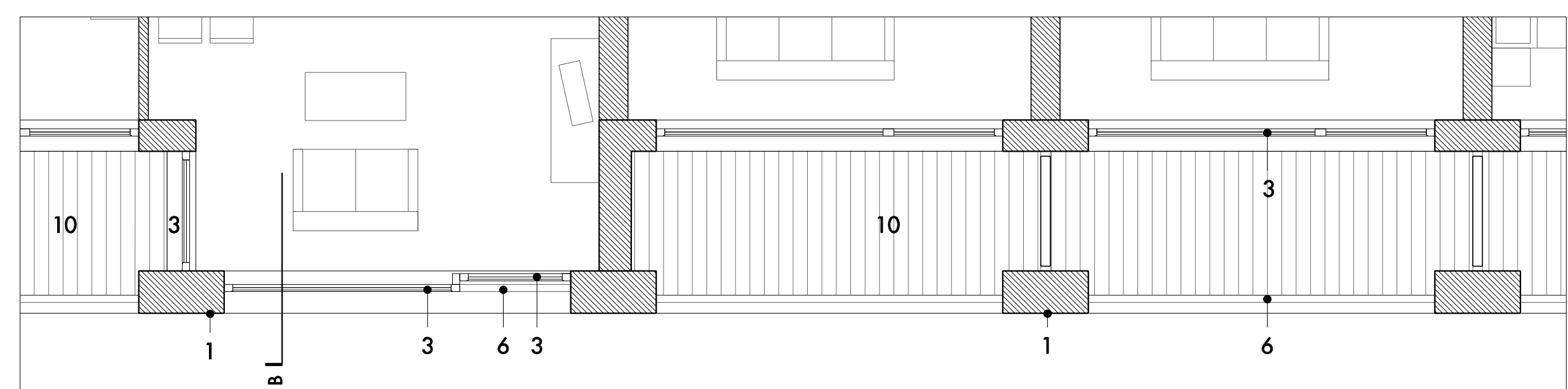


PART ELEVATION: NORTH



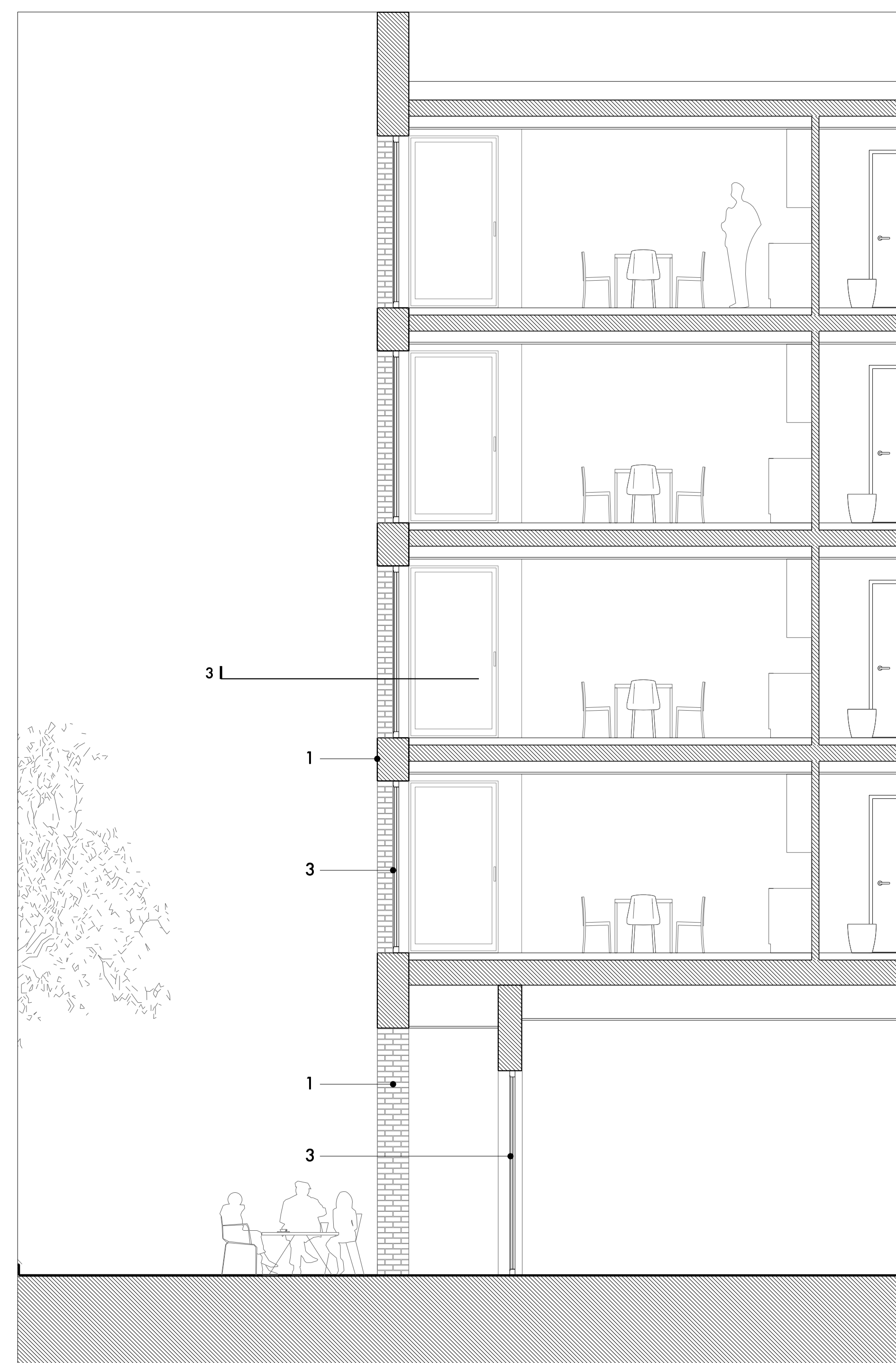
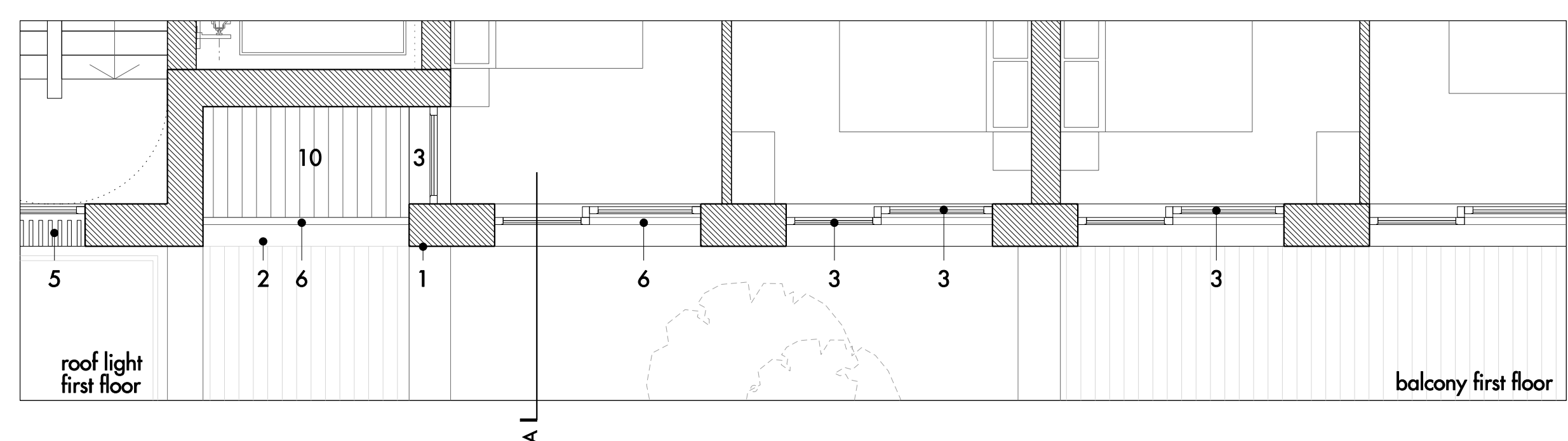
3 SECOND FLOOR PLAN



PART ELEVATION: SOUTH

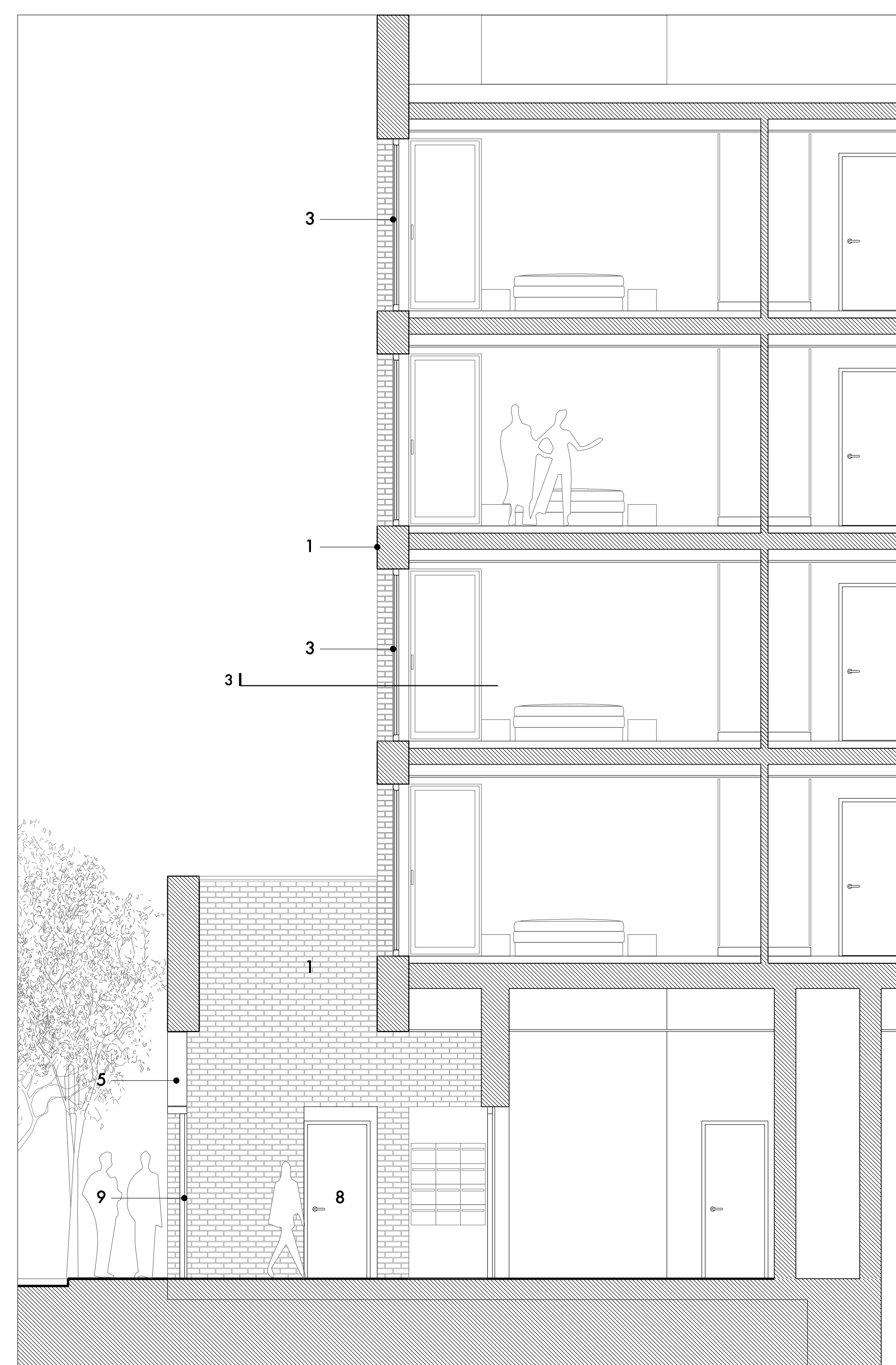


3 THIRD FLOOR PLAN



SECTION BB

- KEY TO MATERIALS:
- 1. Brick
 - 2. Reconstituted stone
 - 3. Metal framed double glazed windows
 - 4. Metal framed double glazed doors
 - 5. Vertical timber louvre screen
 - 6. Metal handrail
 - 7. Opaque glass insulated panel
 - 8. Metal panelled door
 - 9. Courtyard door with vertical timber louvres
 - 10. Timber decking



SECTION AA



For planning purposes only.

REV	DATE	DESCRIPTION	CD	REV	DATE	DESCRIPTION	CD
A	17.02.2010	EMF EISENBERG COMMENTS	B				

Allies and Morrison
 85 Southwark Street
 London SE1 0XK
 020 7921 0100
 020 7921 0101
 info@alliesandmorrison.co.uk
 JOB NO: 568

BROADWATER RD WEST, WELWYN GARDEN CITY
 DETAILED PROPOSALS: RESIDENTIAL BUILDING K
 BAYSTUDIES NORTH AND SOUTH ELEVATIONS: PROPOSED
 568_07_325
 SCALE: 1:50 @A0 1:100 @A2

A
 revision