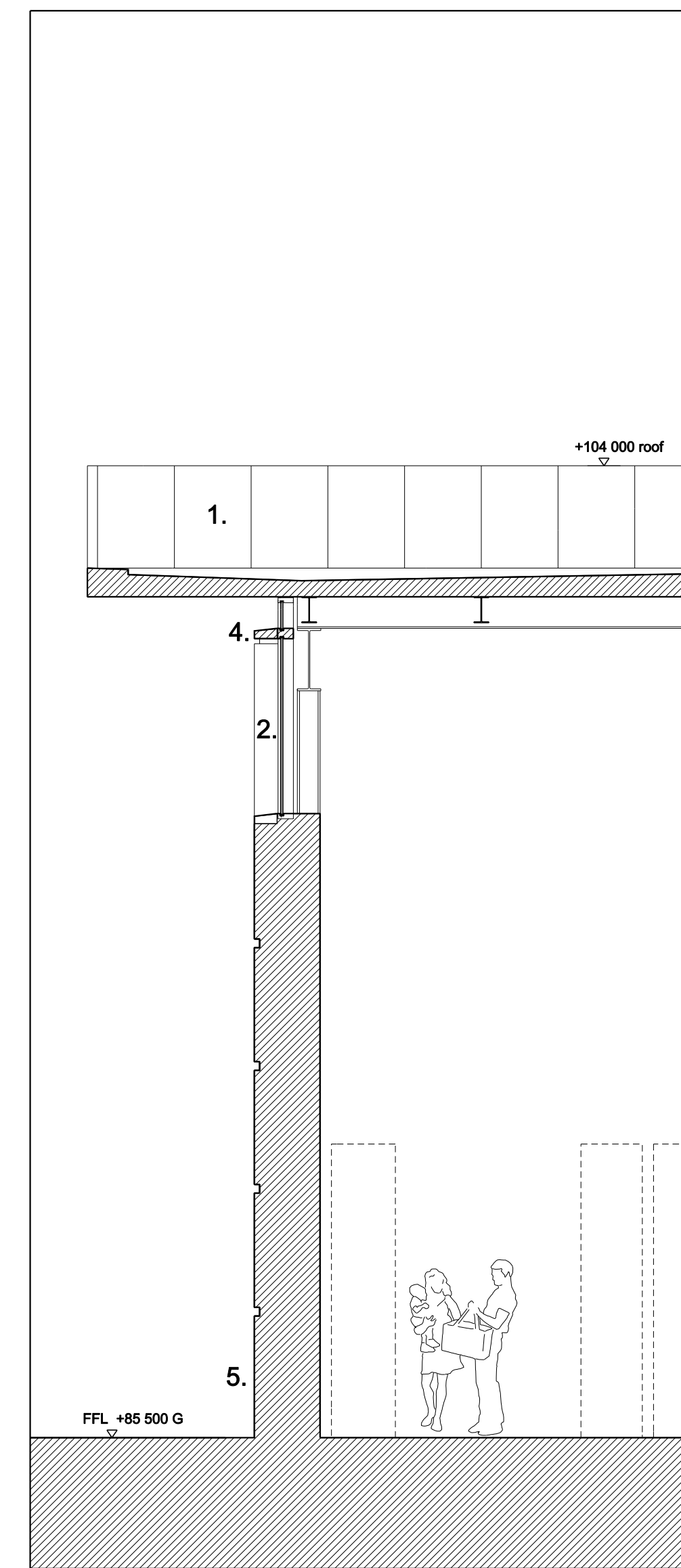
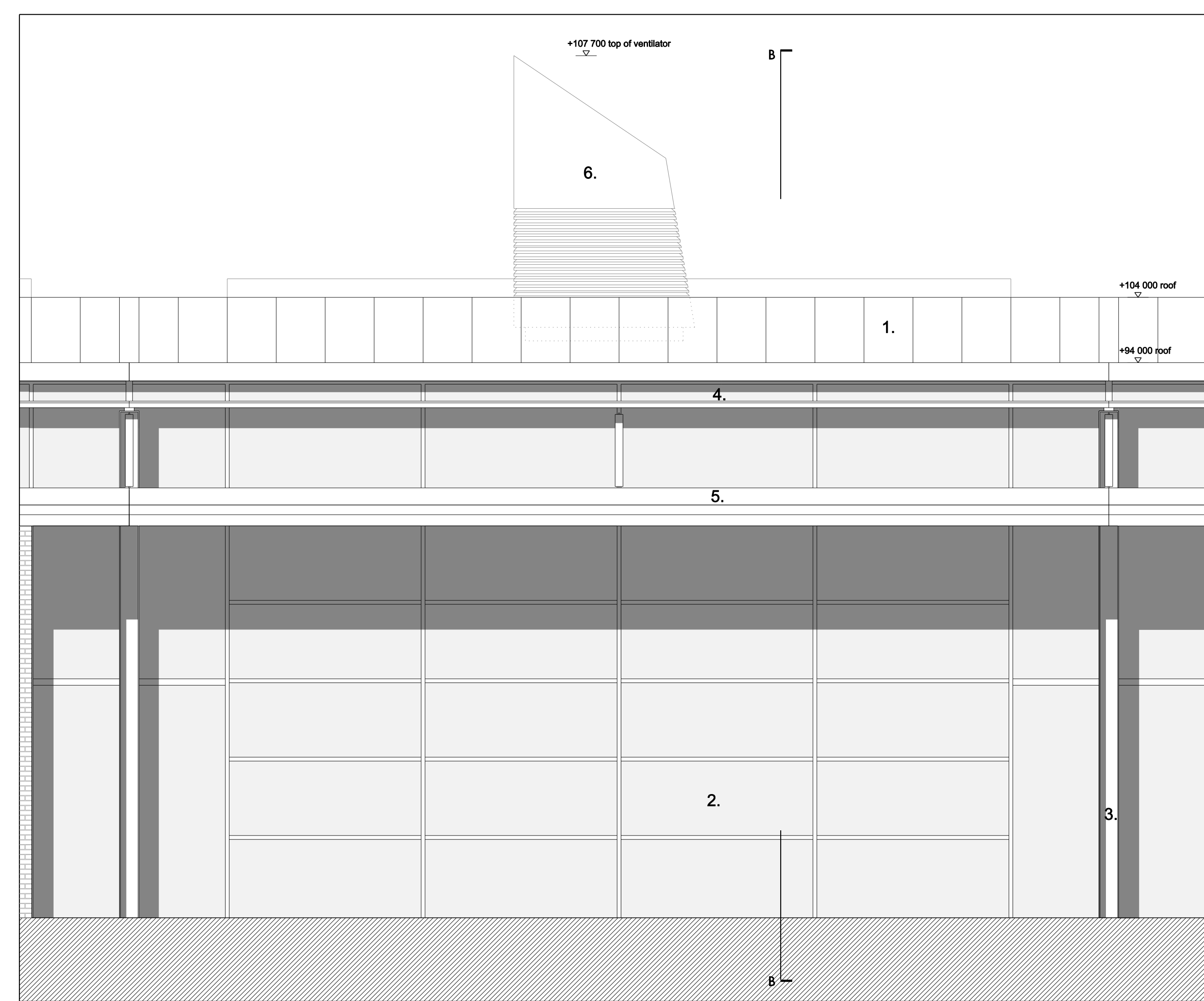


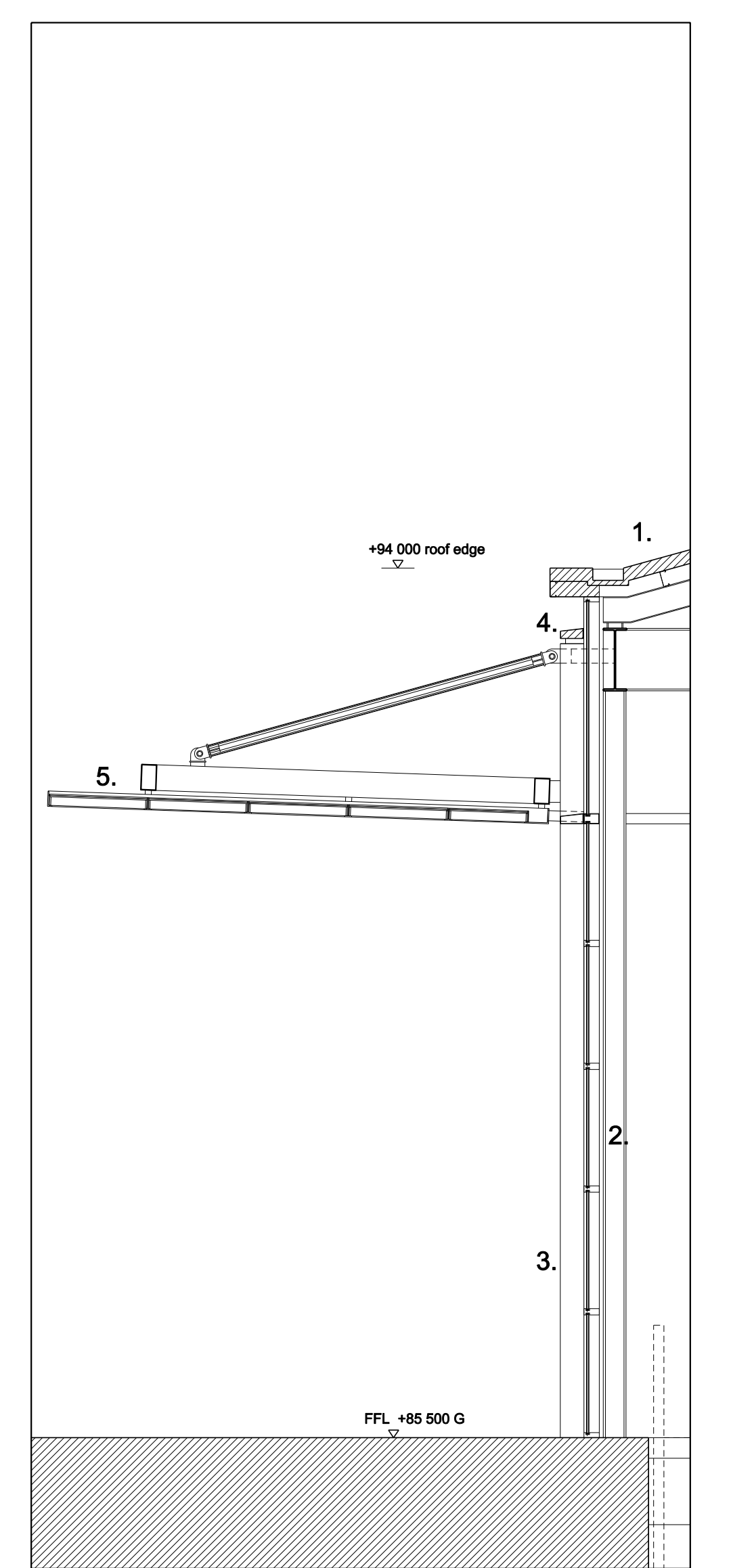
EAST/WEST ELEVATION : STORE



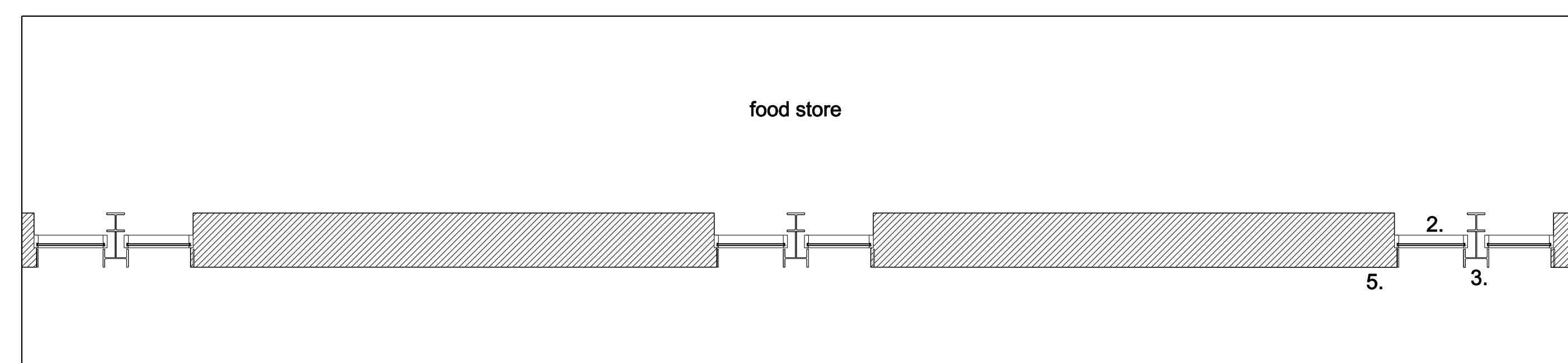
SECTION AA : STORE



SOUTH ELEVATION : STORE

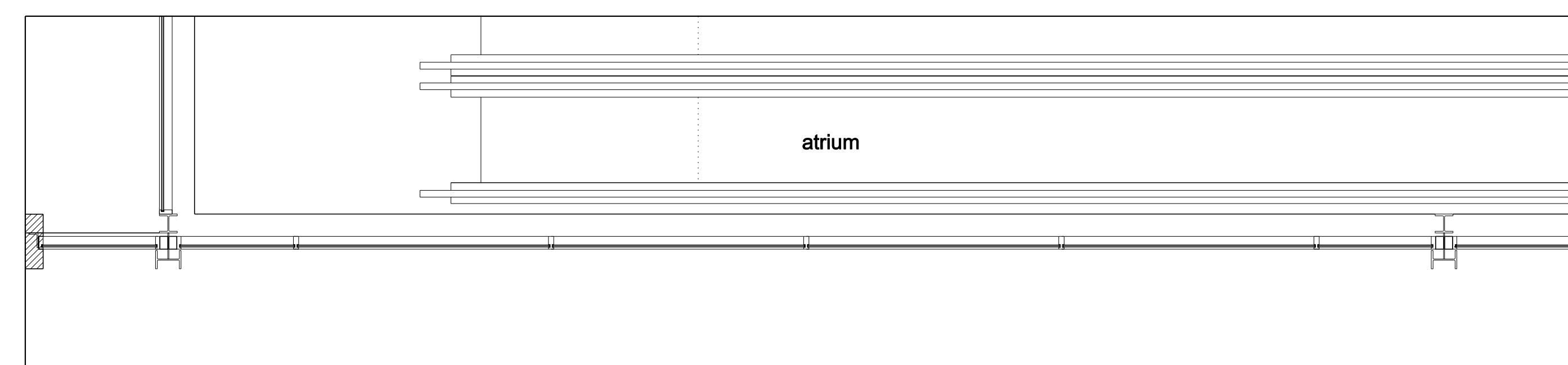


SECTION BB : STORE



PLAN : STORE

- KEY TO MATERIALS:
1. Metal roof
 2. Metal framed double glazed windows
 3. Steel column
 4. Metal coping
 5. White brick
 6. Metal panel
 7. Metal ventilation cowl



PLAN : STORE

- KEY TO MATERIALS:
1. Metal roof
 2. Metal framed double glazed windows
 3. Steel column
 4. Metal coping
 5. Metal and glass canopy
 6. Metal ventilation cowl



For planning purposes only.

REV	DATE	DESCRIPTION	DD	REV	DATE	DESCRIPTION	DD	REV	DATE	DESCRIPTION	DD	REV	DATE	DESCRIPTION	DD	REV	DATE	DESCRIPTION	DD
A	17/08/2010	PLANNING APPLICATION	W																

Allies and Morrison
85 Southwark Street
London SE1 0JX
telephone 020 7921 0100
facsimile 020 7921 0101
email info@alliesandmorrison.co.uk
JOB NO: 568

BROADWATER ROAD WEST, WELWYN GARDEN CITY
DETAILED PROPOSALS: SHREDDED WHEAT FACTORY
FOOD STORE BAY STUDIES
568_07_163
SCALE: 1:50 @ A0; 1:100 @ A2

A
revision