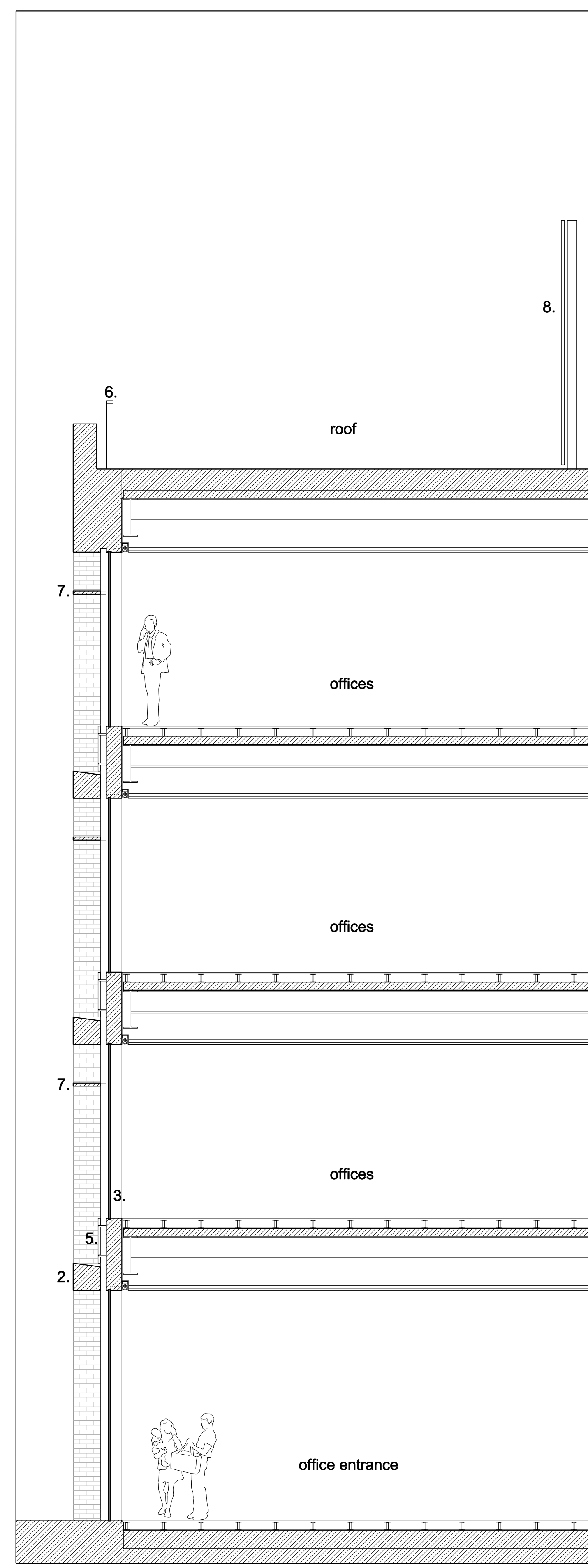
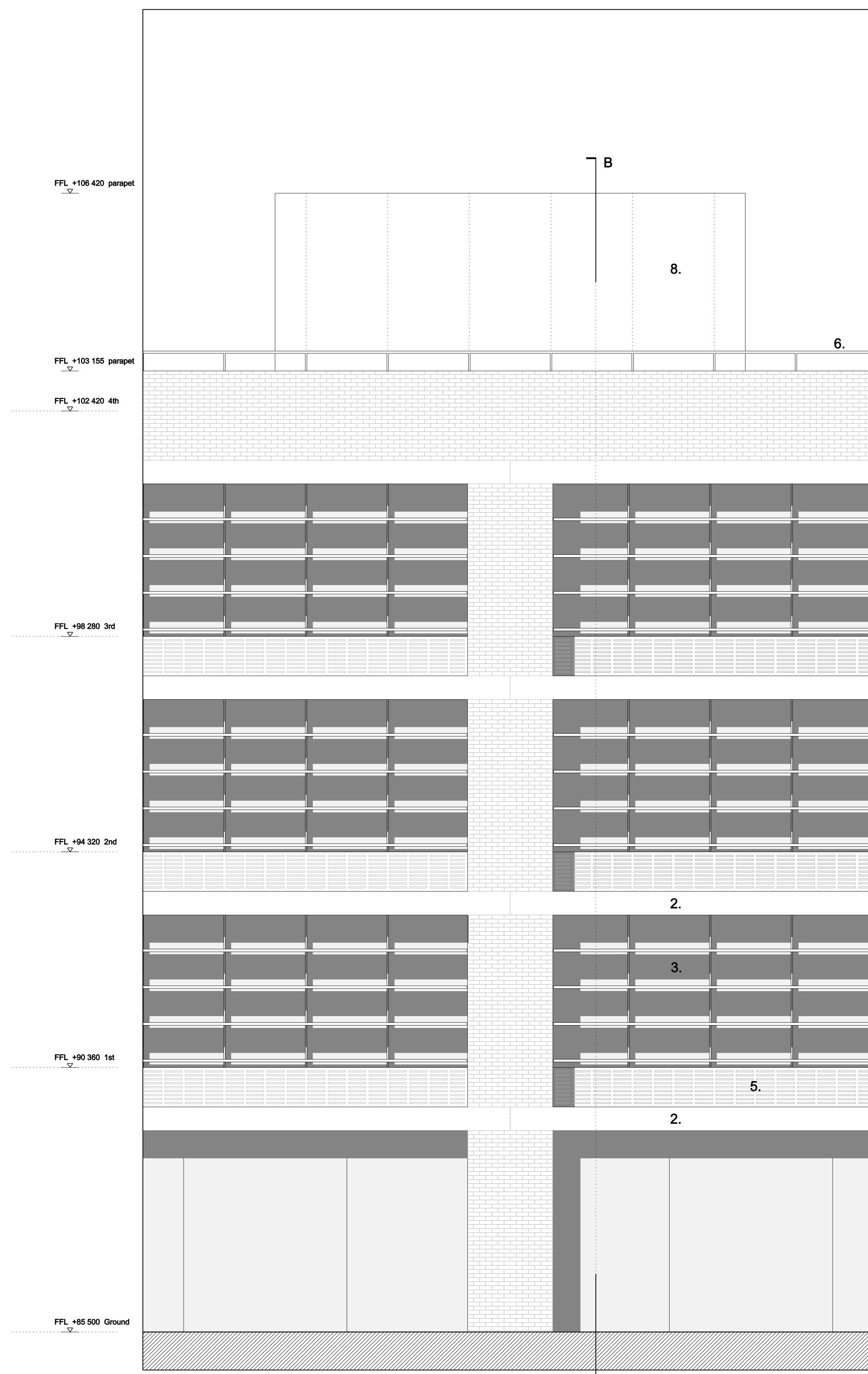


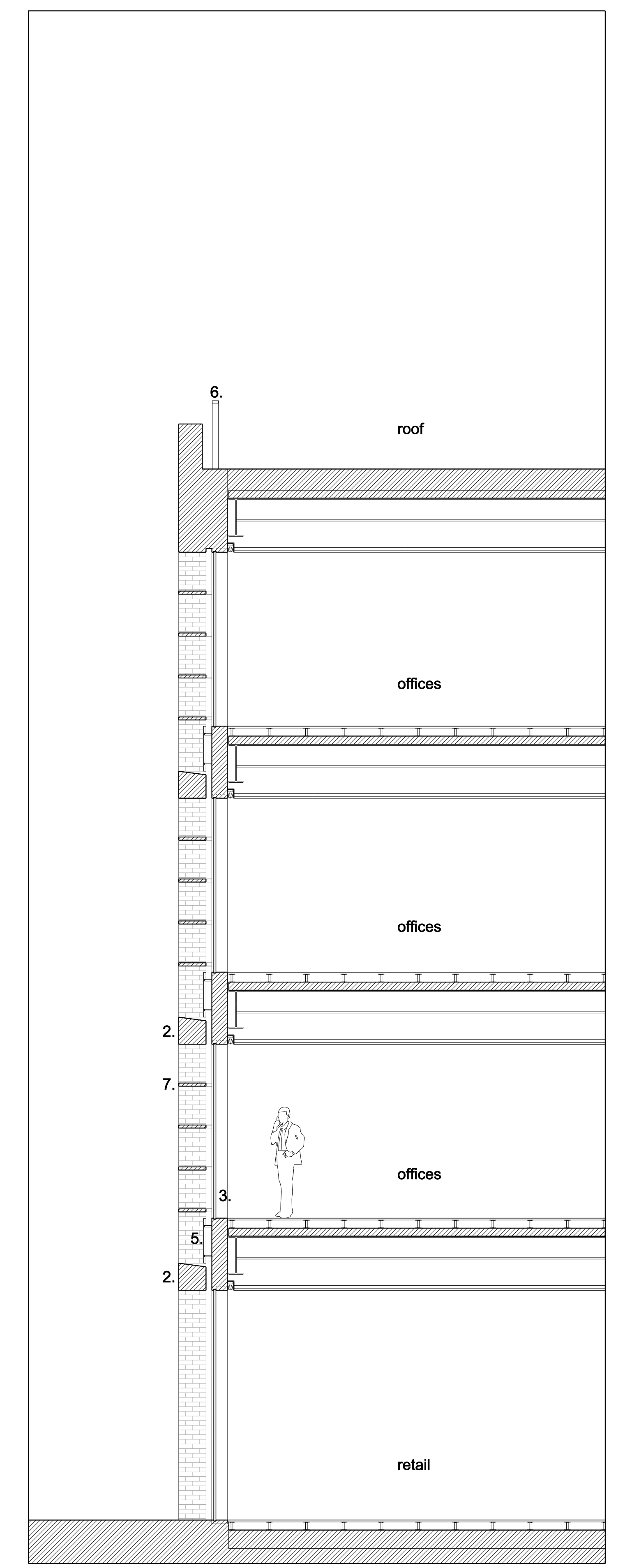
PART ELEVATION: SOUTH



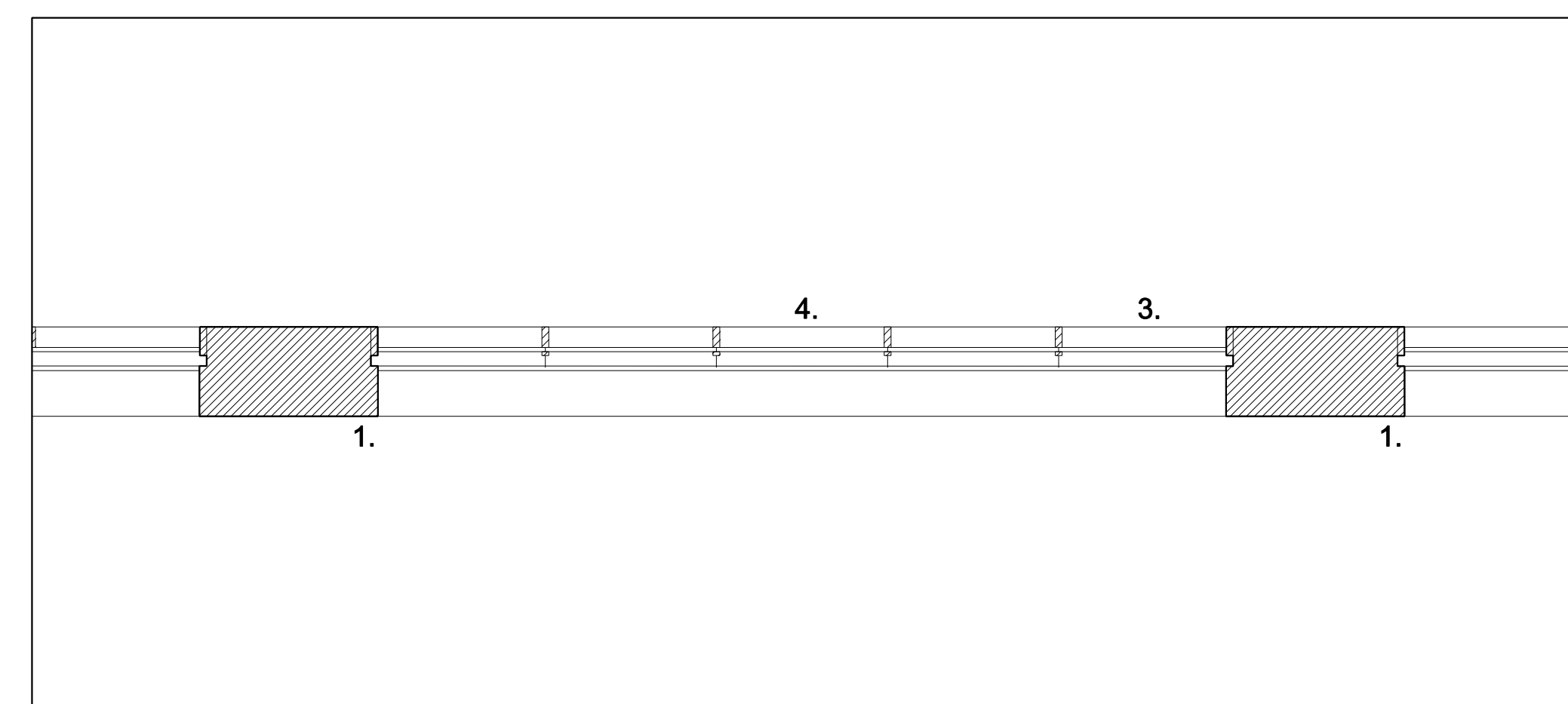
SECTION AA



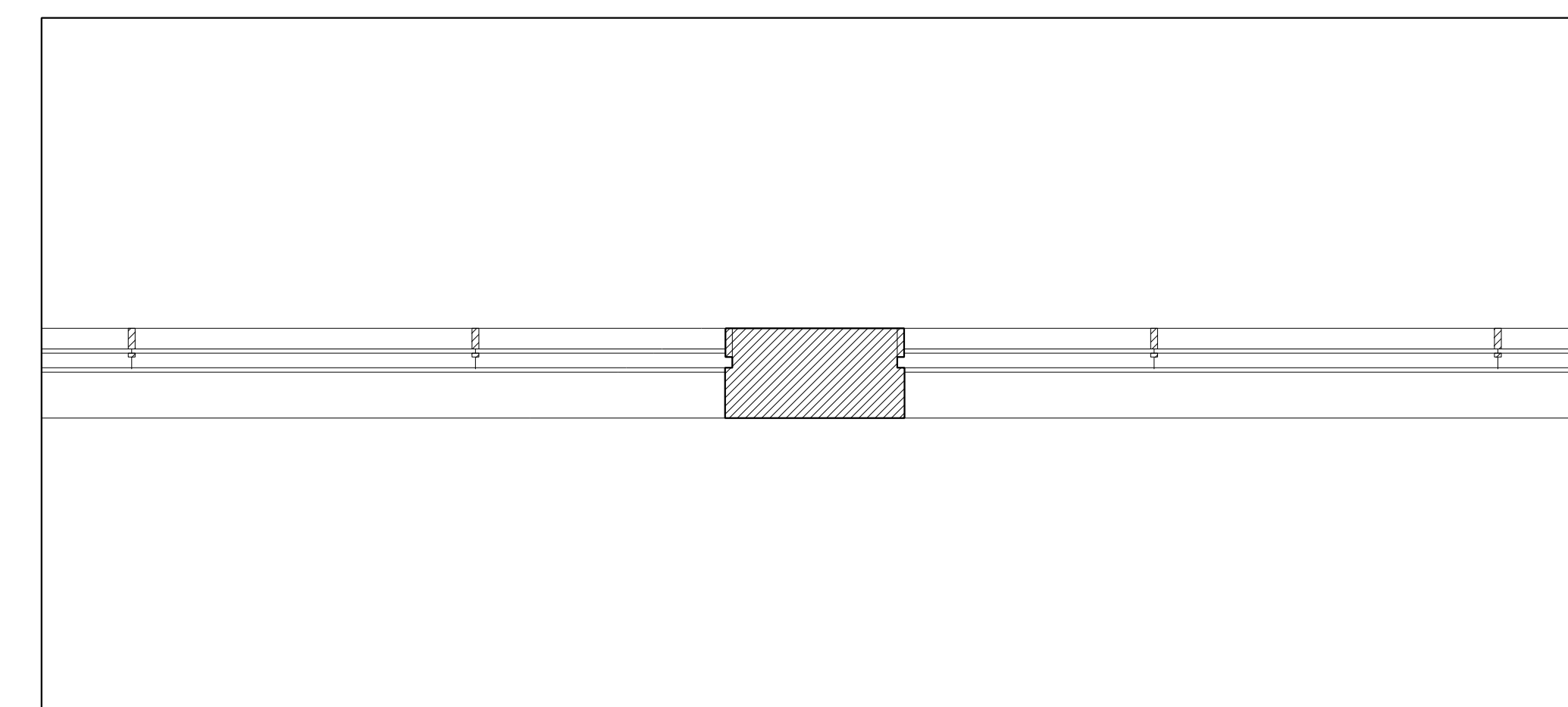
PART ELEVATION: EAST



SECTION BB



FIRST FLOOR PLAN



FIRST FLOOR PLAN

- KEY TO MATERIALS:
- 1. Brick
 - 2. Reconstituted stone
 - 3. Metal framed double glazed windows
 - 4. Opaque glass insulated panel
 - 5. Decorative patterned metal panel
 - 6. Metal handrail
 - 7. Metal louvre
 - 8. Metal panelled plant enclosure

For planning purposes only.

REV	DATE	DESCRIPTION	REV	DATE	DESCRIPTION	REV	DATE	DESCRIPTION	REV	DATE	DESCRIPTION
A	17.08.2016	PLANNING APPLICATION	B								

Allies and Morrison
 85 Southwark Street
 London SE1 0XK
 telephone 020 7921 0100
 facsimile 020 7921 0101
 email info@alliesandmorrison.co.uk
 JOB NO: 568

BROADWATER ROAD WEST, WELWYN GARDEN CITY
 DETAILED PROPOSALS: SHREDDEN WHEAT FACTORY
 OFFICE BUILDING F BAY STUDIES
 568_07_162
 SCALE: 1:50 @ A0; 1:100 @ A2

A
 revision