

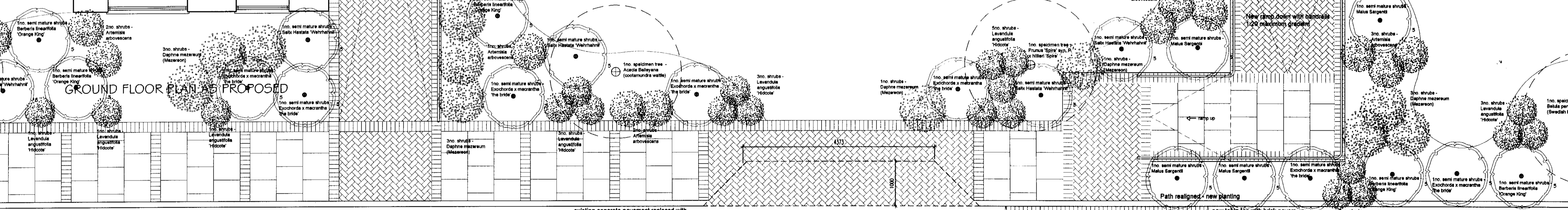
PLANNING DEPARTMENT  
 OFFICE COPY  
 2016 JUN 20 10  
 1275

e - Jun 10 as requested by the planning dept the 'do not scale' note has been omitted from this drawing, as requested by the planning dept the paper size has been noted, as requested by the planning dept a scale bar has been added

- d - Jun 10 lobby arrangement to flat one added
- c - May 10 external footpath rev'd, layout to flat one & laundry rev'd, rear escape doors rev'd, table top to access road added, notes rev'd, all as per client comments
- b - May 10 stair windows configuration rev'd, fire screen configuration rev'd, position of roof light rev'd, footpath design rev'd, all as per clients comments
- a - April 12 main entrance rev'd, external paving materials (Bath House) reviewed, internal elevations revised, all as per clients comments, wall lights added to plans

Levitt Partnership  
 67 London Road  
 Blythwood  
 Bideford GL24 1BU  
 Tel: 01787 512808  
 Fax: 01787 513400

GROUND FLOOR PLAN AS PROPOSED

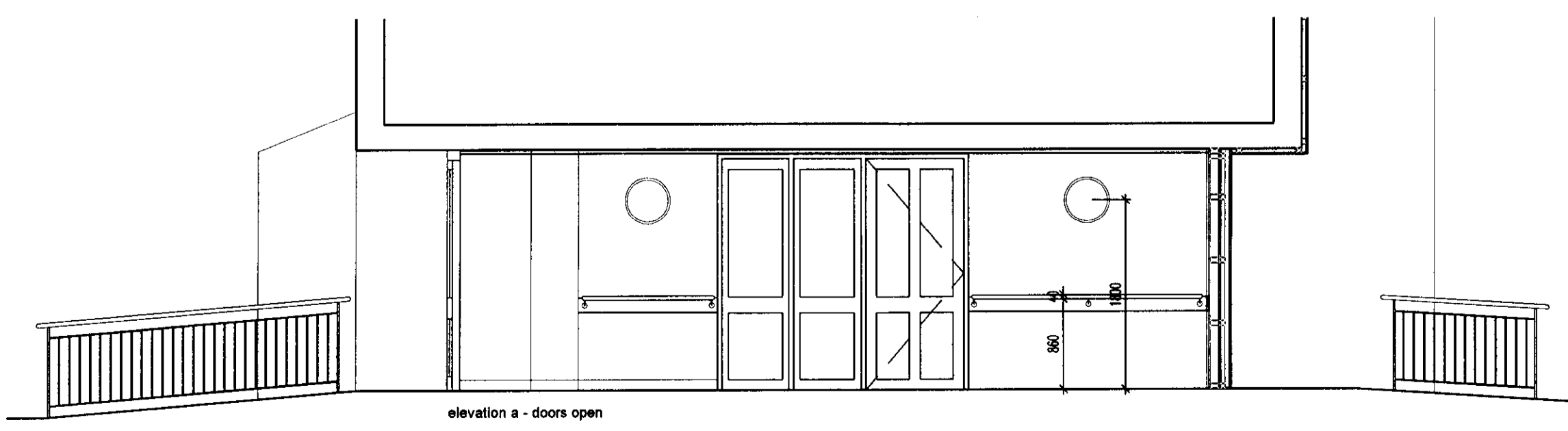


existing concrete pavement replaced with marshalls paving slabs 600x600mm type and colour tbc, & marshalls brick paving 'Divine' 60 Vintage' colour either 'Bracken' laid as indicated

drop kerb to layby

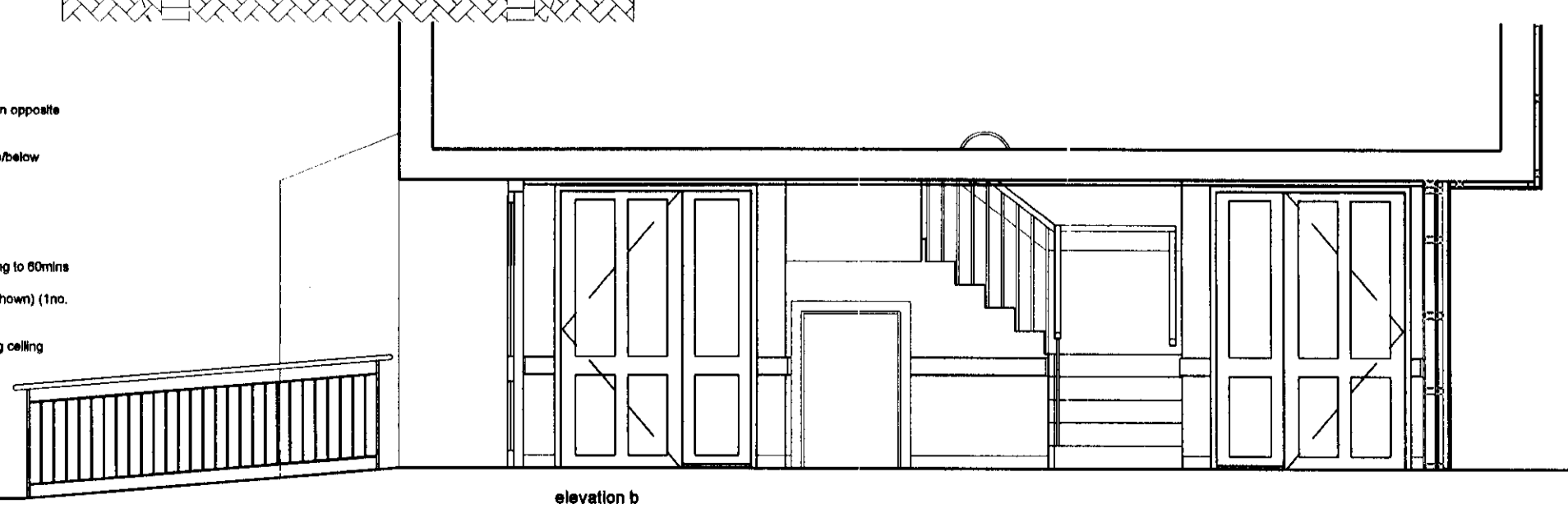
new table top with brick pavers

access road



elevation a - doors open

- 170mm torus mdf skirting painted white gloss
- 170mm torus mdf dado rail painted white gloss
- 20mm dia hardwood rope (R) rail painted to match colour of rail cap on opposite side of stair, new brackets to be in brass
- two tone colour scheme in common hall ways with varying tones above/below dado rail
- continuous torus mdf skirting against walls to line through with skirtings
- existing outer skirtings to be painted white gloss
- hardwood framed door and screen to form fire lobbies with pyran glazing to 60mins
- wall mounted circular light fittings (2no white ground floor position as shown) (1no. at the midpoint of stair flight) on PIR sensors with 20min ovenrun
- 12.5mm mdf board ceiling with at least 25mm service void below existing ceiling



elevation b

Client: WGCHA

Project: WOODSIDE HOUSE BLOCK 1  
 REFURBISHMENT OF STAIR  
 LOBBIES AND FIRE STRATEGY  
 IMPROVEMENTS

Drawing Title: block 1 - proposed ground floor

Job No.	12146	Scale	1:50@a1
Drawing No.	200	Date	mar 10
Rev.	e	Drawn	jpg