

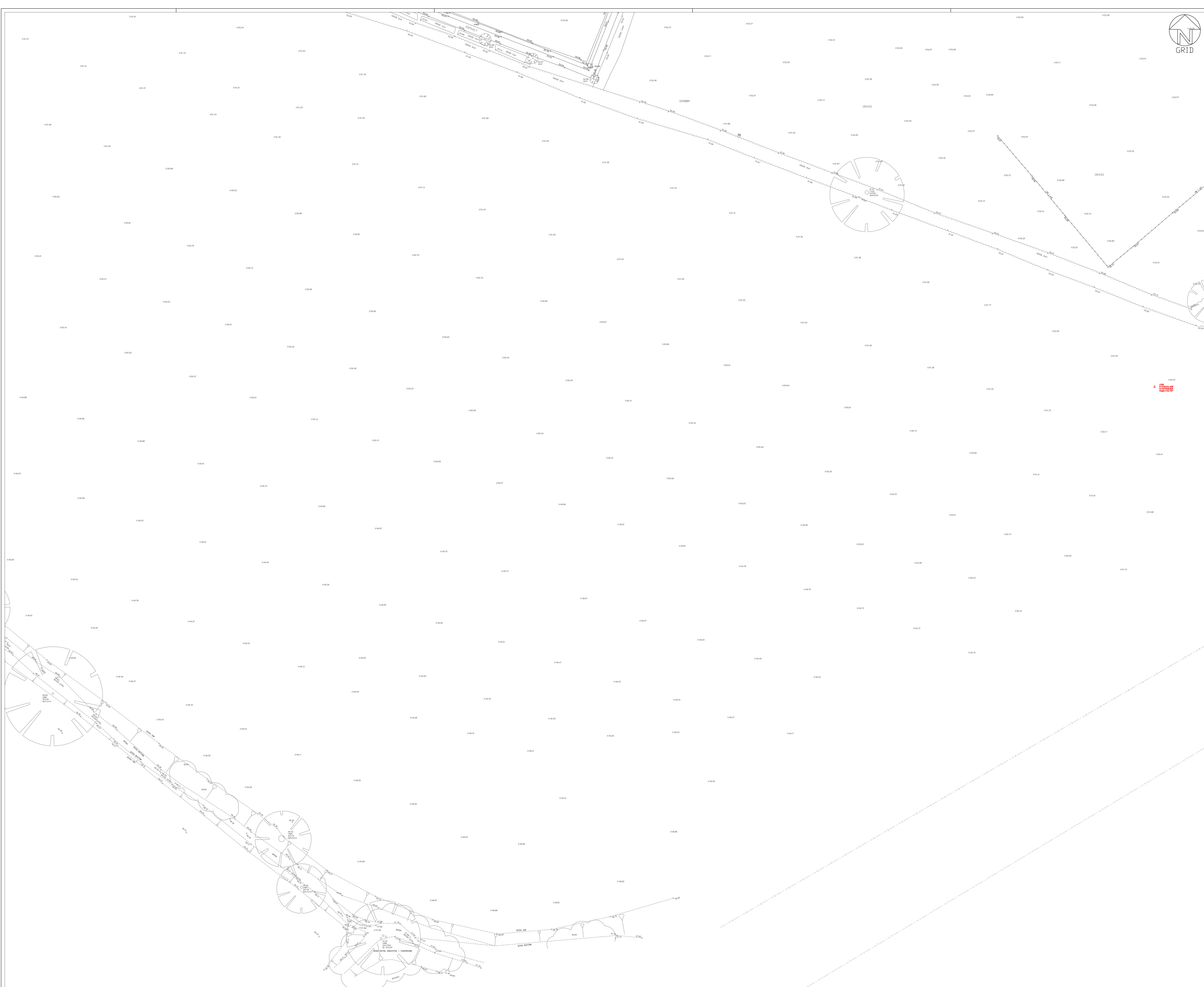
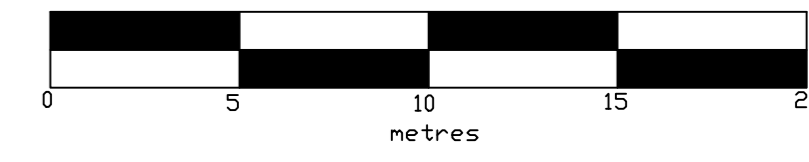


Topographical Survey

Land surrounding Cuffley Football Club

Sheet 10 of 10
August 2014
Scale
1:200

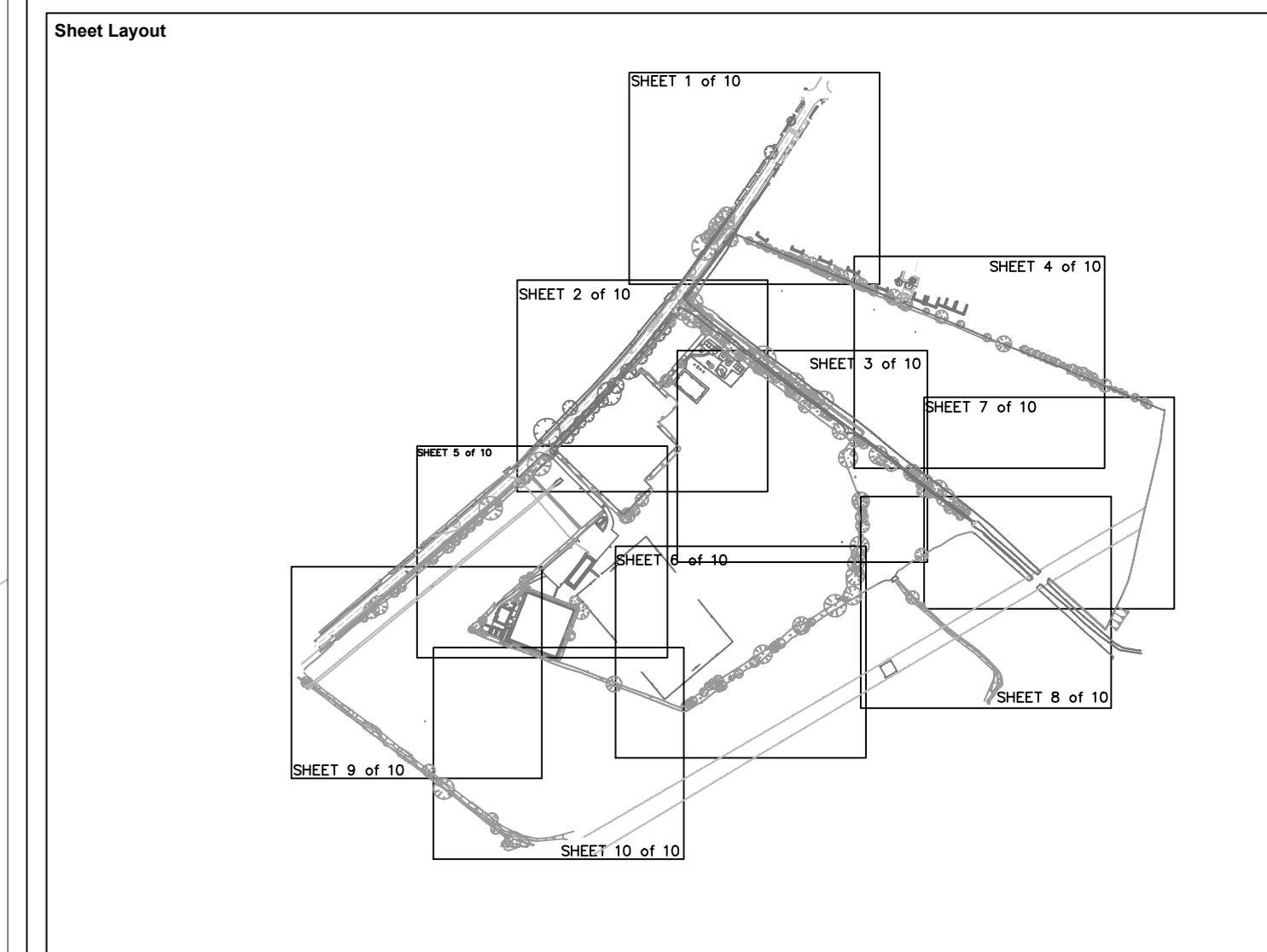
Horizontal Datum: Supplied by client
Vertical Datum: Supplied by client
Units: Metres



Survey Notes

1) This drawing contains elements from drawing S-06-431-01 as supplied by client.

2) The survey control is based on the following stations within the above drawing
 SZ E63018.248 N202117.793 Level 62.74
 S3 E63047.144 N202176.436



Legend

	Survey Control Station		Gate
	Spot Level N.B. Spot levels at road edge relate to channel line		Top of bank
	Major Contour 1m Interval		Bottom of bank
	Minor Contour 0.5m Interval		Tree Canopy
	Overhead Telecoms		Foliage/Hedge edge
	Overhead Electric		

Abbreviations

PP	Post and Panel Fenceline	ER	Earth Rod	EPO	Telegraph Pole
PR	Post and Rail Fenceline	MW	Monitoring Well	EPS	Electric Pole
PW	Post and Wire Fenceline	CR	Cable-Riser	RS	Road Sign
SM	Post and Steel Mesh Fenceline	EPO	Electric Pole	BO-C	Boilard - Concrete
met	Height in Metres			BO-S	Boilard - Steel
IC	Inspection Cover	GSV	Gas Valve	BO-W	Boilard - Wooden
CM	Cover Level	GM	Gas Meter	LB	Liter Bin
CL	Invert Level	GR	Gas Riser	PI	Pillar
IS	Down Pipe			RS	Road Sign
G	Gully	AV	Air Valve	TS	Tree Stump
DP	Down Pipe	WEST	Stop Tap	TCSB	Telephone Call Box
KWP	Rain Water Pipe	WSV	Shock Valve	FP	Flag Pole
FWP	Foul Water Pipe	WM	Water Meter	TP	Traffic Paving
VIC	Vent Cover	WO	Wash Out	FP	Fuel Pump
RE	Roading Eye			TL	Traffic Light
VP	Vent Pipe	SL	Street Light	LA	Ladder
FWS	Foul Water Sewage	PLM	Pipeline Marker	FB	Flower Bed
SWS	Surface Water Sewage	CAB	Street Cabinet	DK	Dropped Kerb

Prepared for: Landis Improvement
10 Lower Goswender Place
London
E9 1WJ BEN

Surveyed by: C. Whitley, R. Baker
Date: 14th - 22nd August 2014

Drawing Reference	Rev	Date	Description	Prepared By	Drawn By	Checked By	Approved By
1667_200_10	0	20/08/14	First issue				

This drawing is the copyright of LandScope Engineering Ltd and may not be reproduced or amended except by written permission. No liability will be accepted for amendments made by other persons