



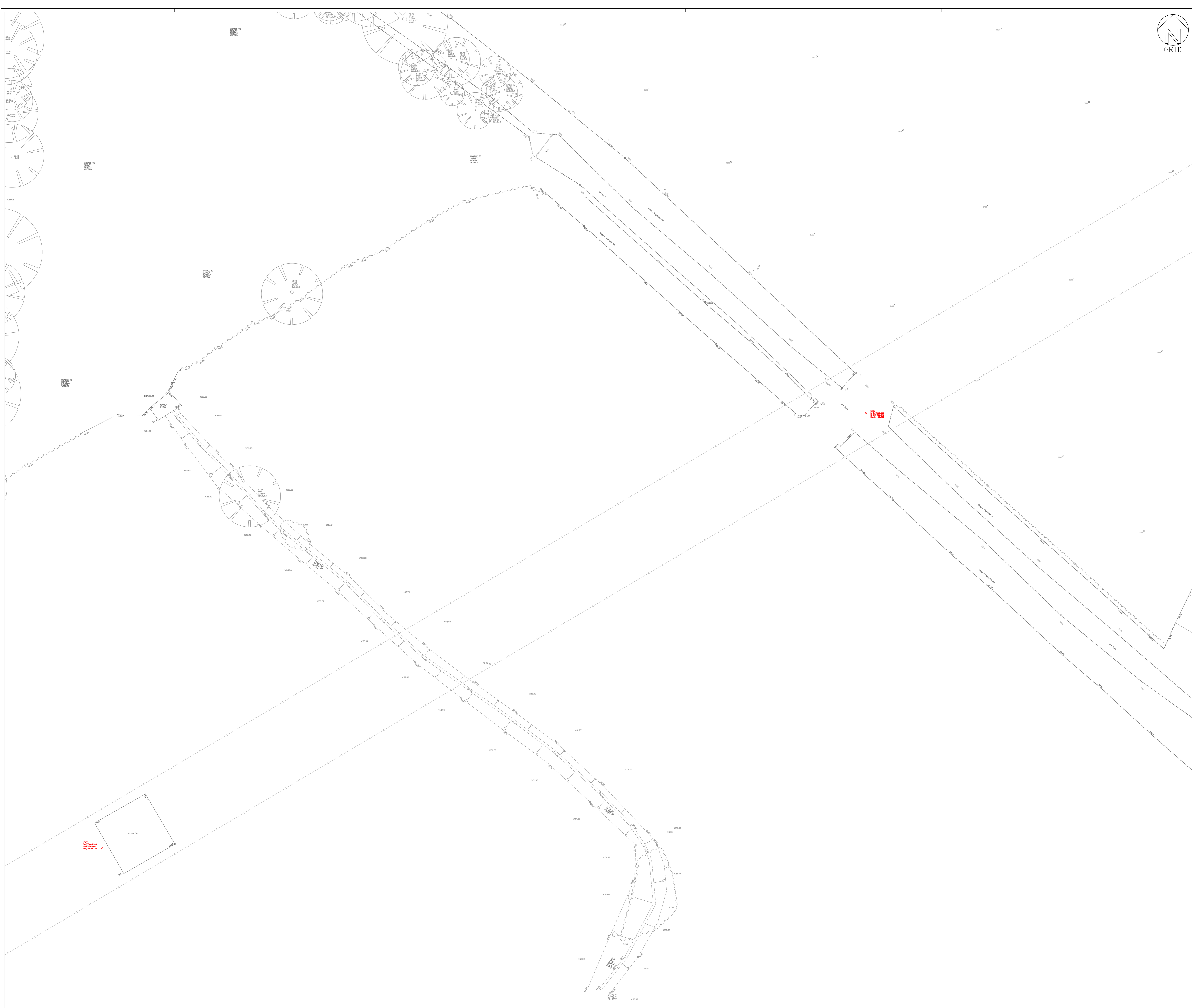
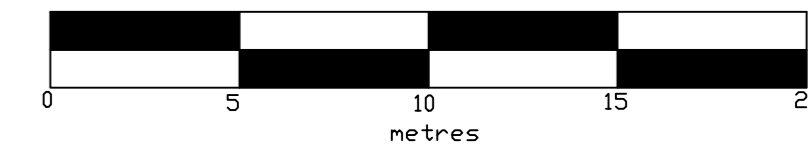
# Topographical Survey

## Land surrounding Cuffley Football Club

Sheet 8 of 10  
August 2014

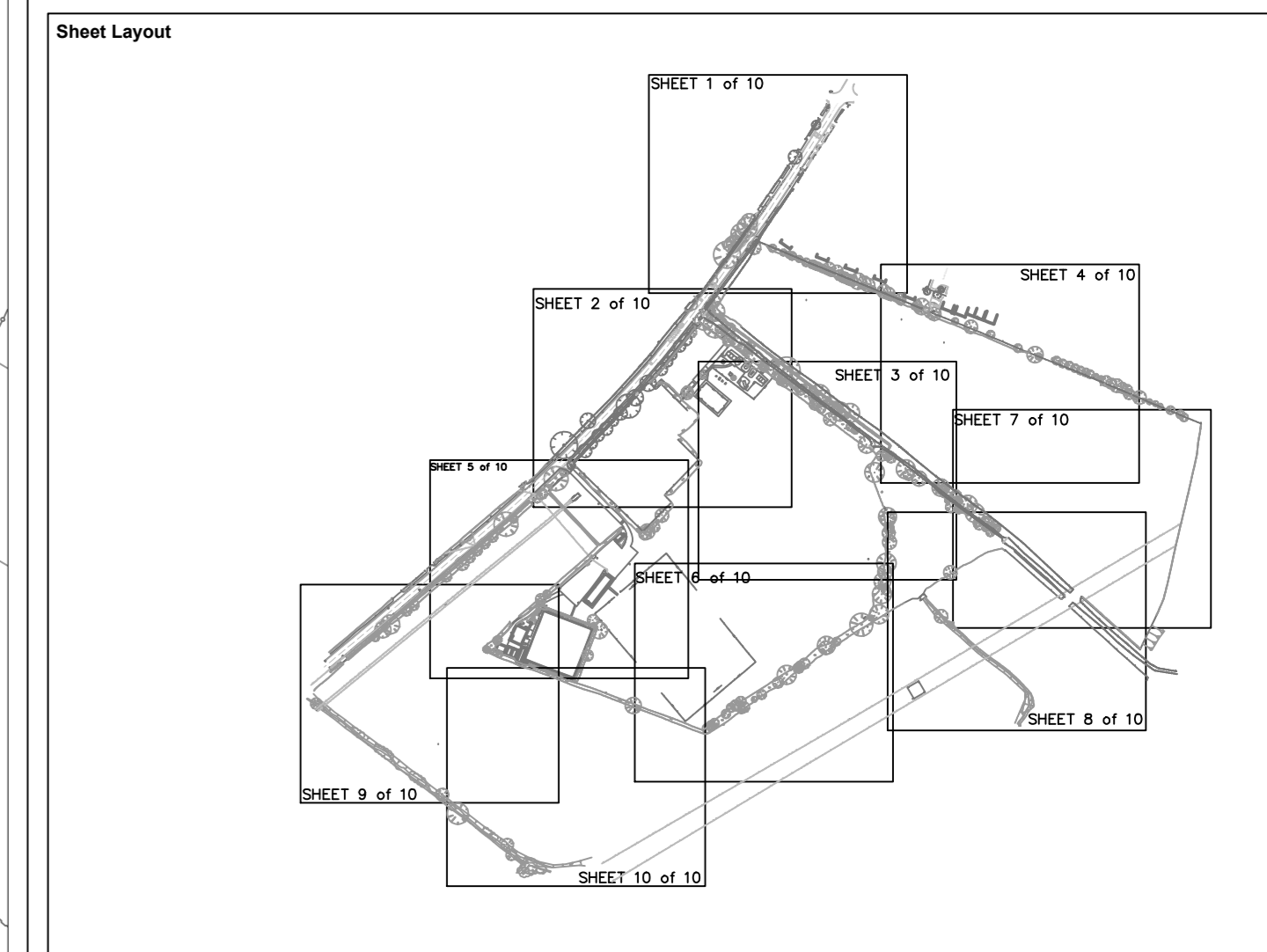
Scale  
1:200

Horizontal Datum: Supplied by client  
Vertical Datum: Supplied by client  
Units: Metres



**Survey Notes**

1) This drawing contains elements from drawing S-06-431-01 as supplied by client.  
 2) The survey control is based on the following stations within the above drawing  
 SZ 853018.248 N202117.793 Level 42.74  
 S3 E630247.144 N202176.436



**Legend**

	Survey Control Station		Tee with elevation, height in metres and spread to scale
	Spot Level N.B. Spot levels at road edge relate to channel line		Gate
	Major Contour 1m Interval		Top of bank
	Minor Contour 0.5m Interval		Bottom of bank
	Overhead Telecoms		Tee Canopy
	Overhead Electric		Foliage/Hedge edge

**Abbreviations**

PP	Post and Panel Fenceline	ER	Earth Rod	TPO	Telegraph Pole
PR	Post and Rail Fenceline	MW	Monitoring Well	EPO	Electricity Pole
PW	Post and Wire Fenceline	CR	Cable-Riser	RS	Road Sign
SM	Post and Steel Mesh Fenceline	EPO	Electric Pole	BO - C	Boilard - Concrete
ms	Height in Metres	EPO	Electric Pole	BO - S	Boilard - Steel
IC	Inspection Cover	GSV	Gas Valve	BO - W	Boilard - Wooden
CL	Cover Level	GM	Gas Meter	LB	Liter Bin
I	Invert Level	GR	Gas Riser	PI	Pillar
G	Gully	AV	Air Valve	RS	Road Sign
DP	Down Pipe	WT	Water Tank	TS	Tree Stump
KWP	Rain Water Pipe	WSV	Shock Valve	TCSB	Telephone Call Box
FWP	Foul Waste Pipe	WM	Water Meter	TP	Traffic Paving
VC	Vent Cover	WO	Wash Out	FP	Fuel Pump
RE	Roading Eye	TL	Telephone	LA	Ladder
VP	Vent Pipe	SL	Street Light	LA	Traffic Induction Loop
FWS	Foul Water Sewage	PLM	Pipeline Marker	FB	Flower Bed
SWS	Surface Water Sewage	CAB	Street Cabinet	DK	Dropped Kerb

Prepared for: Landis Improvement  
 10 Lower Goswami Place  
 London  
 ESW1W 6EN

Surveyed by: C. Whitley, R. Baker  
 Date: 14th - 22nd August 2014

Drawing Reference	Rev	Date	Description	Drawn By	Checked By	Approved By
1667_200_8	0	20/08/14	First issue	1667_0	CWH/RB	MB

This drawing is the copyright of LandScope Engineering Ltd and may not be reproduced or amended except by written permission. No liability will be accepted for amendments made by other persons