



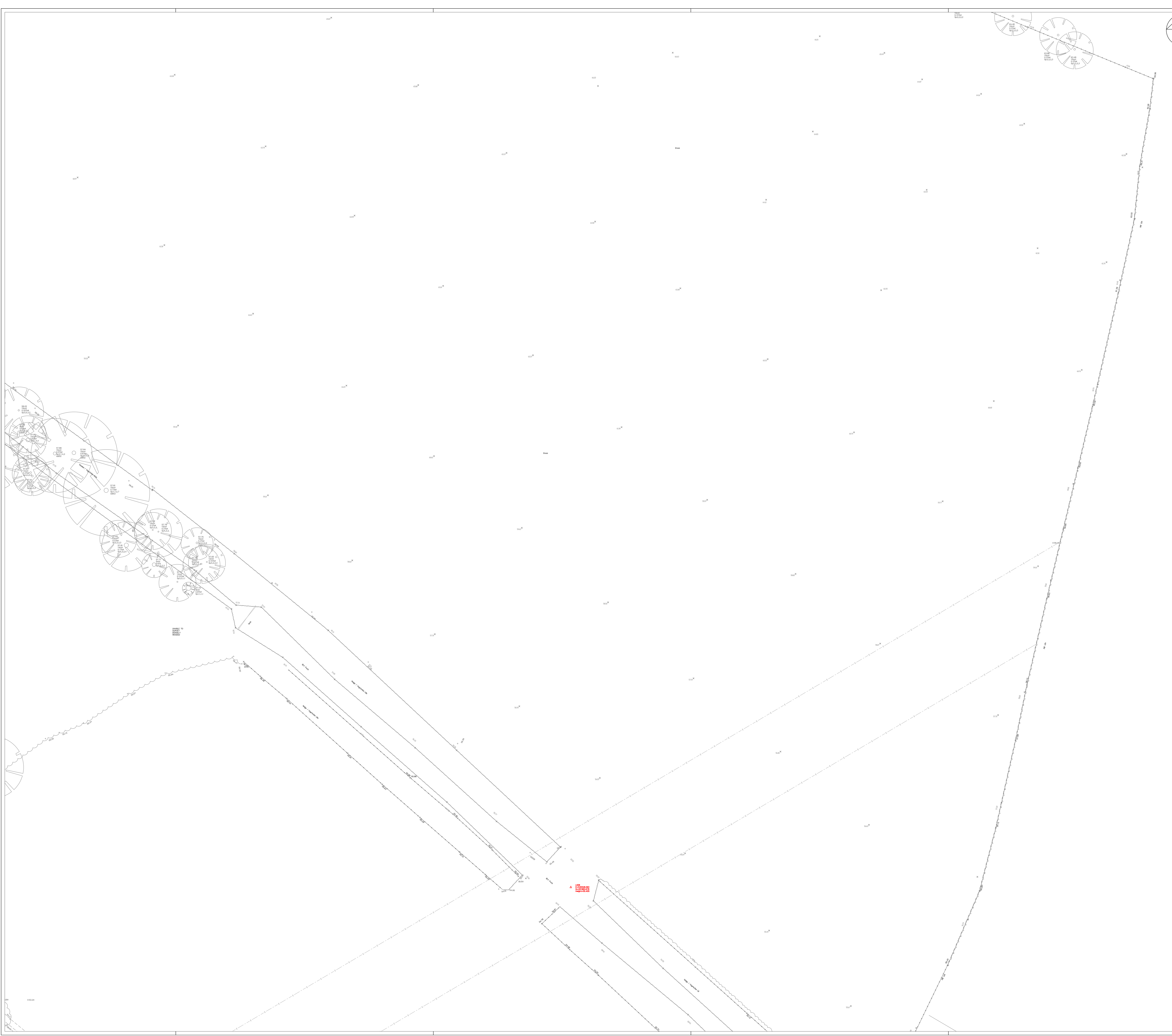
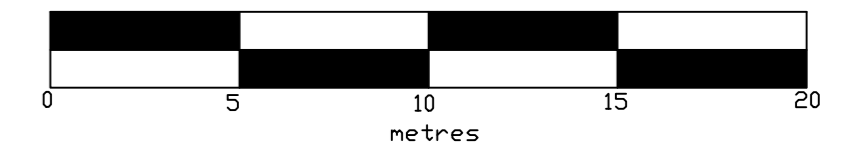
Topographical Survey

Land surrounding Cuffley Football Club

Sheet 7 of 10
August 2014

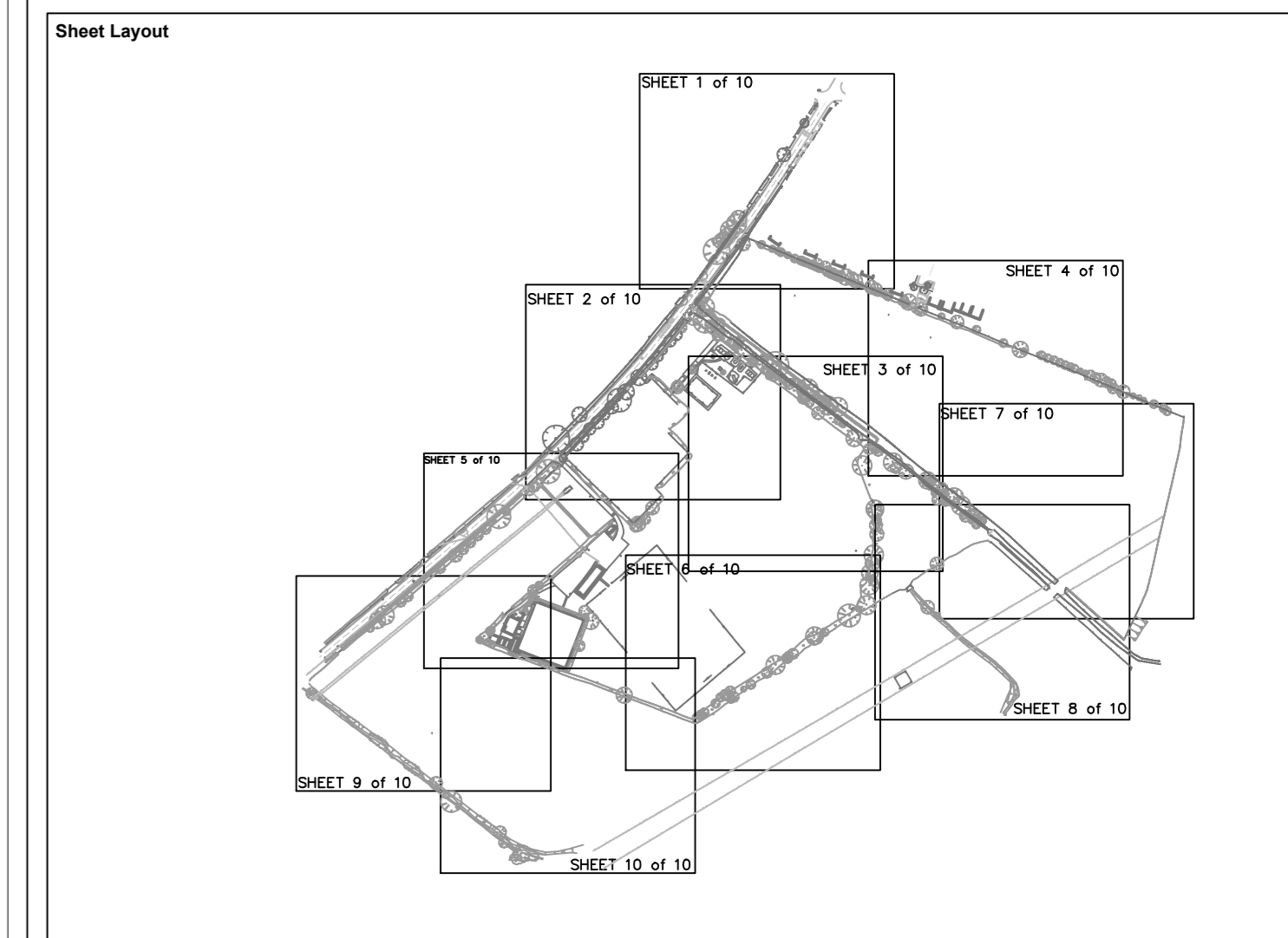
Scale
1:200

Horizontal Datum: Supplied by client
Vertical Datum: Supplied by client
Units: Metres



Survey Notes

1) This drawing contains elements from drawing S-06-431-01 as supplied by client.
2) The survey control is based on the following stations within the above drawing
S2 E030189.248 N202117.793 Level 62.74
S3 E630247.144 N202176.436



Legend

	Survey Control Station		Tee with elevation, height in metres and spread to scale
	Spot Level N.B. Spot levels at road edge relate to channel line		Gate
	Major Contour 1m Interval		Top of bank
	Minor Contour 0.5m Interval		Bottom of bank
	Overhead Telecoms		Tee Canopy
	Overhead Electric		Foliage/Hedge edge

Abbreviations

PP	Post and Panel Fenceline	ER	Earth Rod	TPO	Telegraph Pole
PR	Post and Rail Fenceline	MW	Monitoring Well	EPO	Electricity Pole
PW	Post and Wire Fenceline	CR	Cable-Riser	RS	Road Sign
SM	Post and Steel Mesh Fenceline	EPO	Electric Pole	BO - C	Ballard - Concrete
ms	Height in Metres	CAM	Gas Meter	BO - S	Ballard - Steel
IC	Inspection Cover	GSV	Gas Valve	BO - W	Ballard - Wooden
CL	Cover Level	GM	Gas Meter	LB	Liter Bin
G	Gully	GR	Gas Riser	PI	Pillar
DP	Down Pipe	AV	Air Valve	RS	Road Sign
KWP	Rain Water Pipe	WT	Water Tank	TS	Tree Stump
FWP	Foul Water Pipe	WSV	Wash Valve	TCSB	Telephone Call Box
VC	Vent Cover	WM	Wash Water	FP	Flag Pole
RE	Roofing Eave	WO	Wash Out	TP	Traffic Paving
VP	Vent Pipe	SL	Street Light	LA	Ladder
FWS	Foul Water Sewage	PLM	Pipeline Marker	FB	Flower Bed
SWS	Surface Water Sewage	CAB	Street Cabinet	DK	Dropped Kerb

Prepared for: Landis Improvement
10 Lower Goswender Place
London
E9 7W BEN

Surveyed by: C. Whitley, R. Baker
Date: 14th - 22nd August 2014

Drawing Reference	Rev	Date	Description	Drawn By	Checked By	Approved By
1667_200_7	0	28/08/14	First issue	CWH/REB	MBE	MBE

This drawing is the copyright of LandScope Engineering Ltd and may not be reproduced or amended except by written permission. No liability will be accepted for amendments made by other persons