

LandScope Engineering Ltd
The Chart House
Pickerscott
Church Stratton
Shropshire
SY6 6NT
Tel: 01694 731930
Fax: 01694 751343
email: enquires@land-scope.com

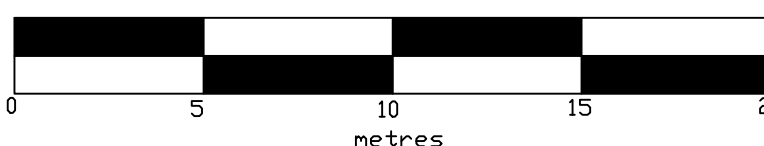
Topographical Survey

Land surrounding Cuffley Football Club

Sheet 7 of 10
August 2014

Scale
1:200

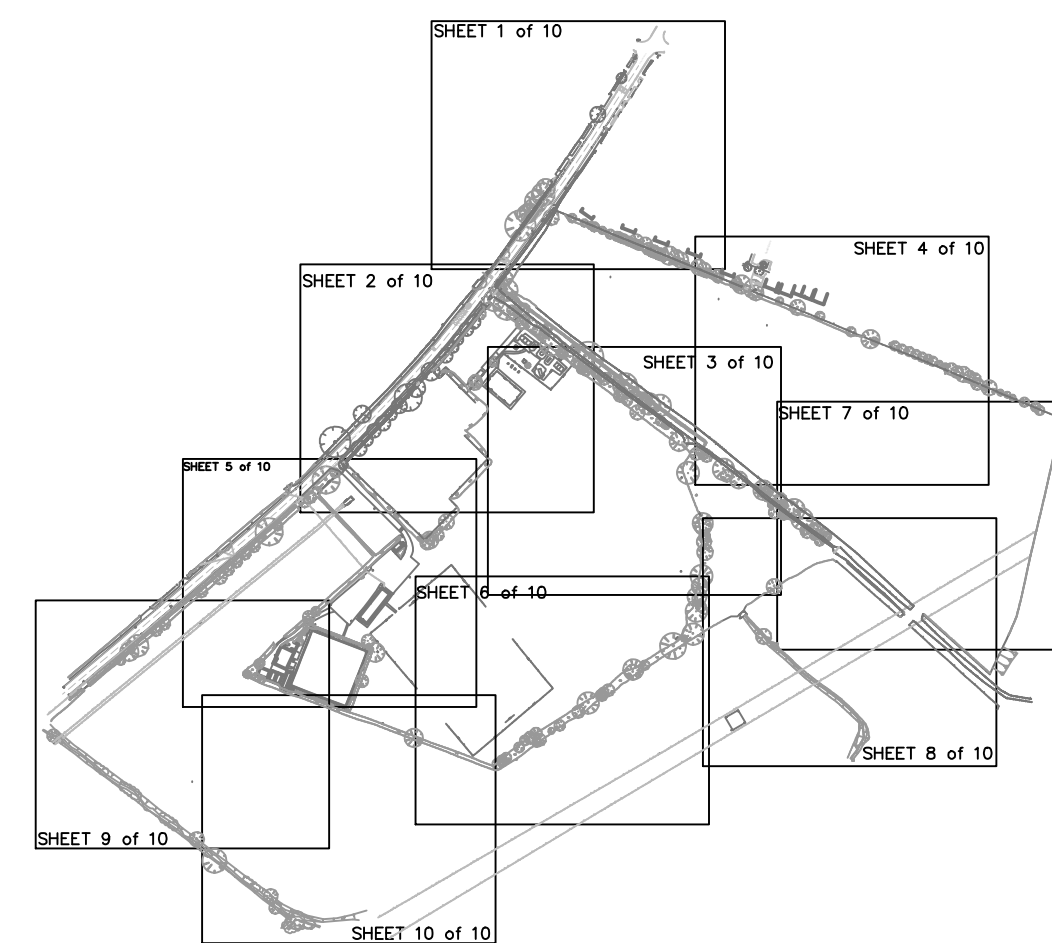
Horizontal Datum: Supplied by client
Vertical Datum: Supplied by client
Units: Metres



Survey Notes

- 1) This drawing contains elements from drawing S-08-431-01 as supplied by client.
- 2) The survey control is based on the following stations within the above drawing
S2 E530159.246 N202117.753 Level 62.74
S3 E530247.144 N202176.436

Sheet Layout



Legend

| | |
|--|---|
| Survey Control Station | Tree with elevation, height in metres and spread to scale |
| Spot Level N.B. Spot levels at road edge relate to channel line | Gate |
| Major Contour 1m Interval | Top of bank |
| Minor Contour 0.5m Interval | Bottom of bank |
| Overhead Telecoms | Tree Canopy |
| Overhead Electric | Foliage/Hedge edge |

Abbreviations

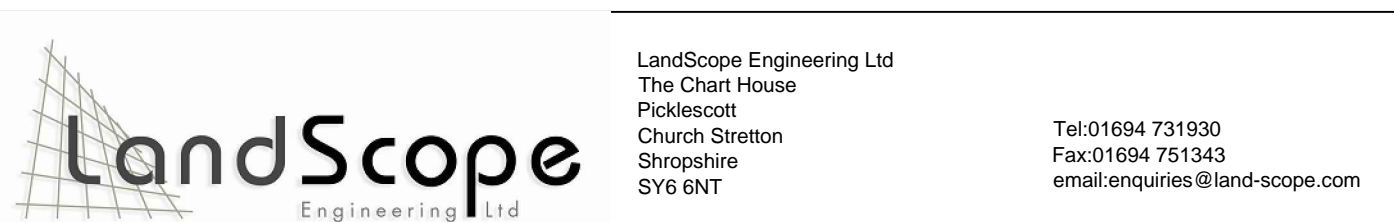
| | | |
|----------------------------------|---------------------|---------------------------|
| PP Post and Panel Fenceline | ER Earth Rod | TPO Telegraph Pole |
| PR Post and Rail Fenceline | MW Monitoring Well | EPO Electricity Pole |
| PRV Post and Wire Fenceline | CR Cable Rider | RS Road Sign |
| SM Post and Steel Mesh Fenceline | EPO Electric Pole | BO - C Bolard - Concrete |
| mm Height in Metres | GM Gas Meter | BO - S Bolard - Steel |
| IC Inspection Cover | GSV Gas Valve | BO - W Bolard - Wooden |
| IL Invert Level | GM Gas Meter | LS Litter Sign |
| CL Cover Level | GR Gas Risar | PI Pillar |
| G Gully | AV Air Valve | TS Tree Slump |
| DP Down Pipe | STP Stop Tap | TSB Telegraph Call Box |
| RWP Rain Water Pipe | WSV Stance Valve | FP Flag Pole |
| FWP Foul Water Pipe | WM Water Meter | TP Tactile Paving |
| VC Vent Cover | WO Wash Out | FP Fuel Pump |
| RE Road Sign | SL Street Light | TL Traffic Induction Loop |
| VP Vent Pipe | PLM Pipeline Marker | LA Ladder |
| FWS Foul Water Sewage | CAB Street Cabinet | FB Flower Bed |
| SWC Surface Water Sewage | | DK Drooped Kerb |

Prepared for: Landis Improvement
10 Lower Grosvenor Place
London
SW1W 0EN

Surveyed by: C. Whalley, R. Baker
Date: 14th - 22nd August 2014

| Drawing Reference | Rev | Date | Description | Flattened | Drawn By | Checked By | Approved By |
|-------------------|-----|----------|-------------|-----------|----------|------------|-------------|
| 1667_200.7 | 0 | 20/08/14 | First issue | 1667_0 | CW/RBA | MB | MB |

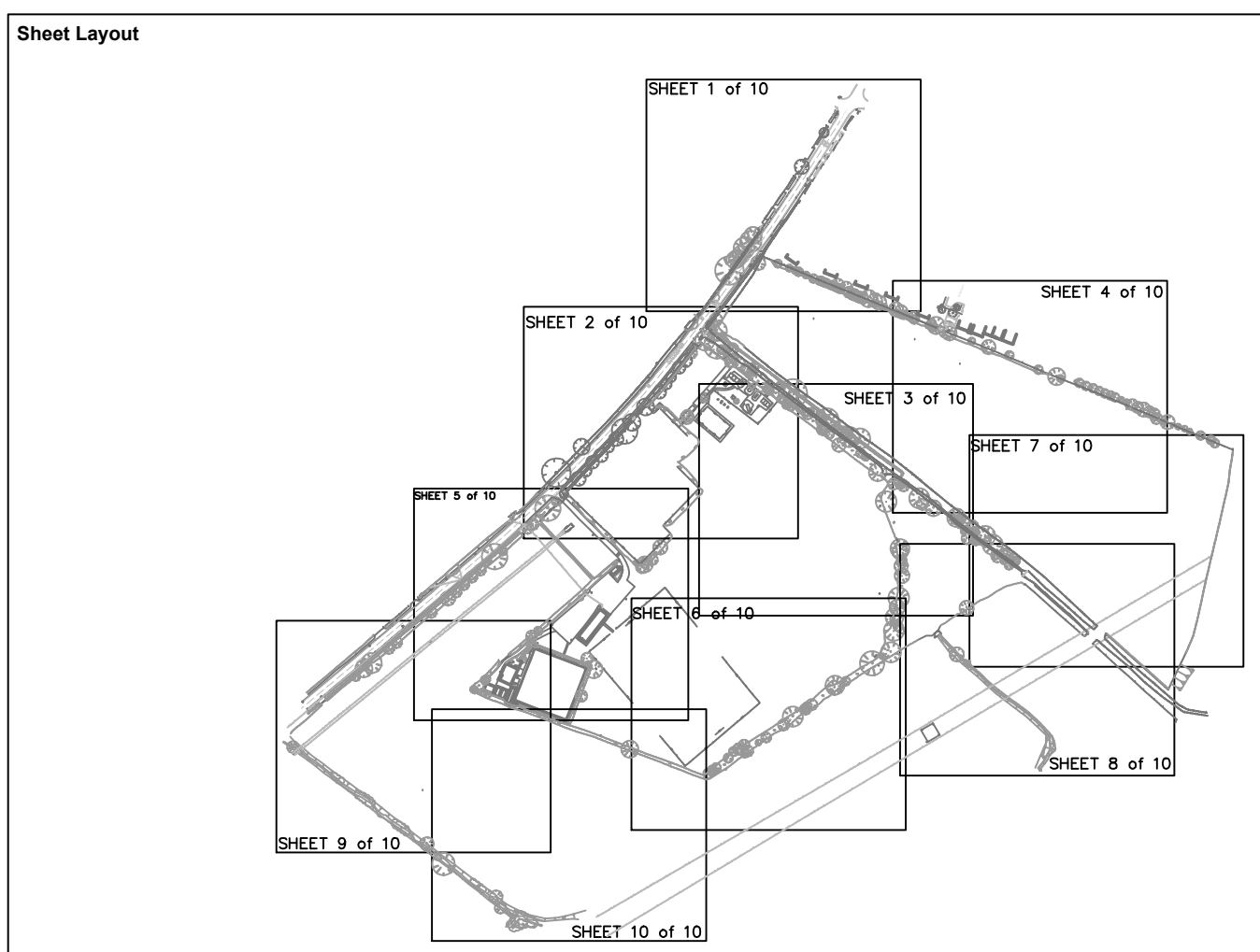
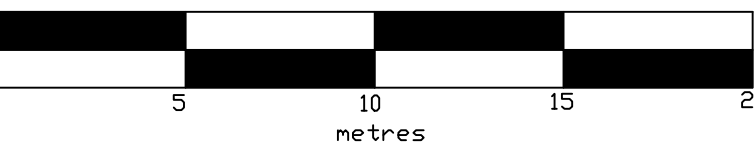
This drawing is the copyright of LandScope Engineering Ltd and may not be reproduced or amended except by written permission. No liability will be accepted for amendments made by other persons

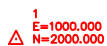







Land surrounding Cuffley Football Club

Scale
1:200

Horizontal Datum: Supplied by client
Vertical Datum: Supplied by client
Units: Metres



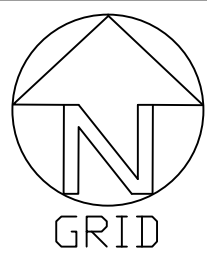
| Legend | | |
|---|------------------------|---|
|  <p>Spot Level</p> <p>N.B. Spot levels at road edge relate to channel line</p> | Survey Control Station | Tree with elevation, height in metres and spot level to scale |
|  <p>X 1:100</p> | | Gate |
|  <p>Major Control 1m Interval</p> | | Top of bank |
|  <p>Minor Control 0.5m Interval</p> | | Bottom of bank |
|  <p>Overhead Telecom</p> | | Tree Canopy |
|  <p>Overhead Electric</p> | | Foliage/Hedge edge |

[illegible]

Prepared for: **Lands Improvement**
10 Lower Grosvenor Place
London
SW1W 0EN

| | | | | | | | |
|-----------------------------------|-----|----------|-------------|----------|----------|------------|-------------|
| Surveyed by: C. Whitley, R. Baker | | | | | | | |
| Date: 14th - 22nd August 2014 | | | | | | | |
| Drawing Reference | Rev | Date | Description | Filename | Drawn By | Checked By | Approved By |
| 1667_00_6 | 0 | 20/08/14 | First issue | 1667_0 | CYN/RSB | MBe | MBe |

This drawing is the copyright of LandScape Engineering Ltd and may not be reproduced or amended except by written permission. No liability will be accepted for amendments made by other persons



LandScope Engineering Ltd
The Chart House
Pickerscott
Church Stratton
Shropshire
SY6 6NT
Tel: 01694 731930
Fax: 01694 751343
email: enquires@land-scope.com

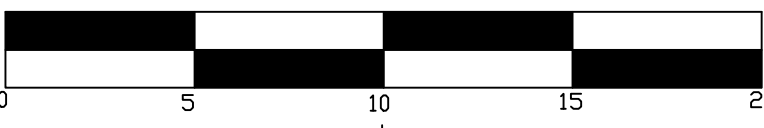
Topographical Survey

Land surrounding Cuffley Football Club

Sheet 5 of 10
August 2014

Scale
1:200

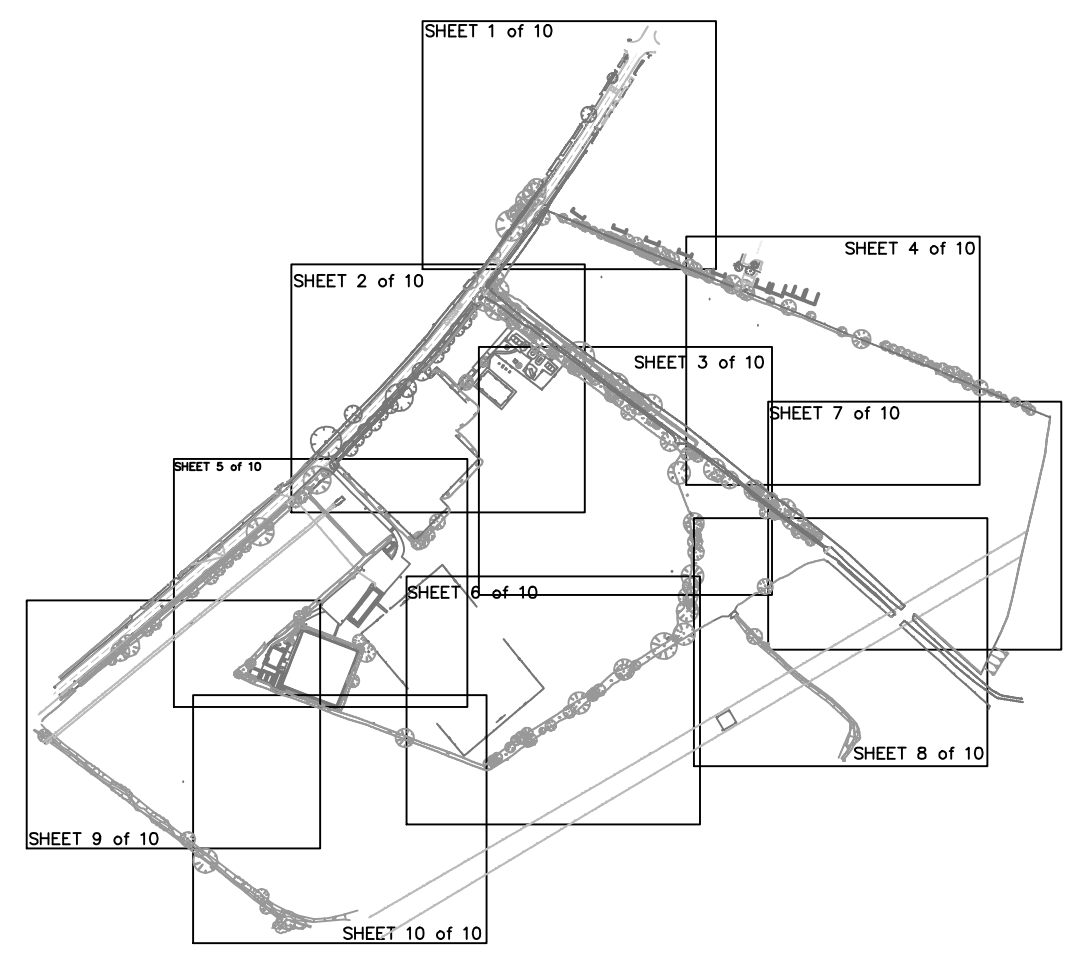
Horizontal Datum: Supplied by client
Vertical Datum: Supplied by client
Units: Metres



Survey Notes

- 1) This drawing contains elements from drawing S-08-431-01 as supplied by client.
- 2) The survey control is based on the following stations within the above drawing
S2 E530159.246 N202117.753 Level 62.74
S3 E530247.144 N202176.436

Sheet Layout



Legend

- | | |
|--|---|
| Survey Control Station | Tree with elevation, height in metres and spread to scale |
| Spot Level N.B. Spot levels at road edge relate to channel line | Gate |
| Major Contour 1m Interval | Top of bank |
| Minor Contour 0.5m Interval | Bottom of bank |
| Overhead Telecoms | Tree Canopy |
| Overhead Electric | Foliage/Hedge edge |

Abbreviations

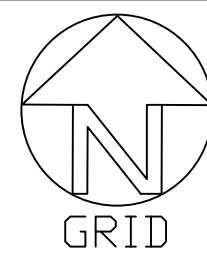
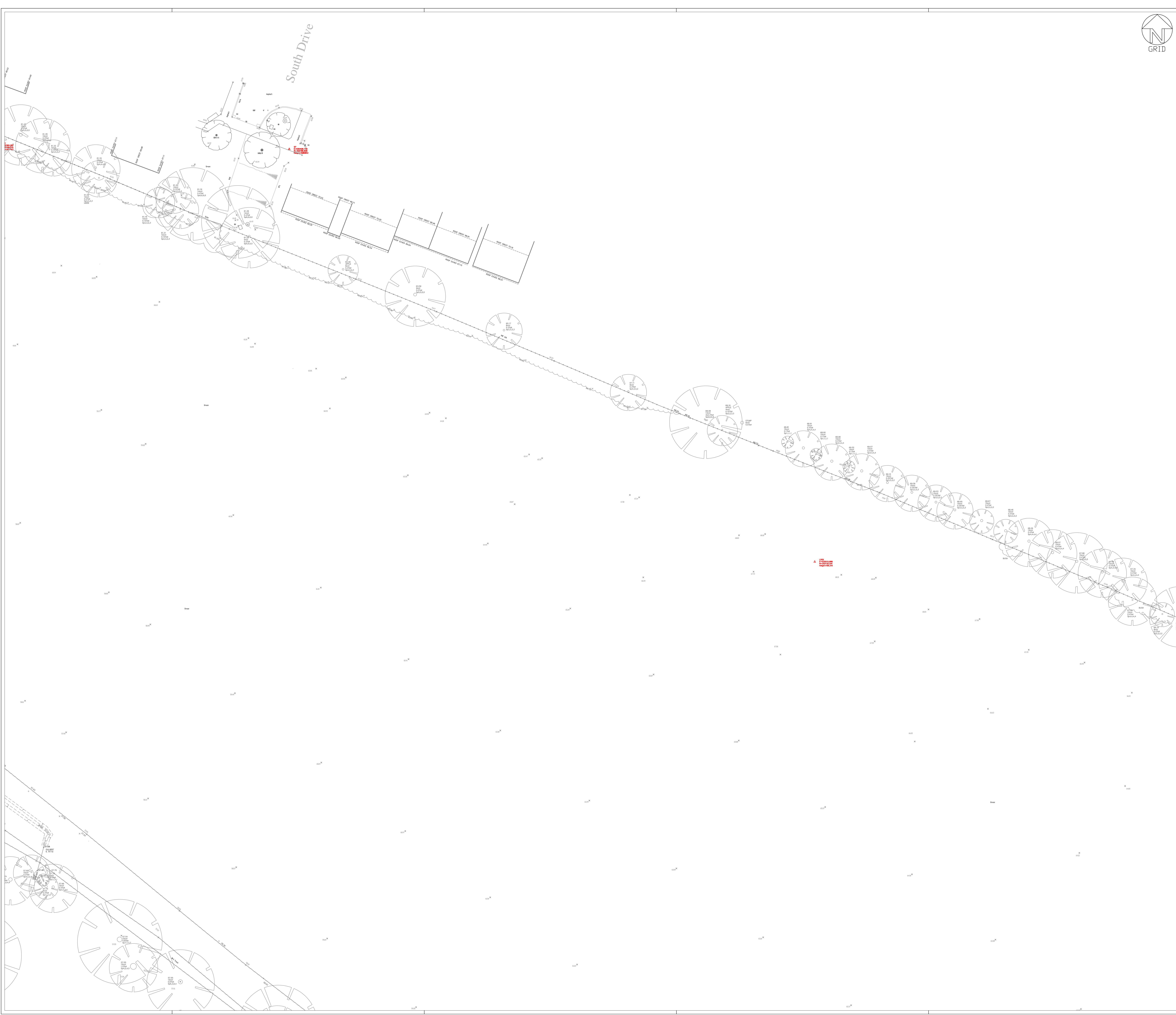
| | | | | | |
|-----|-------------------------------|-----|------------------|--------|--------------------|
| PP | Post and Panel Fenceline | ER | Earth Rod | TPO | Telegraph Pole |
| PR | Post and Rail Fenceline | MW | Monitoring Well | EPO | Electric Pole |
| PM | Post and Wire Fenceline | CR | Cable Rider | RS | Road Sign |
| SM | Post and Steel Mesh Fenceline | EPO | Electric Pole | BO - C | Bolton - Concrete |
| mh | Height in Metres | GSV | Gas Valve | BO - S | Bolton - Steel |
| IC | Inspection Cover | GM | Gas Meter | BO - W | Bolton - Wooden |
| CL | Cover Level | GR | Gas Riser | LS | Letter Sign |
| IL | Invert Level | AV | Air Valve | PI | Pillar |
| G | Gully | ST | Stop Tap | RS | Road Sign |
| DP | Down Pipe | WSV | Water Stop Valve | TS | Tree Slump |
| RWP | Rain Water Pipe | WM | Water Meter | TSB | Telephone Call Box |
| FP | Foul Water Pipe | WO | Wash Out | FP | Flag Pole |
| VC | Vent Cover | SL | Street Light | TP | Traffic Planning |
| RE | Road Edge | PLM | Pipeline Marker | FP | Fuel Pump |
| VP | Vent Pipe | CAB | Street Cabinet | LA | Landscape |
| FWS | Foul Water Sewage | | | FB | Flow Bed |
| SWC | Surface Water Sewage | | | DK | Dropped Kerb |

Prepared for: Landis Improvement
10 Lower Grosvenor Place
London
SW1W 0EN

Surveyed by: C. Whalley, R. Baker
Date: 14th - 22nd August 2014

| Drawing Reference | Rev | Date | Description | Flattened | Drawn By | Checked By | Approved By |
|-------------------|-----|----------|-------------|-----------|----------|------------|-------------|
| 1667-200-5 | 0 | 20/08/14 | First issue | 1667-0 | CW/RSB | MB | MB |

This drawing is the copyright of LandScope Engineering Ltd and may not be reproduced or amended except by written permission. No liability will be accepted for amendments made by other persons



LandScape Engineering Ltd
The Chart House
Pickerscott
Church Stratton
Shropshire
SY6 6NT

Tel: 01694 731930
Fax: 01694 751343
email: enquiries@land-scope.com

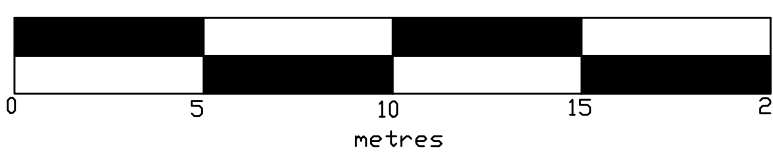
Topographical Survey

Land surrounding Cuffley Football Club

Sheet 4 of 10
August 2014

Scale
1:200

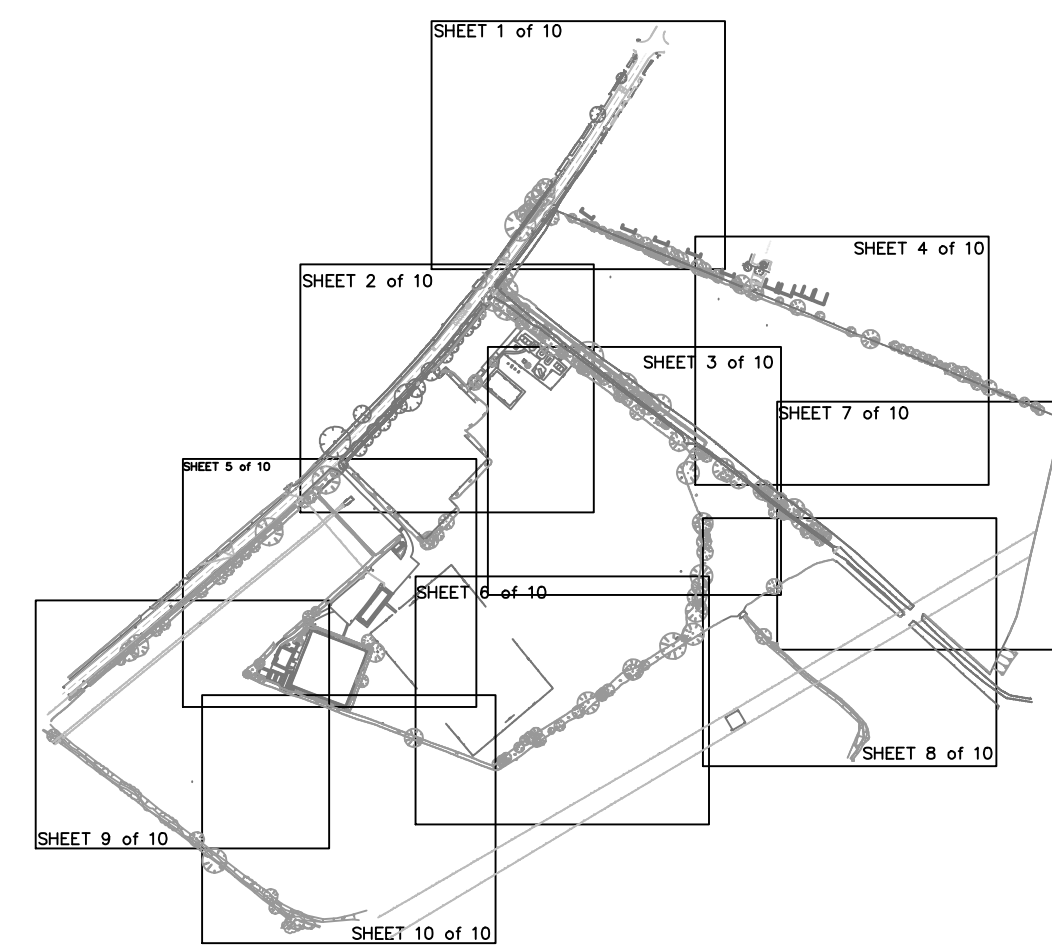
Horizontal Datum: Supplied by client
Vertical Datum: Supplied by client
Units: Metres



Survey Notes

- 1) This drawing contains elements from drawing S-08-431-01 as supplied by client.
- 2) The survey control is based on the following stations within the above drawing
S2 E530159.248 N202117.753 Level 62.74
S3 E530247.144 N202176.436

Sheet Layout



Legend

| | | | |
|--|--|--|---|
| | Survey Control Station | | Tree with elevation, height in metres and spread to scale |
| | Spot Level | | Gate |
| | N.B. Spot levels at road edge relate to channel line | | Top of bank |
| | Major Contour 1m Interval | | Bottom of bank |
| | Minor Contour 0.5m Interval | | Tree Canopy |
| | Overhead Telecoms | | Foliage/Hedge edge |
| | Overhead Electric | | |

Abbreviations

| | | | | | |
|-----|-------------------------------|------|-----------------|--------|------------------------|
| PP | Post and Panel Fenceline | ER | Earth Rod | TPO | Telegraph Pole |
| PR | Post and Rail Fenceline | MW | Monitoring Well | EPO | Electricity Pole |
| PRV | Post and Wire Fenceline | CS | Cable Rider | RS | Road Sign |
| SM | Post and Steel Mesh Fenceline | EPO | Electric Pole | BO - C | Bollard - Concrete |
| mt | Height in Metres | | | BO - S | Bollard - Steel |
| IC | Inspection Cover | GSV | Gas Valve | BO - W | Bollard - Wooden |
| IL | Invert Level | GM | Gas Meter | LS | Liter Sign |
| CL | Cover Level | GR | Gas Risar | PI | Pillar |
| G | Gully | AV | Air Valve | RS | Road Sign |
| DP | Down Pipe | WEST | Stop Tap | TS | Tree Slump |
| RWP | Rain Water Pipe | WSV | Stance Valve | YCB | Telephone Call Box |
| FWP | Foul Water Pipe | WM | Water Meter | FP | Flag Pole |
| VC | Vent Cover | WO | Wash Out | FP | Fuel Pump |
| RE | Roofing Eye | SL | Street Light | TL | Traffic Induction Loop |
| VP | Vent Pipe | PLM | Pipeline Marker | LA | Ladder |
| FWS | Foul Water Sewage | CAB | Street Cabinet | FB | Flower Bed |
| SWC | Surface Water Sewage | | | DK | Dropped Kerb |

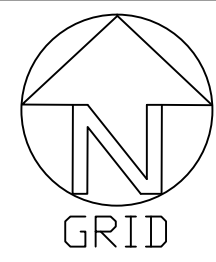
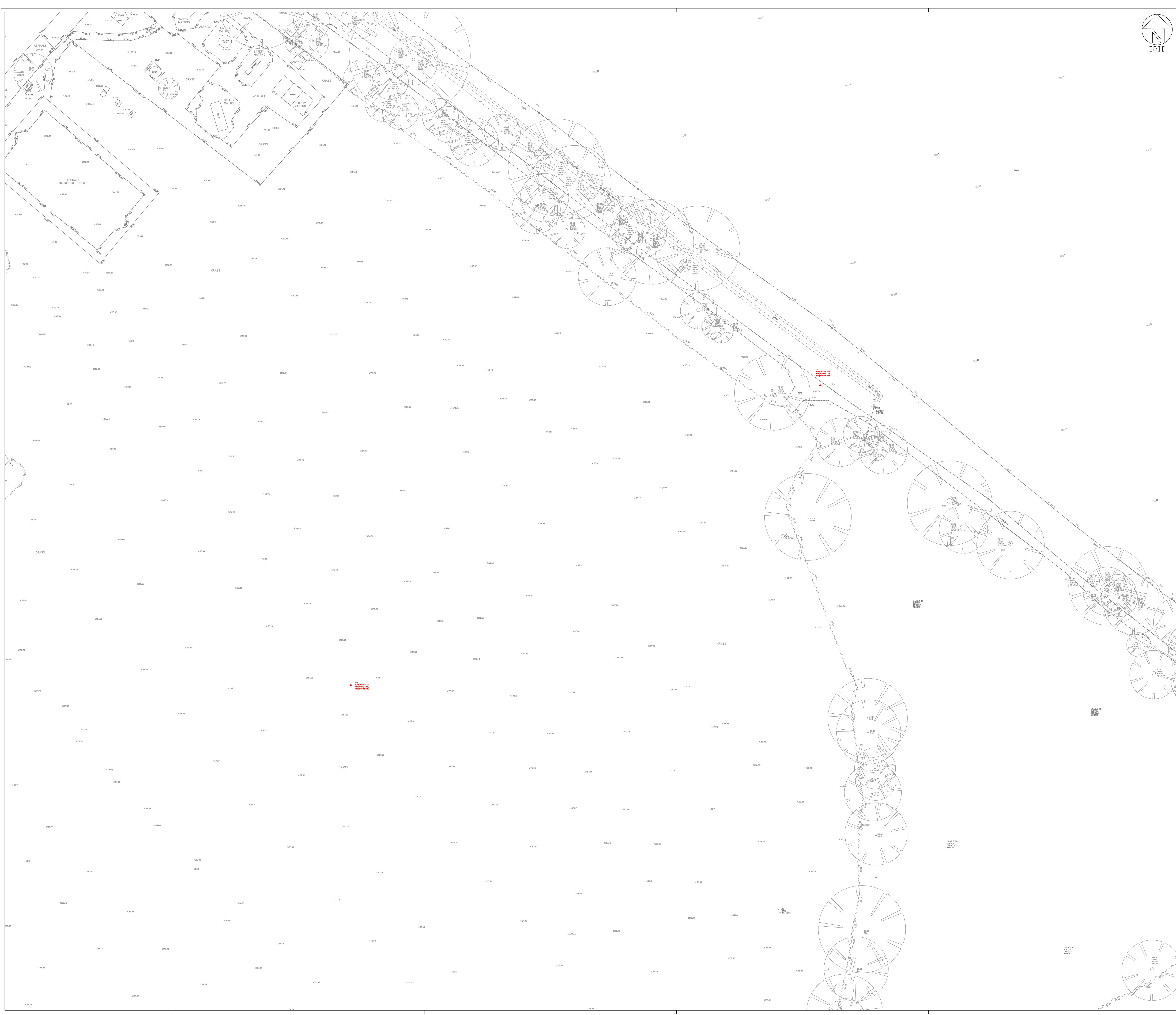
Prepared for: Landis Improvement
10 Lower Grosvenor Place
London
SW1W 0EN

Surveyed by: C. Whiteley, R. Baker

Date: 14th - 22nd August 2014

| Drawing Reference | Rev | Date | Description | Filename | Drawn By | Checked By | Approved By |
|-------------------|-----|----------|-------------|----------|----------|------------|-------------|
| 1667-200-4 | 0 | 20/08/14 | First issue | 1667_0 | CW/RSB | MB | MB |

This drawing is the copyright of LandScape Engineering Ltd and may not be reproduced or amended except by written permission. No liability will be accepted for amendments made by other persons



LandScope Engineering Ltd
The Chair House
Pickerscott
Church Stratton
Shropshire
SY6 6NT

Tel: 01694 731930
Fax: 01694 751343
email: enquiries@land-scope.com

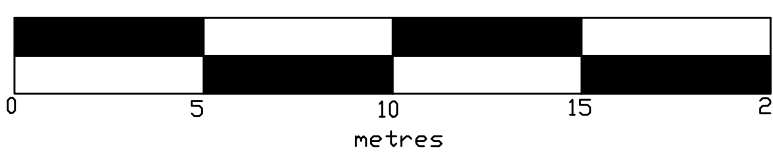
Topographical Survey

Land surrounding Cuffley Football Club

Sheet 3 of 10
August 2014

Scale
1:200

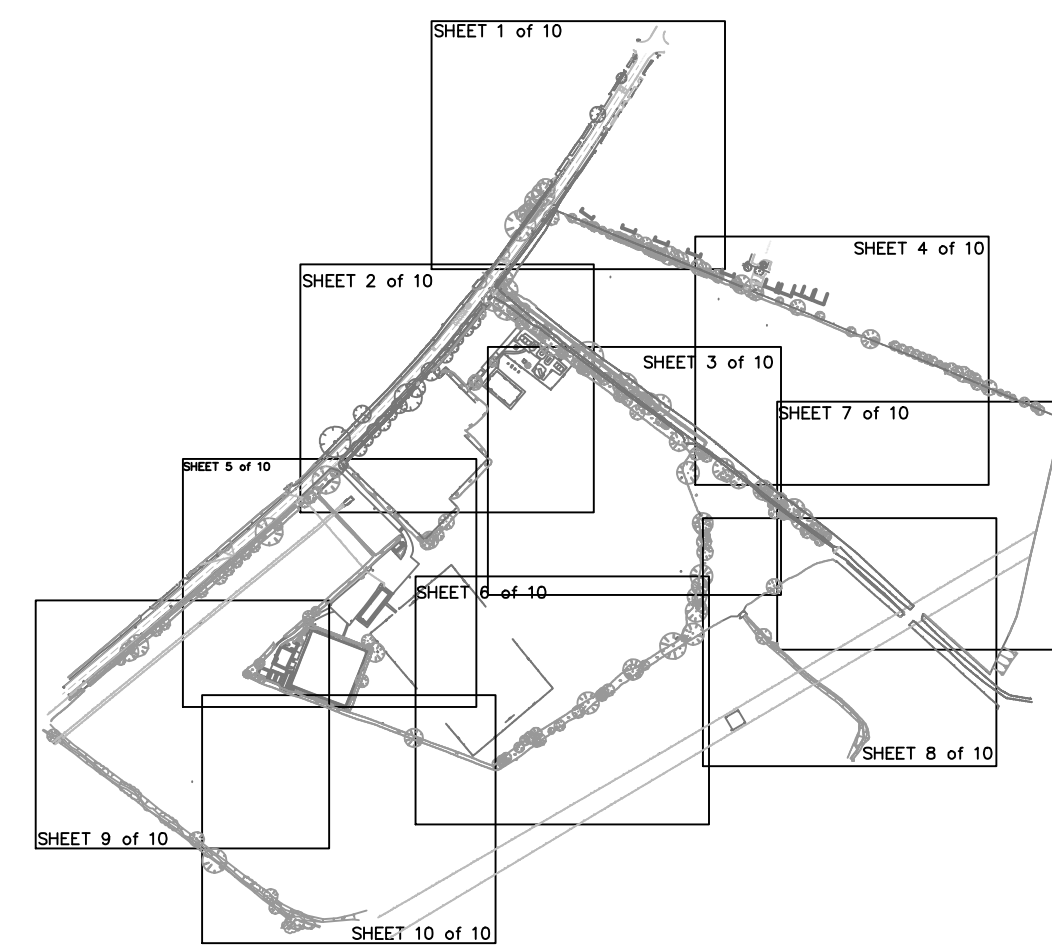
Horizontal Datum: Supplied by client
Vertical Datum: Supplied by client
Units: Metres



Survey Notes

- 1) This drawing contains elements from drawing S-08-431-01 as supplied by client.
- 2) The survey control is based on the following stations within the above drawing
S2 E530159.248 N202117.753 Level 62.74
S3 E530247.144 N202176.436

Sheet Layout



Legend

- | | | |
|---------------------------|--|---|
| Survey Control Station | Spot Level N.B. Spot levels at road edge relate to channel line | Tree with elevation, height in metres and spread to scale |
| Major Contour 1m Interval | Minor Contour 0.5m Interval | Gate |
| Overhead Telecoms | Overhead Electric | Top of bank |
| | | Bottom of bank |
| | | Tree Canopy |
| | | Foliage/Hedge edge |

Abbreviations

| | | | | | |
|--|---|---|---|--|---|
| PP PR PW SM mH | Post and Panel Fenceline Post and Rail Fenceline Post and Wire Fenceline Post and Steel Mesh Fenceline Height in Metres | ER MW CS EPO GVS GM GR | Earth Rod Monitoring Well Cable Rider Electric Pole Gas Valve Gas Meter Gas Risar | TPO EPO RS BO - C BO - S BO - W LS RS | Telegraph Pole Electric Pole Road Sign Bollard - Concrete Bollard - Steel Bollard - Wooden Litter Bin Pillar |
| IC IL G DP RW/P F/P VC RE VP FWS SVC | Inspection Cover Cover Level Dish Rain Water Pipe Foul Water Pipe Vent Cover Roofing Eye Foul Water Sewage Surface Water Sewage | AV WEST WSV WM WO SL PLM CAB | Air Valve Stop Tap Sludge Valve Water Meter Wash Out Street Light Pipeline Marker Street Cabinet | TS TCB FP TP FP TL LA FB DK | Tree Slump Telephone Call Box Flag Pole Tackle Piling Fuel Pump Traffic Induction Loop Ladder Fuel Bed Dropped Kerb |

Prepared for: Landis Improvement
10 Lower Grosvenor Place
London
SW1W 0EN

Surveyed by: C. Whalley, R. Baker

Date: 14th - 22nd August 2014

| Drawing Reference | Rev | Date | Description | Flattened | Drawn By | Checked By | Approved By |
|-------------------|-----|----------|-------------|-----------|----------|------------|-------------|
| 1667-200-3 | 0 | 20/08/14 | First issue | 1667-0 | CW/RBA | MB | MB |

This drawing is the copyright of LandScope Engineering Ltd and may not be reproduced or amended except by written permission. No liability will be accepted for amendments made by other persons