

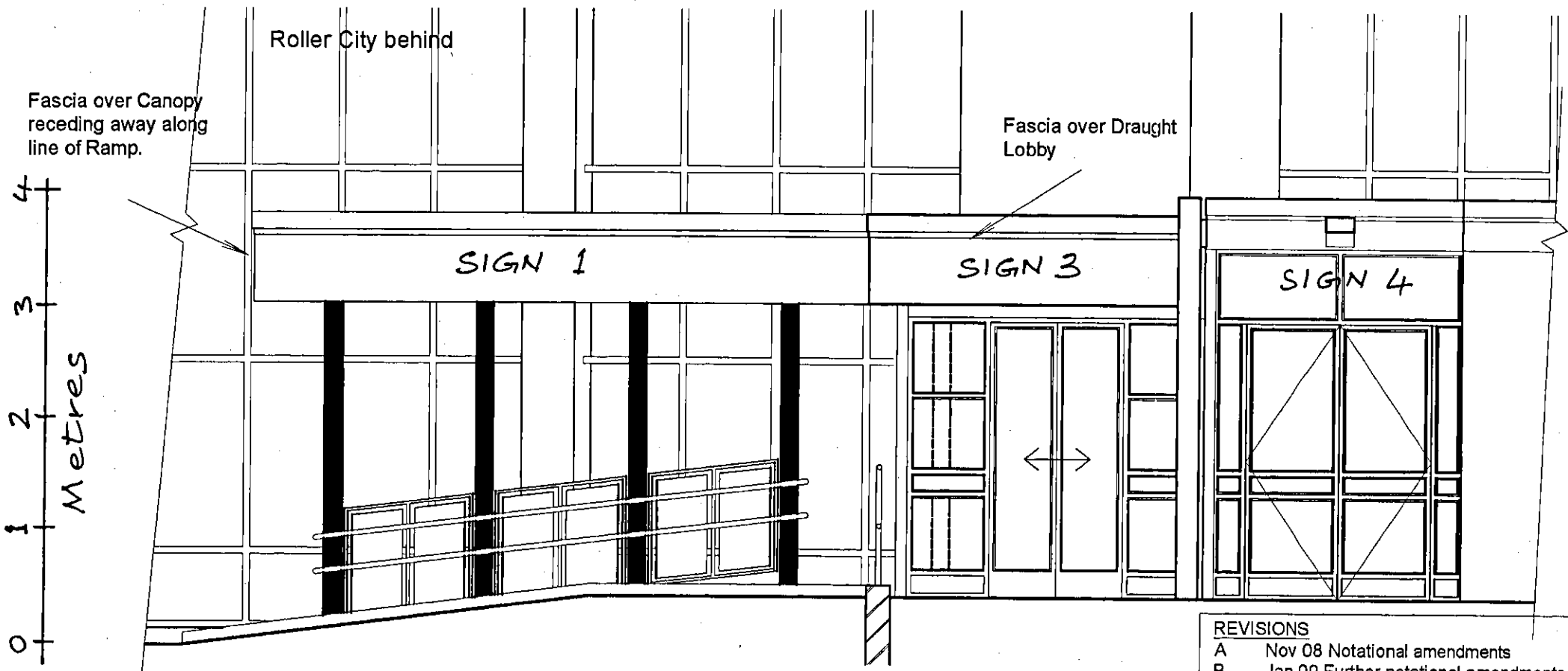
Perforated polyester powder coated infill panels to balustrading rails between posts.  
New twin handrails in thick nylon coated aluminium or steel rail system.

Canopy support columns following line of ramp

**SOUTH WESTERN ELEVATION**

WELWYN HATFIELD  
PLANNING  
OFFICE COPY  
**21 DEC 2009**  
**2009/2715**  
No: \_\_\_\_\_

Entrance Canopy supply and installation is to include:  
Purpose made Gull Wing Canopy structure including glazed polycarbonate panels and solid aluminium panels secured by extruded aluminium H section and supported by fabricated arms.  
Drainage is to be by a fabricated aluminium channel located above the support spine with downpipes as indicated.  
The main column legs are to be circular hollow sections fitted by baseplates to concrete pad foundations as specified by the structural engineer and installed by the main contractor.  
The main canopy members are to be in mild steel, hot dip galvanised after fabrication prior to finishing in polyester powder to RAL 5000.  
Also to be included are twin handrails and balustrade panels. PPC colour: 'Honeysuckle' Syntha Pulvin G2C 0434 Gloss  
This drawing to be read in conjunction with drawing nos 384.204C and 384.212A



**SOUTH EASTERN ELEVATION**

**REVISIONS**  
A Nov 08 Notational amendments  
B Jan 09 Further notational amendments.  
C Apr 09 Top edge detail of fascias clarified. Specific colours noted.  
D Apr 09 Amendments to Glazing details

Project: **CAMPUS WEST, WELWYN GARDEN CITY ALTERATIONS TO ENTRANCE 1**

Drawing: **DRAUGHT LOBBY AND CANOPY ELEVATIONS SHEET 1**

Do not erase. This drawing must not be reproduced in whole or part without consent. Work only to figured dimensions which are to be checked on site, advise of any discrepancies.

**RNA**  
Robert Noble Associates Ltd  
Architectural Technologists, CIM Coordinators,  
Designers and Consultants  
1000 Park St, Welwyn AL8 6AA, Essex, UK  
Tel: 01992 400000 Fax: 01992 400000

Scale: **1:50 AT A3**  
Date: **OCT 2008**  
Job No: **384**  
Orig No: **203 D**

**A3**