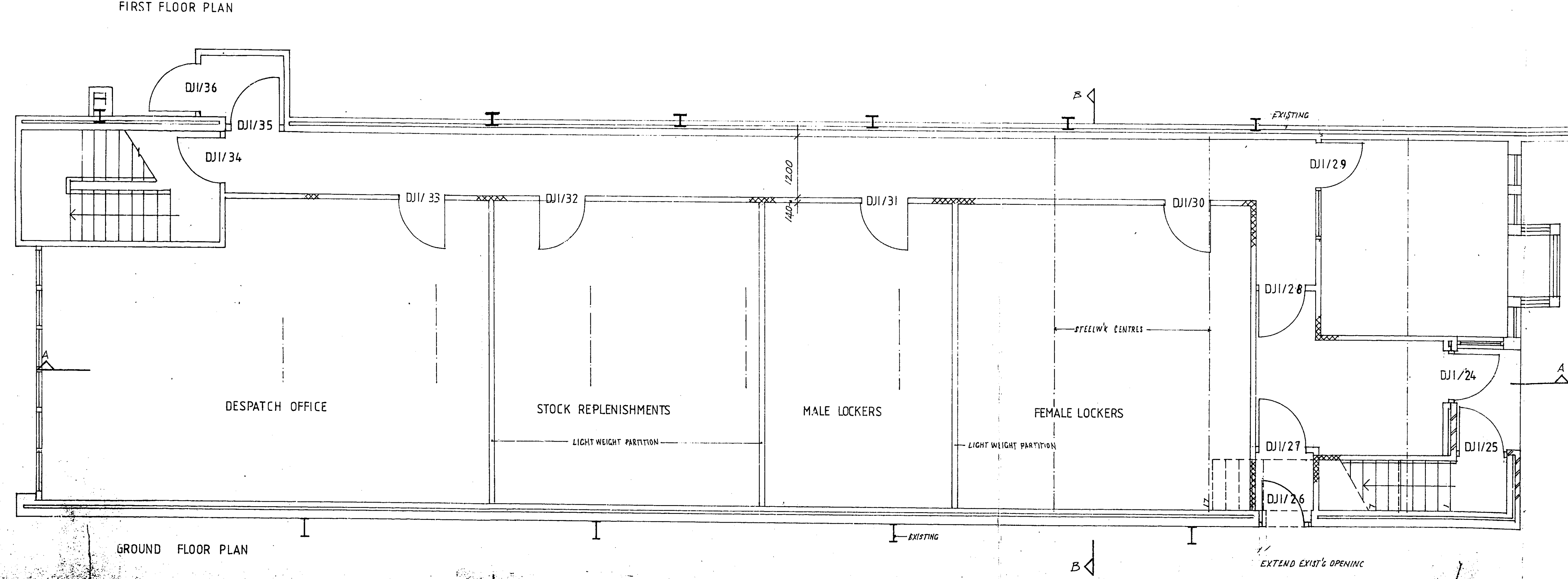
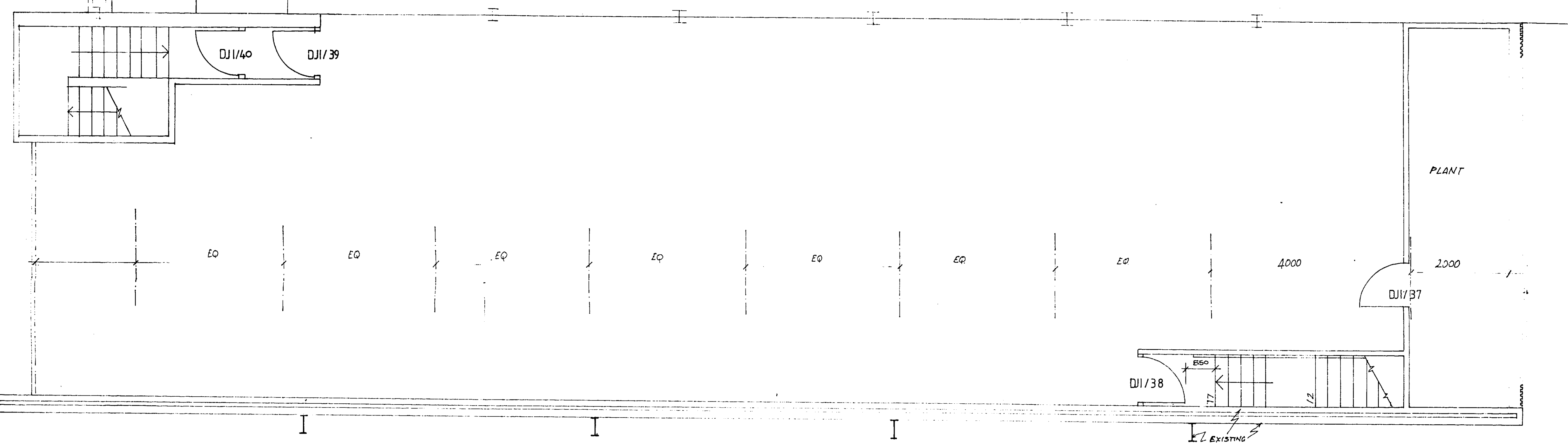
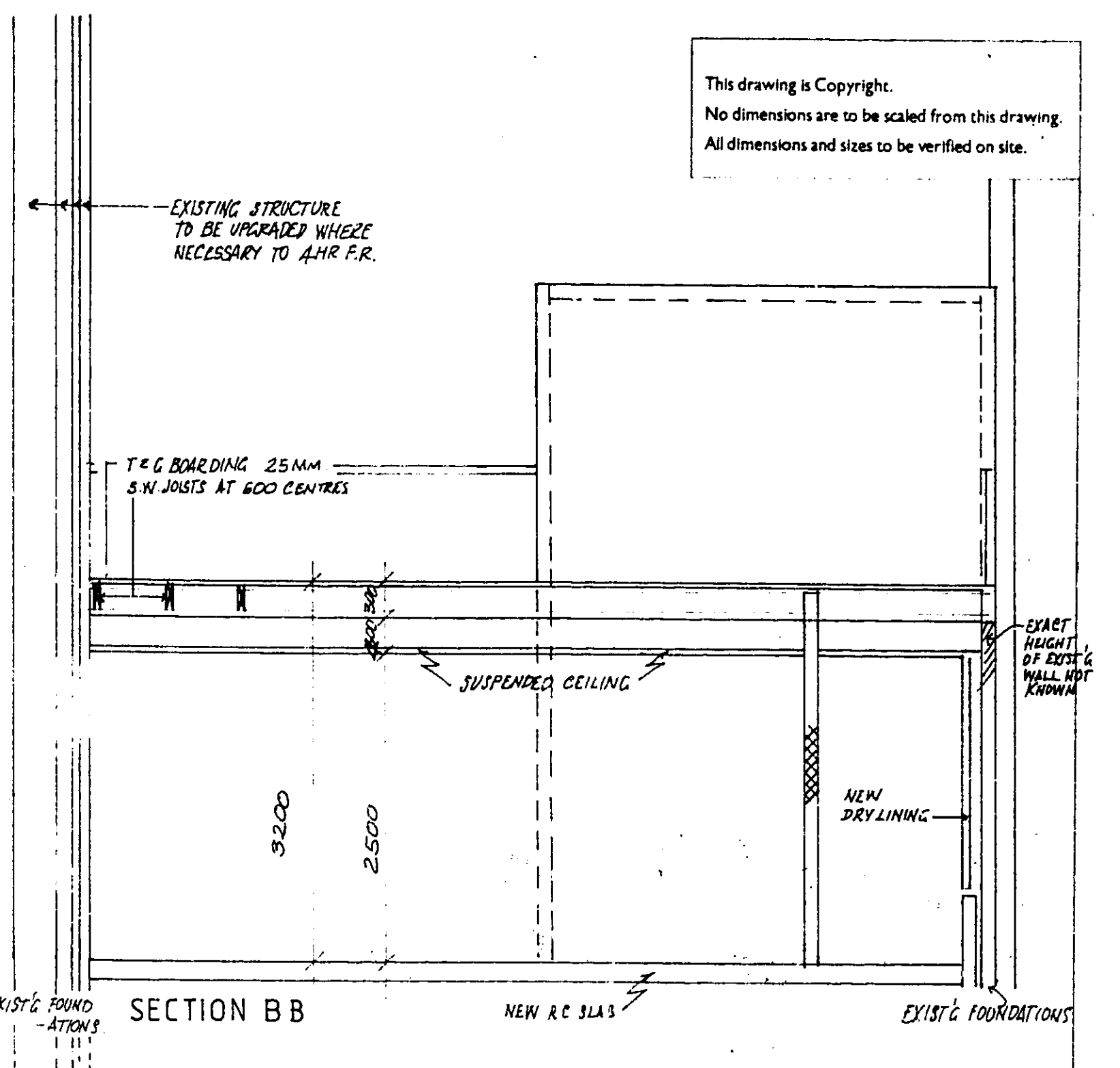
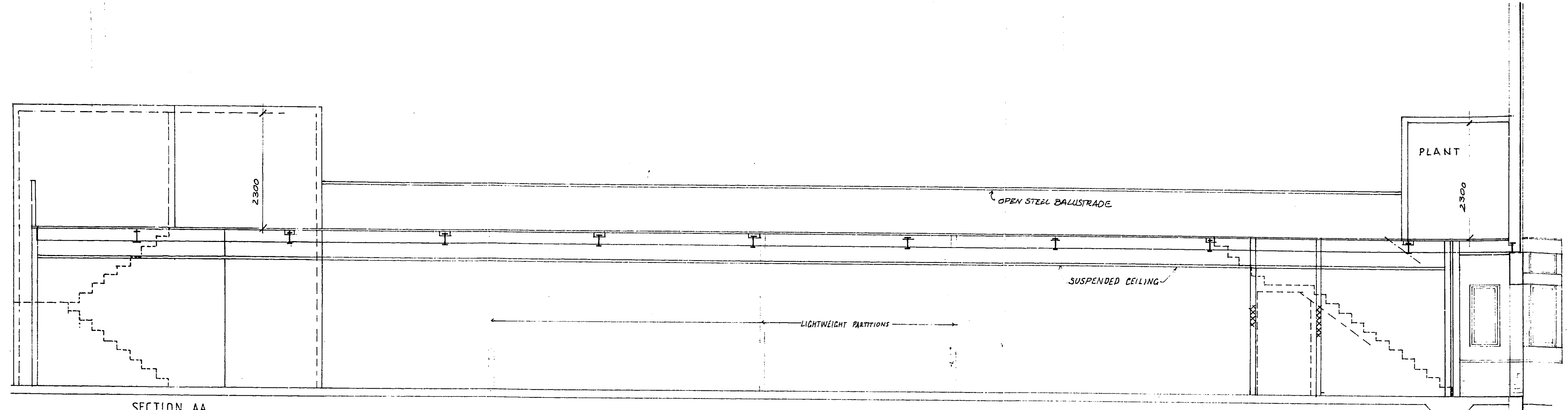


PLANNING FILES BRIDGE RD, W.G.C. C6/152/87 2/3

This drawing is Copyright.
No dimensions are to be scaled from this drawing.
All dimensions and sizes to be verified on site.



WELWYN HATFIELD D.C.
TOWN & COUNTRY PLANNING ACT 1971
PLANNING PERMISSION NO. 15/87/5018/1
Date 15.5.87

OFFICE COPY

WELWYN HATFIELD D.C.
RECEIVED 25 FEB 1987
C6/152/87

APPROVED BY DJ/SC ALTERED JB C				
15/87 PLANS NUMBERED; PL TO FL 3200				
STAIRCASE ON K1 GRID MAILED				
LORRY BY 27/2/87 JB B				
15/87 AMENDED 1/2/87 ADDED JB A				
ARGOS WAREHOUSE				
Drawing Title				
LINK BLOCK				
PLANS AND SECTIONS				
Scale				
1:50				
Date				
3.2.87				
Drawing Author				
Drawn DJB				
Job Number	Design Production #	Client Code	Drawing Number	Revision
1458	P	SK	21	c
DAMOND LUCK, GRABOWSKI & PARTNERS				
CHARTERED ARCHITECTS				
12 SUTTON ROAD LONDON W14 6AS				
TELEPHONE 01-439 6701 (PBX)				

WELWYN HATFIELD D.C.

RECEIVED 27 MAR 1987

6/152/87

AMENDMENT

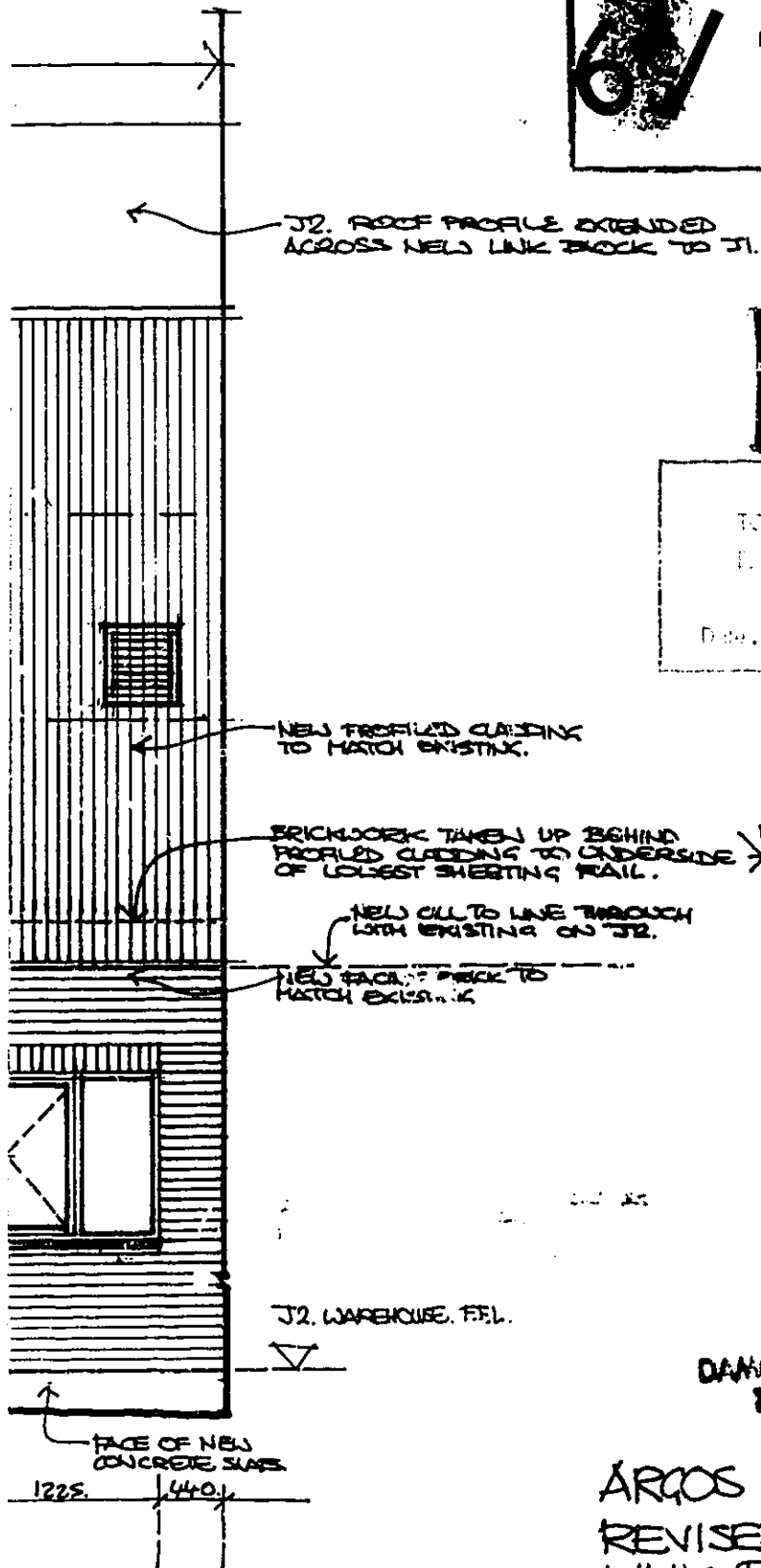
OFFICE COPY

WELWYN HATFIELD D.C.

TOWN & COUNTRY DEVELOPMENT

PLANNING DEPARTMENT

DATE 15-5-87



26/5/87	CANTED BRICK WINDOW SILLS OMITTED	A	B
17/5/87	NARROW BANDS OF PROFILED CLADDING STRIPS AT TOP OF BRICKWORK ON J2. ELEV. LUNDSIES ADDED. SHEETING RAILS INDICATED	A	A
REVISIONS.			

DIAMOND LOCK, GRABOWSKI AND PARTNERS
12 SUTTON ROW, LONDON W1V 6AE

ARGOS WAREHOUSE, WELWYN GDN CITY.
REVISED SOUTH ELEVATION TO NEW
LINK BLOCK.

1458/P2-147.B.

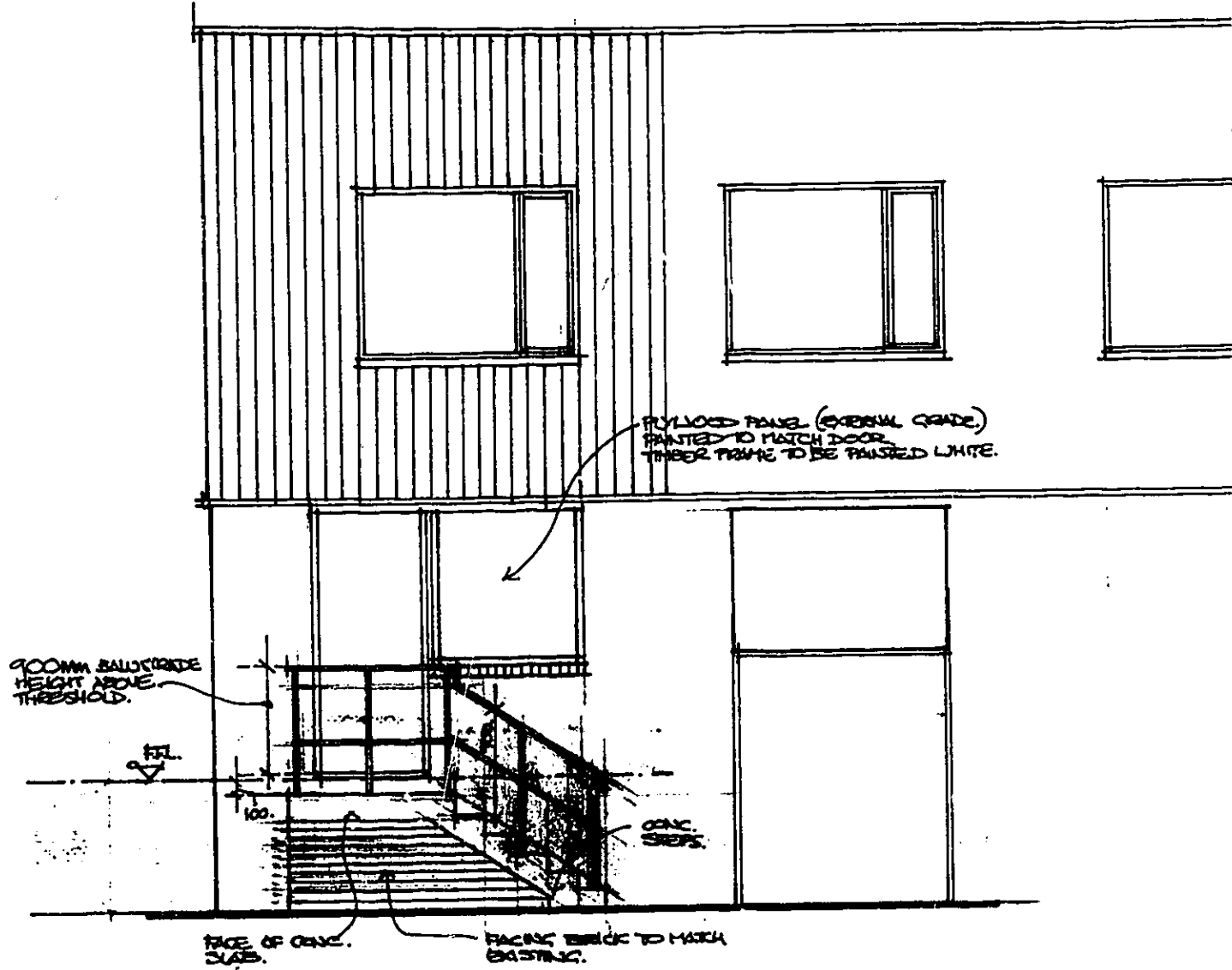
SCALE 1:50

ARCO'S WAREHOUSE: WELLYN CON CITY. : 1458/P2-31 B.

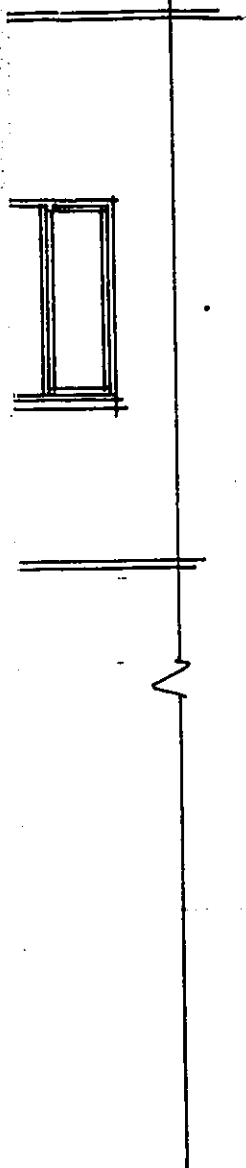
NORTH-EAST CORNER TO ANCILLARY OFFICES:
NEW DOOR OPENING & STEPS TO KITCHEN.

SCALE: 1:50.

STAIRCASE:
TOTAL RISE
= 1070mm
R = 161.6
CONC = 2



(INC. STEP AT THRESHOLD)
(CONTROLLED'S SPEED)
MR.
COMM.



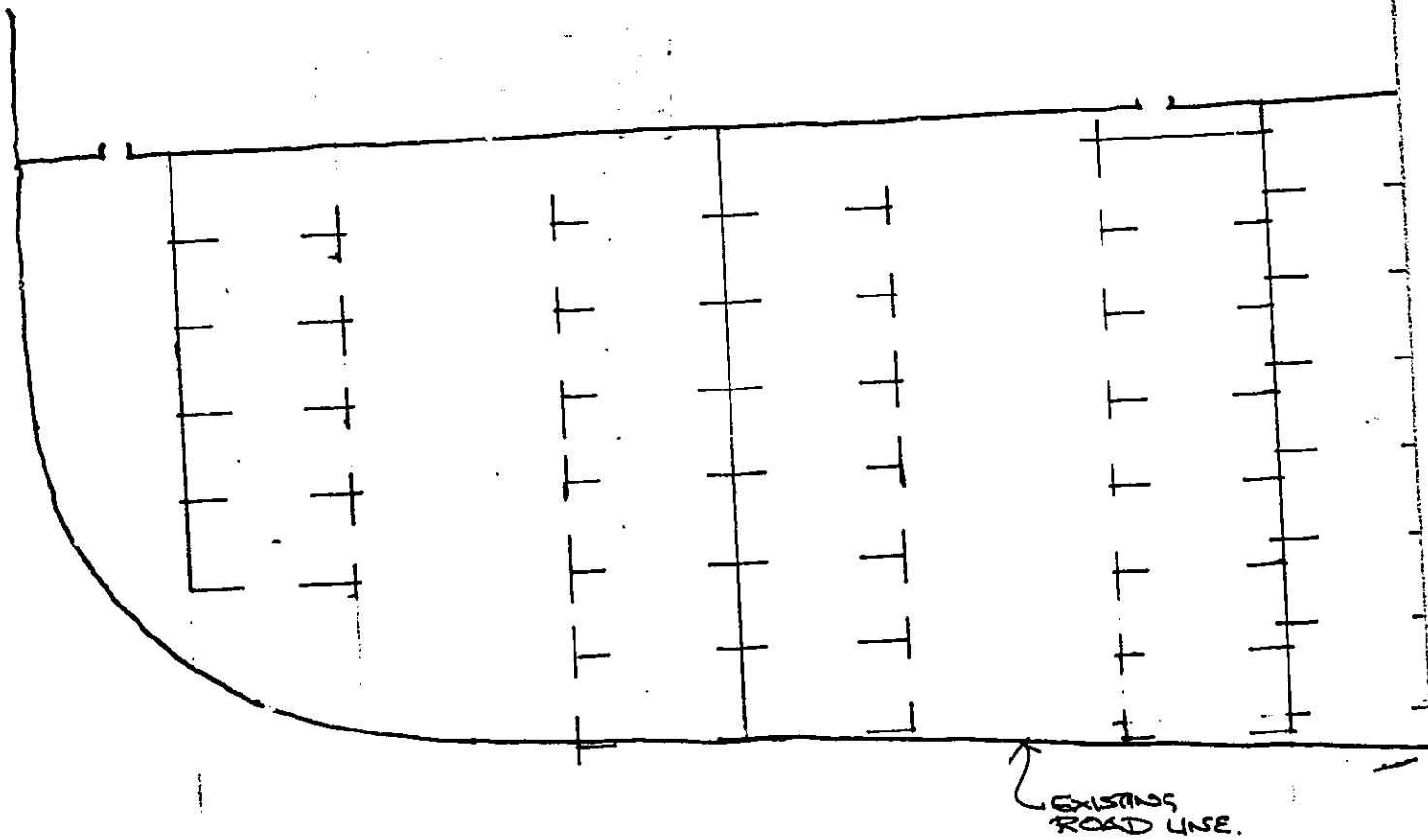
WELWYN HATFIELD D.C.
TOWN & COUNTY OF WILTSHIRE
PLANNING DEPARTMENT
DATE 15-5-87

WELWYN HATFIELD D.C.
RECEIVED 21 MAY 1987
6/152/87

OFFICE COPY.

58 SPACES SHOWN ON COUNCIL DWG. 1103-19.
8 SPACES WOULD NOT BE POSSIBLE DUE TO EXISTING
BUILDINGS (NOT CONSTRUCTED FOR ARGOS.)

J2 WAREHOUSE.



ARGOS WAREHOUSE
WELWYN GIN CITY.

1458/PSK/31.

SKETCH TO SHOW LOCAL AUTHORITY CAR
PARKING PROPOSALS IN RELATION TO J2
WAREHOUSE & EXISTING ADJOINING BUILDINGS

SCALE 1:200.

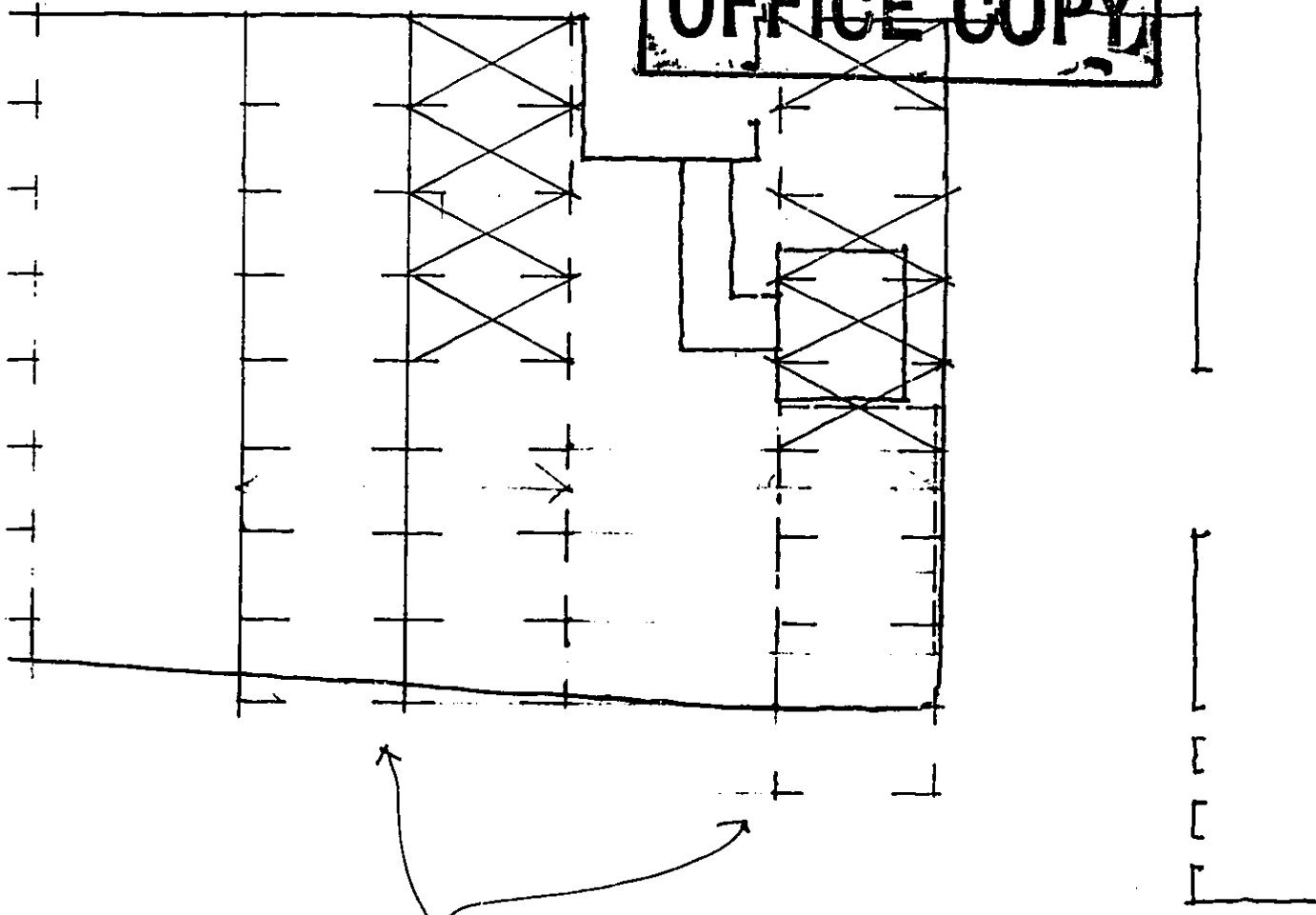
WELWYN HATFIELD D.C.
TOWN PLANNING DEPARTMENT
RECEIVED
Date 15-5-87

WELWYN HATFIELD D.C.
RECEIVED... 27 MAR 1987
6/152/87

PARKING SPACES NOT ACCESSIBLE
DUE TO EXISTING BUILDINGS
CROSSED OUT.

AMENDMENT

OFFICE COPY



ROAD RE ALIGNMENT
ASSUMED.