

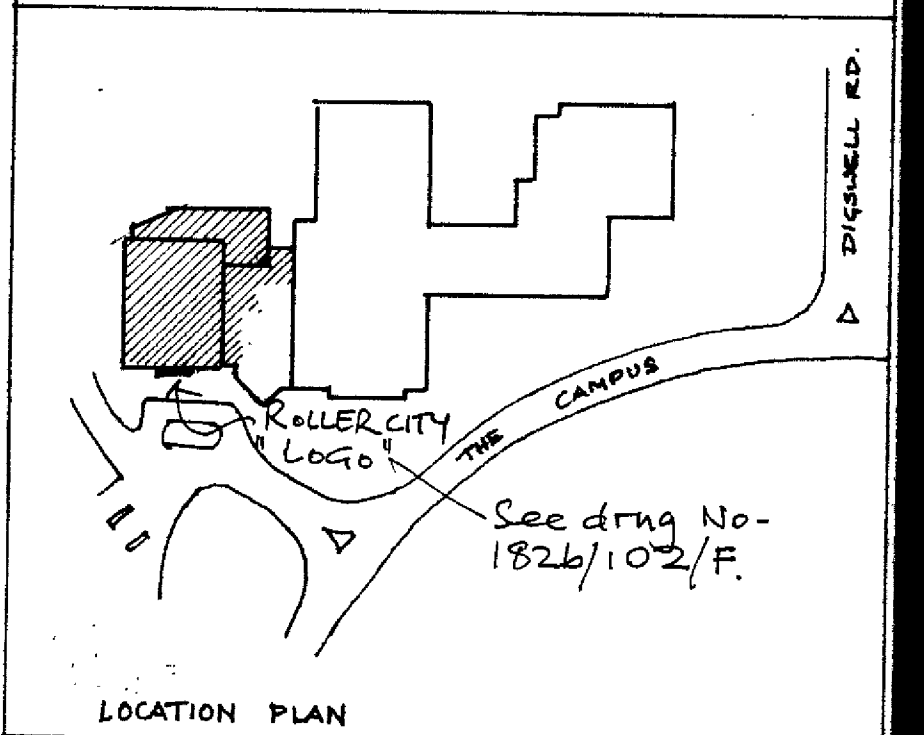
SECTION A.A.

SECTION B.B.

NOTES AND REVISIONS **A.B.P. ©**

No dimensions to be scaled from this drawing. All stated dimensions must be verified on site. The Architect must be advised of any discrepancies. This drawing must be read in accordance with the specification / Bill of Materials and related drawings.

LOCKERS & BOOT STORE MACHINERY NOT TO BE INCLUDED IN CONTRACT B.O.M.



- REV K GENERALLY UPDATED TO ACCORD WITH DETAIL DRAWINGS 12/1/90
- REV J DOORS ADDED, COLUMNS IN VIEW WITH AMENDMENTS 10/1/89
- REV H DRAWING AMENDED IN LINE WITH 150 PLANS & ELEVATIONS 21/10/89
- REV G DMS ADDED EXISTING STRUCTURE AMENDMENTS 27/7/89
- REV F DMS ADDED 26/7/89
- REV E CONTRACT ISSUE 25/7/89
- REV D MAJOR AMENDMENT TO BOOT STORE, CHAIRMAN'S & REAR OF BUILDING 10/4/89
- REV C STORE ROOM REAR ADDED & ACCESS REVISED INTERIOR WALL EDGE REVISED & E.A.L. 2/8/89
- REV B REAR AMENDMENT TO EXISTING BUILDING, INTERIOR BUILDING ADDED - FIRE ESCAPE ADDED, STORE ROOM ADDED - SEE DRWG. 18/8/89
- REV A NOTES ADDED, MATERIALS INDICATED BUILDING RECORDED AS WORKING DRAWING 26/7/89

OFFICE COPY **FISCHER, BOXER, PARTNERS**
Architects Surveyors and Planning Consultants.

WELWYN HATFIELD D.C.
RECEIVED 13 JUN 1989
NO/24/90/110

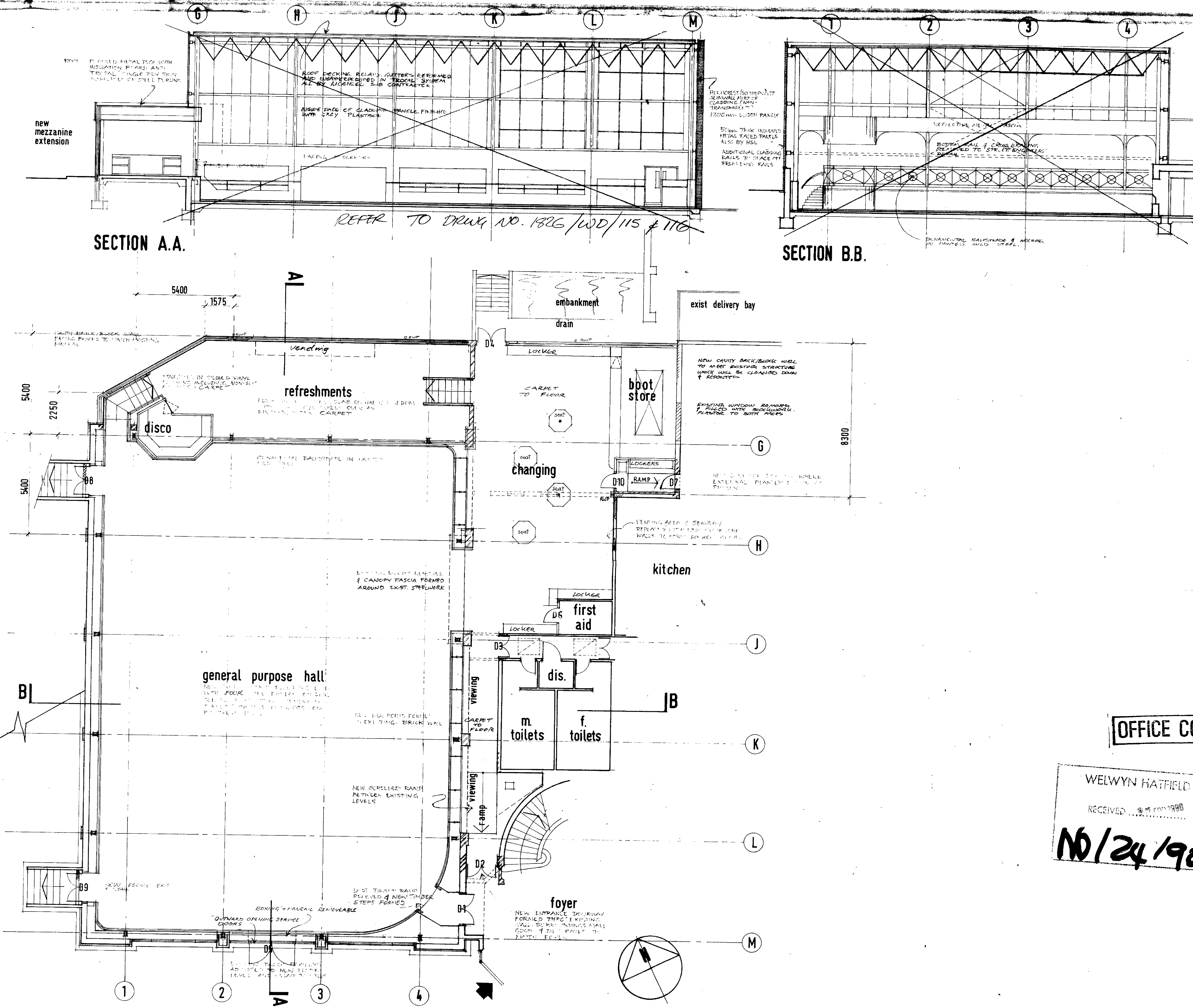
Head Office
A.B.P. House,
Salisbury Square,
Hatfield, Hertfordshire AL9 5AQ
Telephone Hatfield 69001
Associated Offices
South Melbourne Sydney Australia
Palma Majorca Spain
Toronto Canada

CAMPUS WEST
WELWYN GARDEN CITY
HERTS.

Title
Refurbishment of 'Roller City'
PLAN, SECTIONS

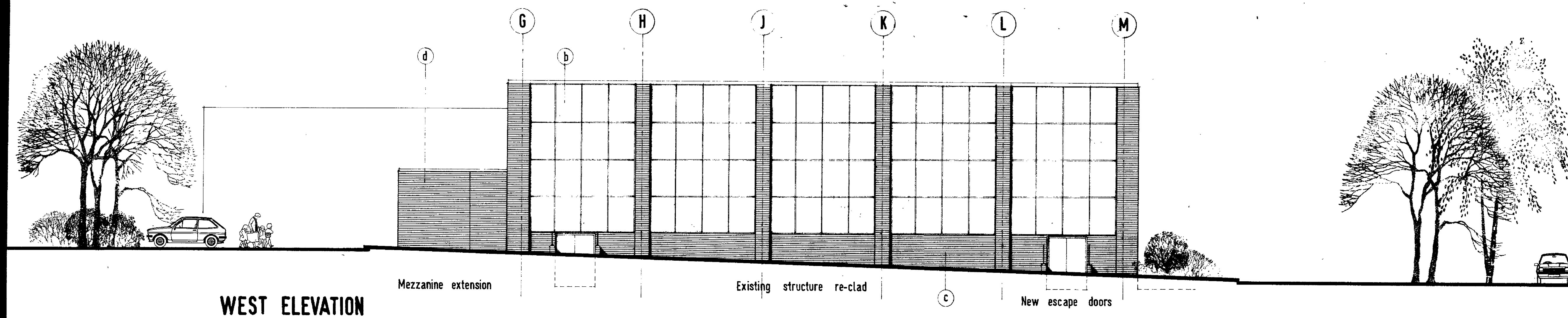
Date JUNE 89	Scale 1:100	Drawn pb
Drawing No 1826.WD.101.	Revision K	

FOR ELEVATIONS REFER TO DRWG. NO. 1826.P.22.

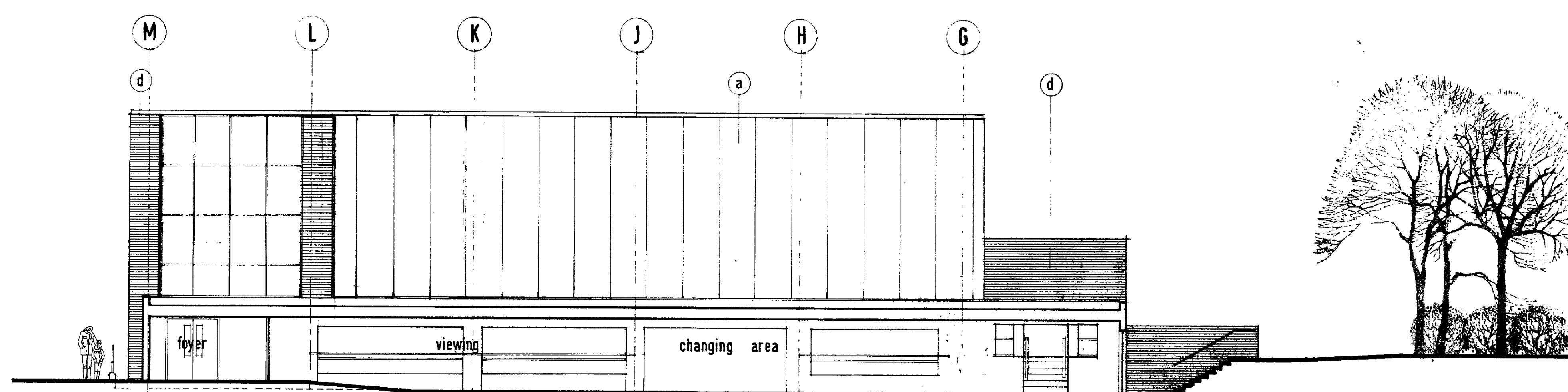


No dimensions to be scaled from this drawing. All stated dimensions must be verified on site. The Architect must be advised of any discrepancies. This drawing must be read in accordance with the specification / Bill of Materials and related drawings.
FOR PLAN & SECTIONS REFER TO DWG NO. 1826.P. 21.

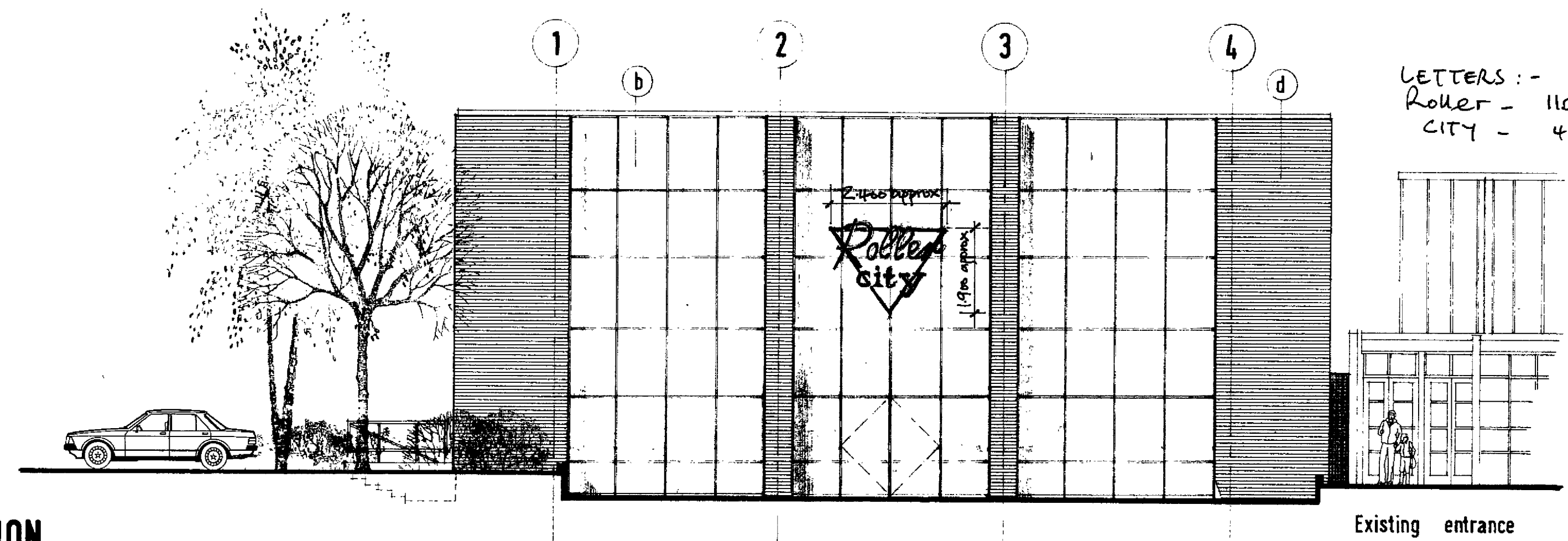
BRICKWORK PIERS & LOW LEVEL EXTENSION: (d) REDLAND BRICKS 'NUTBOURNE SANDFACED' MULTICOLOURED
CURTAIN-WALLING: (b) METAL FRAME 'COBALT BLUE' RAL 5013 POLYESTER POWDER COAT (VERTICAL MEMBERS TO BE EMPHASISED WITH A DEEPER CAPPING) GLAZING IN PULKINGTON 'REFLECTAFLOAT' COL: SILVER MIRROR.
SMOOTH PANELLING: (a) 'MOUNTAIN BLUE' RAL 5014 PPC.



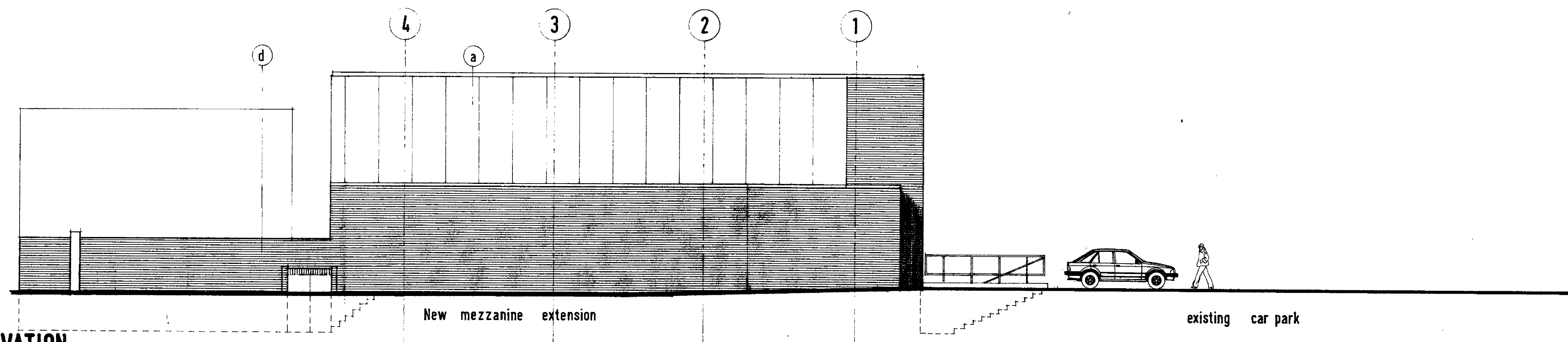
WEST ELEVATION



EAST ELEVATION



SOUTH ELEVATION



NORTH ELEVATION

LETTERS :-
 Roller - 1100 high Capitals, lower case to Scale
 CITY - 450 high lower case
 Triangular frame :-
 250 m.s. hollow section
 Stone enamelled blue
 Letters S. E. red, blue, white

WELWYN HATFIELD D.C.
 RECEIVED ... 12 APR 1989
16/24/90/10
 OFFICE COPY

ARCHER, BOXER, PARTNERS
 Architects Surveyors and Planning Consultants.

Head Office
 A.B.P. House,
 Salisbury Square,
 Hatfield, Hertfordshire AL9 5AQ
 Telephone: Hatfield 69001
 Associated Offices
 South: Melbourne Sydney Australia
 Palma, Majorca, Spain
 Toronto, Canada

Project
CAMPUS WEST
WELWYN GARDEN CITY
HERTS.

Title
Refurbishment of 'Roller City' Elevations

Date AUG 89	Scale 1:100	Drawn E.P.
Drawing No 1826-WD-102	Revision F	