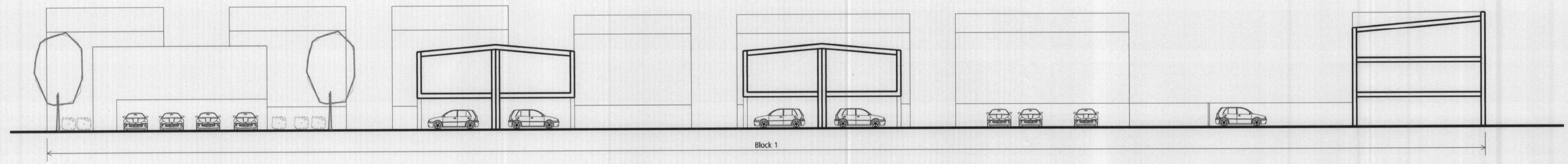
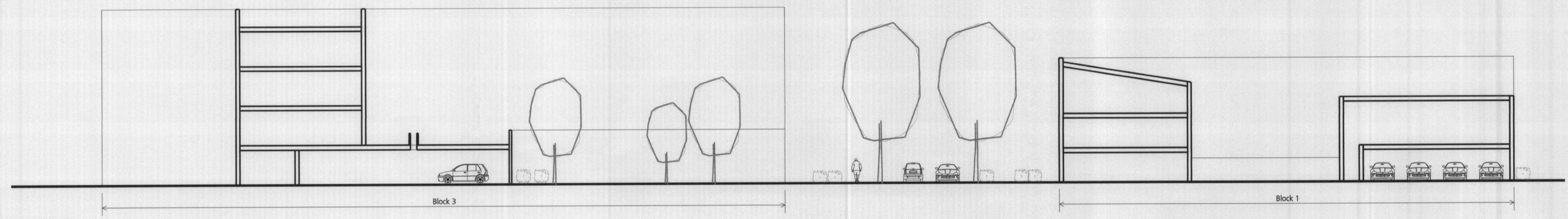


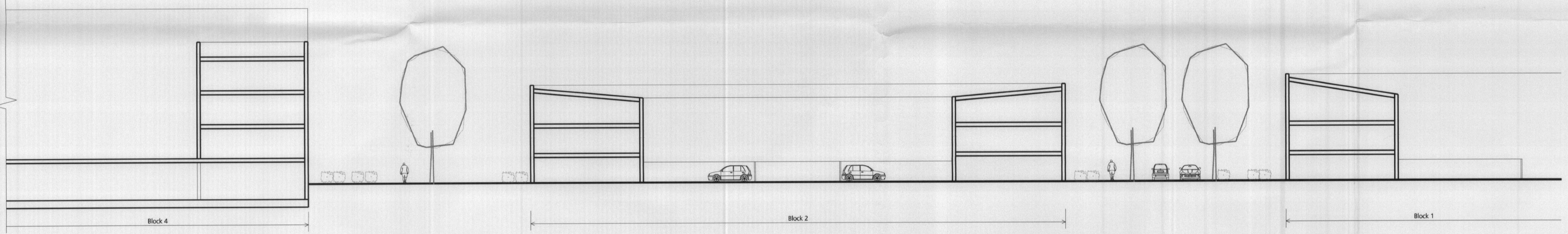
Key Plan



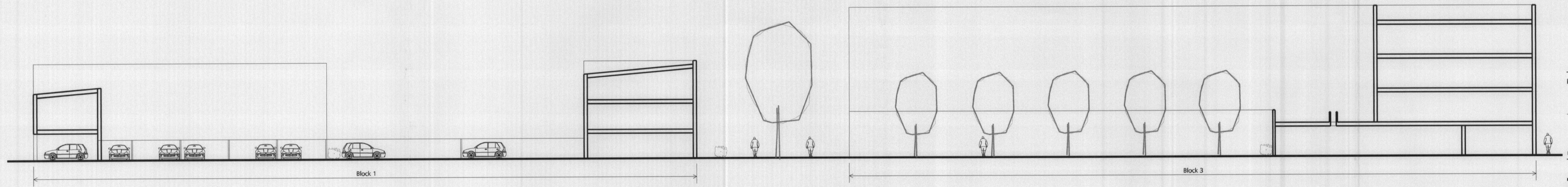
Section A



Section B



Section C



Section D

WELWYN HATFIELD
PLANNING
OFFICE COPY
02 JUN 2009
N6/2009/1053/PPA
No: N6/2009/1053/L10

key plan

06.05.09 MGM Planning Issue
revision date drawn description

FOR PLANNING

George Wimpey North Thames
Roche Site, Broadwater Road
client / job name

Site Sections
drawing title

WGC AL (0) 160

drawing number revision
job reference scale drawn

WIM-WGC-001 1:200 @ A1 MGM

0m 4m 8m 12m 16m 20m

HTA HTA 106-110 Kentish Town Road London UK NW1 9PX
P (020) 7485 8555 F (020) 7485 1232 hta@hta-arch.co.uk

Notes -
Drawing to be read in conjunction with other relevant consultant information. This drawing is the copyright of HTA Architects Ltd. and must not be copied or reproduced in part, or in whole, without the express permission of HTA Architects Ltd. Drawing to be read in conjunction with outline specification.