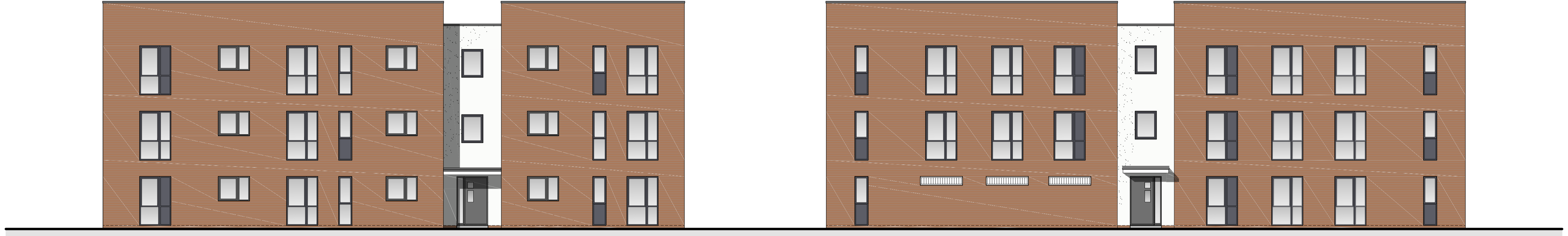
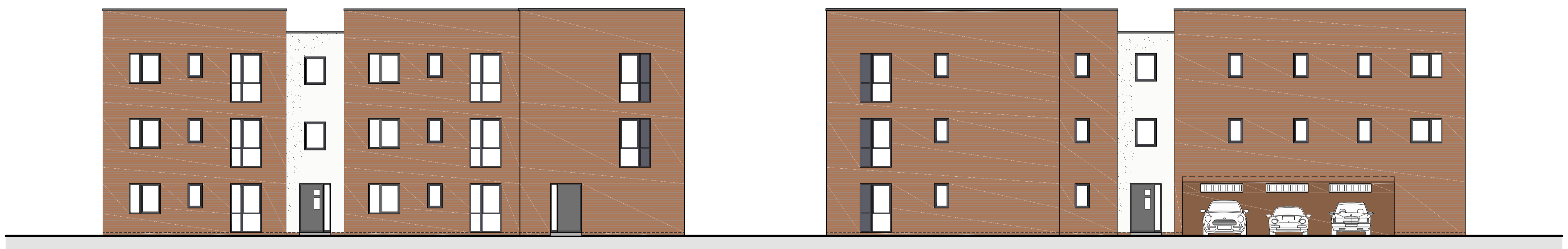


- Contractors must check all dimensions on site. Only figured dimensions are to be worked from. Discrepancies must be reported to the Architect or Engineer before proceeding. © This drawing is copyright
- Reproduced from OS Sitemap © by permission of Ordnance Survey® on behalf of The Controller of Her Majesty's Stationery Office. © Crown copyright 2008. All rights reserved. Licence number 100007126.



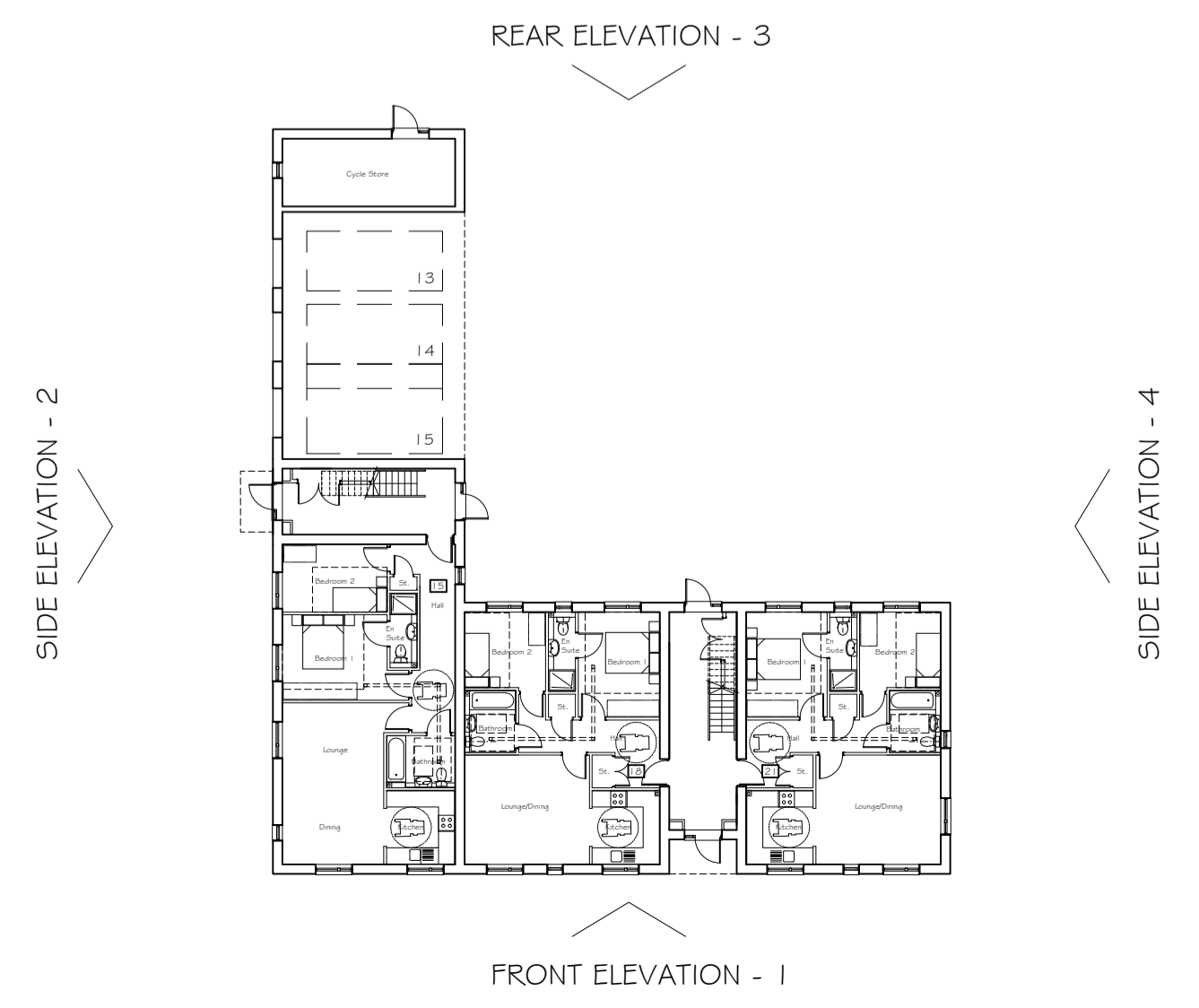
FRONT ELEVATION - 1

SIDE ELEVATION - 2




REAR ELEVATION - 3

SIDE ELEVATION - 4



| Revision | Description  | Drawn | Checked | Date     |
|----------|--|-------|---------|----------|
| C        | Bike store door moved from side elevation to rear elevation  | CM    | GS      | 19/06/17 |
| B        | Parapet walls raised by approximately 440mm to incorporate truss design and hatching updated to match approved materials | CM    | GS      | 27/03/17 |
| A        | Render added in accordance with Planning Officer's comments  | CM    | GS      | 29/06/15 |

Preliminary  
  Information  
  Tender  
  Construction  
  As Built


**Woods Hardwick**  
 Architects, Engineers and Development Consultants

Title **Broadwater Road**  
**Welwyn Garden City**

Details **Flats - Plots 13-23**  
**Elevations**

Scale **1:100@A1**   Date **Nov 2014**   Drawn **CHLM**   Chk **GS**

15-17 Goldington Road  
 Bedford  
 MK40 3NH  
 United Kingdom  
 T. +44 (0)1234 268862  
 F. +44 (0)1234 263054  
 mail@woodshardwick.com  
 www.woodshardwick.com

Please consider the environment before printing this drawing

**17095/106C**

